



Supplement of

**Measurement Report: Wintertime new particle formation
in the rural area of the North China Plain – influencing
factors and possible formation mechanism**

Juan Hong et al.

Correspondence to: Juan Hong (juanhong0108@jnu.edu.cn) and Qiaoqiao Wang (qwang@jnu.edu.cn)

The copyright of individual parts of the supplement might differ from the article licence.

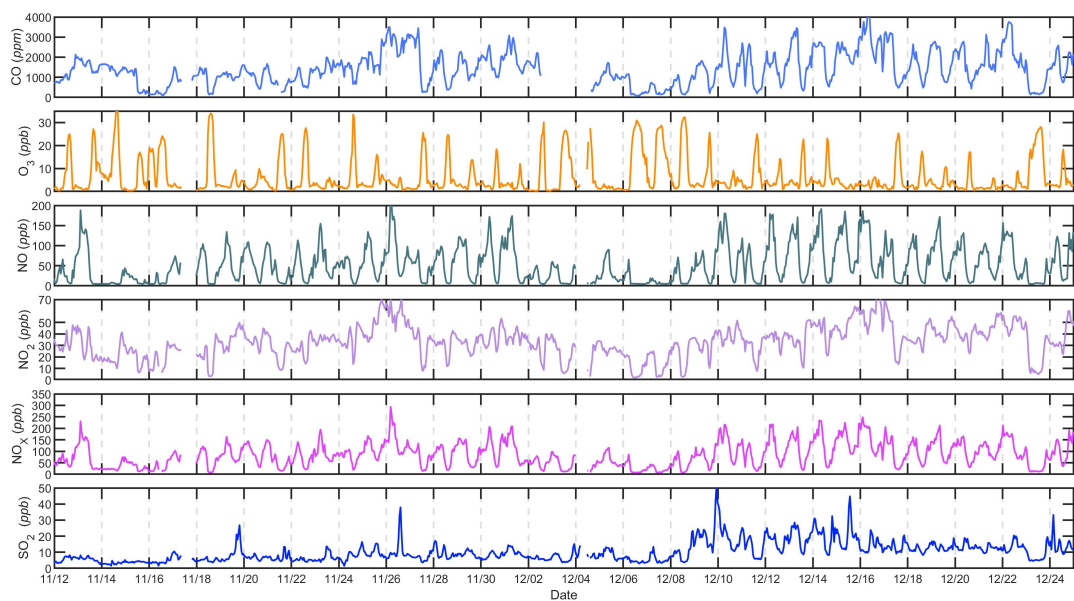


Figure S1. Time series of the measured concentration of different trace gases e.g., CO, O₃, NO, NO₂, NO_x, SO₂ during current campaign.

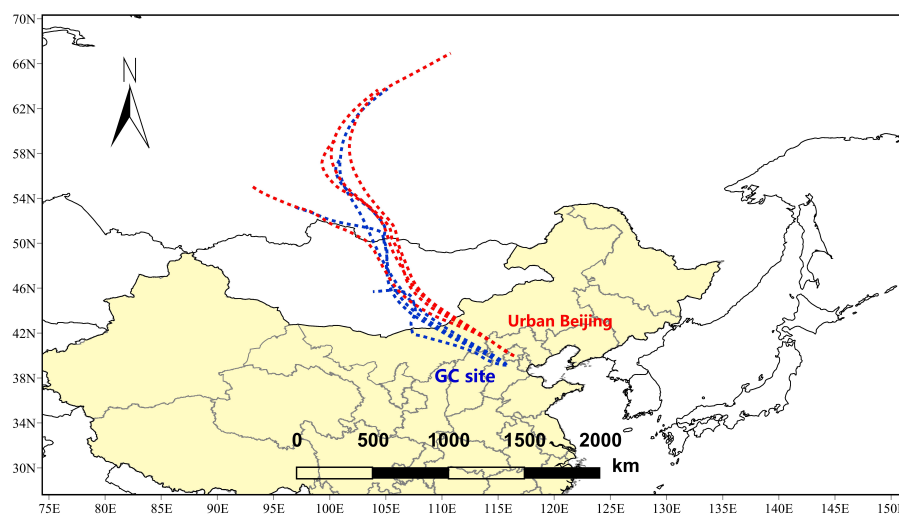


Figure S2. 72-hour back trajectories of air masses arriving at our GC site as well as urban Beijing on December 7, 2018.

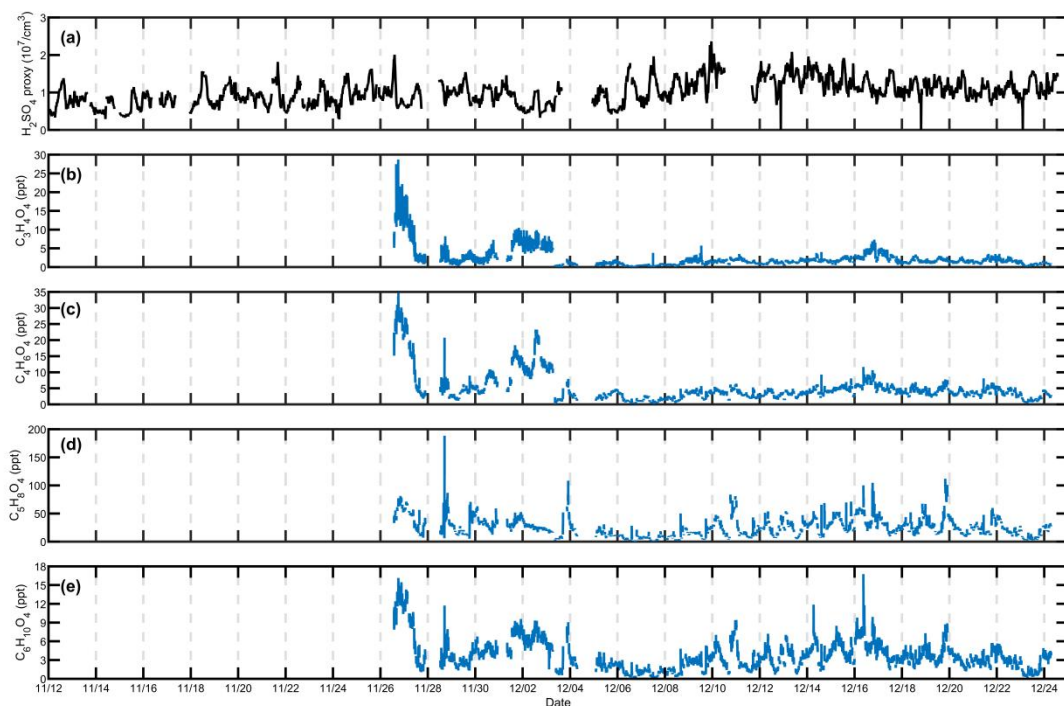


Figure S3. Measured concentration of these four dicarboxylic acids as well as the concentration of SA proxy during our study.

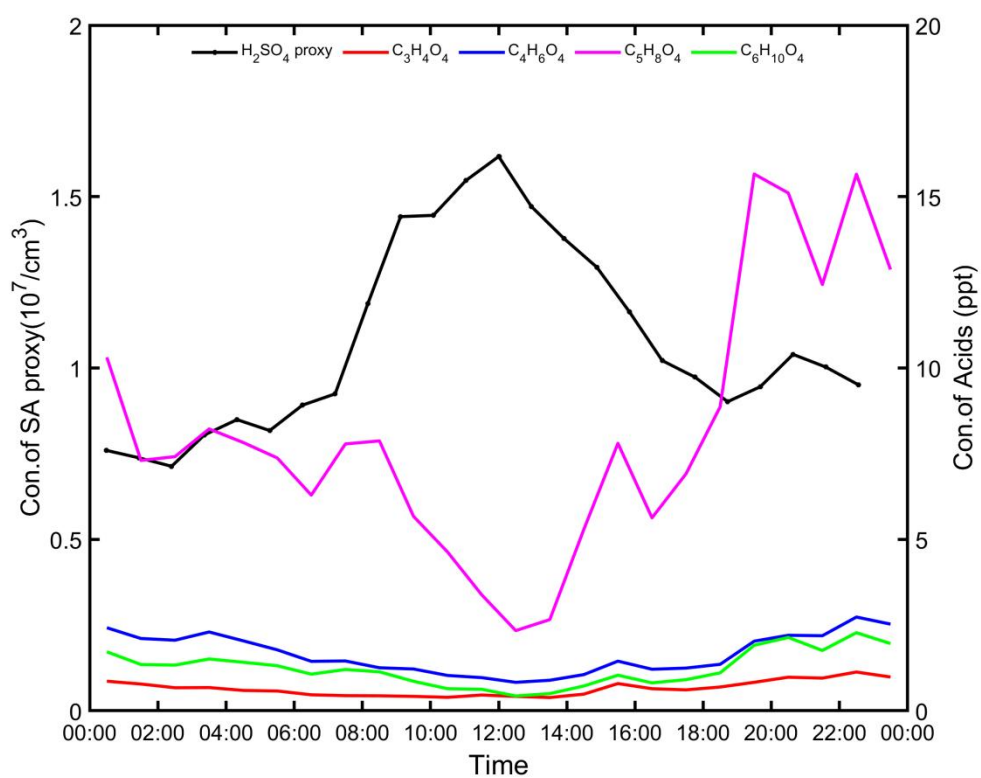


Figure S4. Diurnal trend of the concentration of SA as well as these dicarboxylic acids in the atmosphere for NPF days.