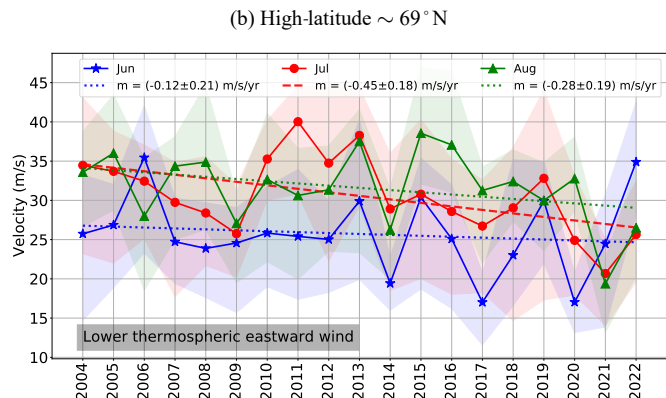


(a) Middle-latitude $\sim 53^\circ\text{N}$ (c) Middle-latitude $\sim 54^\circ\text{N}$

(d) High-latitude $\sim 69^\circ\text{N}$

Legend for (c) and (d):
 Jun: $m = (-0.39 \pm 0.10)$ m/s/yr
 Jul: $m = (-0.64 \pm 0.10)$ m/s/yr
 Aug: $m = (-0.41 \pm 0.09)$ m/s/yr

Legend for (c) and (d):
 Jun: $m = (0.02 \pm 0.16)$ m/s/yr
 Jul: $m = (-0.08 \pm 0.21)$ m/s/yr
 Aug: $m = (0.06 \pm 0.15)$ m/s/yr

(e) Middle-latitude $\sim 53^\circ\text{N}$

(f) High-latitude $\sim 69^\circ\text{N}$

Legend for (e) and (f):
 Jun: $m = (0.33 \pm 0.12)$ m/s/yr
 Jul: $m = (0.26 \pm 0.12)$ m/s/yr
 Aug: $m = (0.23 \pm 0.10)$ m/s/yr

Legend for (e) and (f):
 Jun: $m = (0.05 \pm 0.09)$ m/s/yr
 Jul: $m = (-0.06 \pm 0.08)$ m/s/yr
 Aug: $m = (-0.02 \pm 0.06)$ m/s/yr