



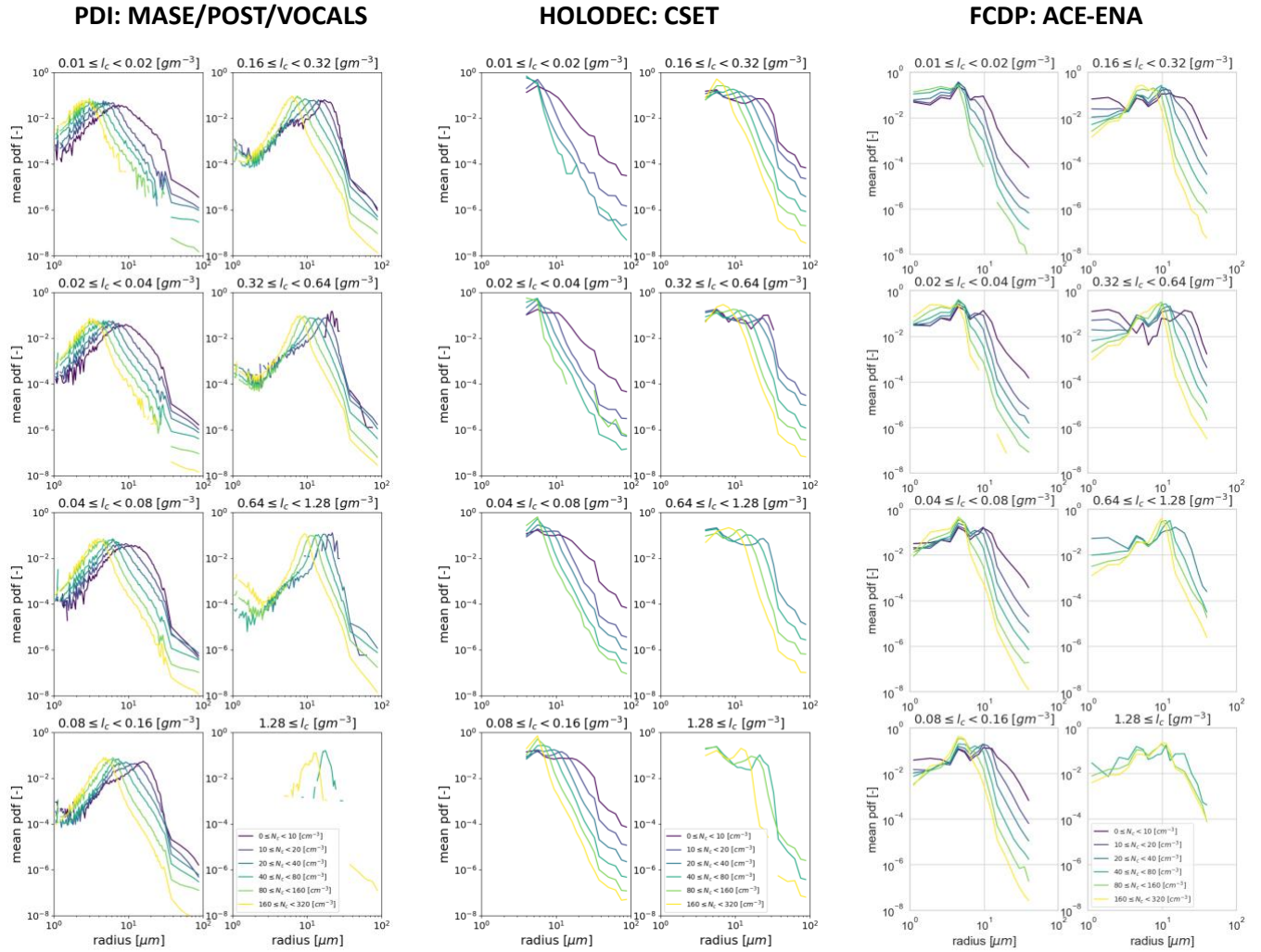
*Supplement of*

## **Quantifying the dependence of drop spectrum width on cloud drop number concentration for cloud remote sensing**

**Matthew D. Lebsock and Mikael Witte**

*Correspondence to:* Matthew D. Lebsock ([matthew.d.lebsock@jpl.nasa.gov](mailto:matthew.d.lebsock@jpl.nasa.gov))

The copyright of individual parts of the supplement might differ from the article licence.



**Figure S1: The mean probability density function (pdf) of the drop concentration sorted by the cloud mode (radius < 27.5  $\mu\text{m}$ ) drop number concentration and liquid water content.**