



Supplement of

Signatures of the Madden–Julian oscillation in middle-atmosphere zonal mean temperature: triggering the interhemispheric coupling pattern

Christoph G. Hoffmann et al.

Correspondence to: Christoph G. Hoffmann (christoph.hoffmann@uni-greifswald.de)

The copyright of individual parts of the supplement might differ from the article licence.

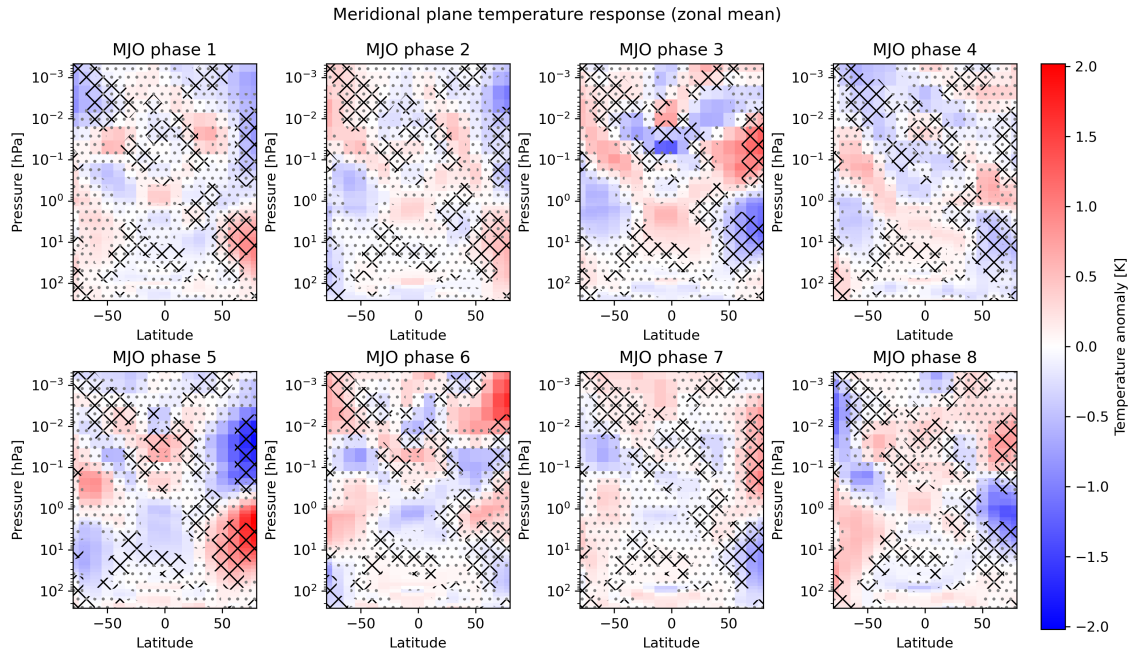


Figure S1: Similar to Fig. 2 in the main paper, but with only an MJO strength filter applied (i.e. no filtering for season or state of the QBO applied). Note that the color scale is different compared to Fig. 2 in the main paper.

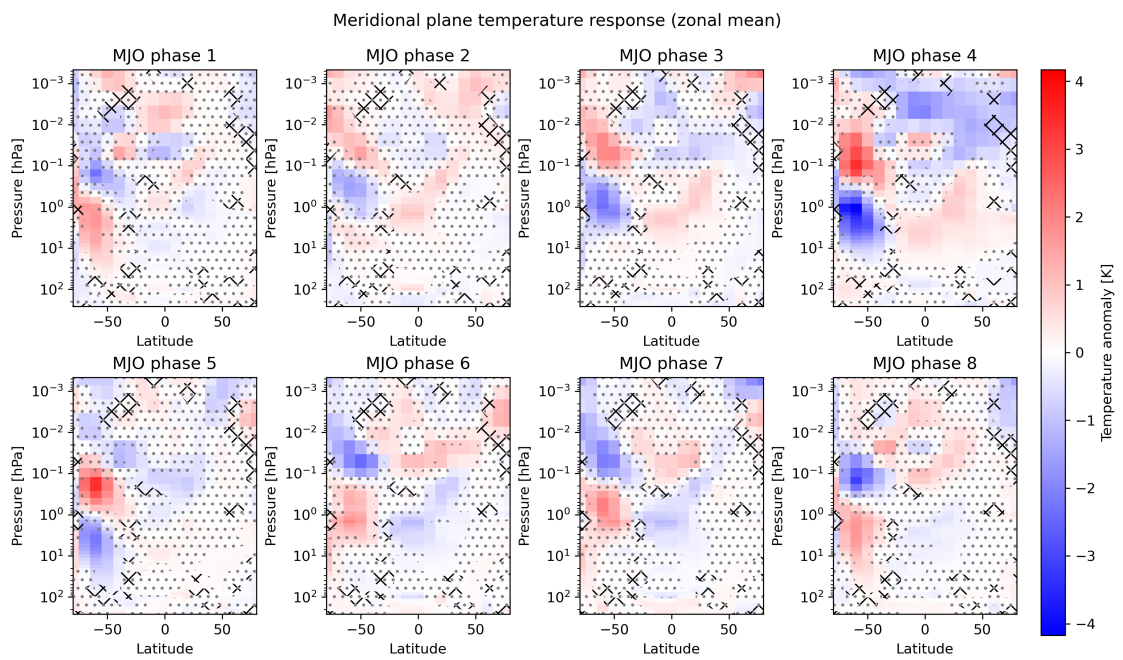


Figure S2: Similar to Fig. 6 in the main paper (i.e. the austral winter / boreal summer situation), but with the considered period restricted to the end of the year 2018. Therefore, no major SSW influences the temperature response in the southern polar region. Note that the color scale is different compared to Fig. 6 in the main paper.