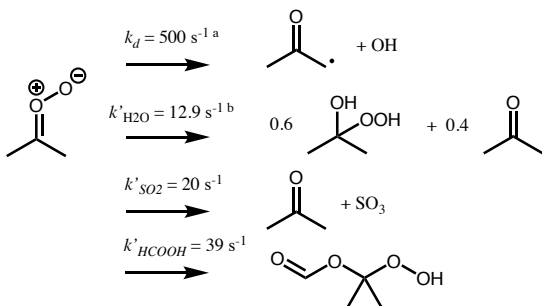
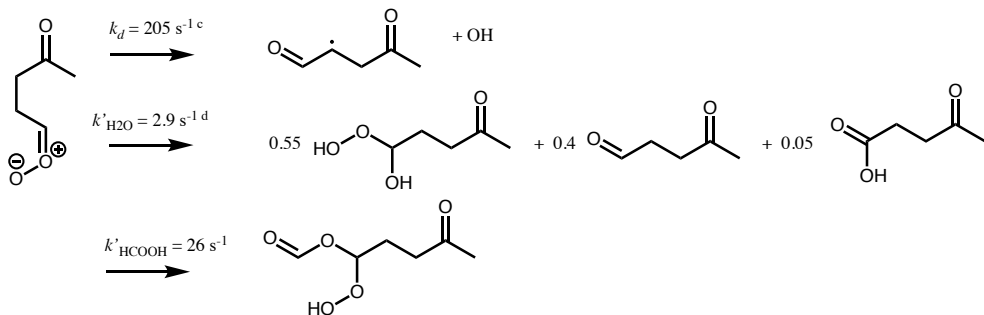


**Bimolecular rate coefficients** $(10^{11} \text{ cm}^3 \text{ s}^{-1})$  $k_{\text{SO}_2} = 16$  $k_{\text{RCOOH}} = 31$  $k_{\text{NO}_2} = 0.2$  $k_{\text{HCl}} = 4.6$  $k_{\text{HNO}_3} = 54$ **Bimolecular rate coefficients** $(10^{11} \text{ cm}^3 \text{ s}^{-1})$  $k_{\text{SO}_2} = 2.6$  $k_{\text{RCOOH}} = 21$  $k_{\text{NO}_2} = 0.2$  $k_{\text{HCl}} = 4.6$  $k_{\text{HNO}_3} = 54$ **Bimolecular rate coefficients** $(10^{11} \text{ cm}^3 \text{ s}^{-1})$  $k_{\text{SO}_2} = 14$  $k_{\text{RCOOH}} = 38$  $k_{\text{NO}_2} = 0.2$  $k_{\text{HCl}} = 4.6$  $k_{\text{HNO}_3} = 54$ 