



Supplement of

Upper stratospheric ClO and HOCl trends (2005–2020): Aura Microwave Limb Sounder and model results

Lucien Froidevaux et al.

Correspondence to: Lucien Froidevaux (lucienf@jpl.nasa.gov)

The copyright of individual parts of the supplement might differ from the article licence.

Supplement to ACP article by L. Froidevaux et al.: Upper stratospheric ClO and HOCl trends (2005–2020): Aura Microwave Limb Sounder and model results.

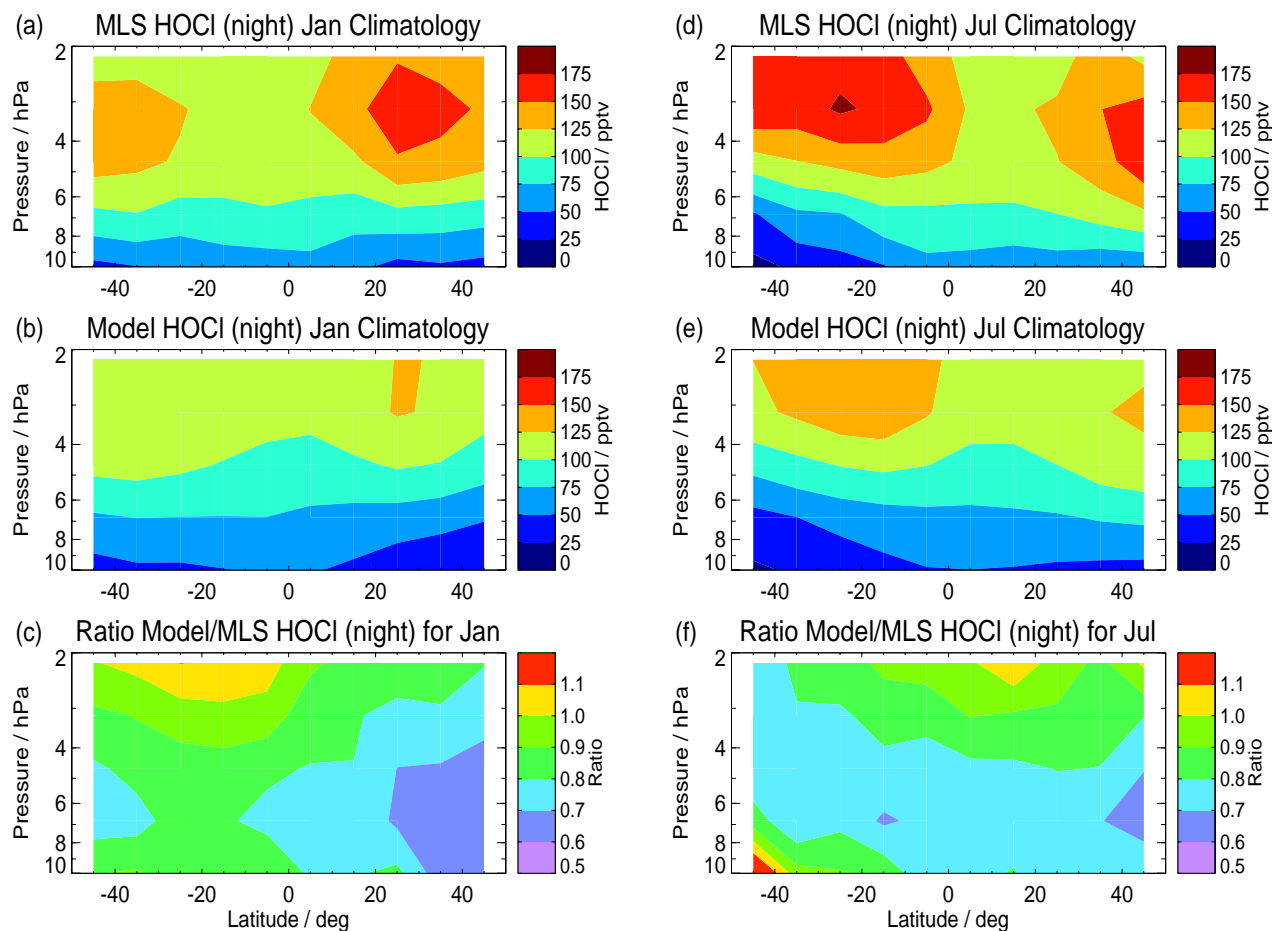


Figure S1. Same as Figure 6, except for nighttime climatological (2005–2020) HOCl values from MLS and model for January and July, as well as the ratios of climatologies (model/MLS).

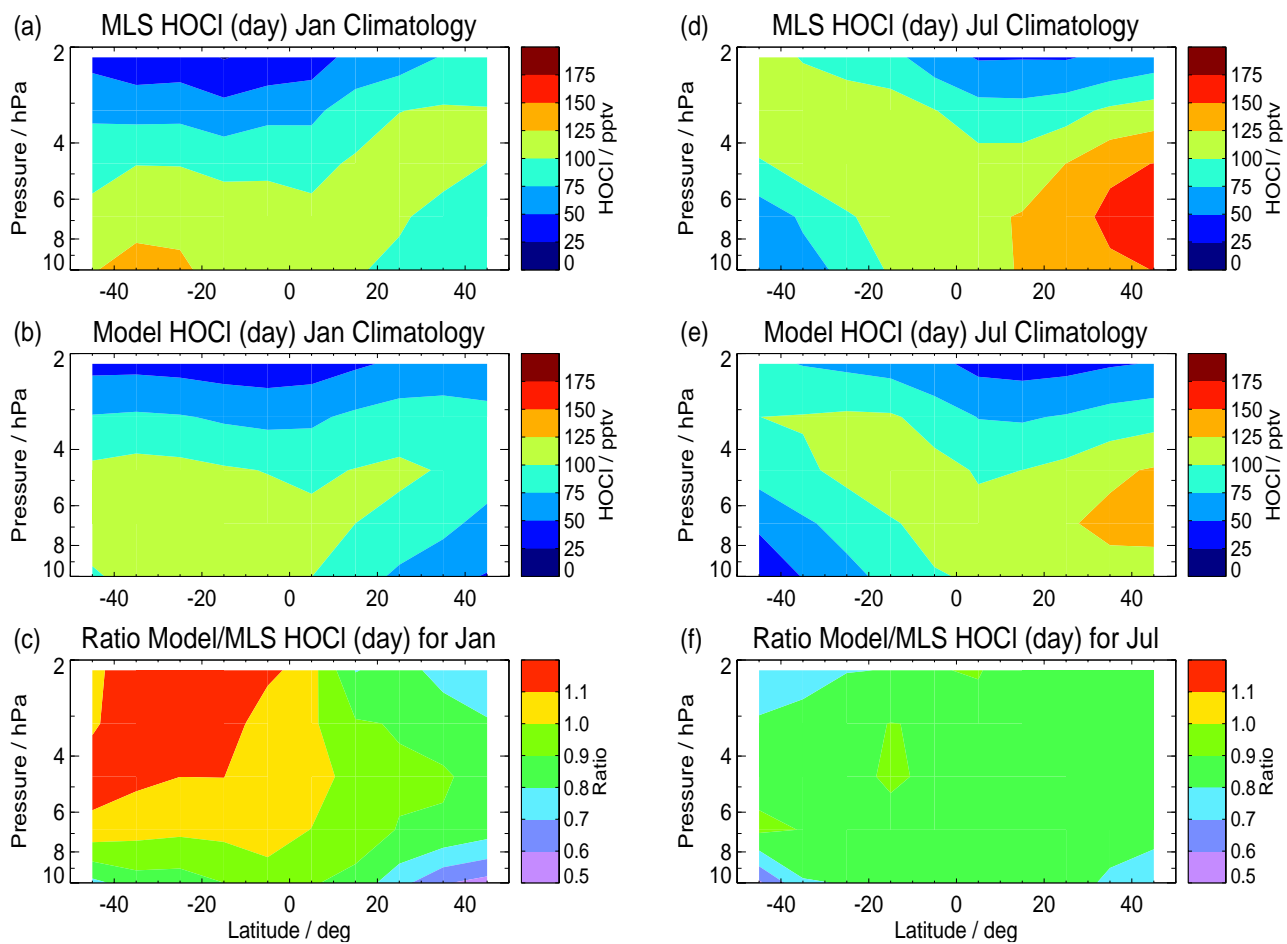


Figure S2. Same as Figure 6, except for climatological (2005–2020) HOCl daytime values from the MLS standard HOCl product (and for the same model as in Fig. 6).

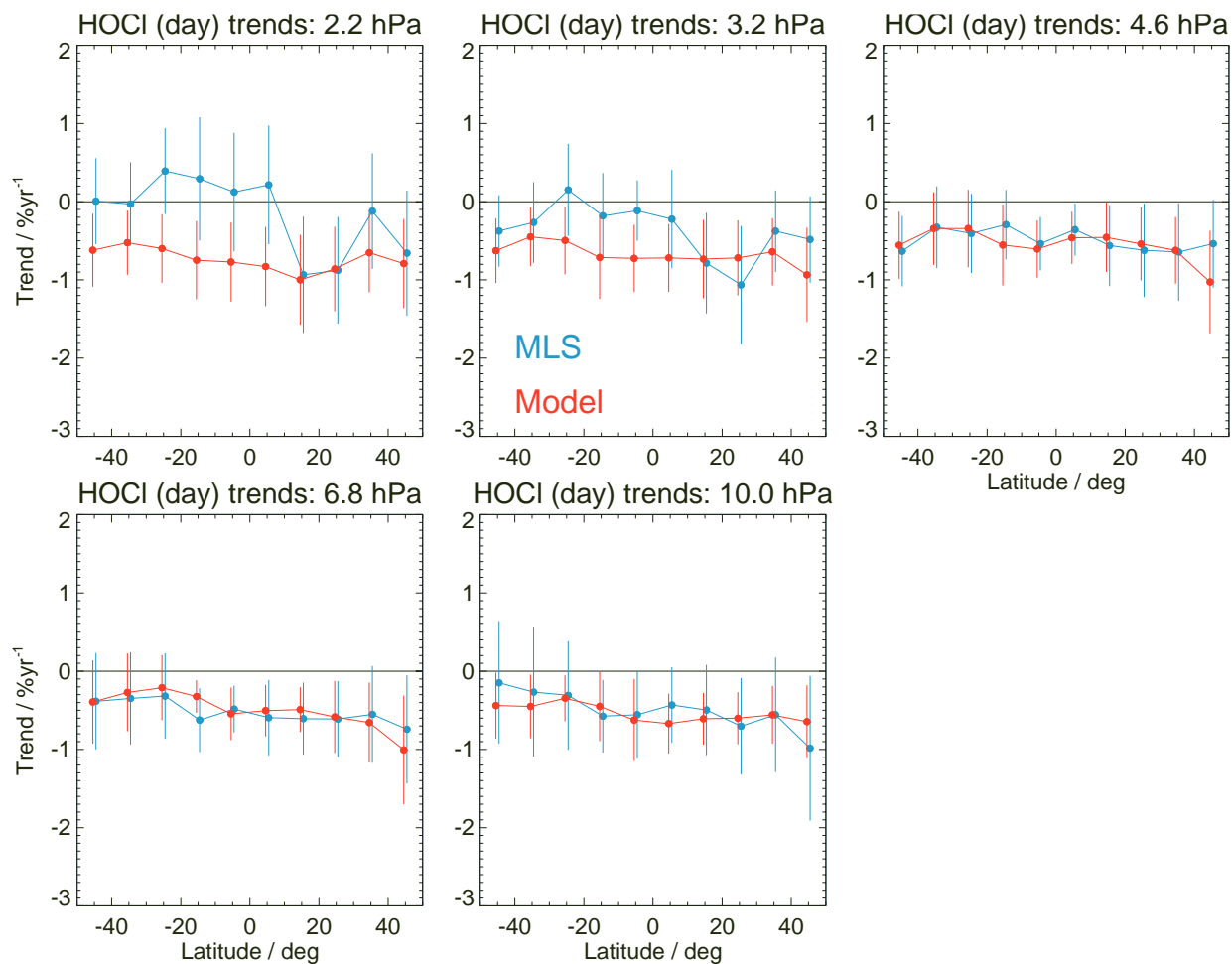


Figure S3. Same as Figure 3 for ClO, but for HOCl (day) trends at different pressure levels versus latitude, as obtained from multiple regression analyses applied to monthly zonal mean series from MLS (blue) and the model (red).

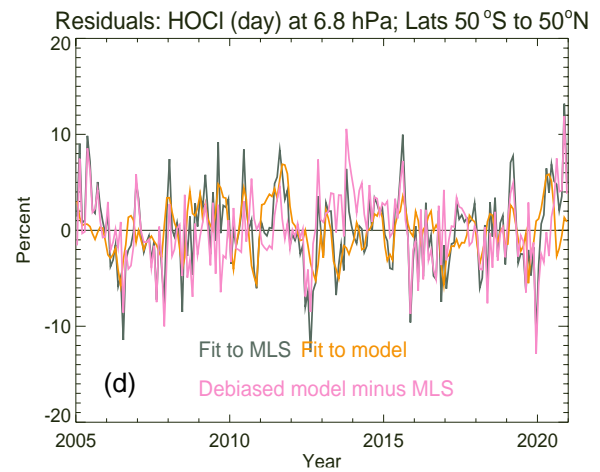
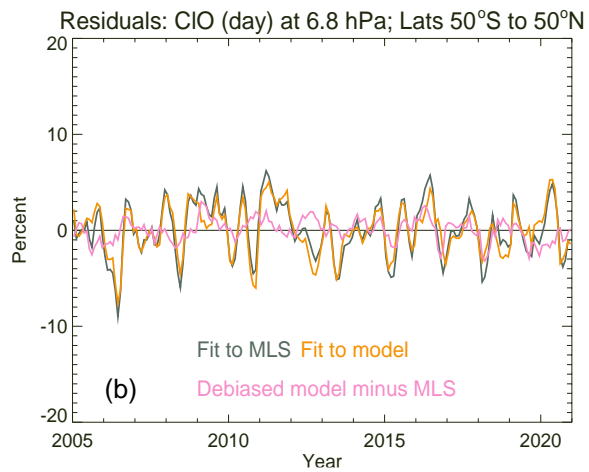
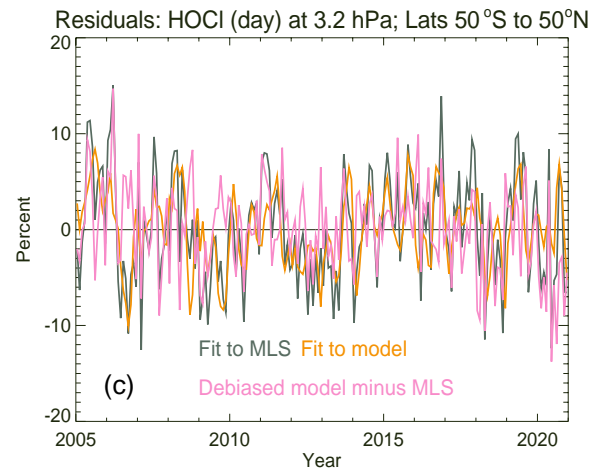
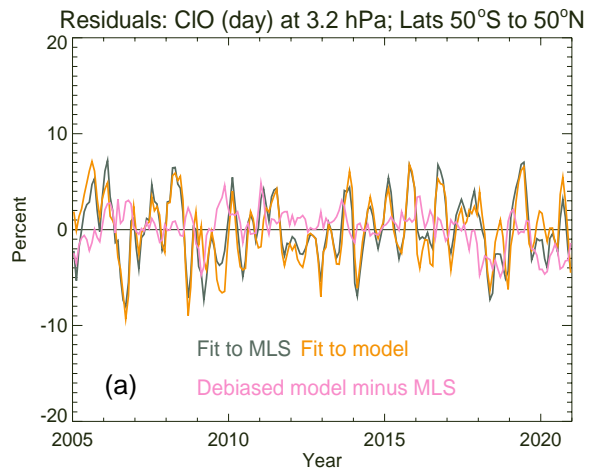


Figure S4. Same as Figs. 2 (for ClO) and 8 (for HOCl), but for residuals and differences of the anomaly time series (percent) shown in Fig. 11 for the 50°S to 50°N latitude range, with (a) ClO at 3.2 hPa, (b) ClO at 6.8 hPa, (c) HOCl at 3.2 hPa, and (d) HOCl at 6.8 hPa. The curves have the same meaning as in the case of the residuals and differences from Fig. 2 and Fig. 8.