



Supplement of

Environmental effects on aerosol–cloud interaction in non-precipitating marine boundary layer (MBL) clouds over the eastern North Atlantic

Xiaojian Zheng et al.

Correspondence to: Baikex Xi (baikex@arizona.edu)

The copyright of individual parts of the supplement might differ from the article licence.

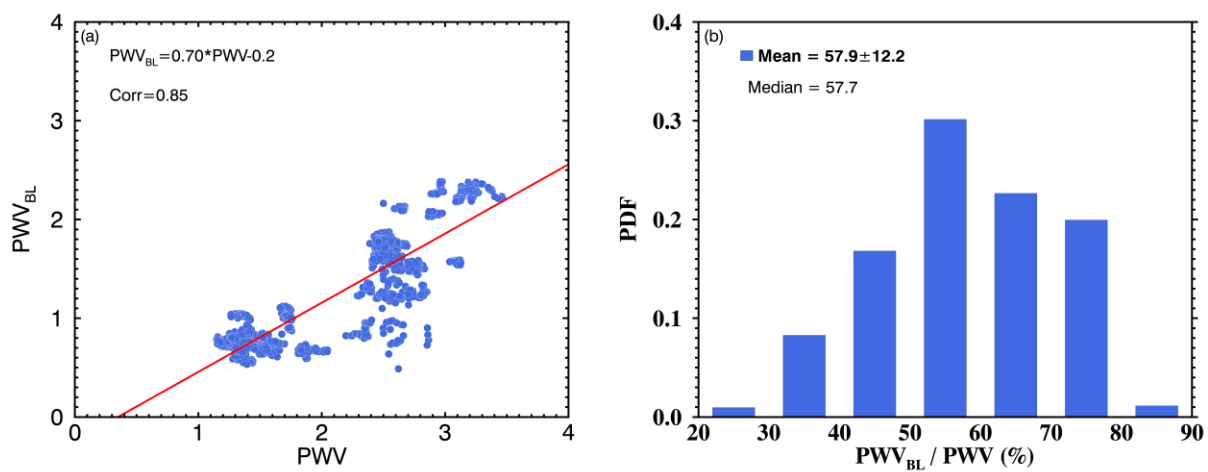


Figure S1. (a) Scatterplot of PWV versus PWV_{BL}; and (b) distribution of the percentage ratio of PWV_{BL}/PWV.

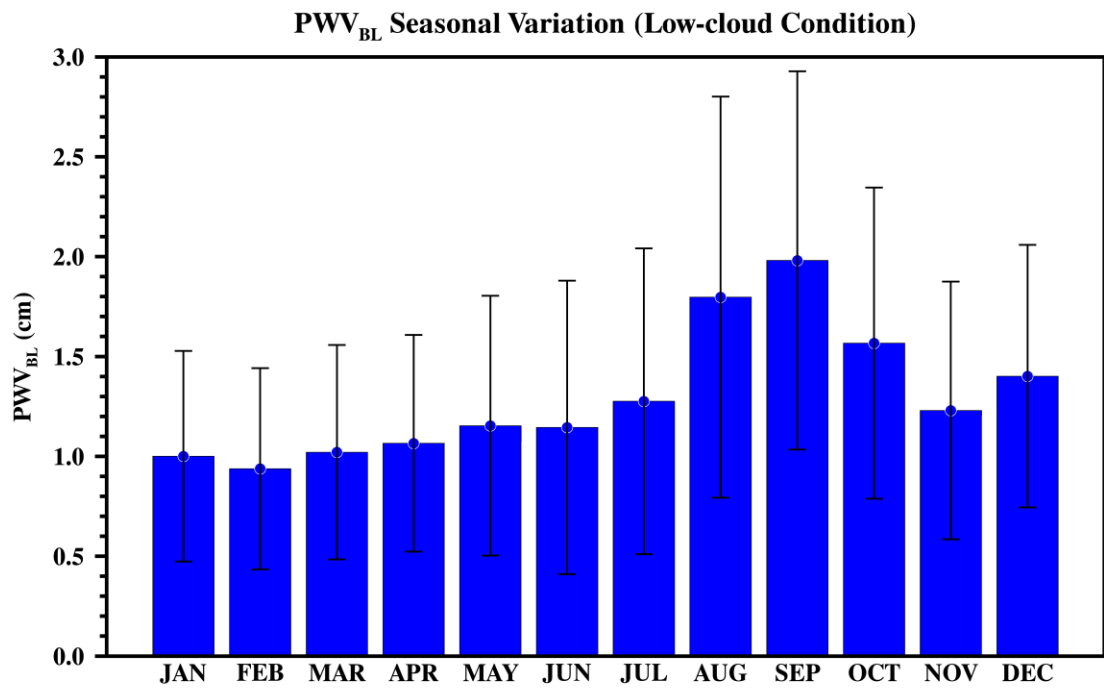


Figure S2. Seasonal variation of PWV_{BL} under single-layer low cloud conditions, from 2016 to 2018. Whiskers denote one standard deviation for each bin.

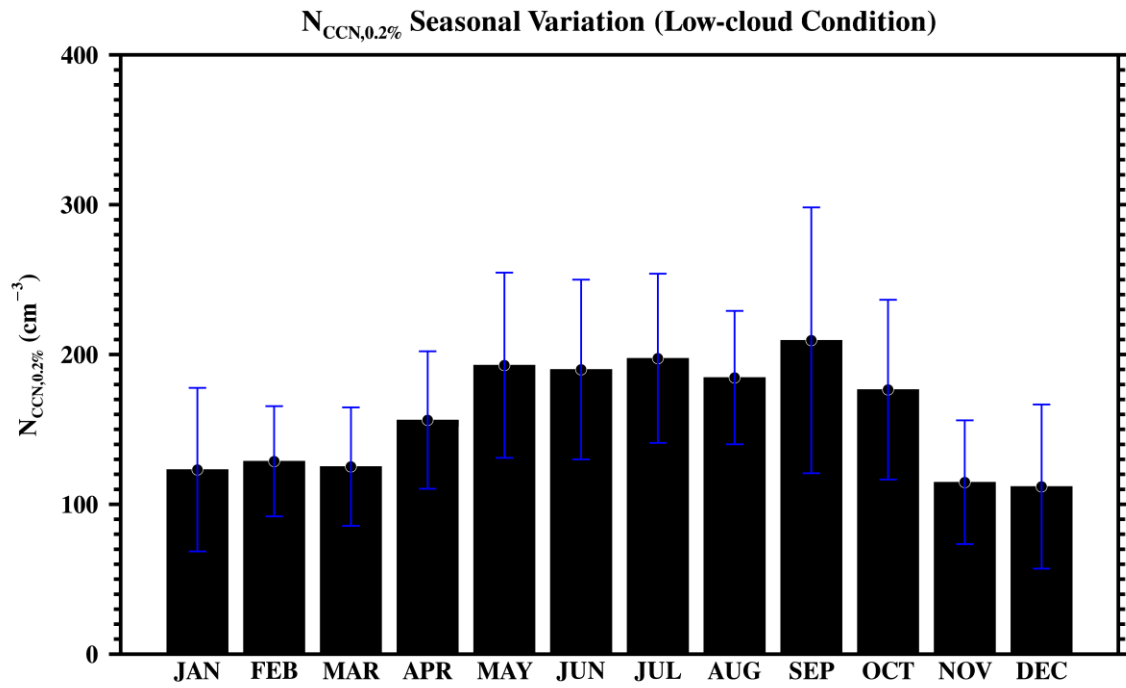


Figure S3. Seasonal variation of N_{CCN} at 0.2% supersaturation level under single-layer low cloud conditions, from 2016 to 2018. Whiskers denote one standard deviation for each bin.

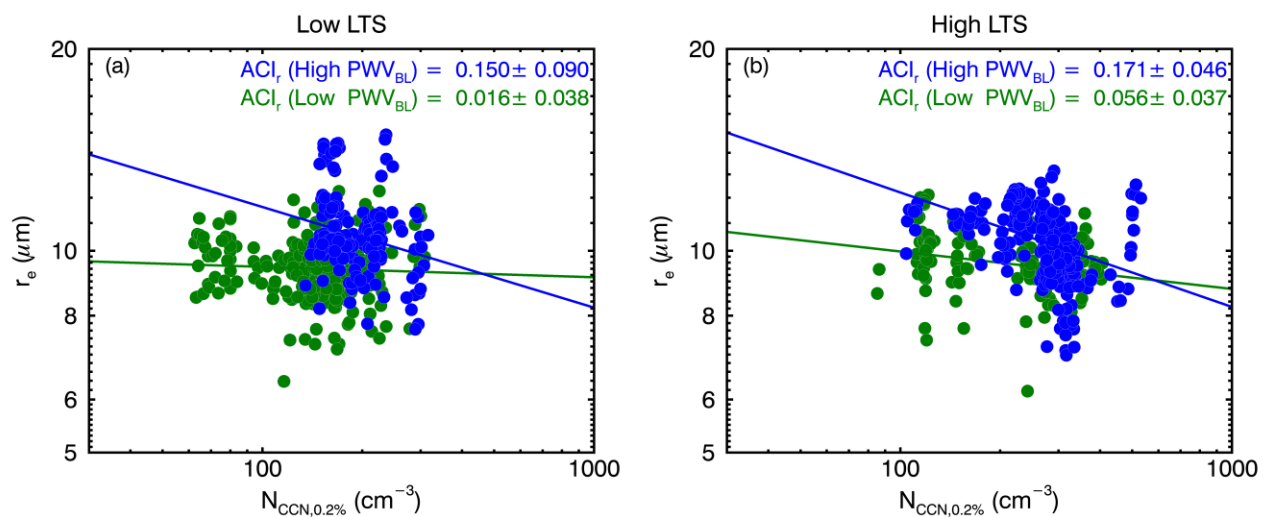


Figure S4. ACI_r derived from r_e to $N_{CCN,0.2\%}$ for (a) low LTS and (b) high LTS regimes. Samples in the low PWV_{BL} regime are plotted in green, and samples in the high PWV_{BL} regime are plotted in blue.