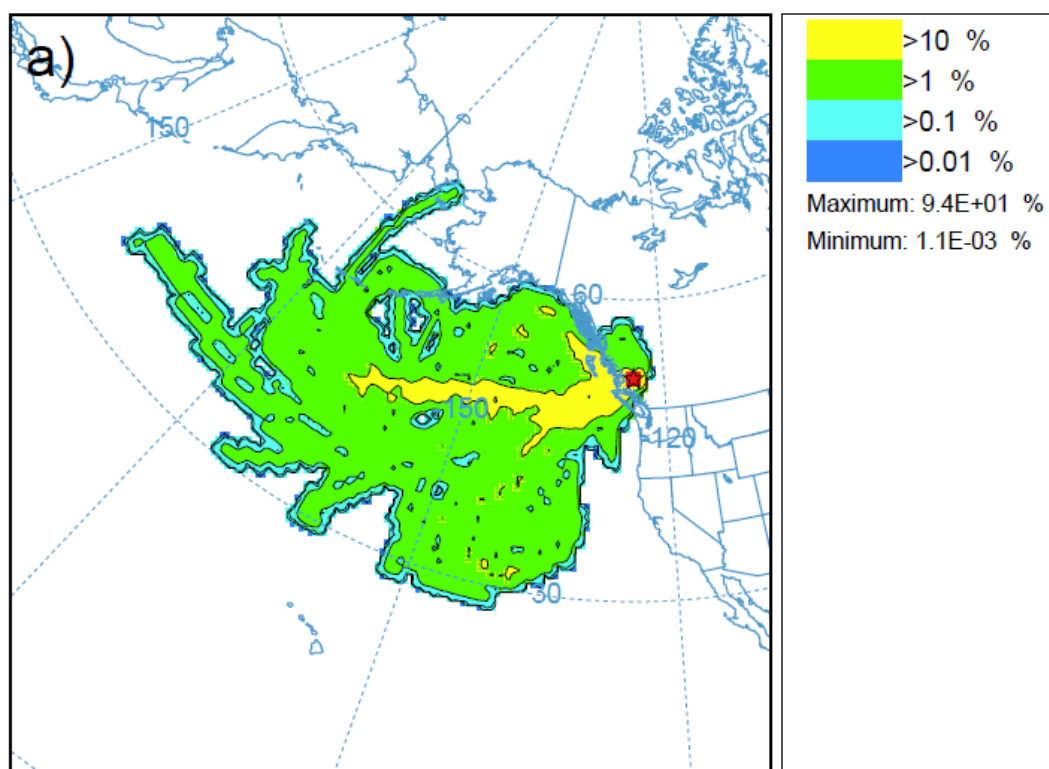


Figure S1: Comparison of meteorological data during June 2019 with the long term averages from the years 2000 - 2021 for a) temperature and b) surface downward shortwave radiation. The markers represent the June 2019 data, the black lines the means 2000 - 2021, the dark gray shading shows ± 1 standard deviation around the mean and the light gray shading the range of daily values.

☆ Eagle Lake Site, 100 m, 10-day backtrajectories



☆ Nazko River Site, 100 m, 10-day backtrajectories

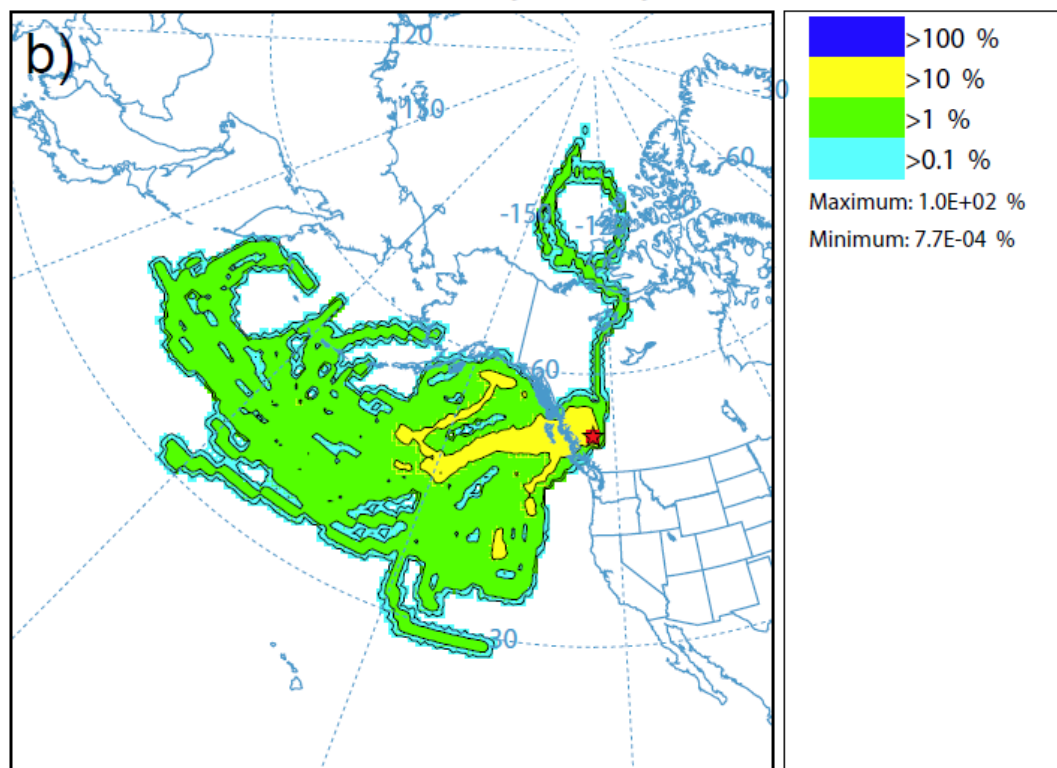


Fig. S2: Trajectory frequency statistics for 10-day backtrajectories initialized at 1900 UTC at 100 m above ground level on each of the sampling days at a) Eagle Lake and b) Nazko River.

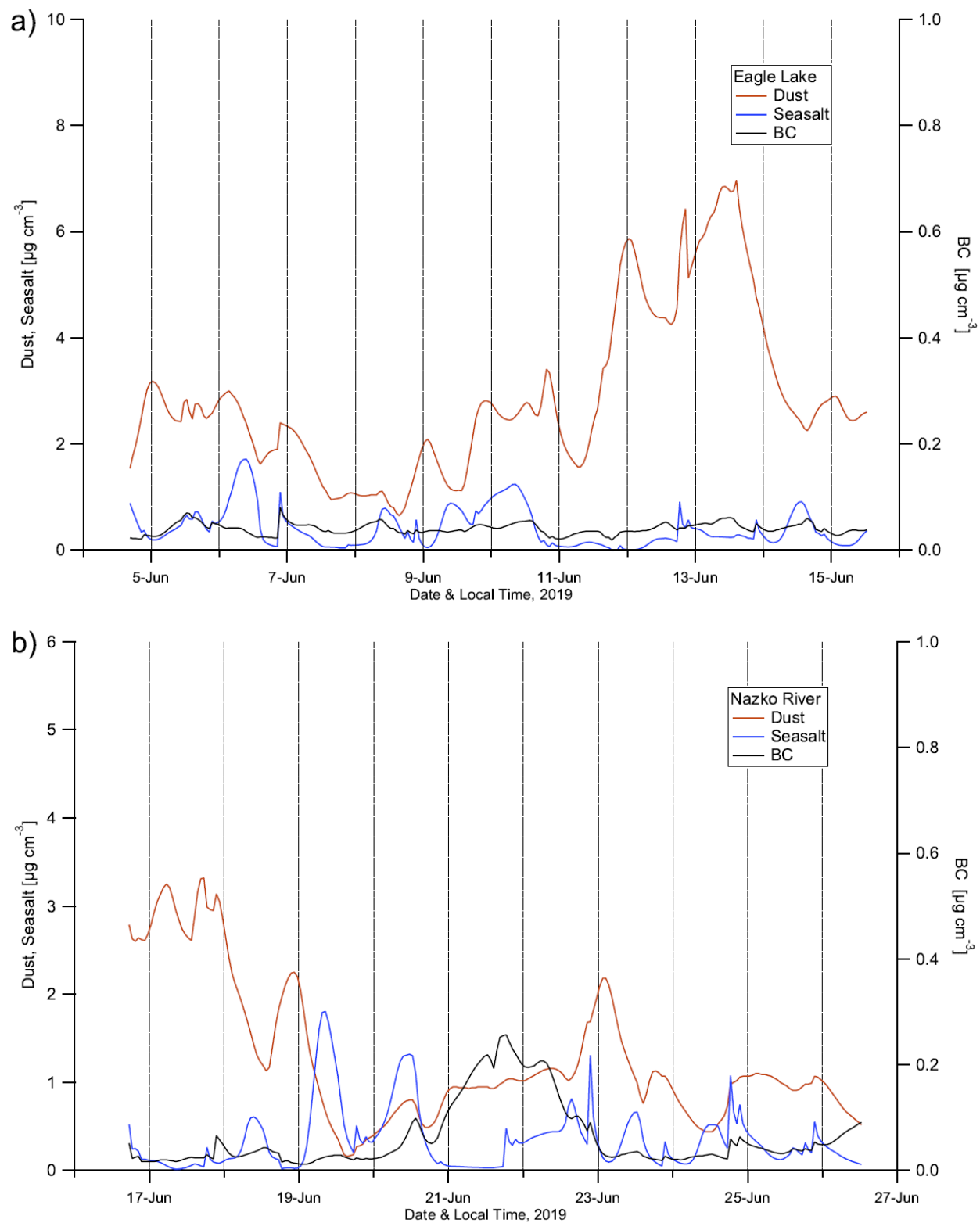


Fig. S3: Concentrations of dust, seasalt, and black carbon (BC) aerosols in the study area from the MERRA-2 data base during the sampling periods at a) Eagle Lake and b) Nazko River.

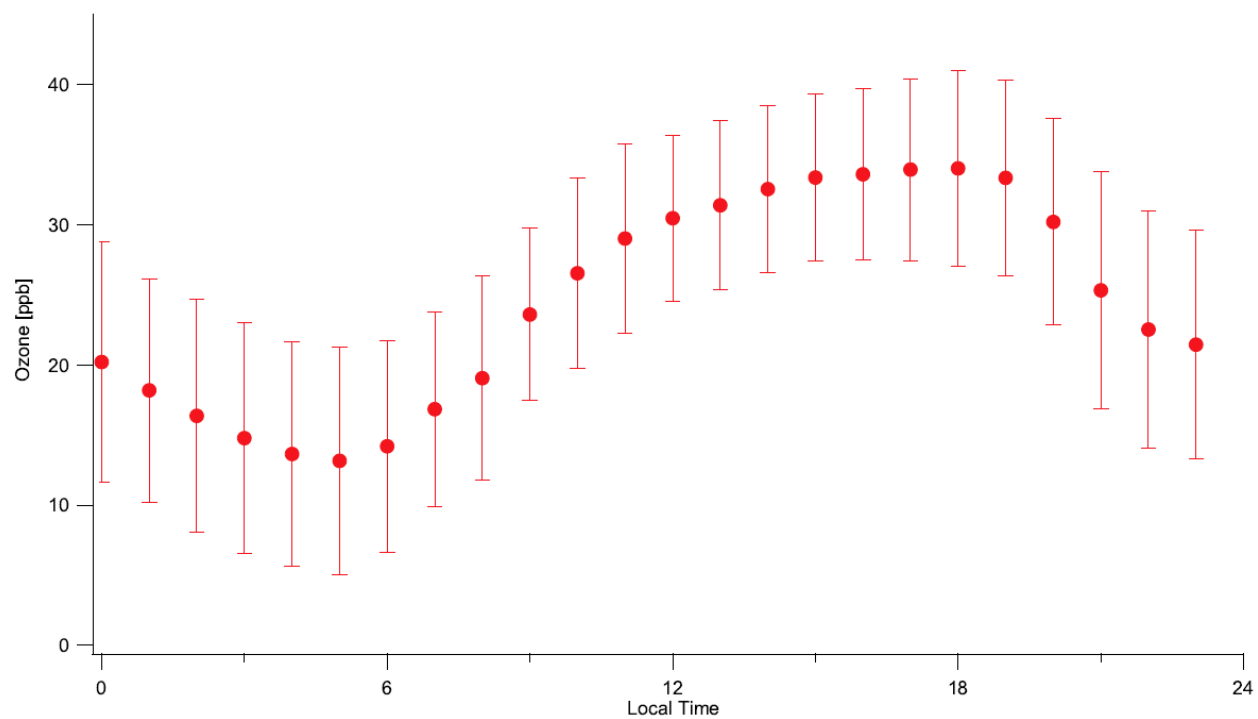


Fig. S4: Ozone concentrations during June 2019 at Williams Lake, BC (averages and standard distributions).