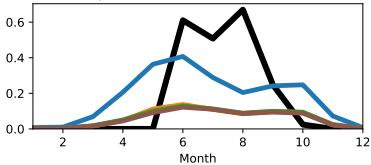
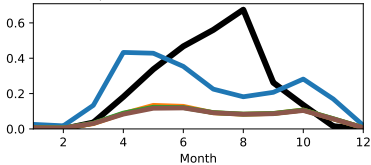


NH_4^+ wet deposition ($\text{gN m}^{-2} \text{yr}^{-1}$)



(a) Agoufou (15.34°N , 1.48°W)

NH_4^+ wet deposition ($\text{gN m}^{-2} \text{yr}^{-1}$)



(b) Katibougou (12.93°N , 7.53°W)

— OBS — FAN — CEDS — EDGAR — HTAP