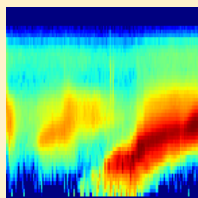


NPF events detection with Mask R-CNN

Training set

300 images with annotated masks



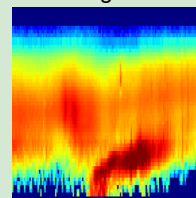
An example NPF image



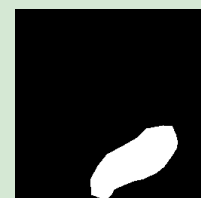
Annotated mask

Validation set

58 images with annotated masks



An example NPF image



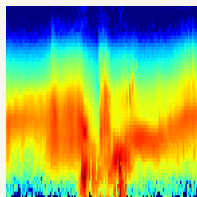
Annotated mask

Fine-tuning
parameters

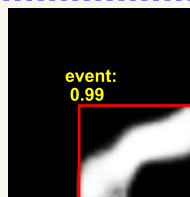
Mask R-CNN

Selecting the best
fitted parameters

Testing on images without annotations



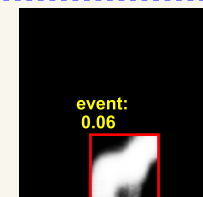
Case 1



event:
0.99

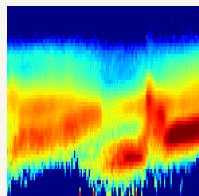


event:
0.24



event:
0.06

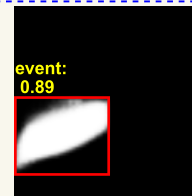
Detected masks



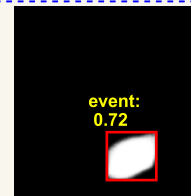
Case 2



event:
0.98



event:
0.89



event:
0.72



event:
0.12

Detected masks