



Supplement of

Updated trends of the stratospheric ozone vertical distribution in the 60° S–60° N latitude range based on the LOTUS regression model

Sophie Godin-Beekmann et al.

Correspondence to: Sophie Godin-Beekmann (sophie.godin-beekmann@latmos.ipsl.fr)

The copyright of individual parts of the supplement might differ from the article licence.

Supplement of ACP-2022-137

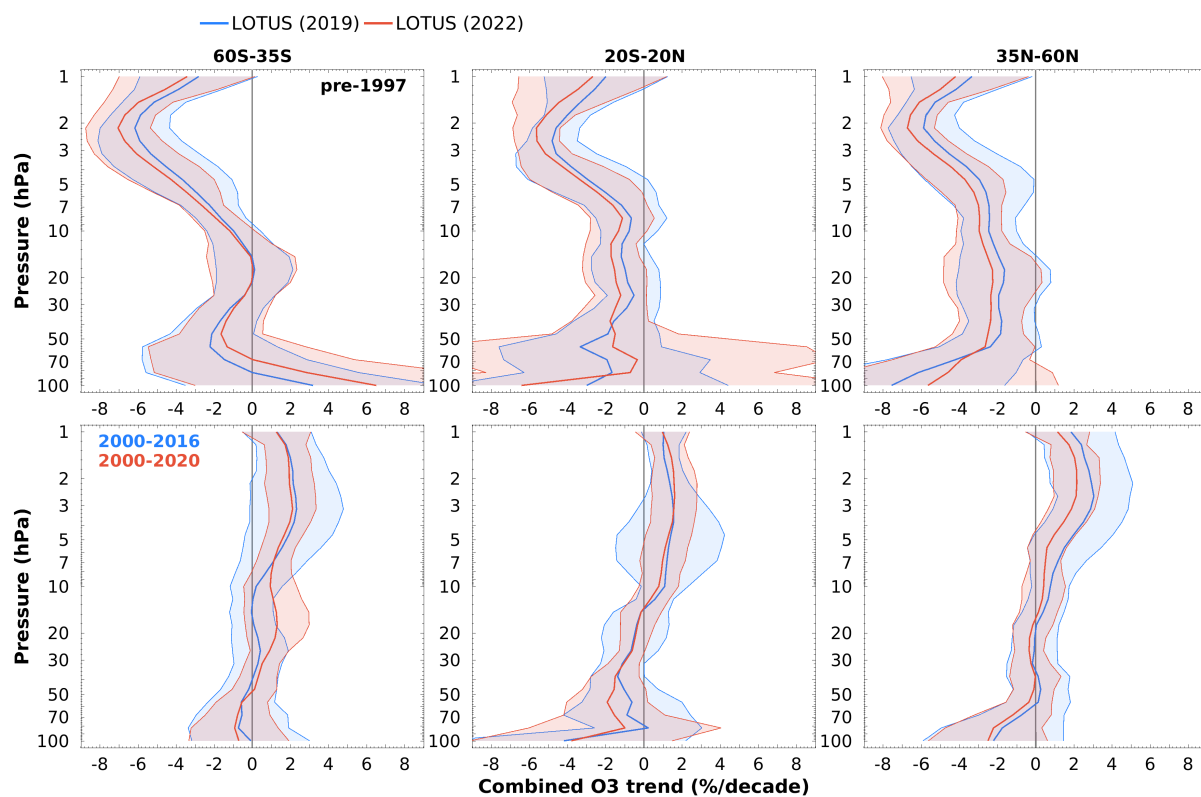


Figure S1. Combined pre-1997 (top panel) and post-2000 ozone (bottom panel) profile trend estimates and uncertainties (2-sigma) from the seven merged satellite records (for pressures larger than 50 hPa level: five records, see main text). Red (blue) solid line and light red (blue) shaded areas indicate LOTUS22 (LOTUS19) trend values and uncertainties.

C_{ij}	SBUV MOD	SBUV COH	GOZCARDS	SWOOSH	SAGE-OSIRIS-OMPS	SAGE-CCI-OMPS	SAGE-SCIA-OMPS
SBUV MOD	1.00	0.90	0.60	0.60	0.60	0.60	0.60
SBUV COH	0.90	1.00	0.60	0.60	0.60	0.60	0.60
GOZCARDS	0.60	0.60	1.00	0.95	0.60	0.65	0.60
SWOOSH	0.60	0.60	0.95	1.00	0.65	0.70	0.65
SAGE-OSIRIS-OMPS	0.60	0.60	0.60	0.65	1.00	0.82	0.80
SAGE-CCI-OMPS	0.60	0.60	0.65	0.70	0.82	1.00	0.80
SAGE-SCIA-OMPS	0.60	0.60	0.60	0.65	0.80	0.80	1.00

Table S1. Correlation coefficients between the fit residuals of the seven merged satellite ozone profile records considered in the study.