



Supplement of

Measurement report: Strong light absorption induced by aged biomass burning black carbon over the southeastern Tibetan Plateau in pre-monsoon season

Tianyi Tan et al.

Correspondence to: Min Hu (minhu@pku.edu.cn)

The copyright of individual parts of the supplement might differ from the article licence.

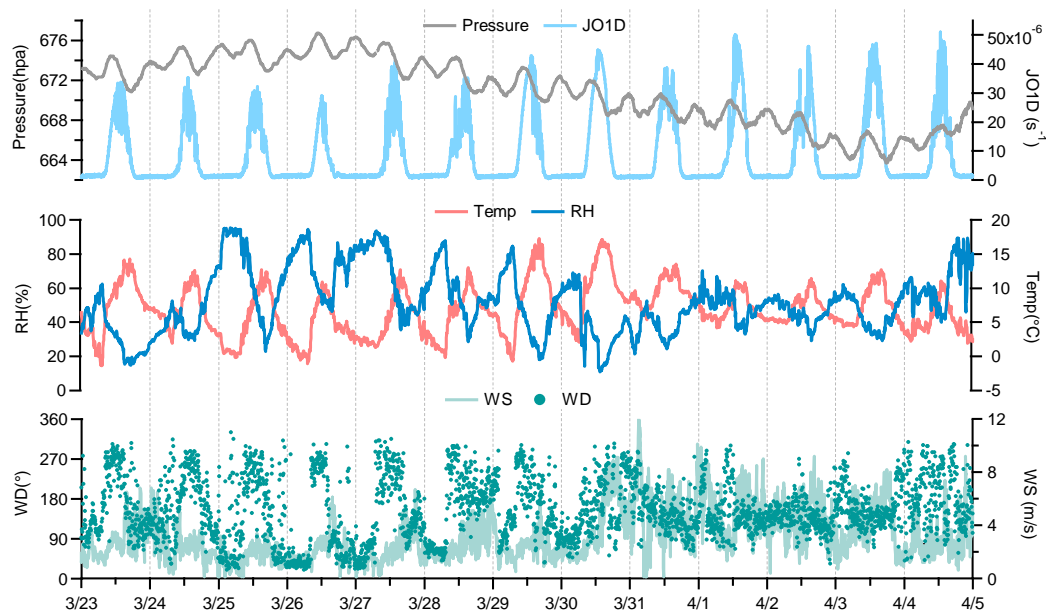


Figure S1. Meteorological conditions during the campaign.

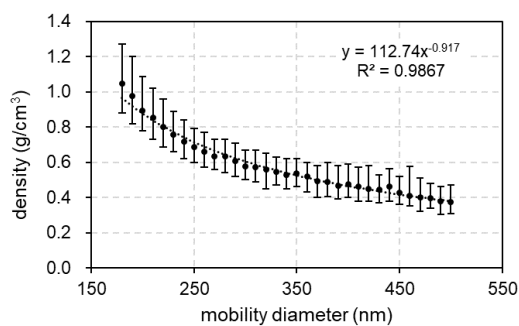


Figure S2. Size-dependently effective density of the BC core for thinly-coated BC particles.

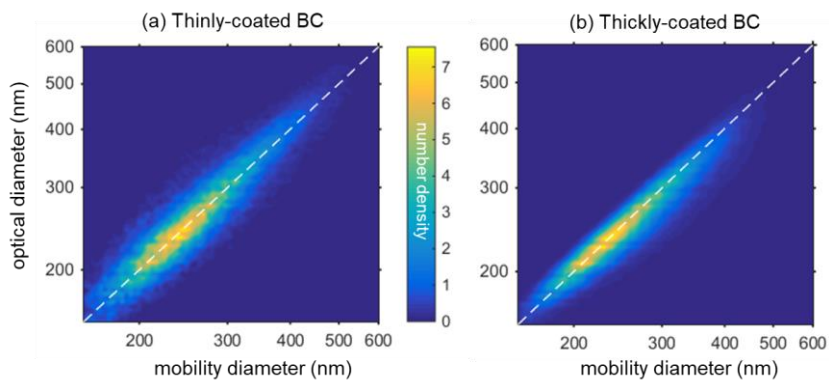


Figure S3. Comparison between optical diameter and mobility diameter for (a) thinly-coated BC and (b) thickly-coated BC.

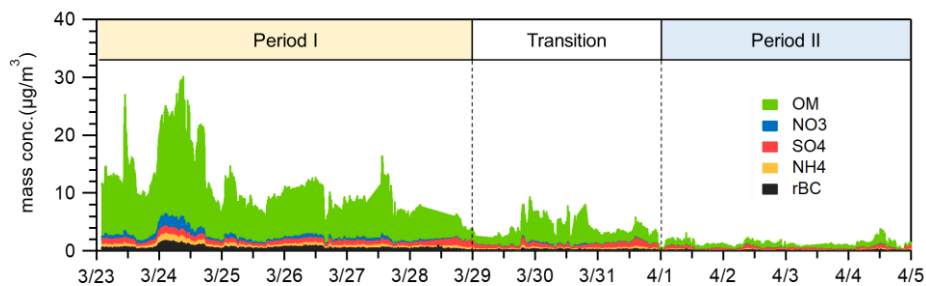
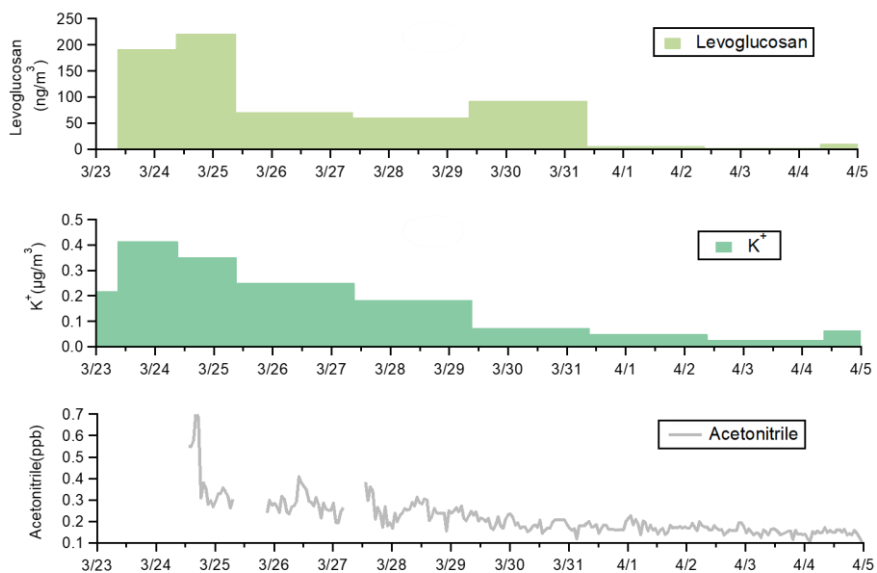


Figure S4. Time series of the aerosol mass concentrations of different chemical species.



10 **Figure S5.** Temporal variation of biomass burning tracers during the observation.

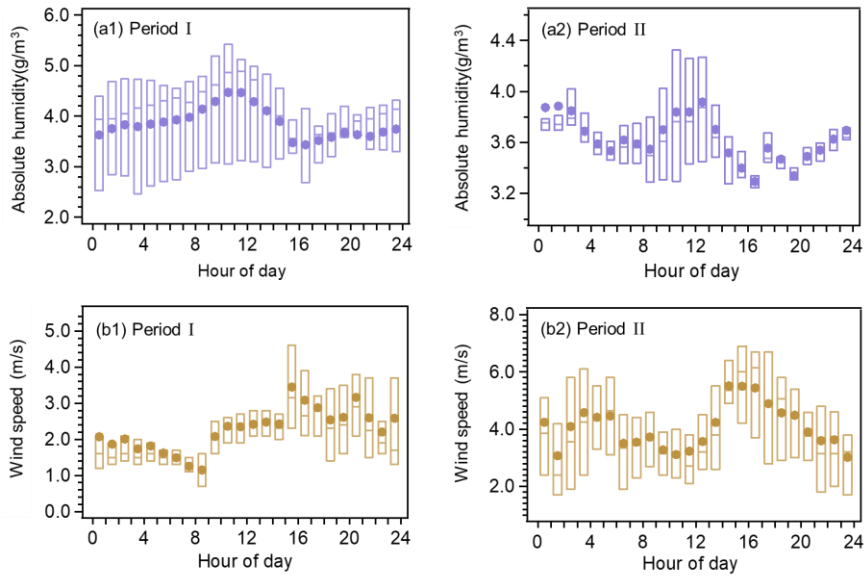


Figure S6. Diurnal variation of absolute humidity (water vapor concentration) and wind speed during Period I and Period II. The solid dots are the mean values. The rectangles cover the data from 25% to 75% quantile. The short lines in the middle of the rectangles represent the median values.

15