



*Supplement of*

## **Observed decreases in on-road CO<sub>2</sub> concentrations in Beijing during COVID-19 restrictions**

**Di Liu et al.**

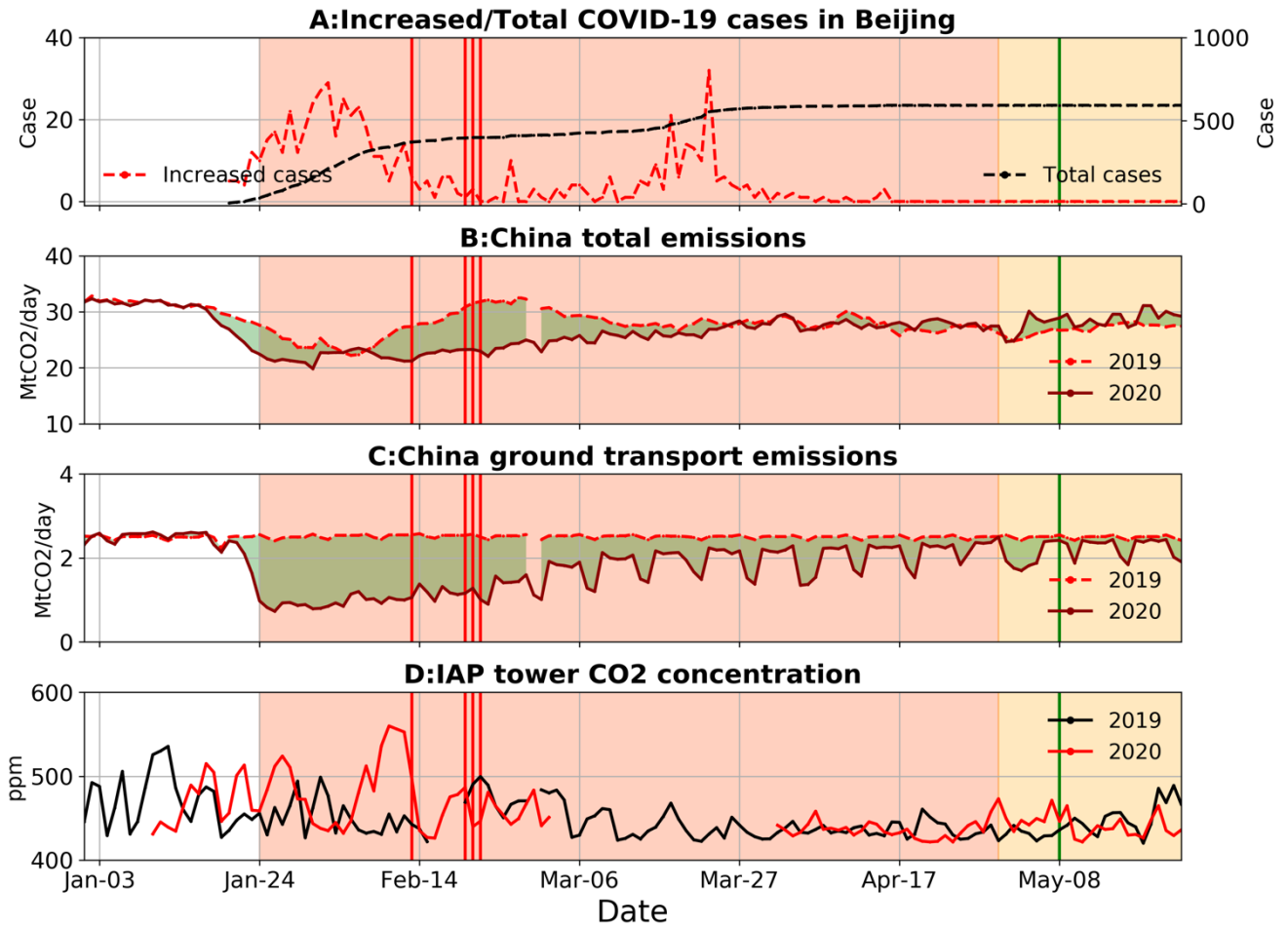
*Correspondence to:* Pengfei Han (pfhan@mail.iap.ac.cn) and Bo Yao (yaob@cma.gov.cn)

The copyright of individual parts of the supplement might differ from the article licence.

# List of Supplemental Figures

10	Figure S1. (A) Confirmed increased cases (red) and total cases (black) of COVID-19 in Beijing in 2020; the red/yellow region are the Level-1/2 response periods; vertical lines indicate the on-roads observation dates, and red/green lines indicate during and after COVID-19 restrictions, respectively. One trip was conducted on 20 <sup>th</sup> February 2019, which was not plotted in Figure S1. (B) Daily CO <sub>2</sub> emissions in China in the five months of 2019 (dotted line) and 2020 (solid line), data from Liu et al. (2020). (C) Daily CO <sub>2</sub> emissions from ground transport in China in the first five months of 2019 and 2020, data from Liu et al. (2020). (D) Comparison of the IAP tower CO <sub>2</sub> concentrations in 2019 (black) and 2020 (red).....3
15	
20	Figure S2. Traffic conditions in the working hours during COVID-19 restrictions (A) on 13 <sup>th</sup> February 2020; (B) 20 <sup>th</sup> February 2020; (C) 21 <sup>st</sup> February 2020; and (D) 22 <sup>nd</sup> February 2020.....4
25	Figure S3. Simulated changes in the terrestrial biosphere-atmosphere flux (A for $F_{TA}$ ) and its drivers (B for temperature; C for precipitation) in Beijing during 2000-2020. Grey lines indicate the value for each year during 2000-2019; black lines denote the average value for each month during 2000-2019; grey regions refer to one standard deviation; red lines refer to the value in 2020.....5
	Figure S4. CO <sub>2</sub> concentrations at the Beijing Shangdianzi station from 1 <sup>st</sup> January 2018 to 1 <sup>st</sup> June 2020. Black points indicate minute-resolution data, and red points denote daily minimum data.....6

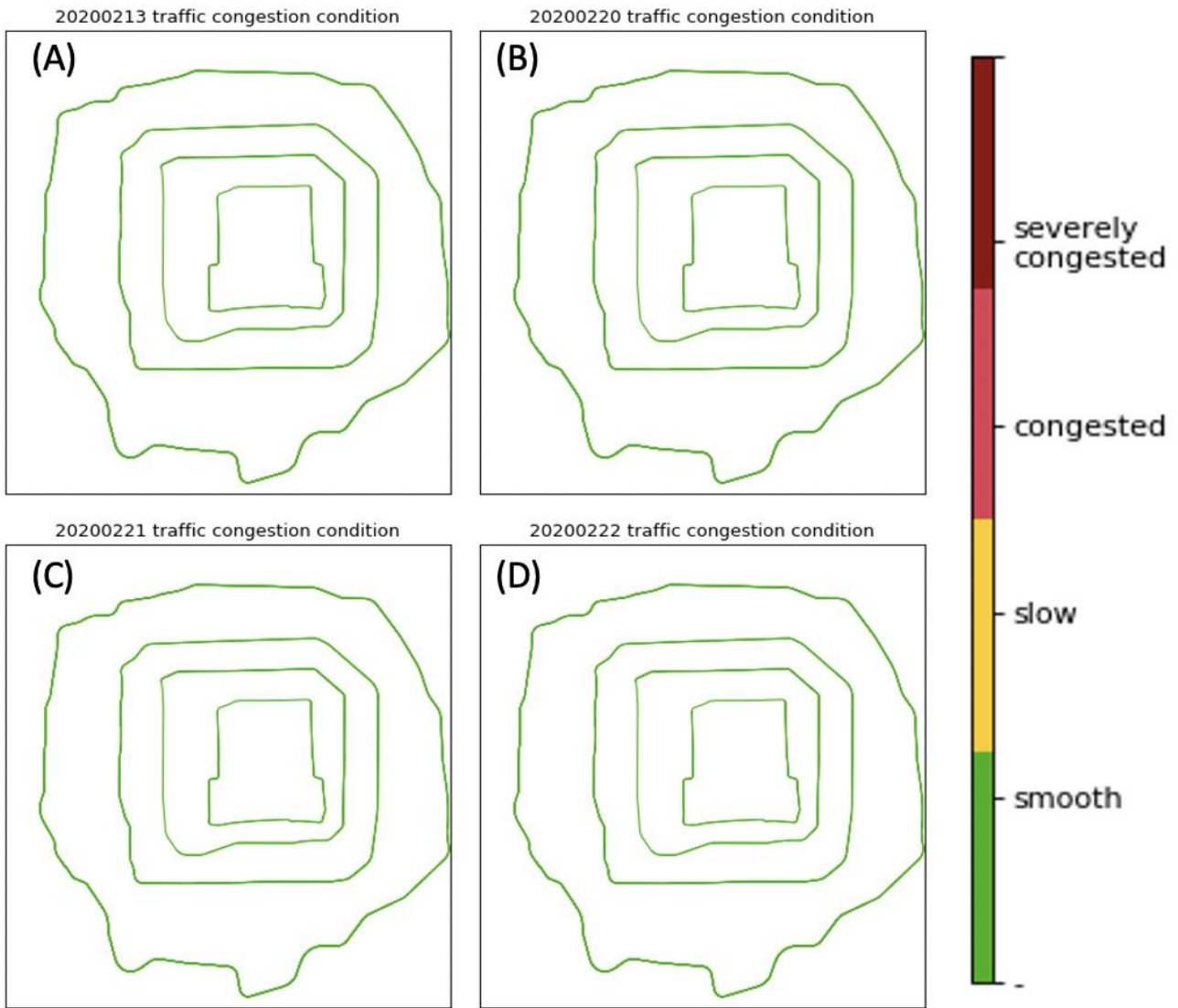
# Supplementary



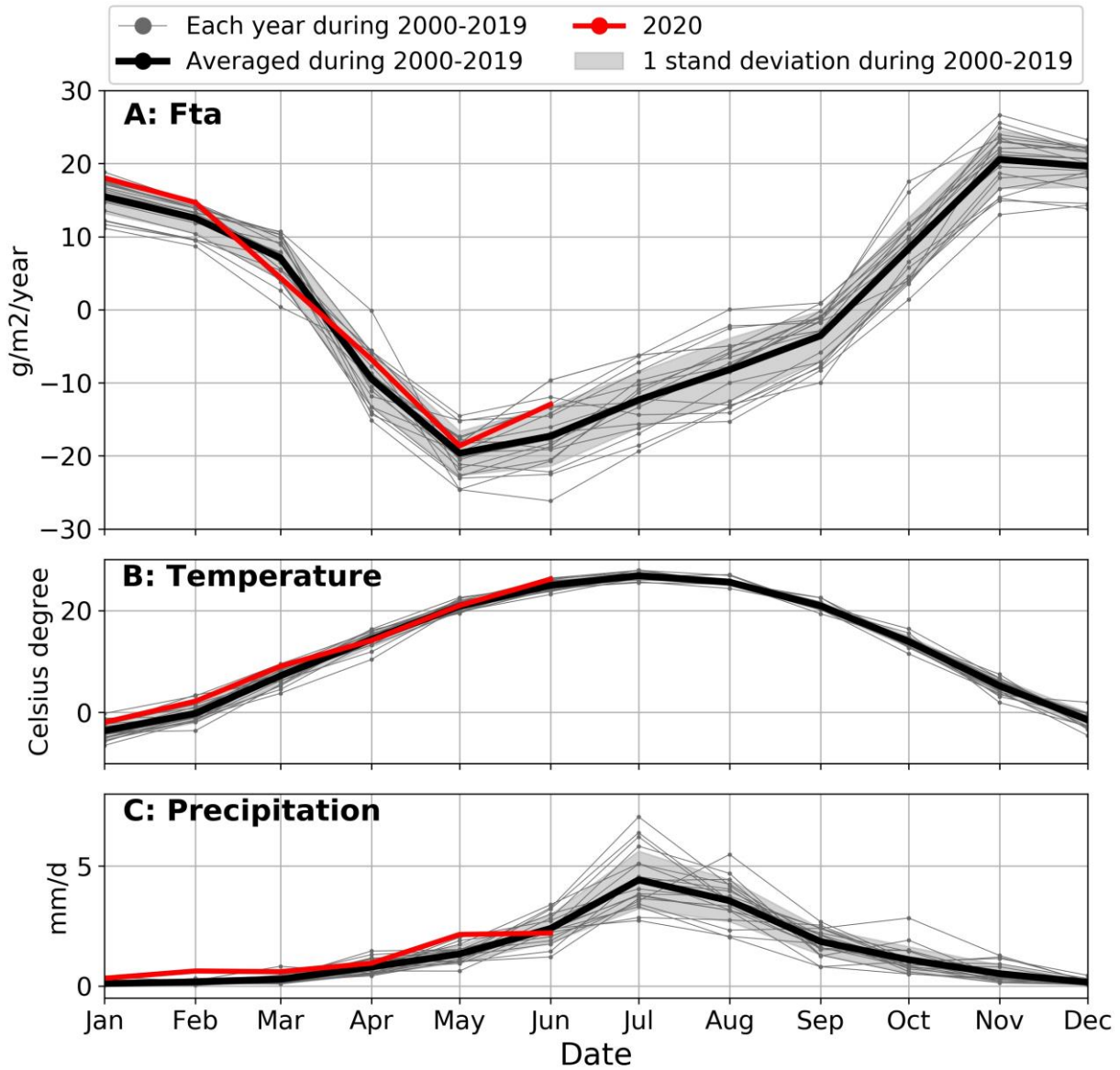
30

Figure S1. (A) Confirmed increased cases (red) and total cases (black) of COVID-19 in Beijing in 2020; the red/yellow region are the Level-1/2 response periods; vertical lines indicate the on-roads observation dates, and red/green lines indicate during and after COVID-19 restrictions, respectively. One trip was conducted on 20<sup>th</sup> February 2019, which was not plotted in Figure S1. (B) Daily CO<sub>2</sub> emissions in China in the five months of 2019 (dotted line) and 2020 (solid line), data from Liu et al. (2020). (C) Daily CO<sub>2</sub> emissions from ground transport in China in the first five months of 2019 and 2020, data from Liu et al. (2020). (D) Comparison of the IAP tower CO<sub>2</sub> concentrations in 2019 (black) and 2020 (red).

35

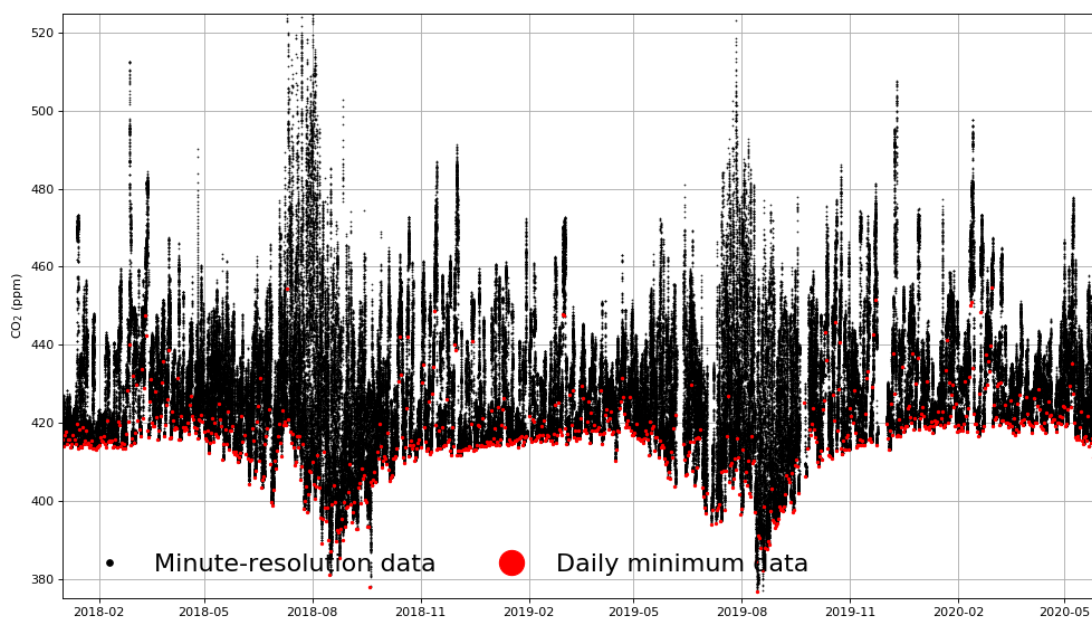


40 *Figure S2. Traffic conditions in the working hours during COVID-19 restrictions (A) on 13<sup>th</sup> February 2020; (B) 20<sup>th</sup> February 2020; (C) 21<sup>st</sup> February 2020; and (D) 22<sup>nd</sup> February 2020.*



45 *Figure S3. Simulated changes in the terrestrial biosphere-atmosphere flux (A for  $F_{TA}$ ) and its drivers (B for temperature; C for precipitation) in Beijing during 2000-2020. Grey lines indicate the value for each year during 2000-2019; black lines denote the average value for each month during 2000-2019; grey regions refer to one standard deviation; red lines refer to the value in 2020.*

## Beijing Shangdianzi Station



50 *Figure S4. CO<sub>2</sub> concentrations at the Beijing Shangdianzi station from 1<sup>st</sup> January 2018 to 1<sup>st</sup> June 2020. Black points indicate minute-resolution data, and red points denote daily minimum data.*

## 55 **Reference**

Liu, Z., Ciais, P., Deng, Z., Lei, R., Davis, S. J., Feng, S., Zheng, B., Cui, D., Dou, X., Zhu, B., Guo, R., Ke, P., Sun, T., Lu, C., He, P., Wang, Y., Yue, X., Wang, Y., Lei, Y., Zhou, H., Cai, Z., Wu, Y., Guo, R., Han, T., Xue, J., Boucher, O., Boucher, E., Chevallier, F., Tanaka, K., Wei, Y., Zhong, H., Kang, C., Zhang, N., Chen, B., Xi, F., Liu, M., Bréon, Lu, Y., Zhang, Q., Guan, D., Gong, P., Kammen, D. M., He, K., and Schellnhuber, H. J.: Near-real-time monitoring of global CO<sub>2</sub> emissions reveals the effects of the  
60 COVID-19 pandemic, Nat Commun, 14, 11, 5172, <https://doi.org/10.1038/s41467-020-18922-7>, 2020.