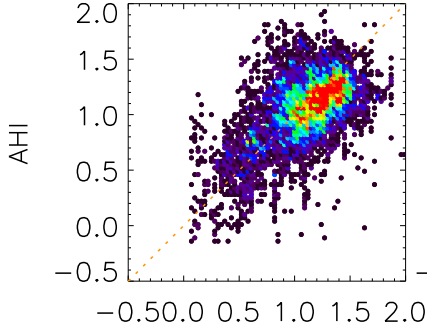


α

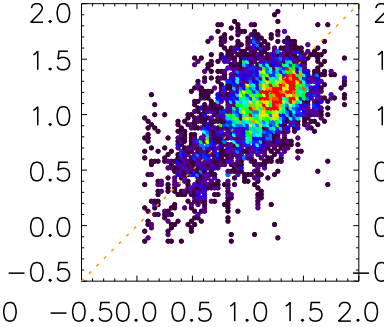
(a) $\chi^2:20.0, S_{\eta_f}:20.0$

E:0.271,B:-0.052,R: 0.581
Y= 0.559 X + 0.447



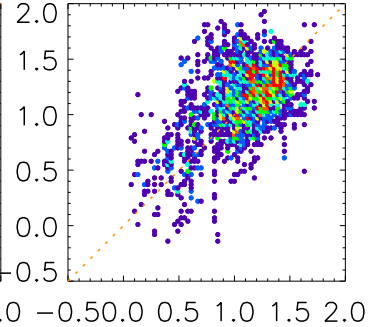
(b) $\chi^2:20.0, S_{\eta_f}: 0.5$

E:0.274,B:-0.034,R: 0.593
Y= 0.595 X + 0.420



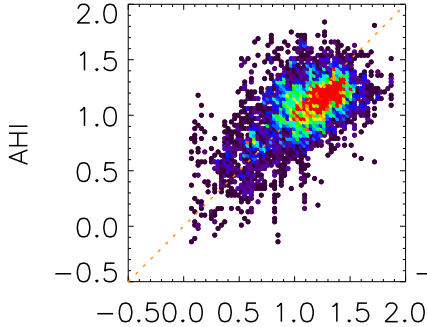
(c) $\chi^2:20.0, S_{\eta_f}: 0.2$

E:0.311,B: 0.062,R: 0.517
Y= 0.542 X + 0.569



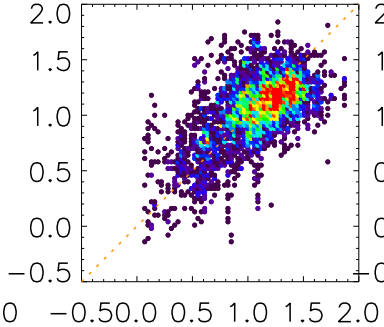
(d) $\chi^2: 0.5, S_{\eta_f}:20.0$

E:0.248,B:-0.046,R: 0.612
Y= 0.539 X + 0.475



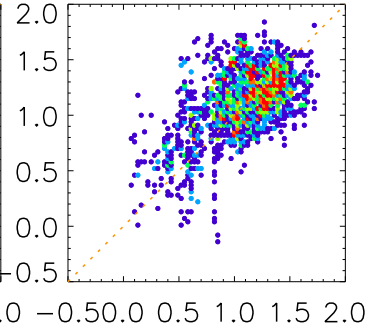
(e) $\chi^2: 0.5, S_{\eta_f}: 0.5$

E:0.254,B:-0.030,R: 0.618
Y= 0.563 X + 0.459



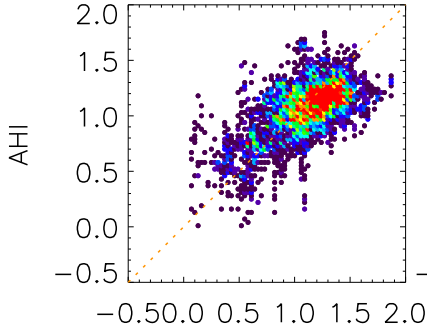
(f) $\chi^2: 0.5, S_{\eta_f}: 0.2$

E:0.286,B: 0.045,R: 0.546
Y= 0.515 X + 0.584



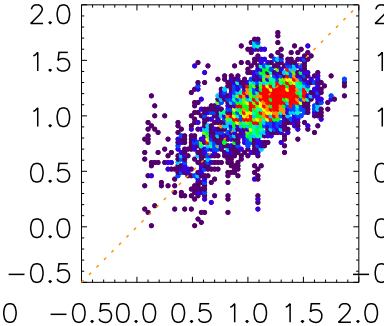
(g) $\chi^2: 0.2, S_{\eta_f}:20.0$

E:0.235,B:-0.043,R: 0.615
Y= 0.491 X + 0.533



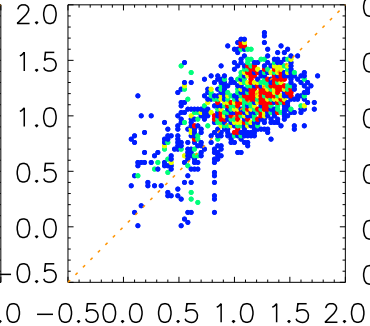
(h) $\chi^2: 0.2, S_{\eta_f}: 0.5$

E:0.238,B:-0.028,R: 0.621
Y= 0.509 X + 0.520



(i) $\chi^2: 0.2, S_{\eta_f}: 0.2$

E:0.259,B: 0.029,R: 0.617
Y= 0.525 X + 0.551



Freq. [%]

