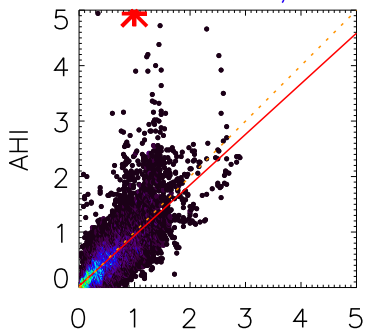
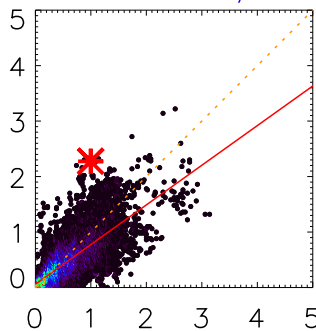
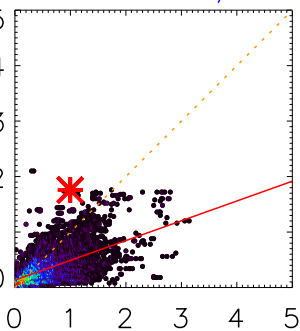
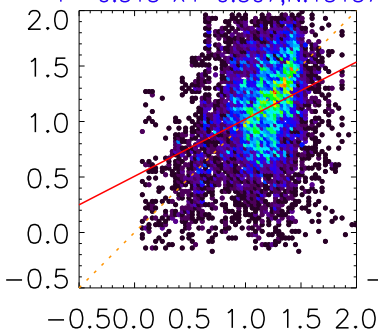
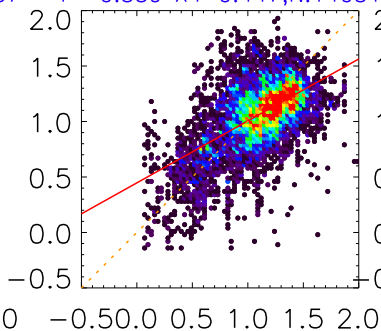
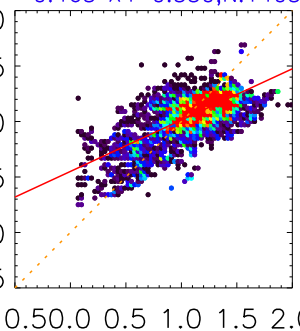
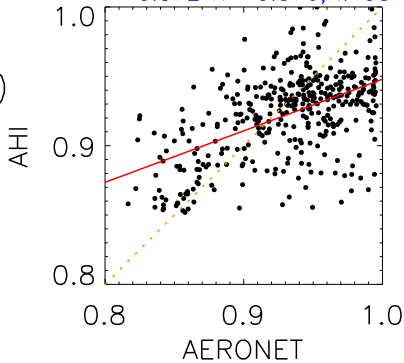
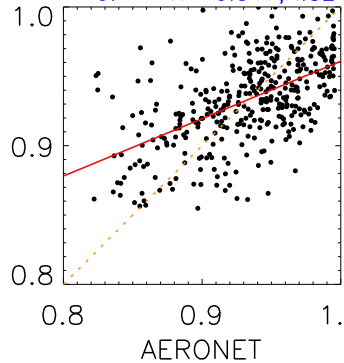
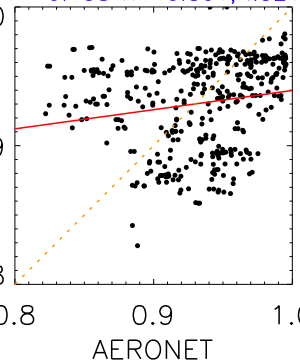


$\tau$ (a)  $\tau$ : originalE:0.307,B:-0.023,R: 0.762  
Y= 0.912 X+ 0.026,N:13714(b)  $\tau$ : newE:0.290,B:-0.099,R: 0.758  
Y= 0.715 X+ 0.059,N:14711(c)  $\tau$ : a prioriE:0.399,B:-0.224,R: 0.572  
Y= 0.357 X+ 0.133,N:14711(d)  $\alpha$ : originalE:0.429,B:-0.048,R: 0.353  
Y= 0.515 X+ 0.507,N:13137(e)  $\alpha$ : newE:0.271,B:-0.052,R: 0.581  
Y= 0.559 X+ 0.447,N:14031(f)  $\alpha$ : a prioriE:0.223,B:-0.057,R: 0.684  
Y= 0.463 X+ 0.550,N:14031 $\omega$ (g)  $\omega$ : originalE:0.039,B:-0.009,R: 0.533  
Y= 0.372 X+ 0.576,N:493(h)  $\omega$ : newE:0.035,B: 0.000,R: 0.550  
Y= 0.414 X+ 0.547,N:521(i)  $\omega$ : a prioriE:0.048,B:-0.002,R: 0.176  
Y= 0.138 X+ 0.801,N:521

Freq. [%]

