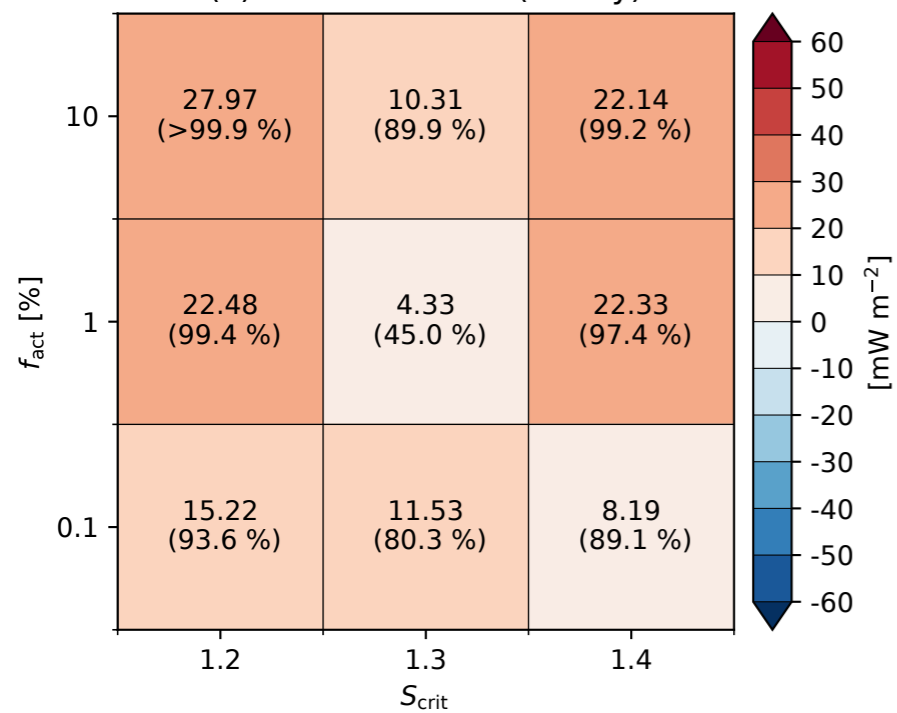
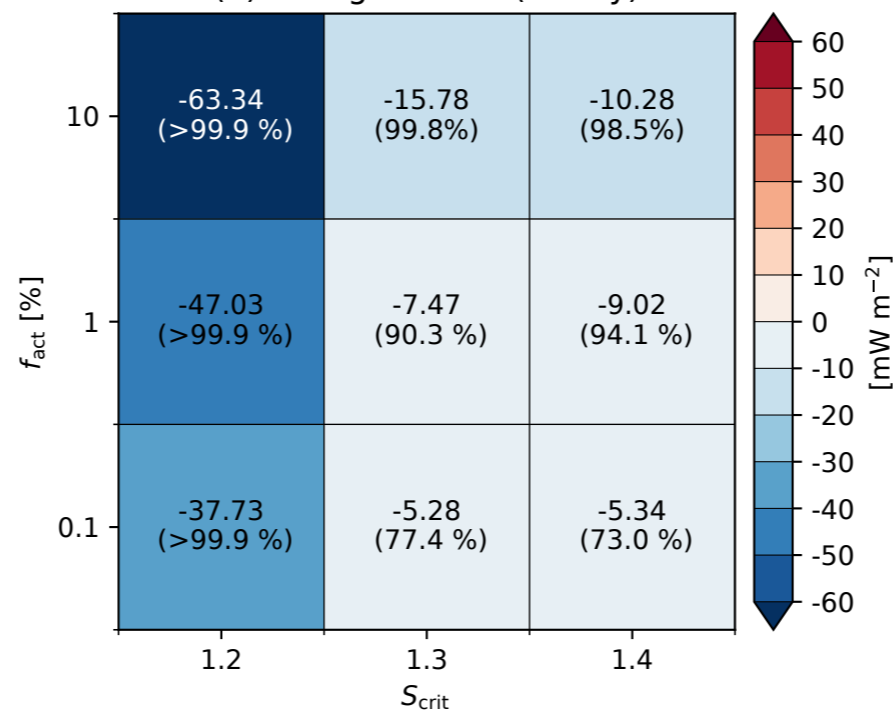


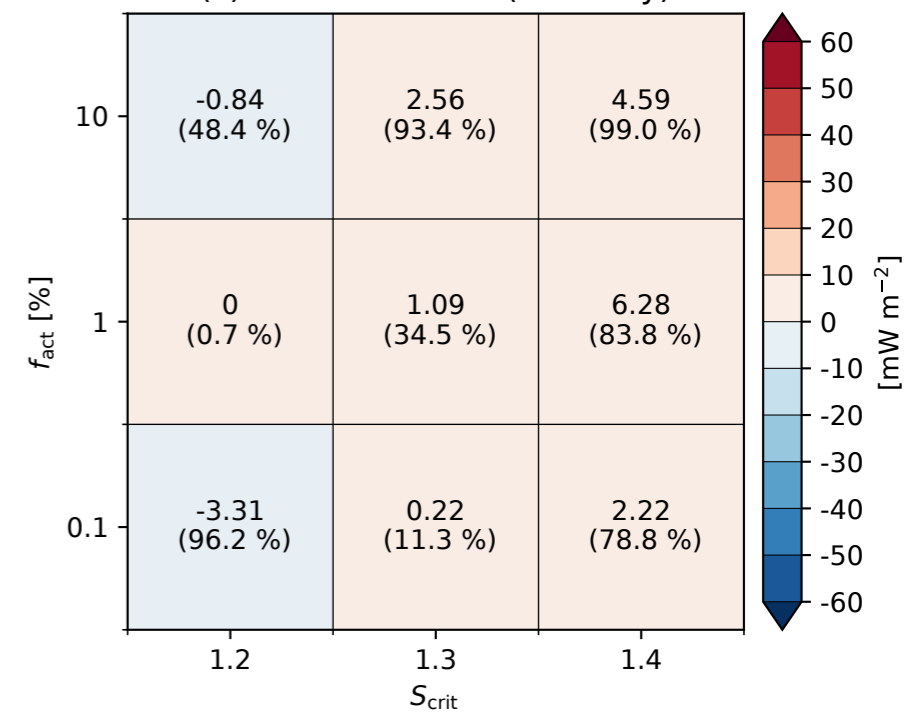
(a) - Shortwave RF (all-sky)



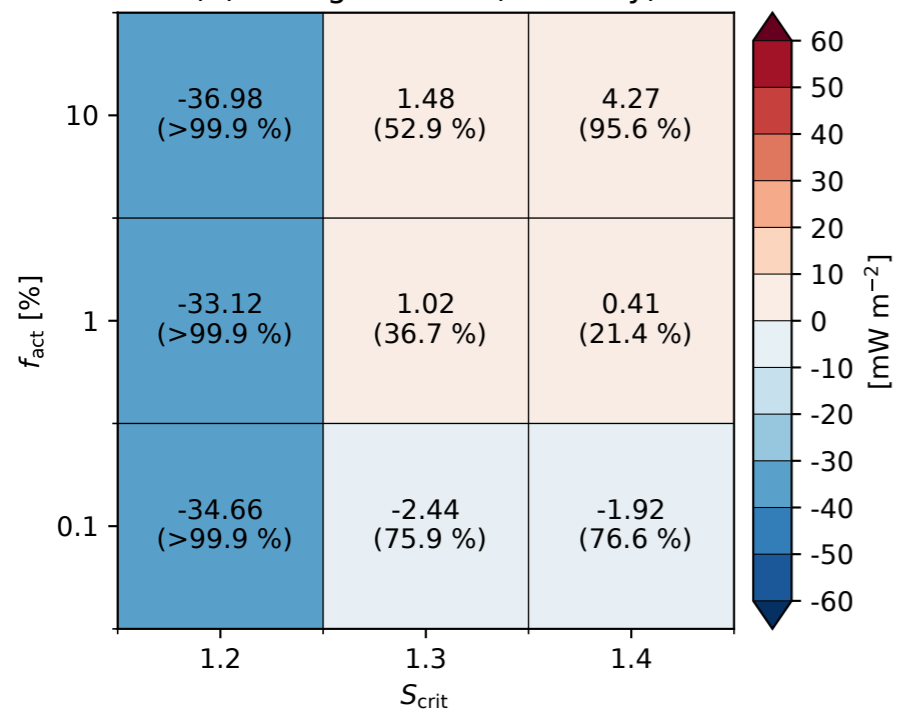
(b) - Longwave RF (all-sky)



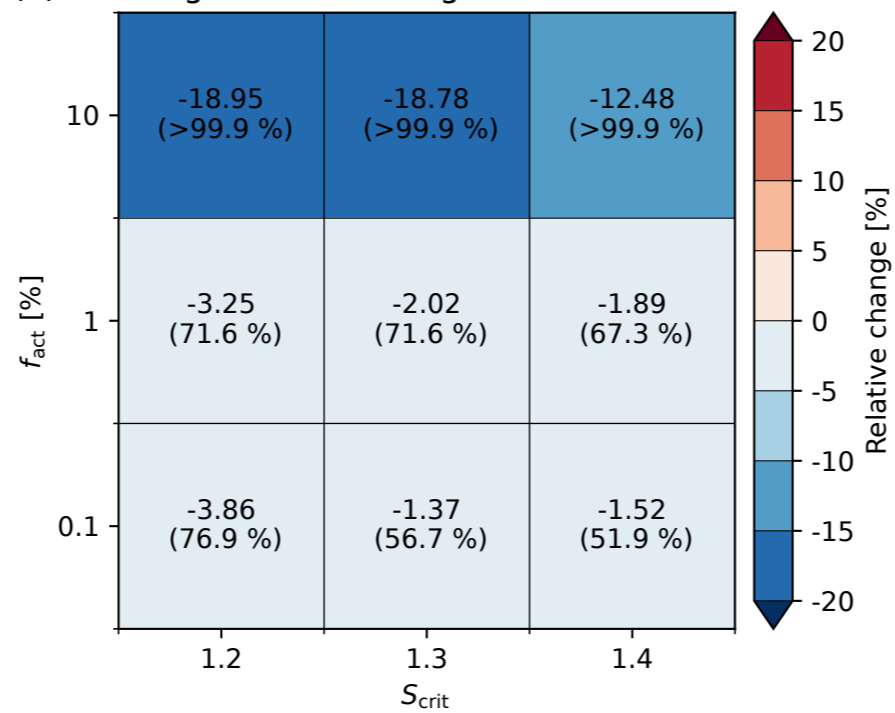
(c) - Shortwave RF (clear-sky)



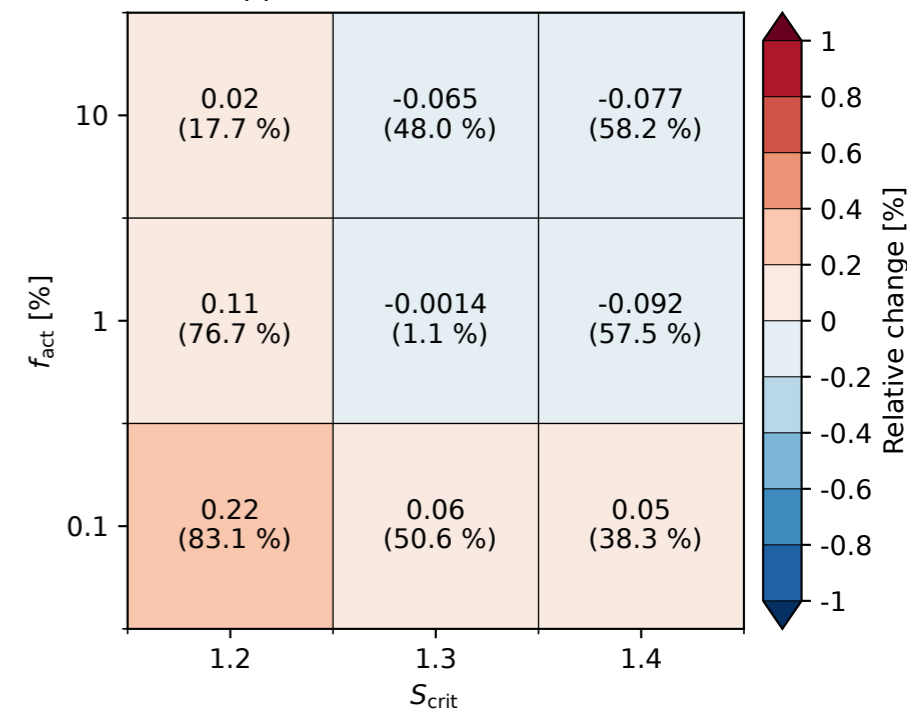
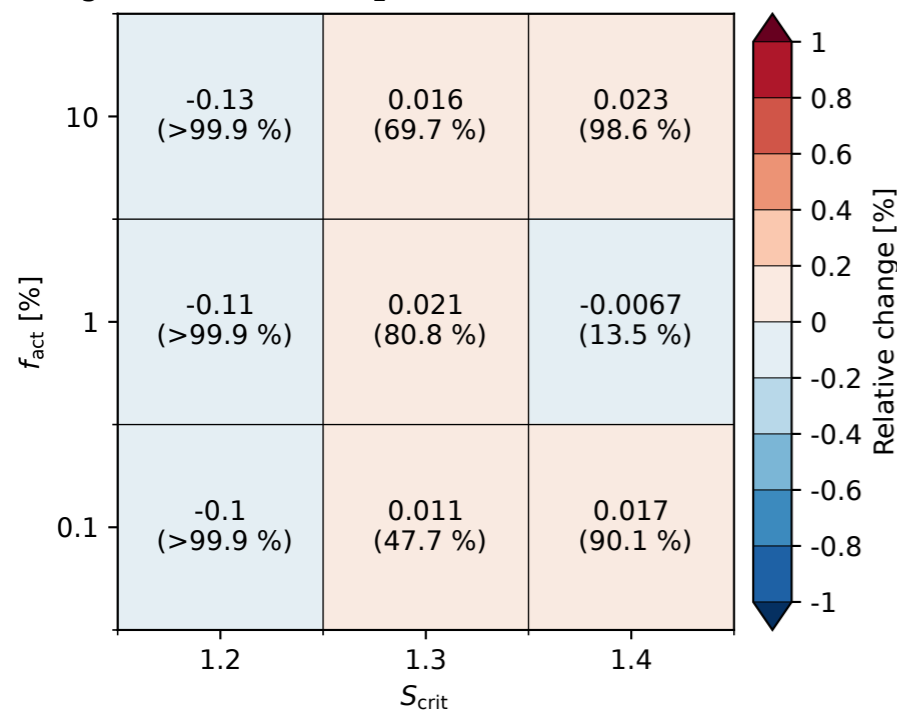
(d) - Longwave RF (clear-sky)



(e) - Homogeneous freezing fraction above 400 hPa



(f) - ICNC above 400 hPa

(g) - Total water (H₂O + IWC) above 400 hPa

(h) - Cloud frequency above 400 hPa

