



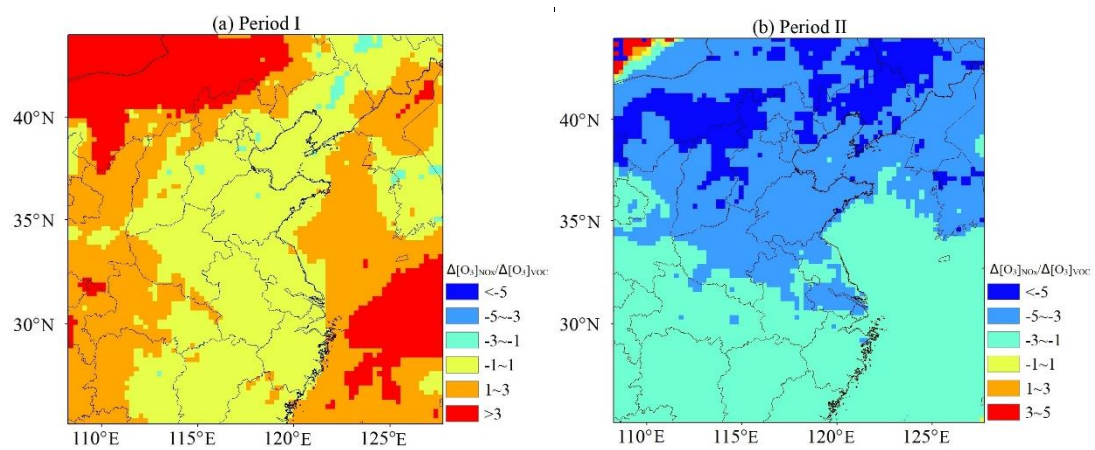
*Supplement of*

## **Nonlinear responses of particulate nitrate to $\text{NO}_x$ emission controls in the megalopolises of China**

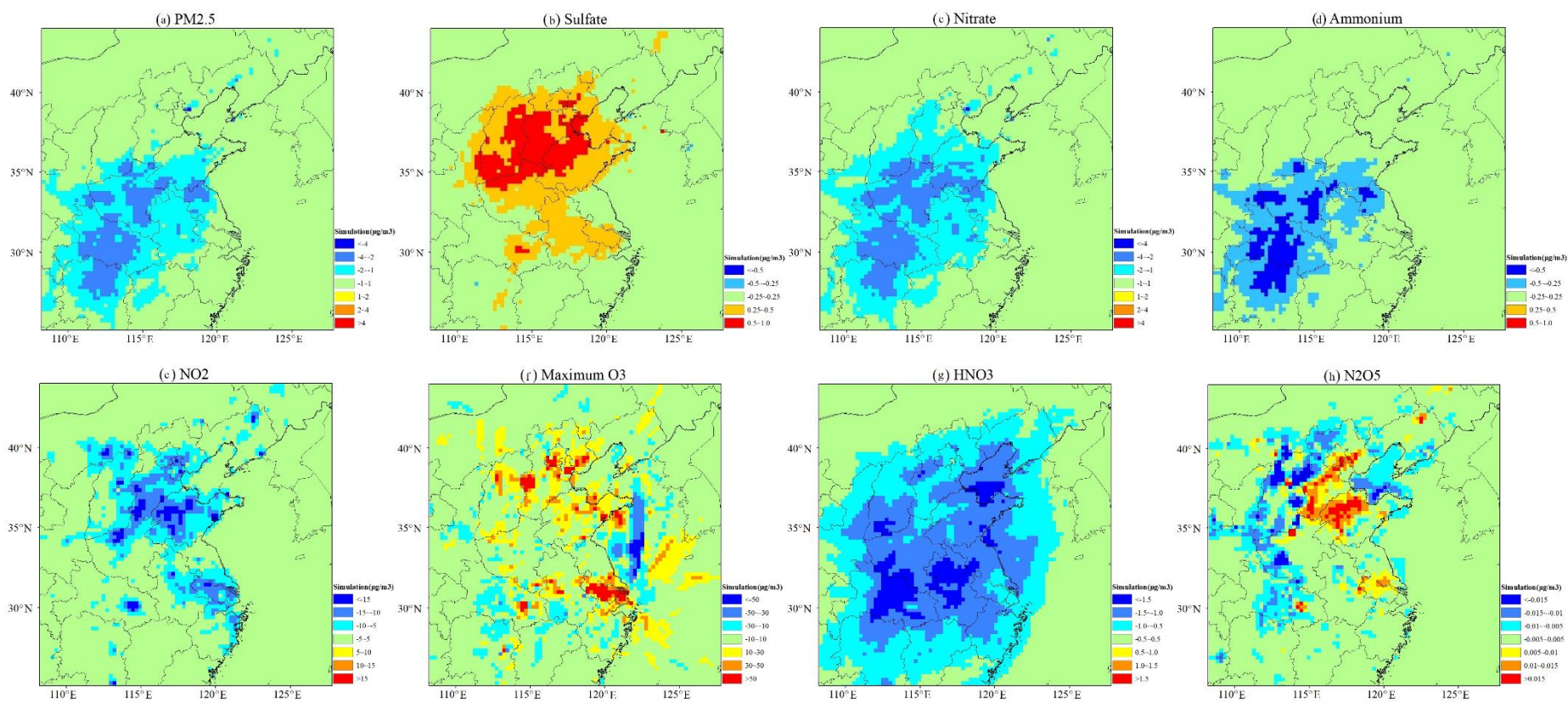
**Mengmeng Li et al.**

*Correspondence to:* Mengmeng Li (mengmengli2015@nju.edu.cn)

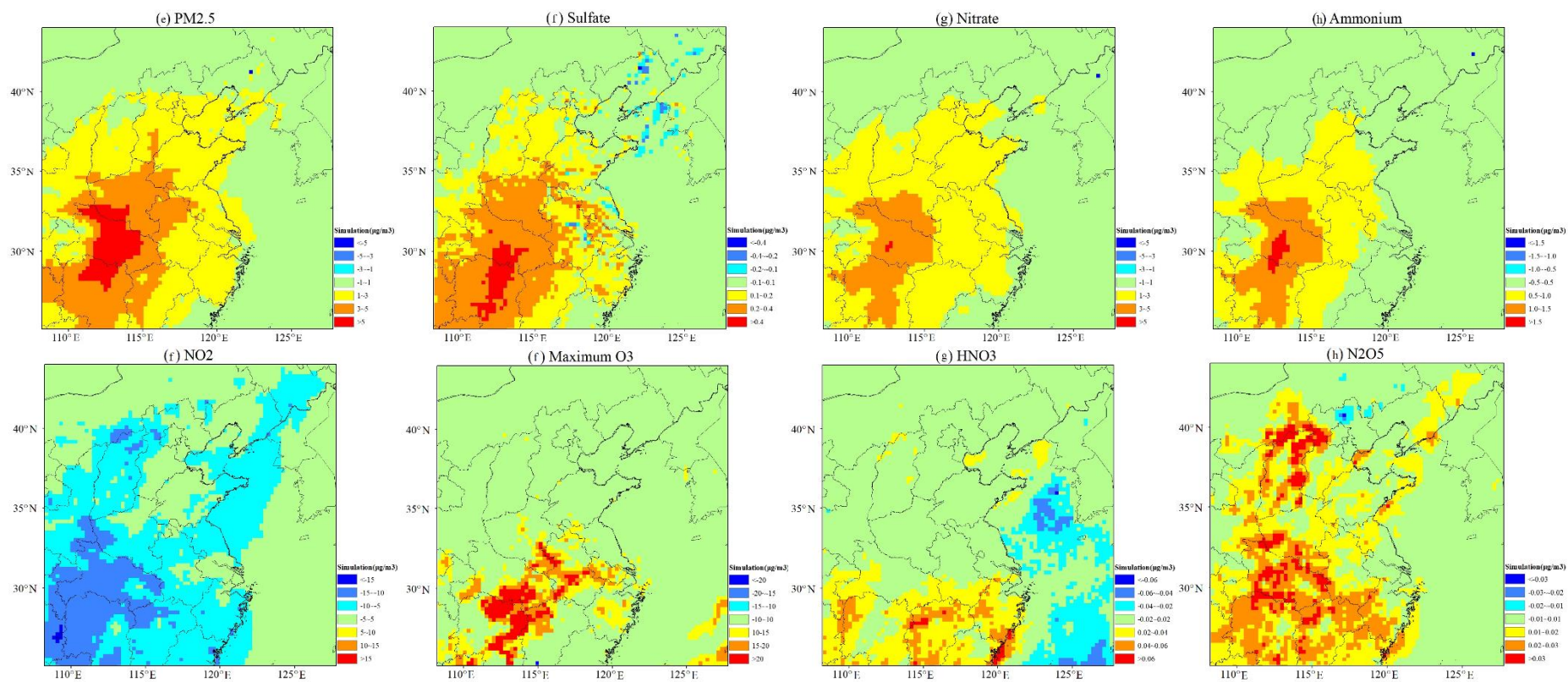
The copyright of individual parts of the supplement might differ from the article licence.



**Fig. S1.** Calculated surface ozone sensitivity ( $\Delta[O_3]_{NOx}/\Delta[O_3]_{VOCs}$ ) in China during (a) Period I and (b) Period II.



**Fig. S2.** Changes of the concentrations for surface PM<sub>2.5</sub>, sulfate, nitrate, ammonium, NO<sub>2</sub>, daily-maximum O<sub>3</sub>, HNO<sub>3</sub> and N<sub>2</sub>O<sub>5</sub> in response to the 2012–2016 NO<sub>x</sub> emission reductions in China during Period I.



**Fig. S3.** Same as Figure S2, but for Period II.