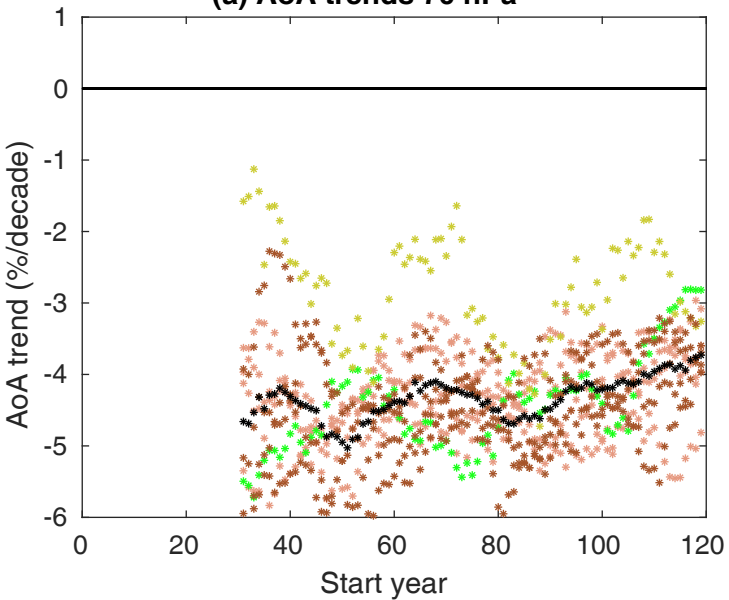
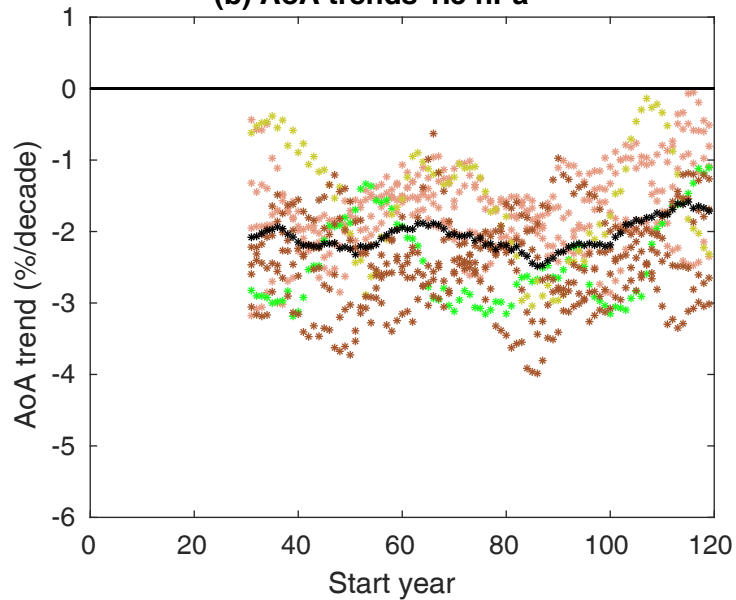
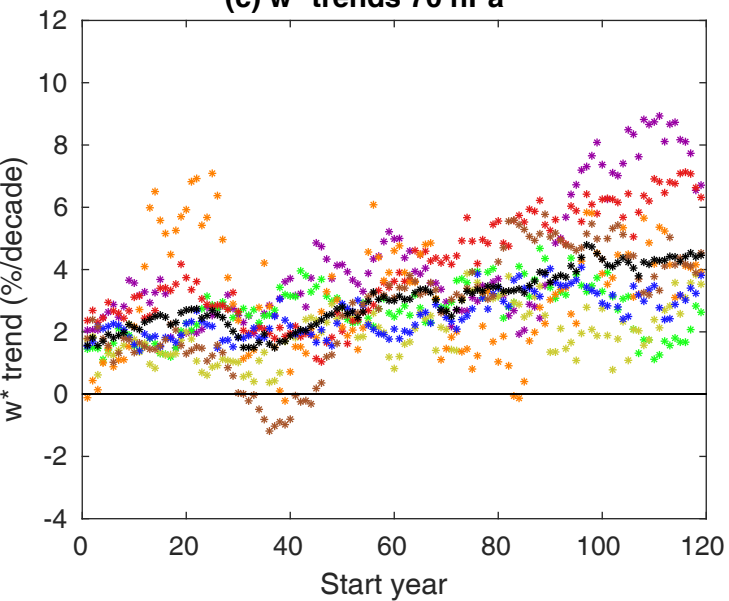
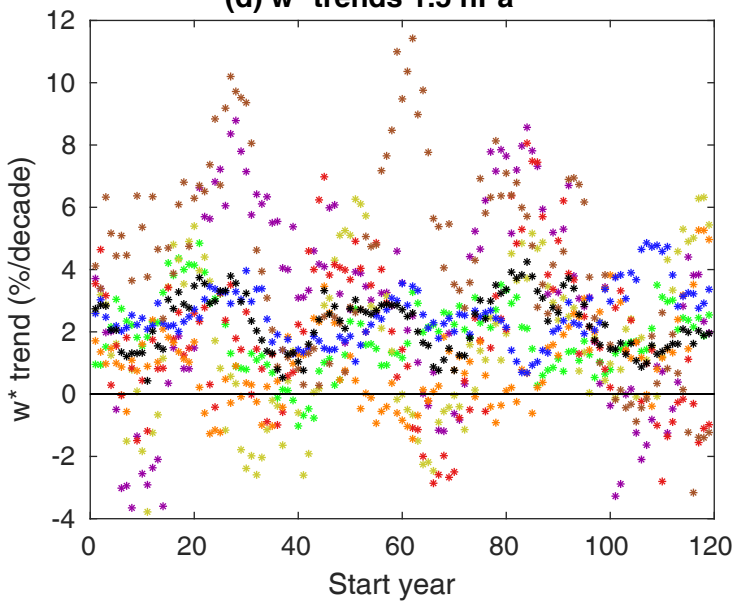


(a) AoA trends 70 hPa**(b) AoA trends 1.5 hPa****(c) w^* trends 70 hPa****(d) w^* trends 1.5 hPa**

CNRM-ESM2-1

CESM2-WACCM

GFDL-ESM4

GISS-E2-2-G

HadGEM3-GC31-LL

MIROC6

MRI-ESM2-0

UKESM1-0-LL

MMM