



Supplement of

Reduced light absorption of black carbon (BC) and its influence on BC-boundary-layer interactions during “APEC Blue”

Meng Gao et al.

Correspondence to: Meng Gao (mmgao2@hkbu.edu.hk) and Jianlin Hu (jianlinhu@nuist.edu.cn)

The copyright of individual parts of the supplement might differ from the article licence.

Table S1. Complex refractive index for major aerosol components in WRF-Chem

Components	real	imaginary
BC	1.85	0.71
Dust	1.55	0.006
Organics	1.45	0
NH ₄ Cl	1.50	0
NH ₄ NO ₃	1.50	0
NH ₄ HSO ₄	1.47	0
NA ₂ SO ₄	1.50	0

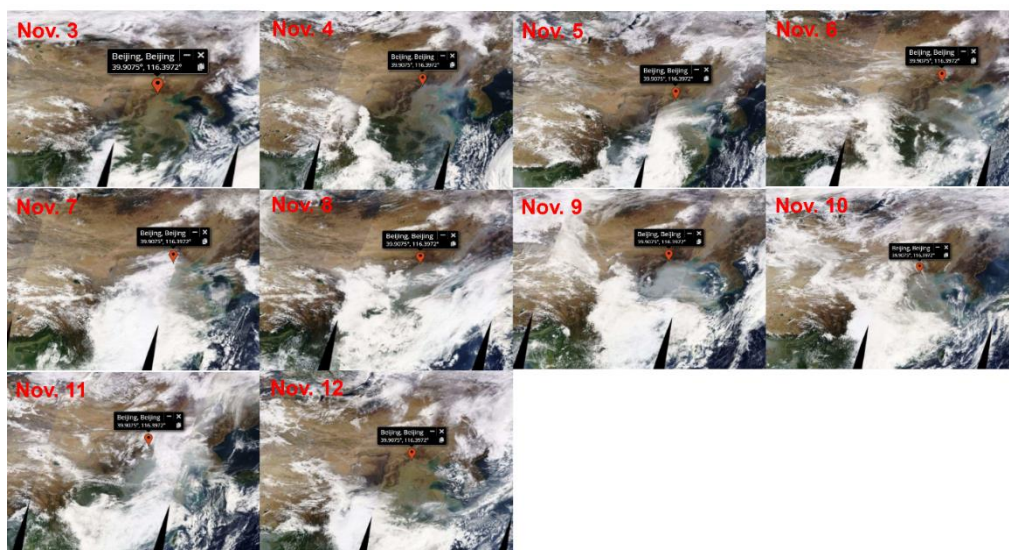


Figure S1. Satellite monitored clouds over East Asia during the APEC week (Terra/MODIS corrected Reflectance obtained from <https://worldview.earthdata.nasa.gov/>).

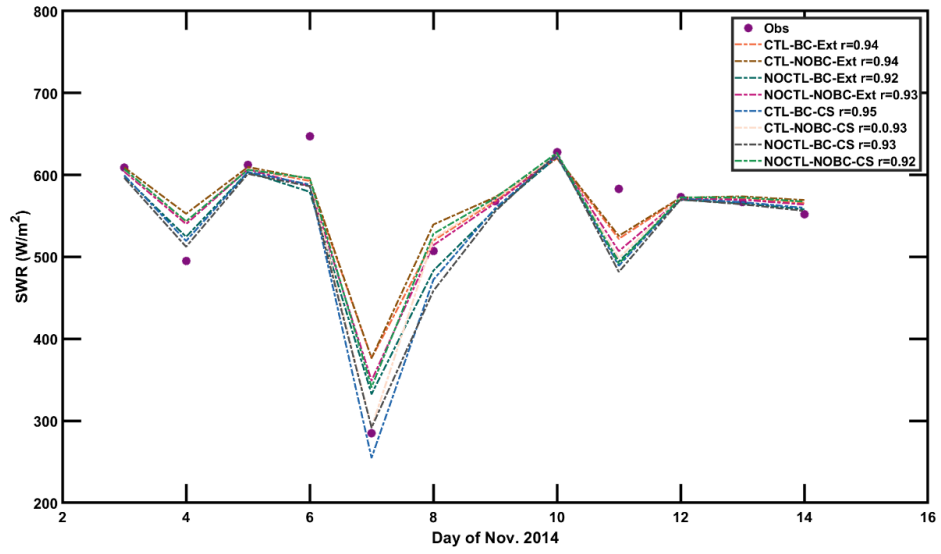


Figure S2. Observed and modelled daily maximum near ground radiation in Beijing during the APEC week.