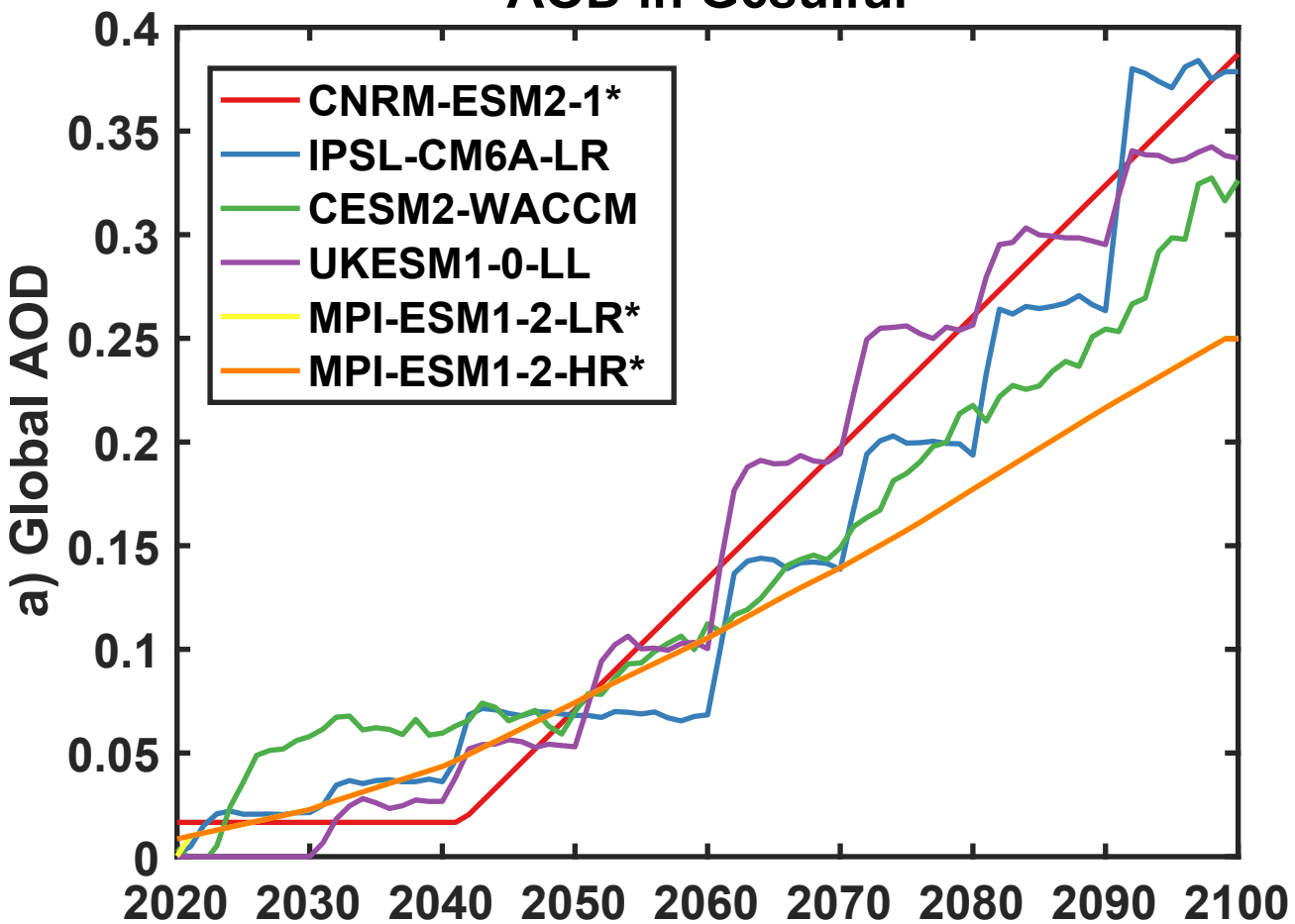
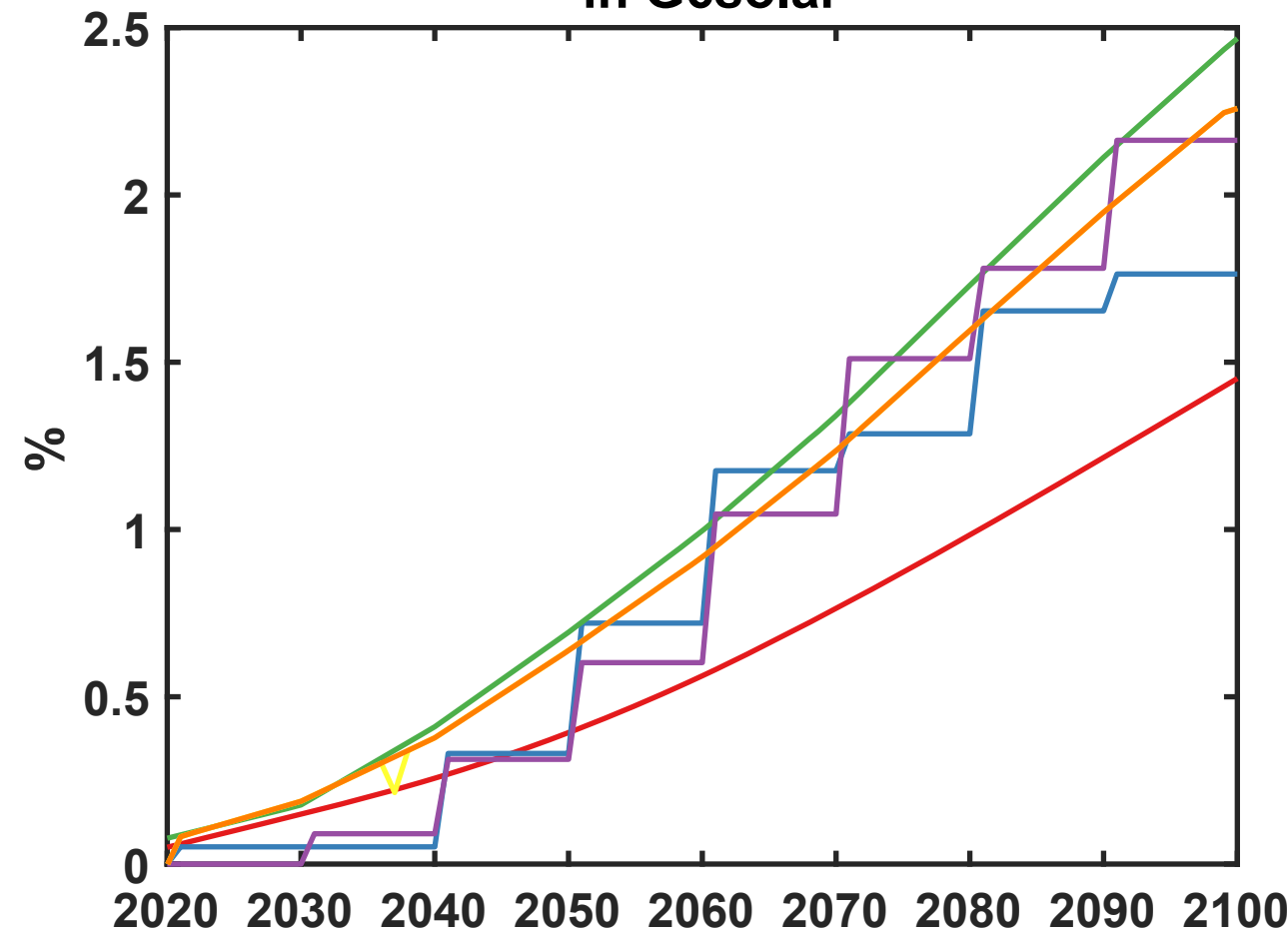


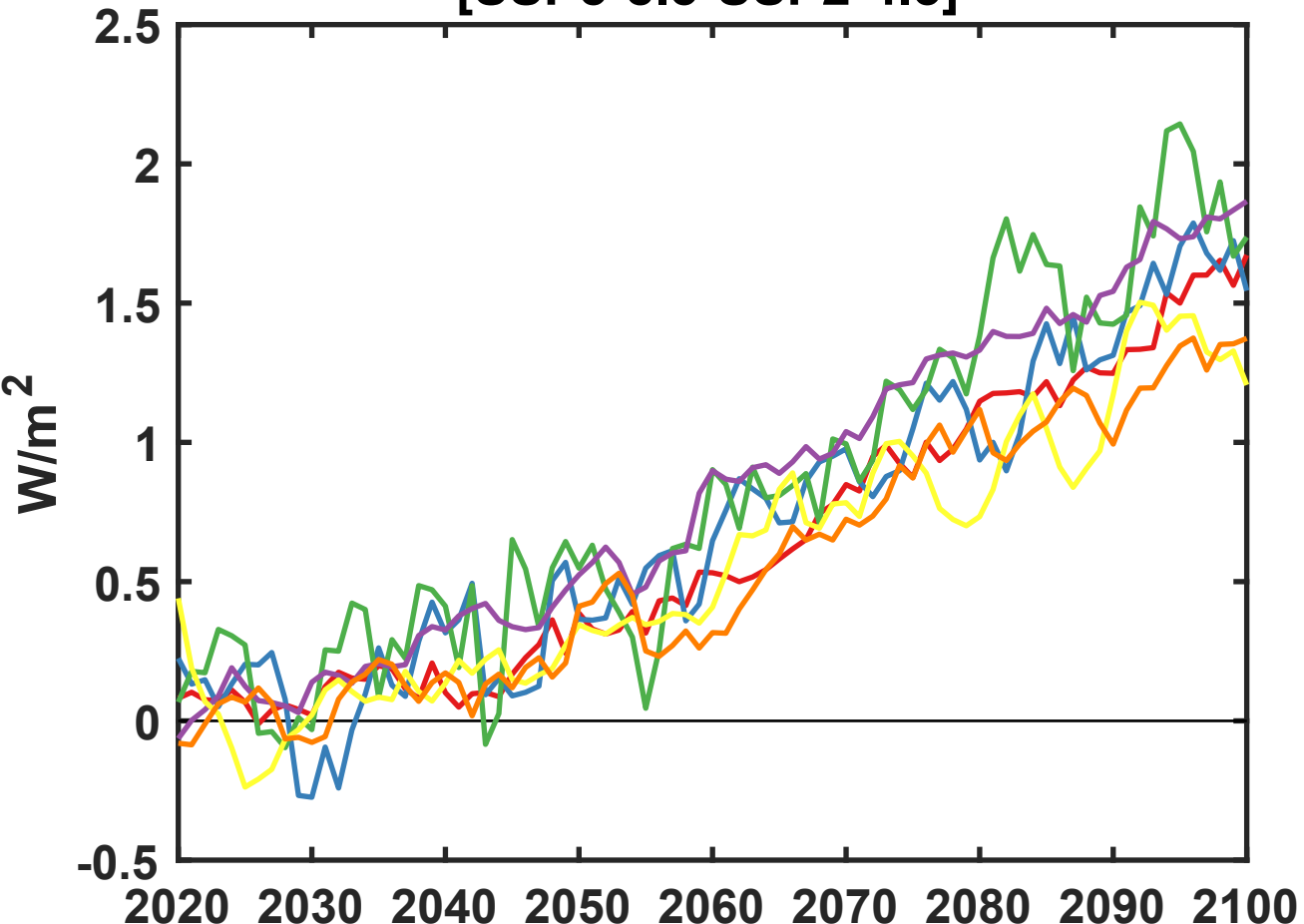
**(a) Globally averaged stratospheric AOD in G6sulfur**



**(b) TOA downwelling solar reduction in G6solar**



**(c) TOA imbalance difference (5y running mean) [SSP5-8.5-SSP2-4.5]**



**(d)  $\Delta$  CO<sub>2</sub> concentration [SSP5-8.5-SSP2-4.5]**

