

Supplement of Atmos. Chem. Phys., 20, 9101–9114, 2020
<https://doi.org/10.5194/acp-20-9101-2020-supplement>
© Author(s) 2020. This work is distributed under
the Creative Commons Attribution 4.0 License.



Supplement of

Contrasting sources and processes of particulate species in haze days with low and high relative humidity in wintertime Beijing

Ru-Jin Huang et al.

Correspondence to: Ru-Jin Huang (rujin.huang@ieecas.cn)

The copyright of individual parts of the supplement might differ from the CC BY 4.0 License.

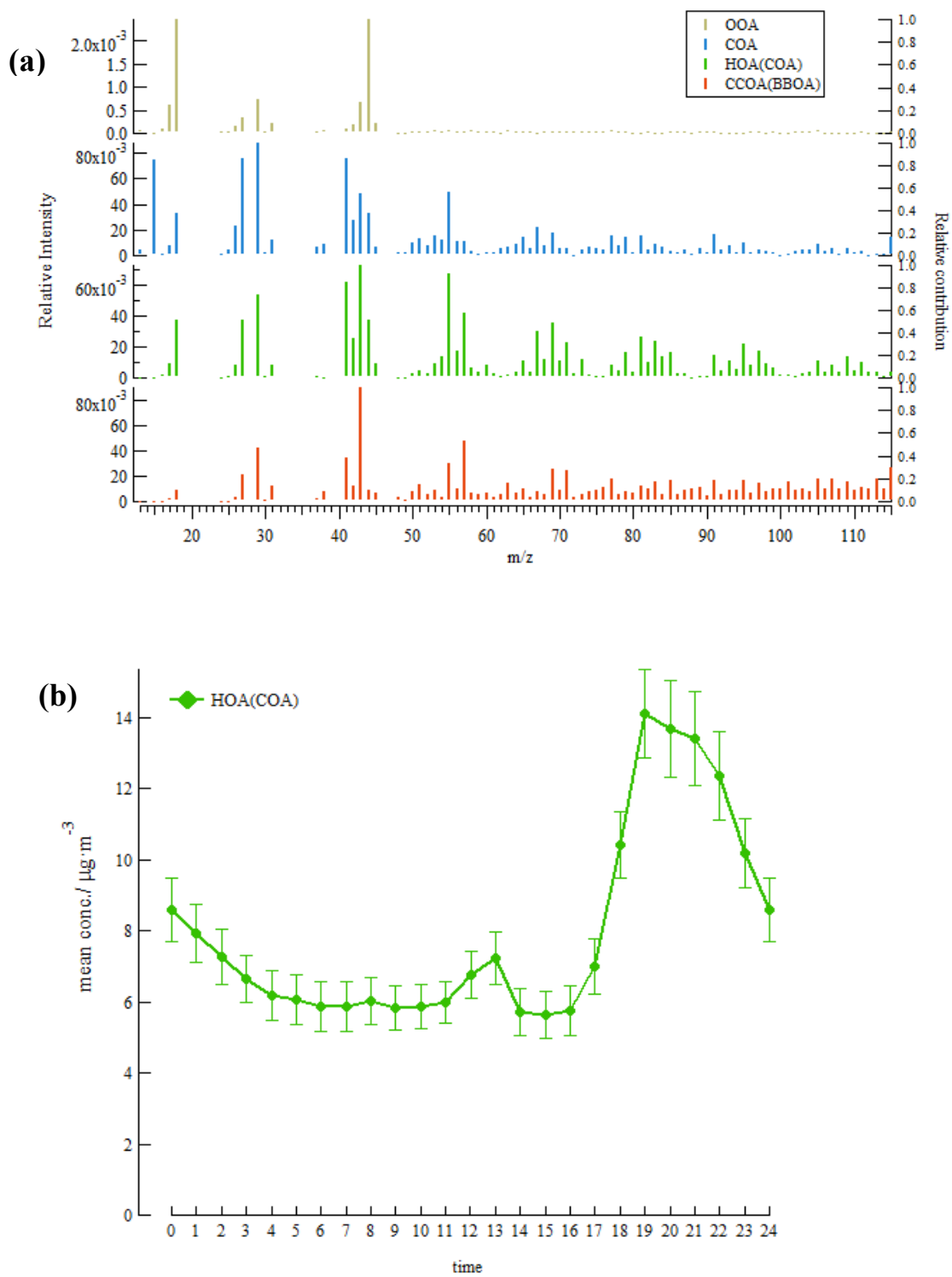


Figure S1. The mass spectra (a) and HOA (COA) diurnal variation (b) for 4-factor solution.

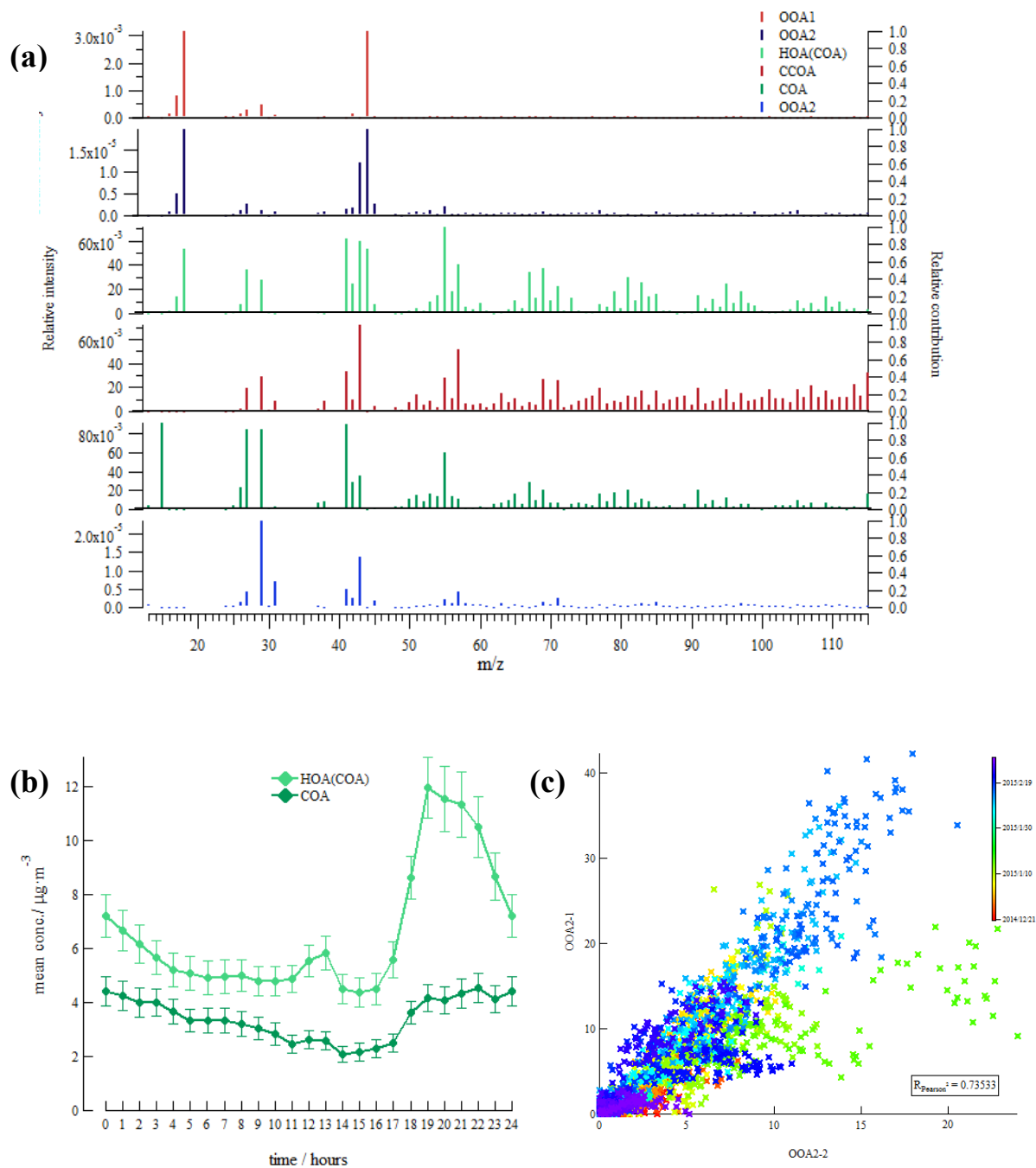


Figure S2. The mass spectra (a), HOA and COA diurnal variations (b), and scatter plot of two OOA2 factors for 6-factor solution.

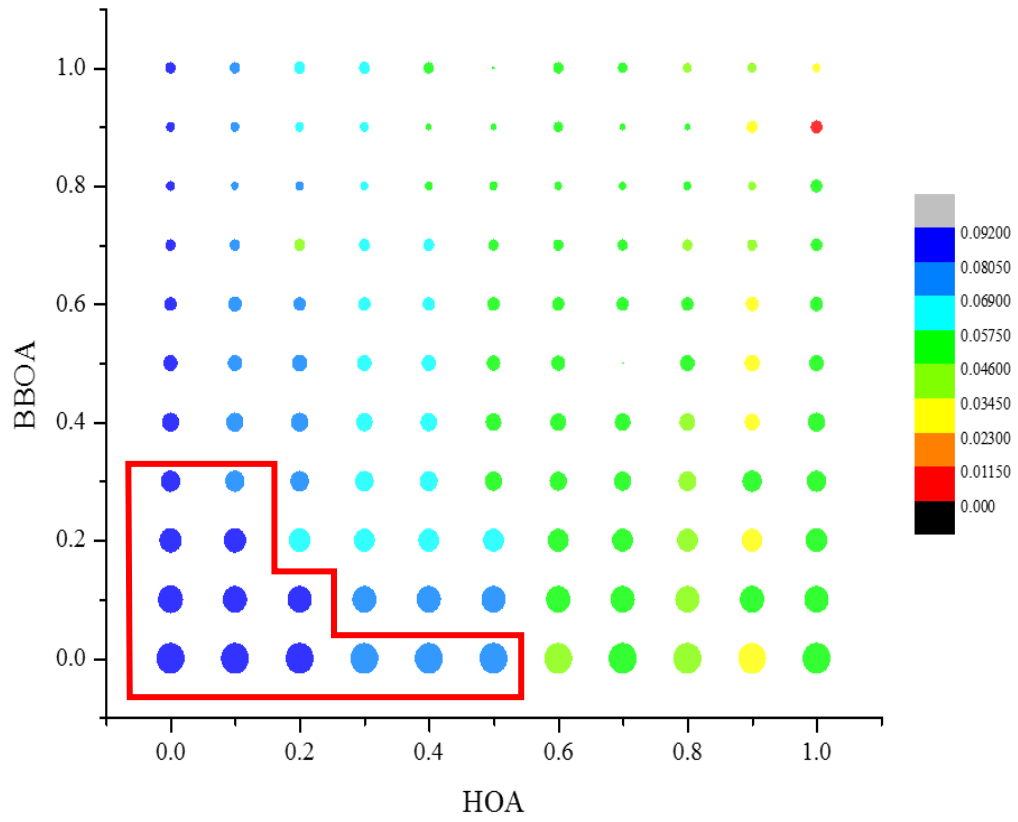


Figure S3. f_{60} of HOA (a, color coded) and f_{57} of BBOA (b, dot size).

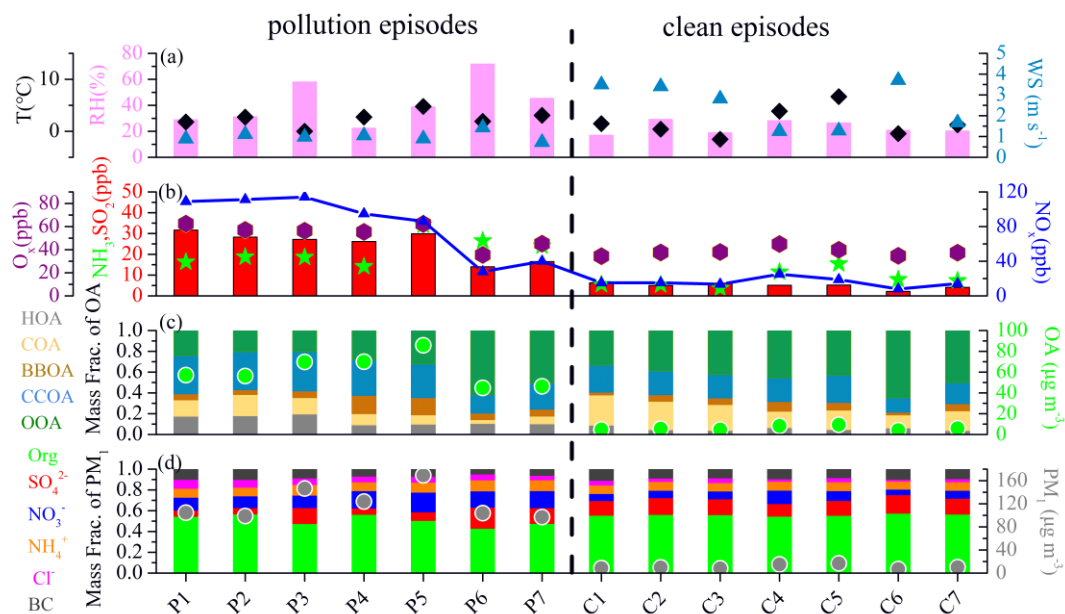


Figure S4. The meteorological parameters (wind speed (WS), temperature (T), and relative humidity (RH)), gas pollutants (O_x, SO₂, NH₃, and NO_x), the fraction contributions and mass concentrations of OA factors and PM₁ components during the pollution (P1-P7) and clean (C1-C7) episodes.