

Supplement of Atmos. Chem. Phys., 20, 6789–6801, 2020
<https://doi.org/10.5194/acp-20-6789-2020-supplement>
© Author(s) 2020. This work is distributed under
the Creative Commons Attribution 4.0 License.



Supplement of

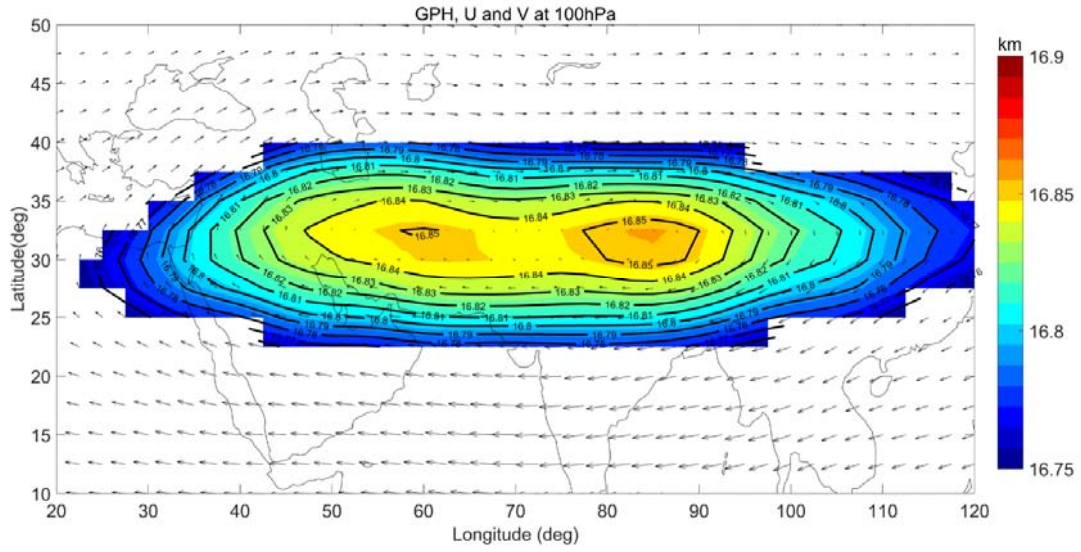
Asian summer monsoon anticyclone: trends and variability

Ghose Basha et al.

Correspondence to: Ghose Basha (mdbasha@narl.gov.in)

The copyright of individual parts of the supplement might differ from the CC BY 4.0 License.

1



2

3 Figure S1. The climatological distribution of GPH and wind vectors averaged during July and
4 August months from NCEP reanalysis data from the year 1951 to 2016.

5

6

7

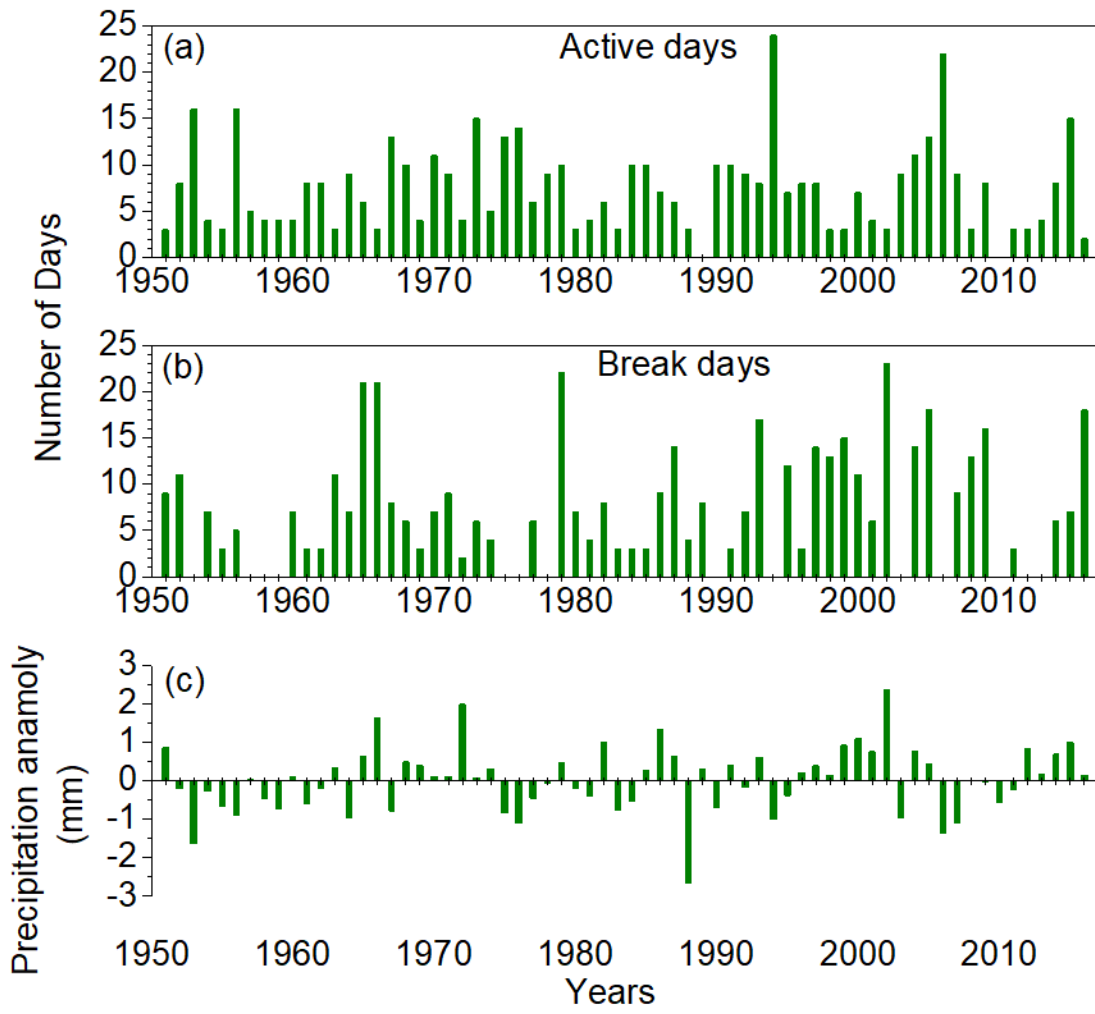
8

9

10

11

12



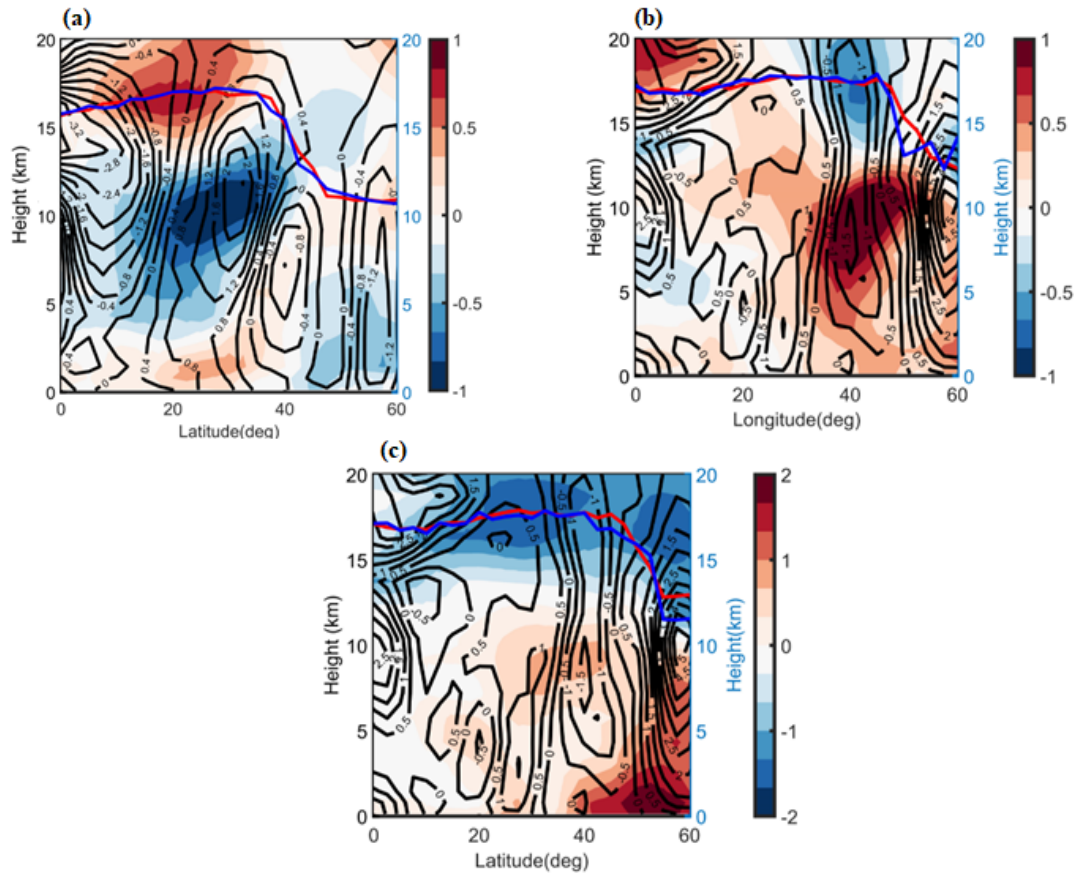
13

14 Figure S2. (a) & (b) Total number of active/break spells for July and August (c) Precipitation
 15 anomalies from 1951-2016. Positive (Negative) values indicate the strong (weak)
 16 monsoon year.

17

18

19



20
 21 Figure S3.Zonal mean cross-section of temperature and zonal wind difference between (a)
 22 Active and break phase of Indian monsoon, (b) strong and weak monsoon years (c) strong
 23 La Niña and El Niño years along with tropopause altitude averaged in the longitude band of
 24 50-60°E.
 25