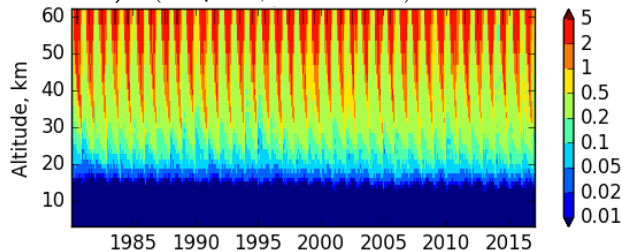
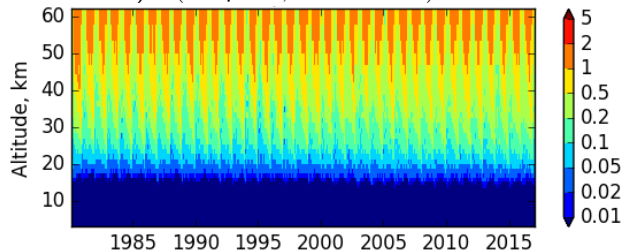
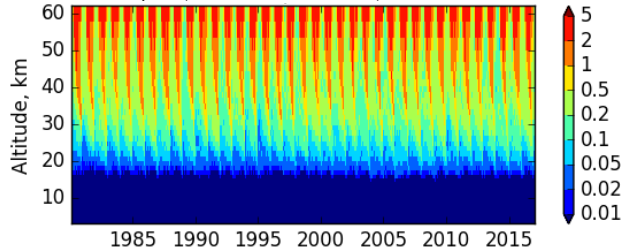
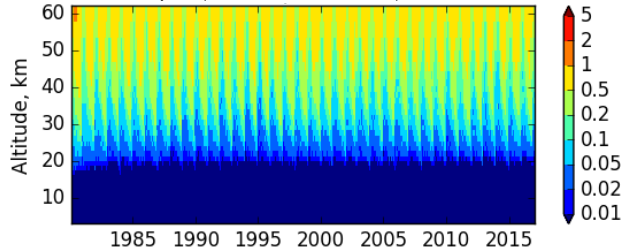
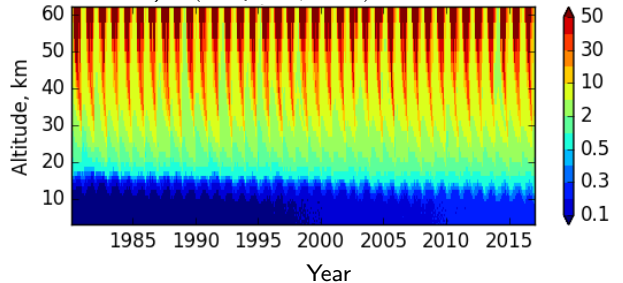


a) Δ ("sf6pass", "sf6nochem"), 0.001 Kz, %b) Δ ("sf6pass", "sf6nochem"), 1 Kz, %c) Δ ("sf6nograv", "sf6"), 0.001 Kz, %d) Δ ("sf6nograv", "sf6"), 1 Kz, %e) Δ ("sf6pass", "sf6"), 0.001 Kz, %f) Δ ("sf6pass", "sf6"), 1 Kz, %