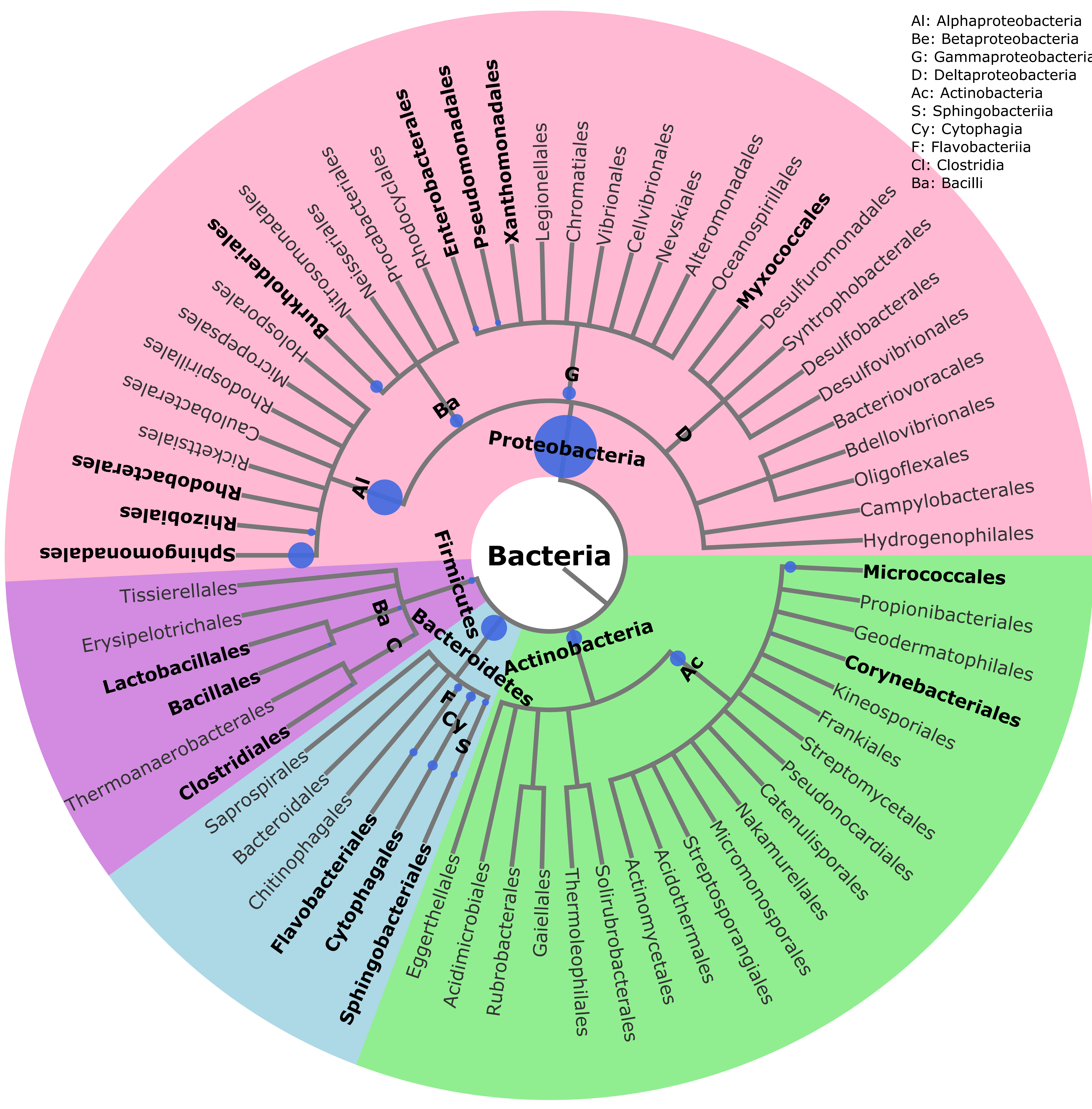


D: Dothideomycetes
S: Sordariomycetes
L: Leotiomyces
E: Eurotiomycetes
P: Pezizomycetes
G: Glomeromycetes
Mi: Microbotryomycetes
T: Tremellomycetes
A: Agaricomycetes
Ma: Malasseziomycetes



AI: Alphaproteobacteria
Be: Betaproteobacteria
G: Gammaproteobacteria
D: Deltaproteobacteria
Ac: Actinobacteria
S: Sphingobacteria
Cy: Cytophagia
F: Flavobacteria
Cl: Clostridia
Ba: Bacilli