

Supplement of Atmos. Chem. Phys., 20, 2319–2339, 2020
<https://doi.org/10.5194/acp-20-2319-2020-supplement>
© Author(s) 2020. This work is distributed under
the Creative Commons Attribution 4.0 License.



Supplement of

Evaluation of NU-WRF model performance on air quality simulation under various model resolutions – an investigation within the framework of MICS-Asia Phase III

Zhining Tao et al.

Correspondence to: Zhining Tao (zhining.tao@nasa.gov)

The copyright of individual parts of the supplement might differ from the CC BY 4.0 License.

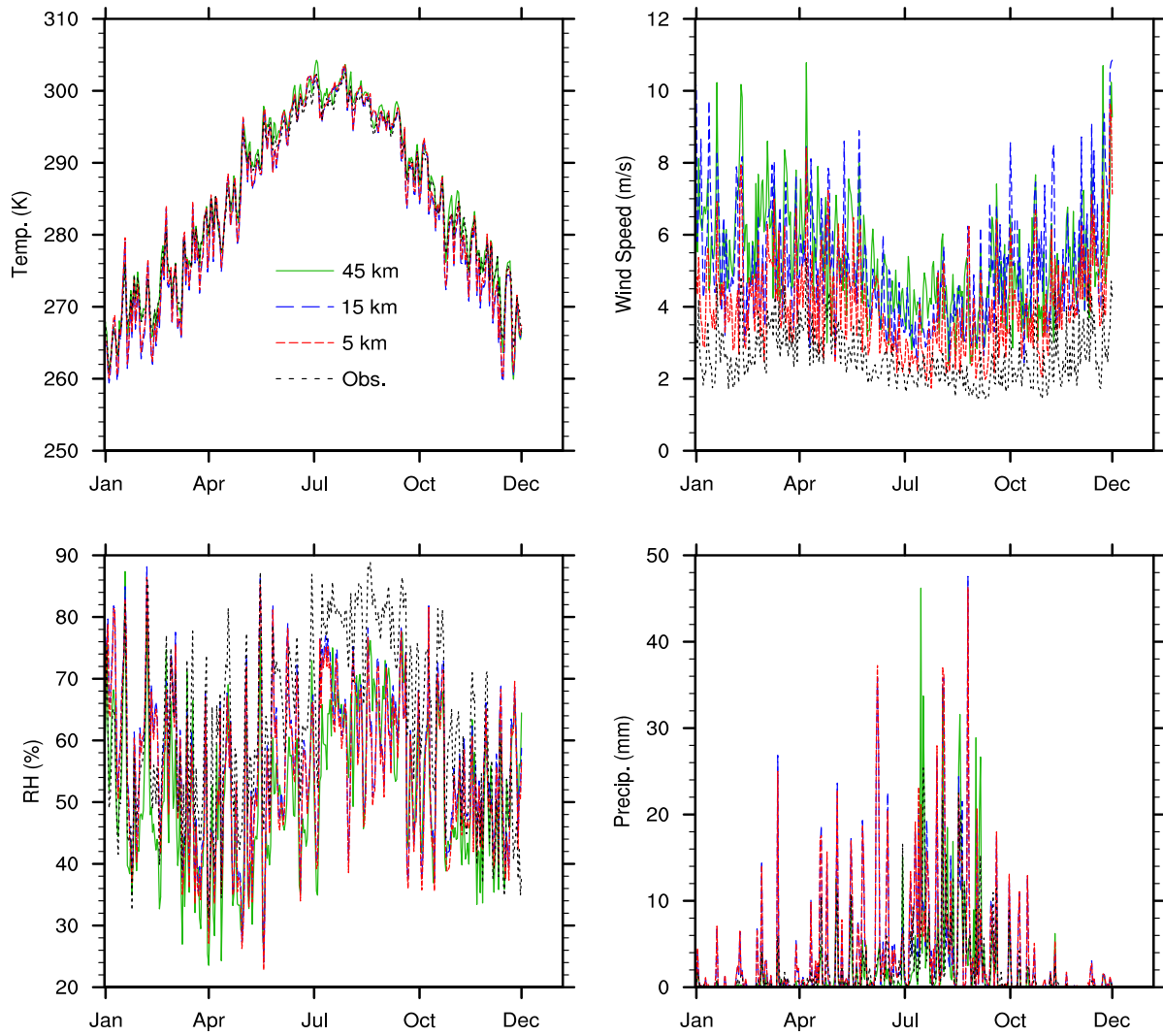


Figure S1. Time series of surface meteorological parameters of observed vs. modeled values at different grid resolutions in areas where the monitoring sites are located

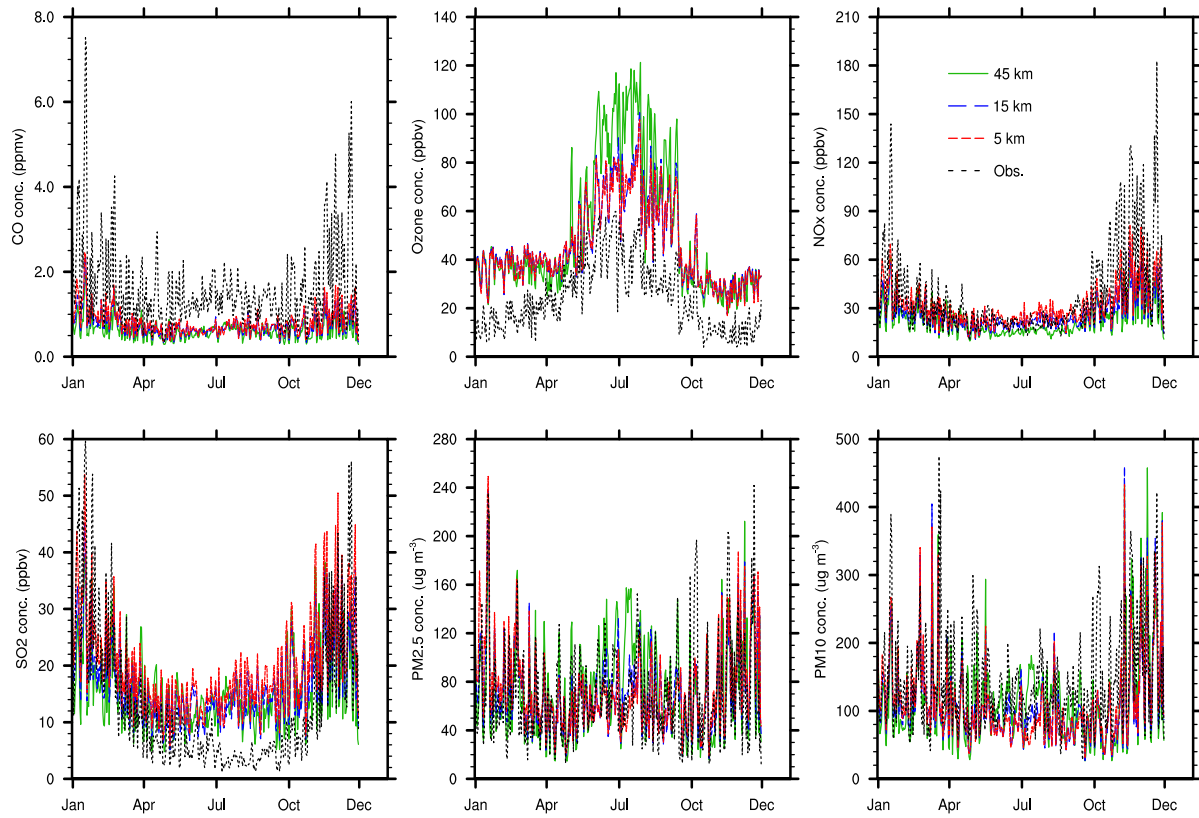


Figure S2. Time series of surface air quality of observed vs. modeled values at different grid resolutions in areas where the monitoring sites are located

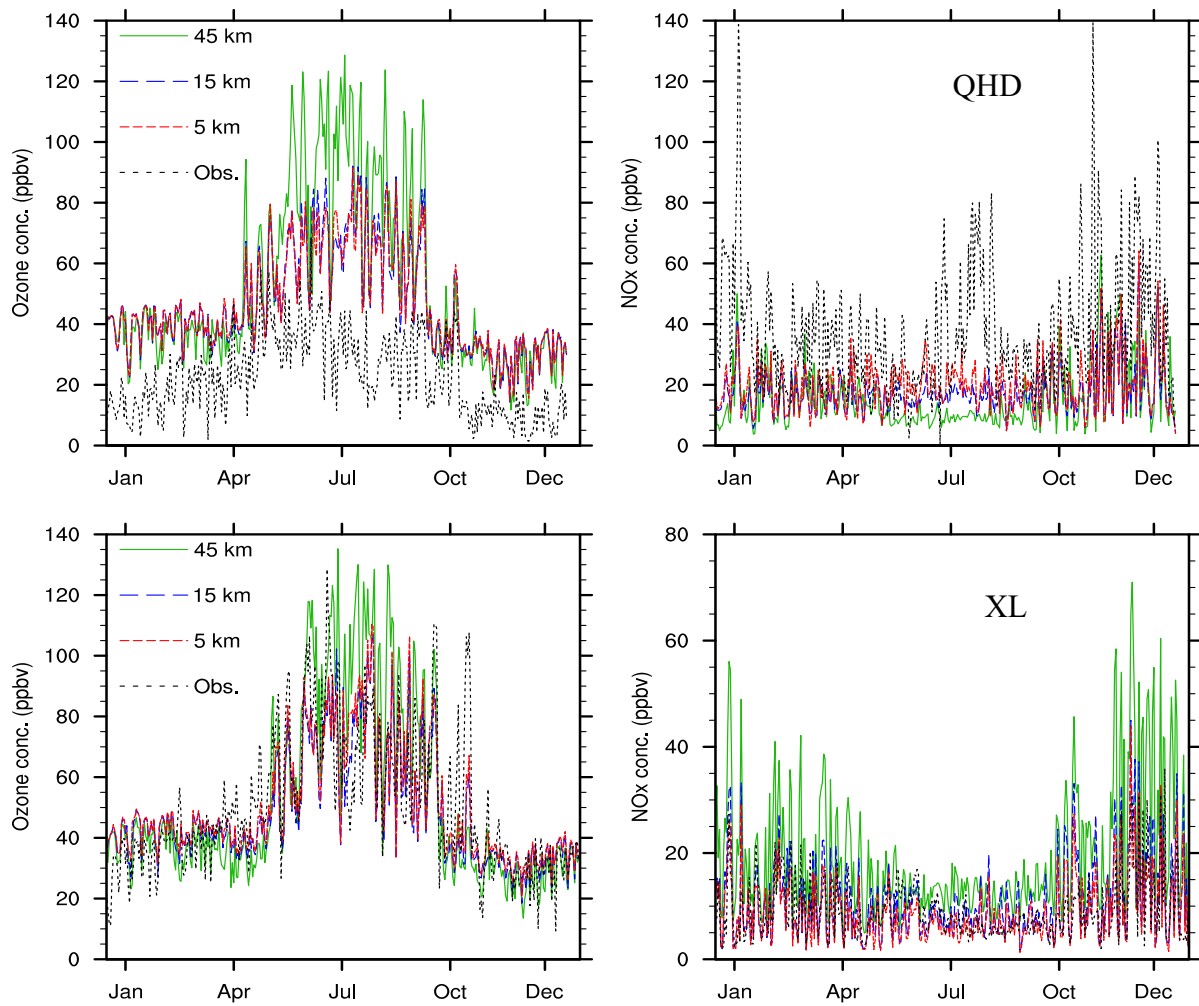


Figure S3. Time series of surface O₃ and NO_x concentrations over QHD (upper) and XL (lower) sites of observed vs. modeled values at different grid resolutions

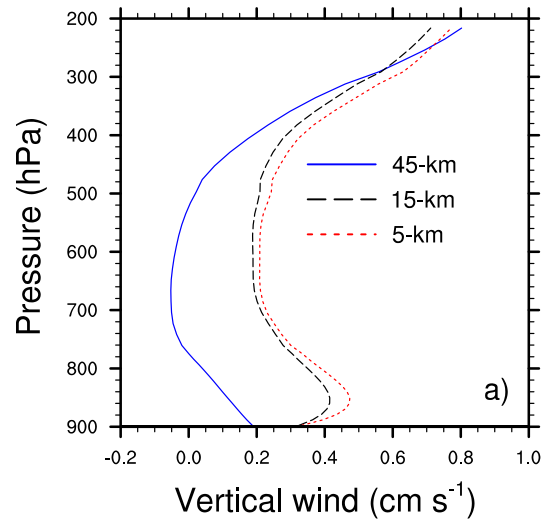


Figure S4. Domain average vertical wind speeds at different grid resolutions along the altitude