

Supplement of Atmos. Chem. Phys., 20, 14253–14271, 2020
<https://doi.org/10.5194/acp-20-14253-2020-supplement>
© Author(s) 2020. This work is distributed under
the Creative Commons Attribution 4.0 License.



Supplement of

New particle formation at urban and high-altitude remote sites in the south-eastern Iberian Peninsula

Juan Andrés Casquero-Vera et al.

Correspondence to: Juan Andrés Casquero Vera (casquero@ugr.es)

The copyright of individual parts of the supplement might differ from the CC BY 4.0 License.

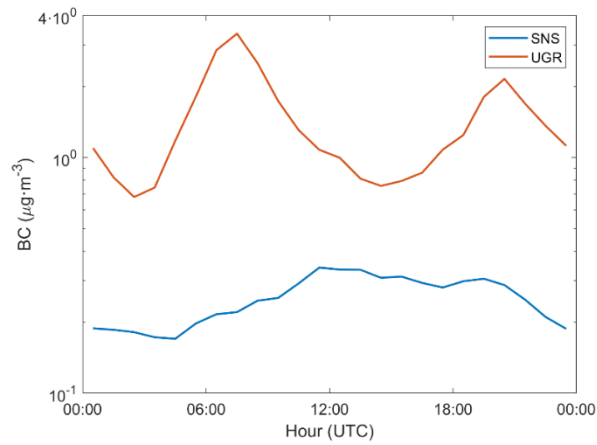
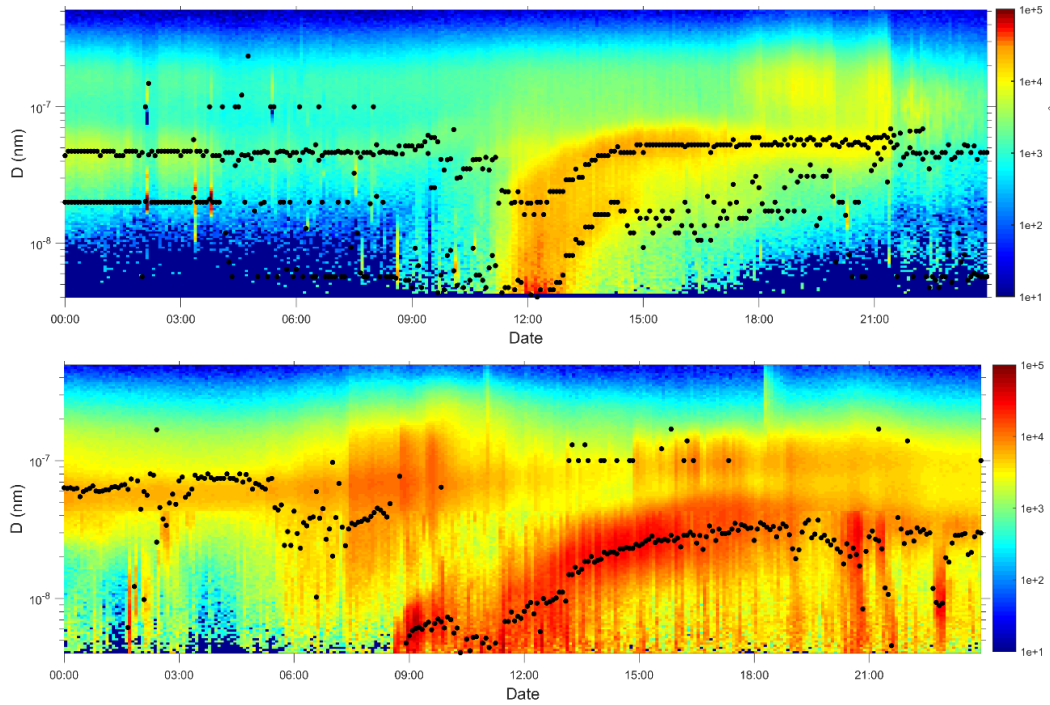


Figure S1. Mean diurnal variation of BC concentration ($\mu\text{g m}^{-3}$) at SNS and UGR for the whole analysed campaign period.



5

Figure S2. An example illustrating a case where (top) two aerosol modes appears at same time at SNS site and (bottom) local and regional event take place at UGR site.

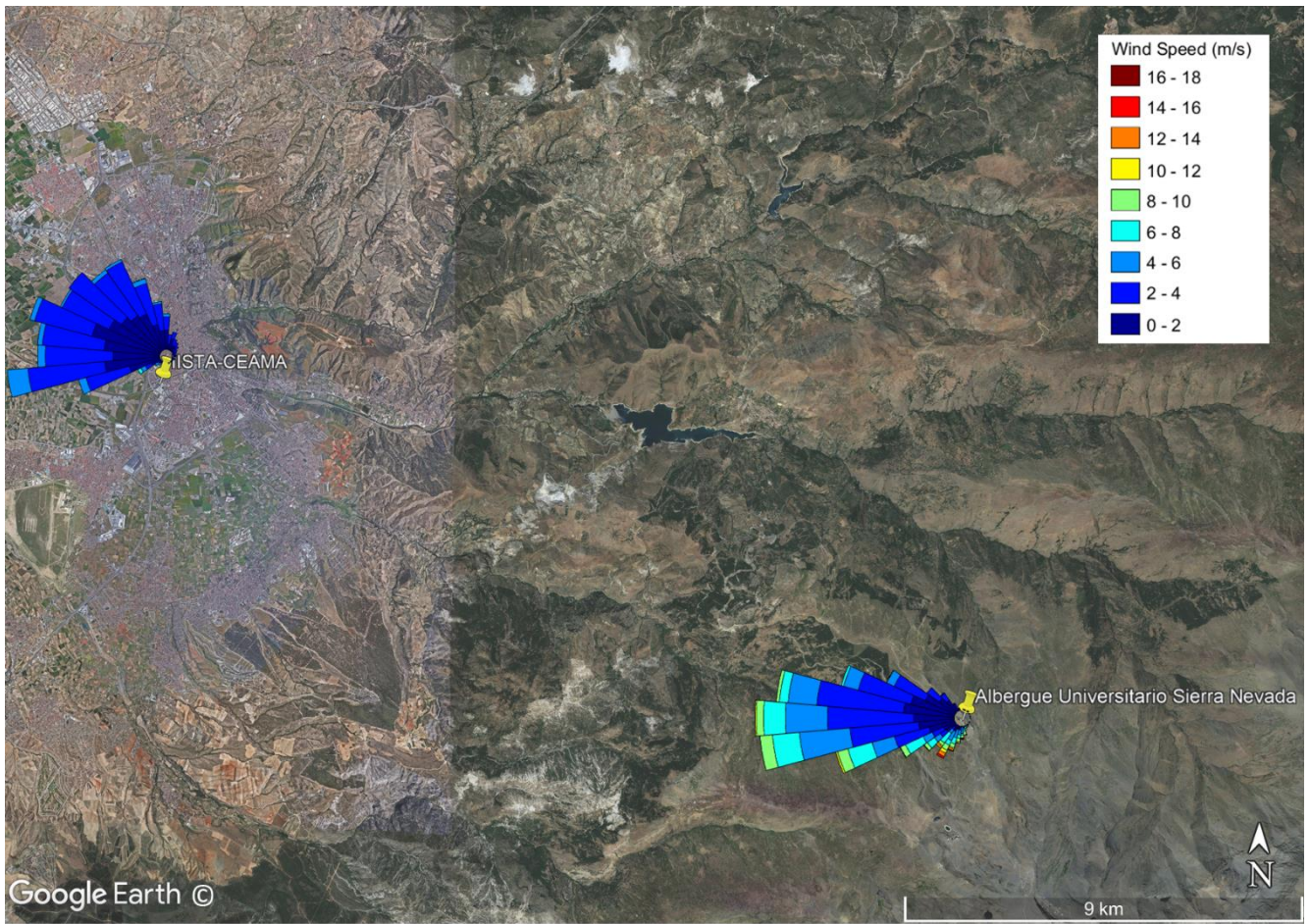


Figure S3. Mean wind roses at SNS and UGR stations during the NPF event hours (from 10:00-15:00 during event days).

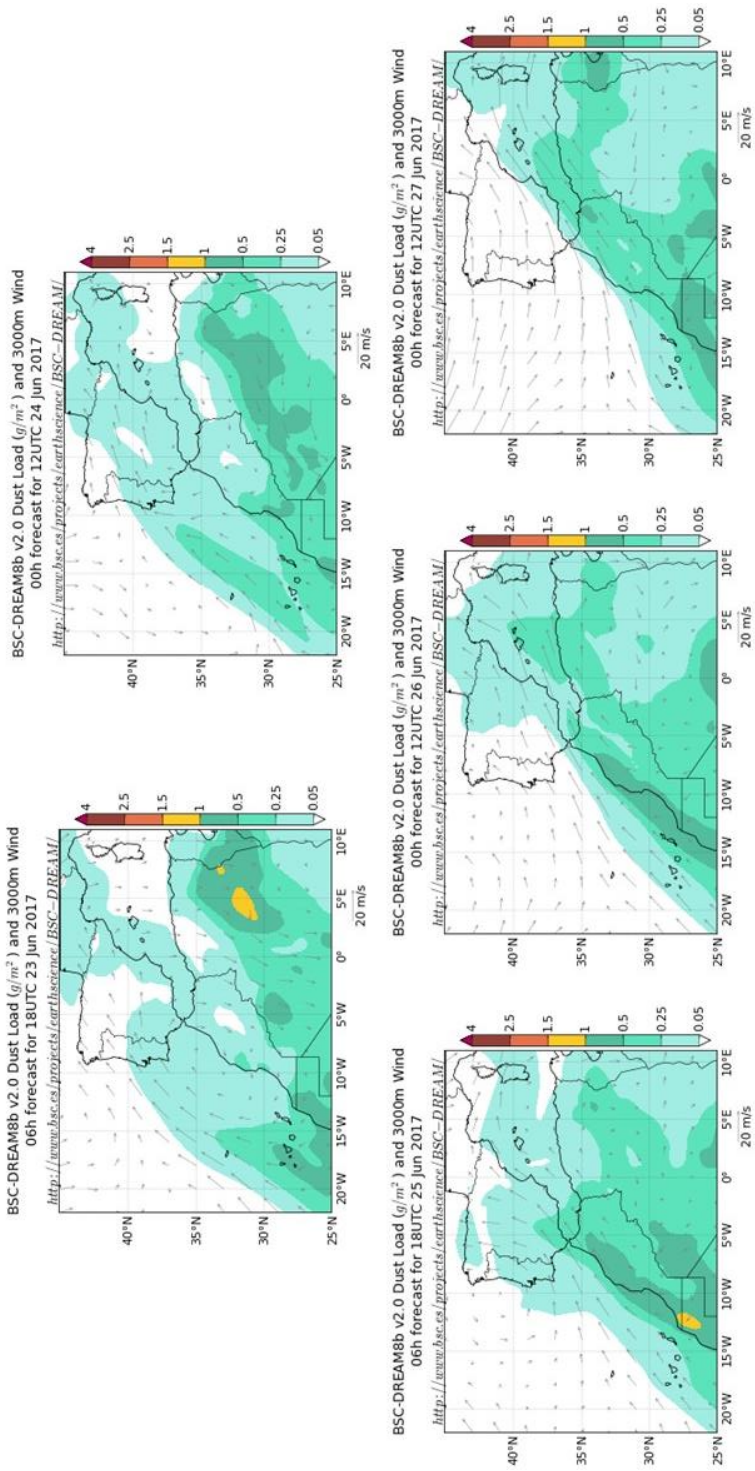


Figure S4. Evolution of modelled dust load ($g \cdot m^{-2}$) for the period 23 to 27 June 2017.