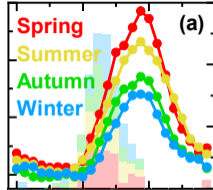


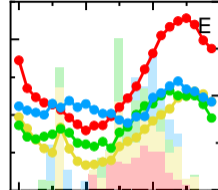
MLH (m)



+ R X U

Growth rate (m h^{-1})

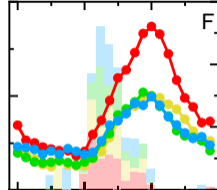
WS_{ML} (m s^{-1})



+ R X U

Growth rate ($\text{m s}^{-1}\text{h}^{-1}$)

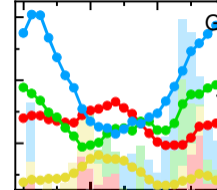
VC ($\text{m}^2 \text{s}^{-1}$)



+ R X U

Growth rate ($\text{m}^2 \text{s}^{-1}\text{h}^{-1}$)

$PM_{2.5}$ ($\mu\text{g m}^{-3}$)



+ R X U

Growth rate ($\mu\text{g m}^{-3} \text{h}^{-1}$)