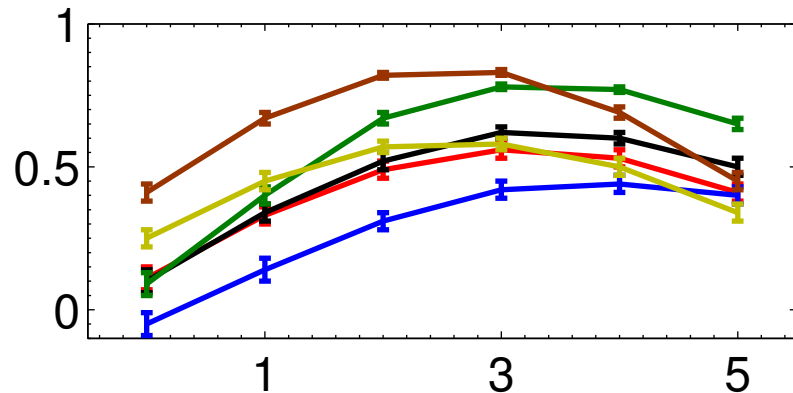
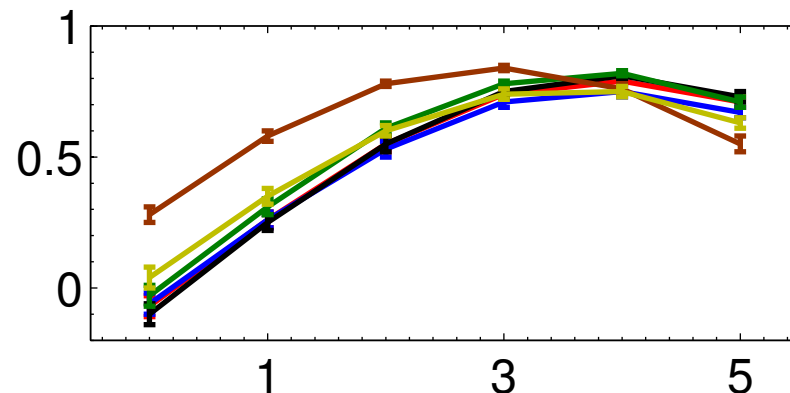


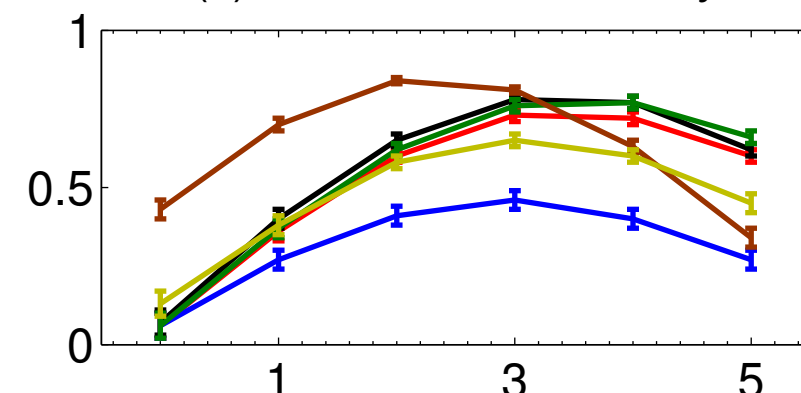
(a) May: entire day



(b) October: entire day

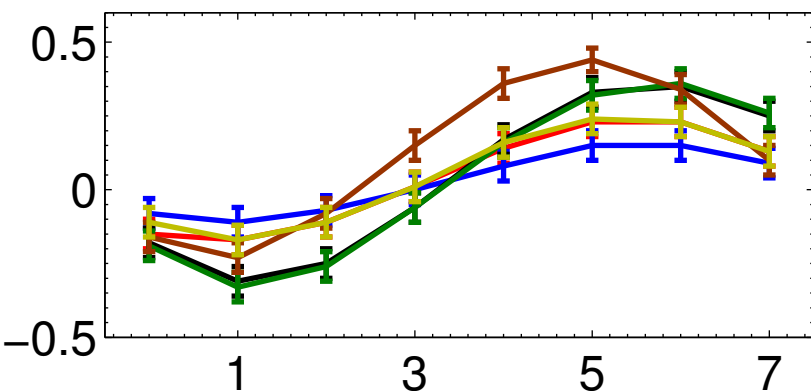


(c) December: entire day

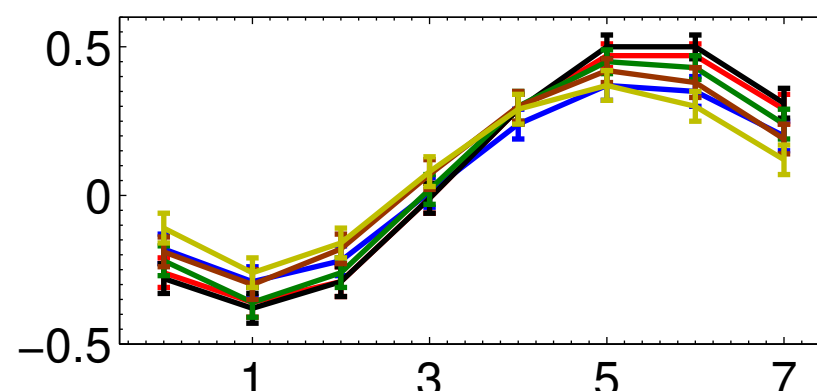


— GP1 — GP2 — Delhi — CI — SI — Bengal

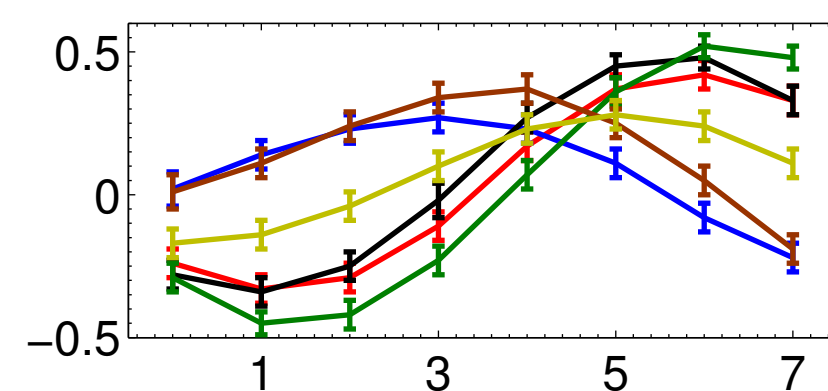
(d) May: morning–afternoon hours



(e) October: morning–afternoon hours



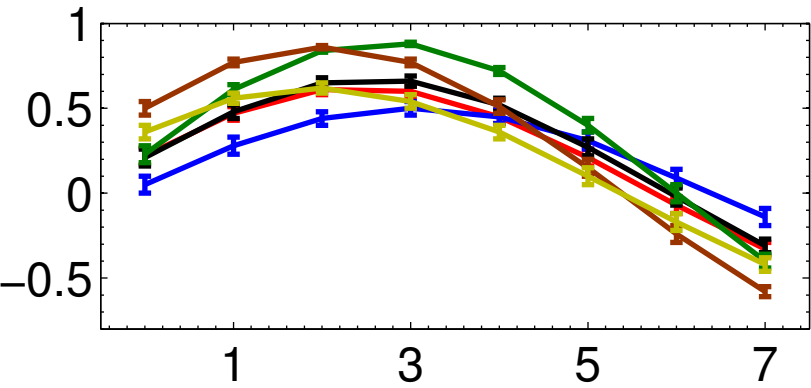
(f) December: morning–afternoon hours



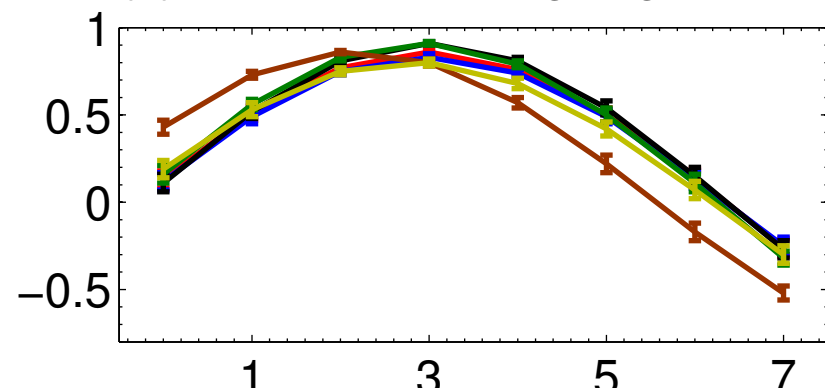
x-axis: lead-hour between emission cycle and ΔBC

y-axis: correlation coefficient between emission cycle and ΔBC

(g) May: evening–night hours



(h) October: evening–night hours



(i) December: evening–night hours

