

Supplement of Atmos. Chem. Phys., 19, 7743–7757, 2019
<https://doi.org/10.5194/acp-19-7743-2019-supplement>
© Author(s) 2019. This work is distributed under
the Creative Commons Attribution 4.0 License.



Supplement of

Climate impact of Finnish air pollutants and greenhouse gases using multiple emission metrics

Kaarle Juhana Kupiainen et al.

Correspondence to: Kaarle Juhana Kupiainen (kaarle.kupiainen@ym.fi, kaarle.kupiainen@ymparisto.fi)

The copyright of individual parts of the supplement might differ from the CC BY 4.0 License.

Supporting Information

Table S1. Emissions in 2000, 2010 and 2030 from sectors energy and industry (ENE IND), industrial processes (PROC), transport road (TRA RD), off-road transport and machinery (TRA OT), domestic (DOM), waste (WST), agriculture (AGR), and other (OTHER). Unit: Gg a⁻¹

Pollutant	Year	DOM	ENE_IN	PROC	TRA_RD	TRA_OT	WST	AGR	OTHER
BC	2000	2.7	0.2	0.1	2.0	1.8	0.0	0.0	0.0
BC	2010	3.7	0.1	0.1	1.6	1.1	0.0	0.0	0.0
BC	2030	2.7	0.0	0.1	0.2	0.2	0.0	0.0	0.0
OC	2000	2.5	0.1	0.2	1.5	1.1	0.0	0.0	0.1
OC	2010	3.4	0.1	0.2	1.2	0.7	0.0	0.0	0.1
OC	2030	2.3	0.1	0.2	0.7	0.2	0.0	0.0	0.0
CO	2000	147.0	80.2	45.0	390.2	87.0	4.2	0.6	0.0
CO	2010	209.0	66.9	32.0	134.2	57.2	4.3	0.2	0.0
CO	2030	154.8	76.3	35.3	45.7	68.3	4.4	0.2	0.0
NO _x	2000	11.0	62.0	2.3	85.9	51.7	0.0	0.0	0.0
NO _x	2010	13.0	69.7	7.4	53.3	34.5	0.0	0.0	0.0
NO _x	2030	10.3	49.1	9.2	12.8	18.6	0.0	0.0	0.0
VOC	2000	14.3	0.5	11.7	45.3	28.3	2.0	0.0	59.3
VOC	2010	19.2	2.2	8.5	18.5	17.2	0.6	0.0	35.2
VOC	2030	13.1	2.0	7.4	3.2	4.9	0.4	0.0	27.6
SO ₂	2000	3.9	52.5	17.7	0.1	2.6	0.0	0.0	0.0
SO ₂	2010	3.4	42.9	14.7	1.0	1.0	0.0	0.0	0.0
SO ₂	2030	2.3	16.6	17.0	0.1	0.4	0.0	0.0	0.0
NH ₃	2000	0.0	0.9	1.1	2.4	0.0	0.1	32.9	0.2
NH ₃	2010	0.0	0.9	0.6	1.6	0.0	0.1	35.0	0.2
NH ₃	2030	0.0	1.0	0.5	1.3	0.0	0.1	32.0	0.2
CH ₄	2000	6.0	0.0	0.5	0.0	0.0	154.6	92.5	0.0
CH ₄	2010	8.2	0.0	0.4	0.0	0.0	96.5	90.1	0.0
CH ₄	2030	6.7	0.0	0.4	0.0	0.0	55.0	90.1	0.0
CO ₂	2000	4467	31600	3600	10990	3143	0	0	170
CO ₂	2010	3572	38540	4400	11988	3005	0	0	150

CO ₂	2030	1852	20636	4400	8948	3299	0	0	150
N ₂ O	2000	0.1	0.1	4.4	0.0	0.0	0.5	10.6	2.0
N ₂ O	2010	0.2	0.1	0.5	0.0	0.0	0.5	10.9	2.0
N ₂ O	2030	0.1	0.1	0.5	0.0	0.0	0.5	10.9	2.0

5

Table S2: Mean(RTP(1-25yrs)) values (°C/Tg) for SLCF and GHG emissions. The normalized values of Table 3. The Arctic response for the GHGs is based on the latitudinal pattern for CH₄. The annual average is based on emissions in 2010.

	Mean(1-25yrs), global response			Mean(1-25yrs), Arctic response		
	Annual average	Summer	Winter	Annual average	Summer	Winter
CO ₂ [CO ₂]	1	1	1	1	1	1
CH ₄ [CH ₄]	84	84	84	84	84	84
N ₂ O [N ₂ O]	262	262	262	262	262	262
NO _x [NO ₂]	-30	-41	-19	-23	-33	-14
VOC [VOC]	17	24	11	19	19	19
CO [CO]	7	7	8	6	6	7
BC [C]	4770	2710	6030	26700	12300	35500
OC [C]	-824	-1170	-619	-2290	-3360	-1660
SO ₂ [SO ₂]	-394	-618	-181	-1040	-1650	-457
NH ₃ [NH ₃]	-74	-90	-58	-176	-214	-137

10

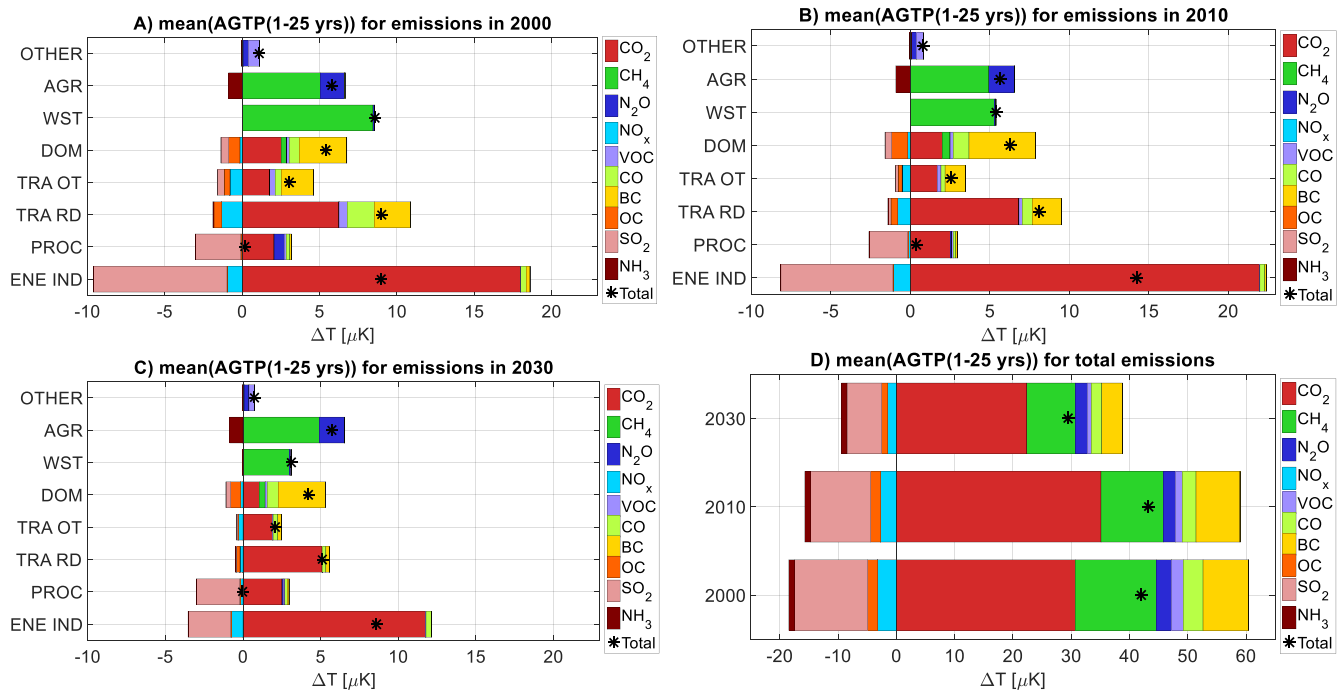
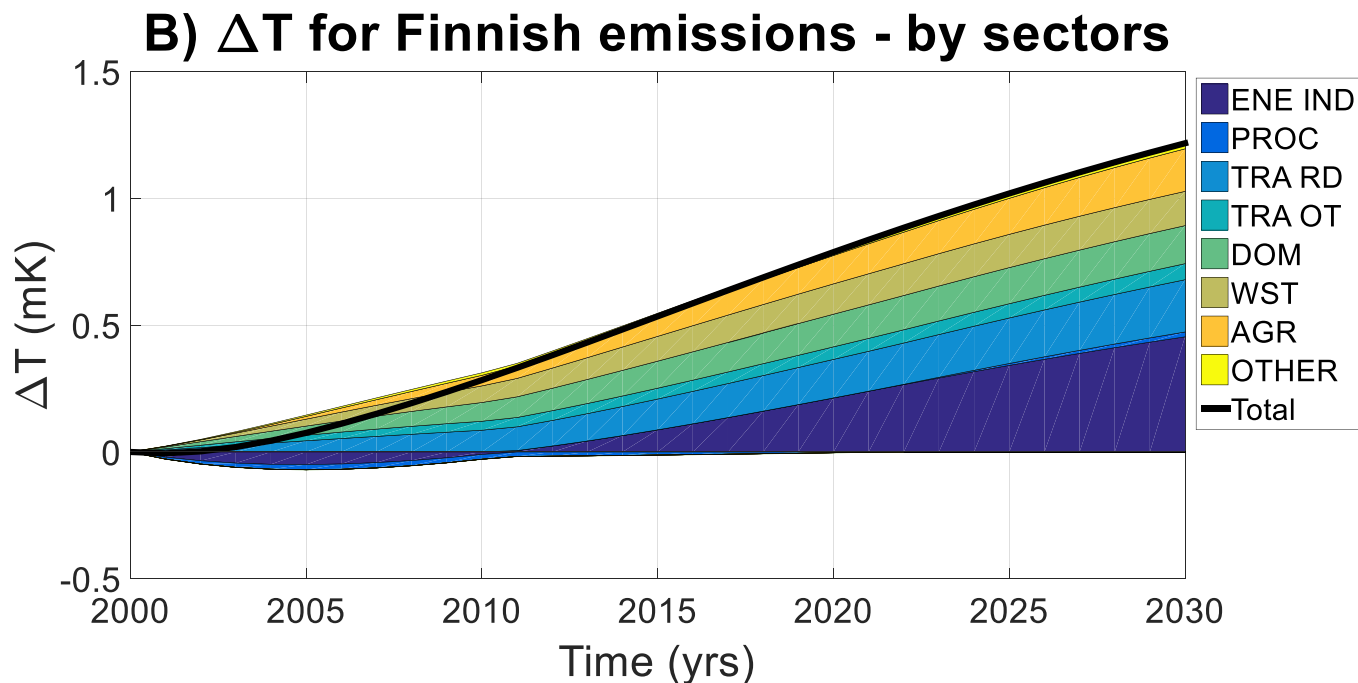
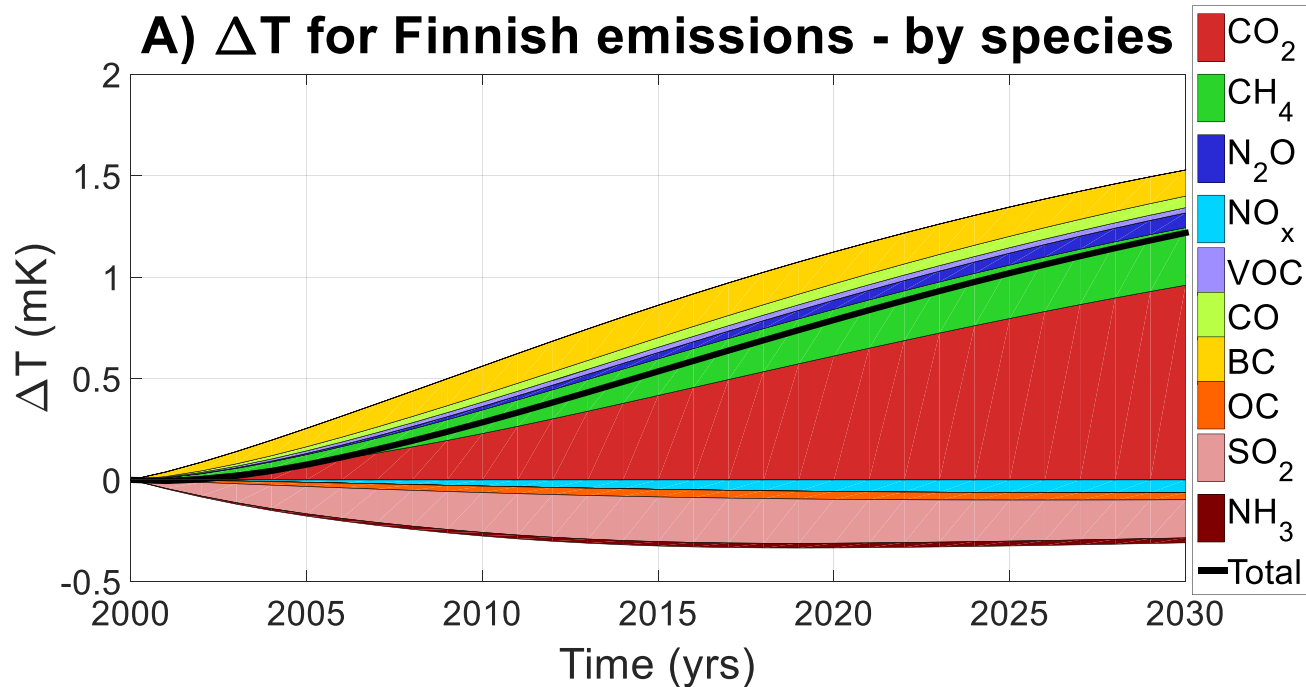


Figure S1: The same as Figure 3, but based on AGTPs in Aamaas et al. (2016), and not ARTPs. The temperature response (μK) due to emissions in 2000 (A), 2010 (B), and 2030 (C) from sectors energy and industry (ENE IND), industrial processes (PROC), transport road (TRA RD), off-road transport and machinery (TRA OT), domestic (DOM), waste (WST), agriculture (AGR), and other (OTHER). The sum of all sectors is shown in (D). The climate metric applied is mean(AGTP(1-25 yrs)) for pulse emissions.

15



20 Figure S2: The same as Figure 4, but based on AGTPs in Aamaas et al. (2016), and not ARTPs. The global temperature development (mK) of Finnish emissions for the period 2000-2030. Temperature is given by pollutants in (A) and by sectors in (B).