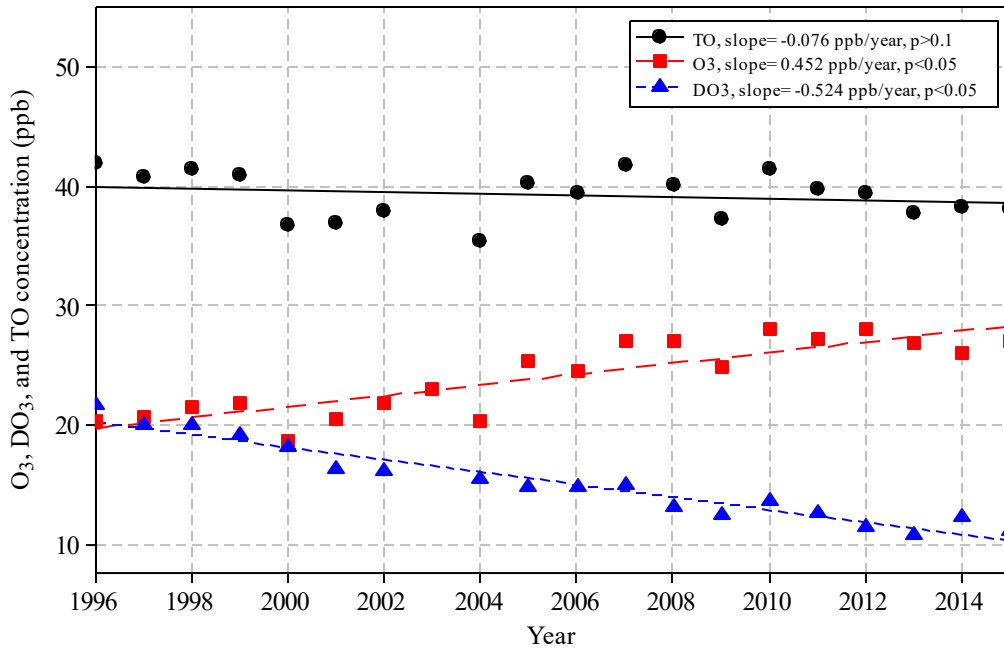


(a) Long-term trends of O₃, DO₃, and TO at Windsor 1996–2015



(b) Long-term trends of NO_x, NMHC, and OFP at Windsor 1996–2015

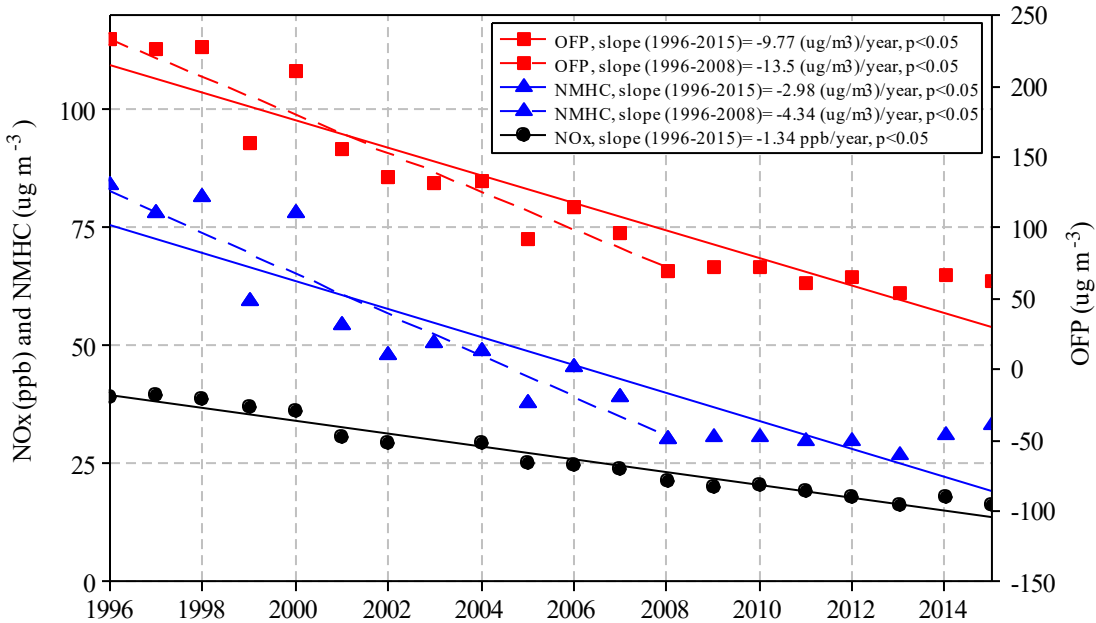


Figure 4. Annual mean concentrations for (a) O₃, DO₃, and TO, and (b) NO_x, NMHC, and ozone formation potential (OFP) in Windsor during 1996-2015.