

Supplement of Atmos. Chem. Phys., 19, 6717–6736, 2019  
<https://doi.org/10.5194/acp-19-6717-2019-supplement>  
© Author(s) 2019. This work is distributed under  
the Creative Commons Attribution 4.0 License.



*Supplement of*

## **Primary and secondary sources of ambient formaldehyde in the Yangtze River Delta based on Ozone Mapping and Profiler Suite (OMPS) observations**

**Wenjing Su et al.**

*Correspondence to:* Cheng Liu (chliu81@ustc.edu.cn) and Qihou Hu (qhhu@aiofm.ac.cn)

The copyright of individual parts of the supplement might differ from the CC BY 4.0 License.

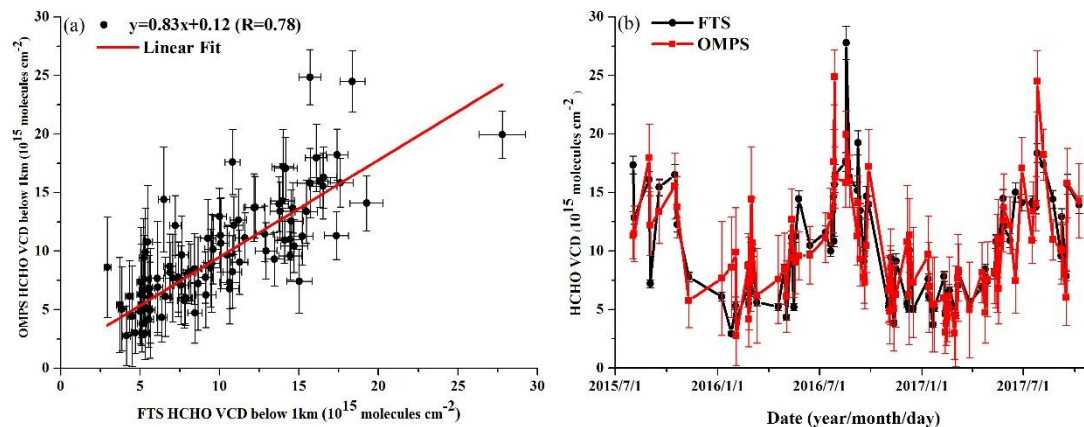


Figure S1. (a) Correlation analysis and (b) time series of tropospheric HCHO VCDs measured by OMPS and HCHO Column below 1km measured by FTS from Jul.1<sup>st</sup>, 2015 to Nov.20<sup>th</sup>, 2017.

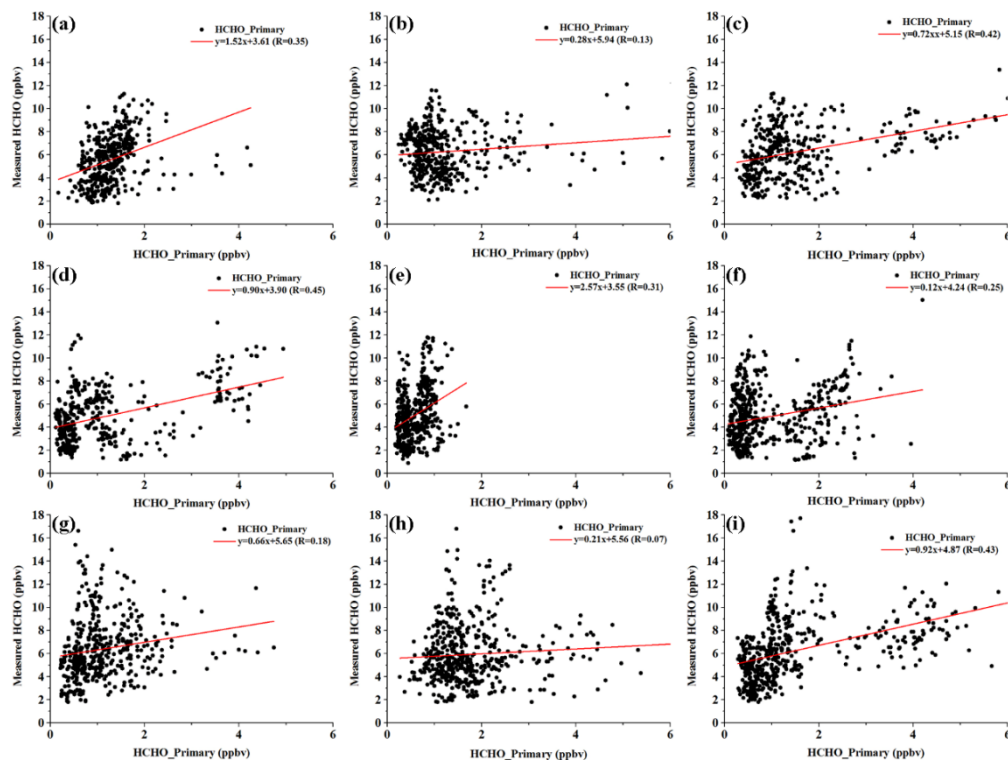


Figure S2. Correlation analysis of total HCHO and primary HCHO from 2015 to 2017 at RJR site (a), MGQ site (b), and XLUT site (c) in Nanjing, at XS site (d), CXT site (e), and FDCH site (f) in Hangzhou, and at HK site (g), PDNA site (h), and DSL site (i) in Shanghai.

**Table S1. Correlation coefficients of the regression analysis using different data transformations.**

	R <sup>2</sup> (RJJ, Nanjing)	R <sup>2</sup> (CXT, Hangzhou)	R <sup>2</sup> (PDNA, Shanghai)
Linear	0.64	0.59	0.55
ln	0.54	0.51	0.49
Sqrt	0.60	0.57	0.48
1/sqrt(x)	0.46	0.40	0.47
x <sup>2</sup>	0.64	0.59	0.40
x <sup>3</sup>	0.54	0.54	0.31
1/x	0.37	0.28	0.44
1/ln(x)	0.29	0.02	0.46
1/x <sup>2</sup>	0.22	0.12	0.38
1/x <sup>3</sup>	0.10	0.05	0.29