



Supplement of

Characteristics of atmospheric mercury in a suburban area of east China: sources, formation mechanisms, and regional transport

Xiaofei Qin et al.

Correspondence to: Kan Huang (huangkan@fudan.edu.cn) and Congrui Deng (congruideng@fudan.edu.cn)

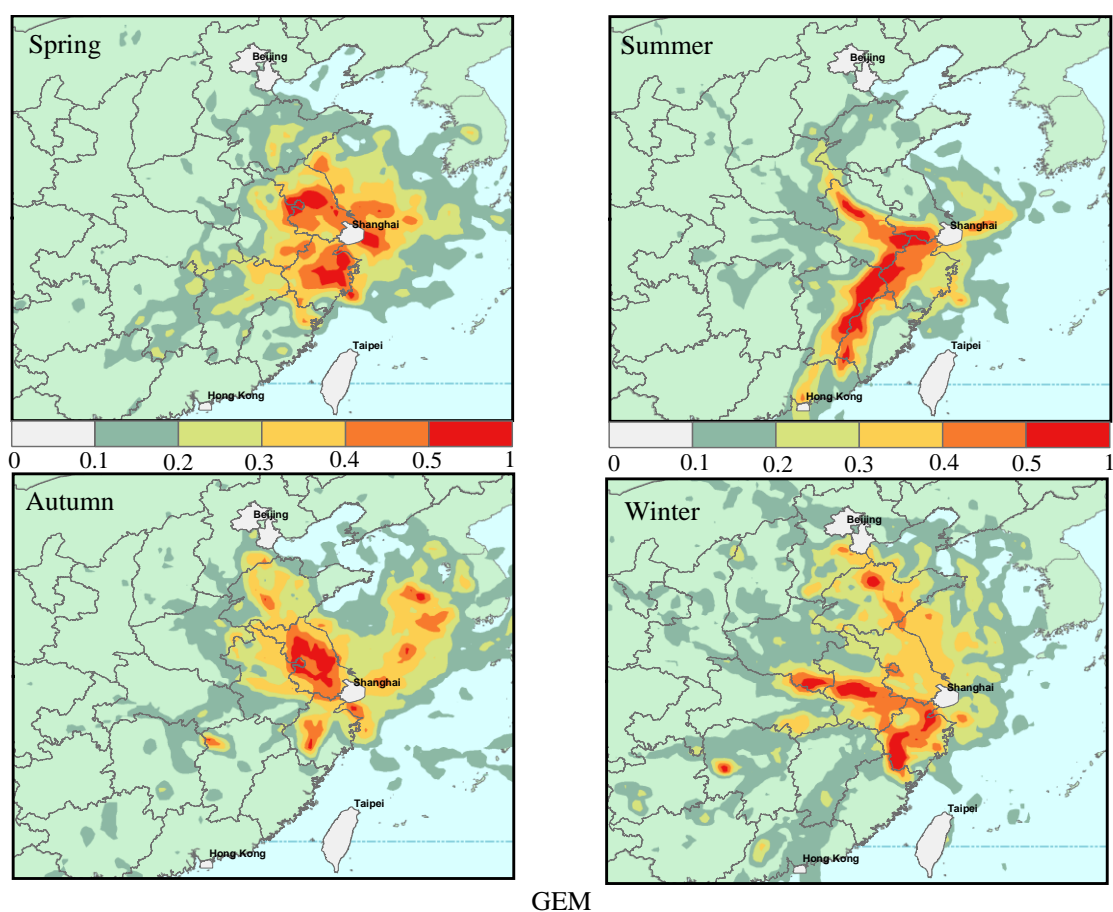
The copyright of individual parts of the supplement might differ from the CC BY 4.0 License.

Table S1. Atmospheric Hg emissions by province in 2014 (Wu et al., 2016).

Region	Provinces	Atmospheric Hg emissions in 2014 (t)	Region	Provinces	Atmospheric Hg emissions in 2014 (t)
North China	Beijing	3	South central China	Henan	66
	Tianjin	5		Hubei	14
	Hebei	39		Hunan	30
	Shanxi	16		Guangdong	21
	Inner Mongolia	26		Guangxi	13
Northeast China	Liaoning	17	Southwest China	Hainan	2
	Jilin	9		Chongqing	11
	Heilongjiang	6		Sichuan	14
East China	Shanghai	5		Guizhou	23
	Jiangsu	31		Yunnan	15
	Zhejiang	15		Tibet	1
	Anhui	17	Northwest China	Shanxi	27
	Fujian	8		Gansu	22
	Jiangxi	10		Qinghai	3
	Shandong	46		Ningxia	6
				Xinjiang	8

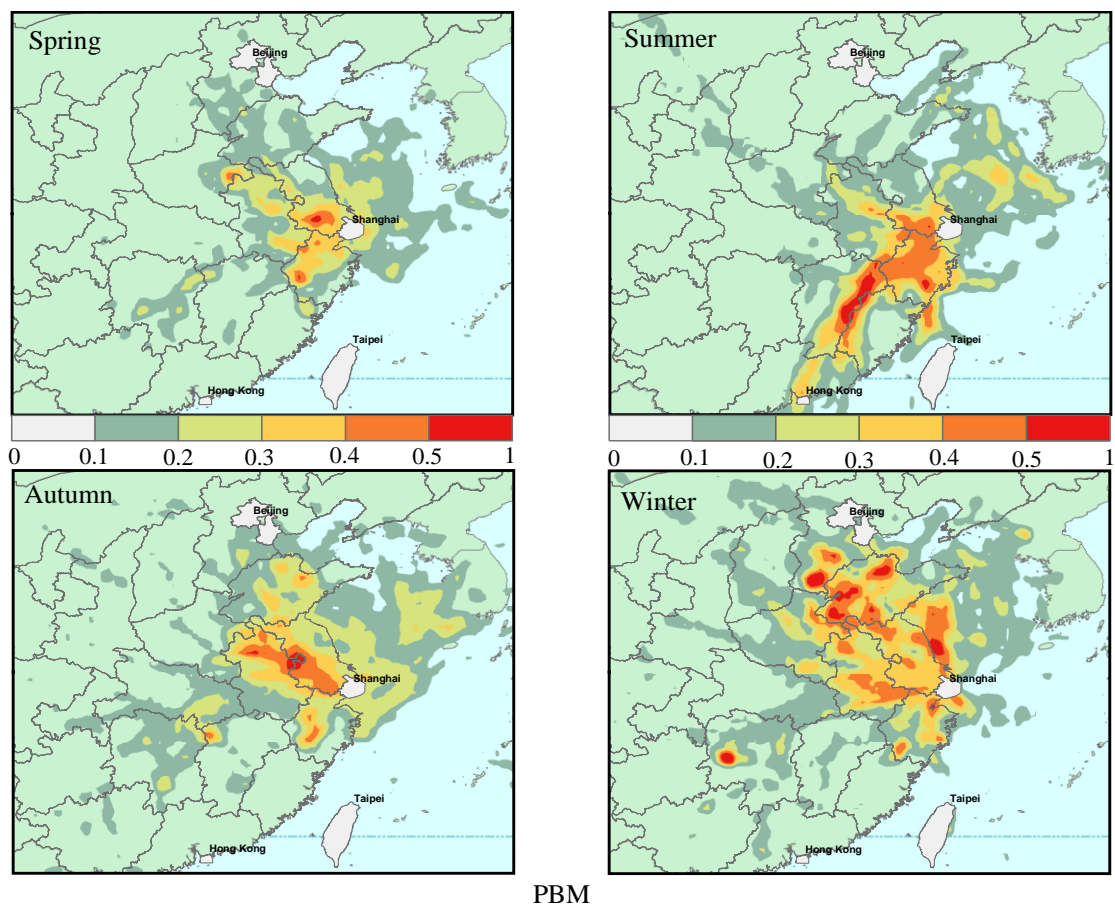
Table S2. P-value between seasons for GEM concentration

	spring	summer	autumn	winter
spring				
summer	p>0.05			
autumn	p<0.05	p<0.05		
winter	p>0.05	p>0.05	p<0.05	



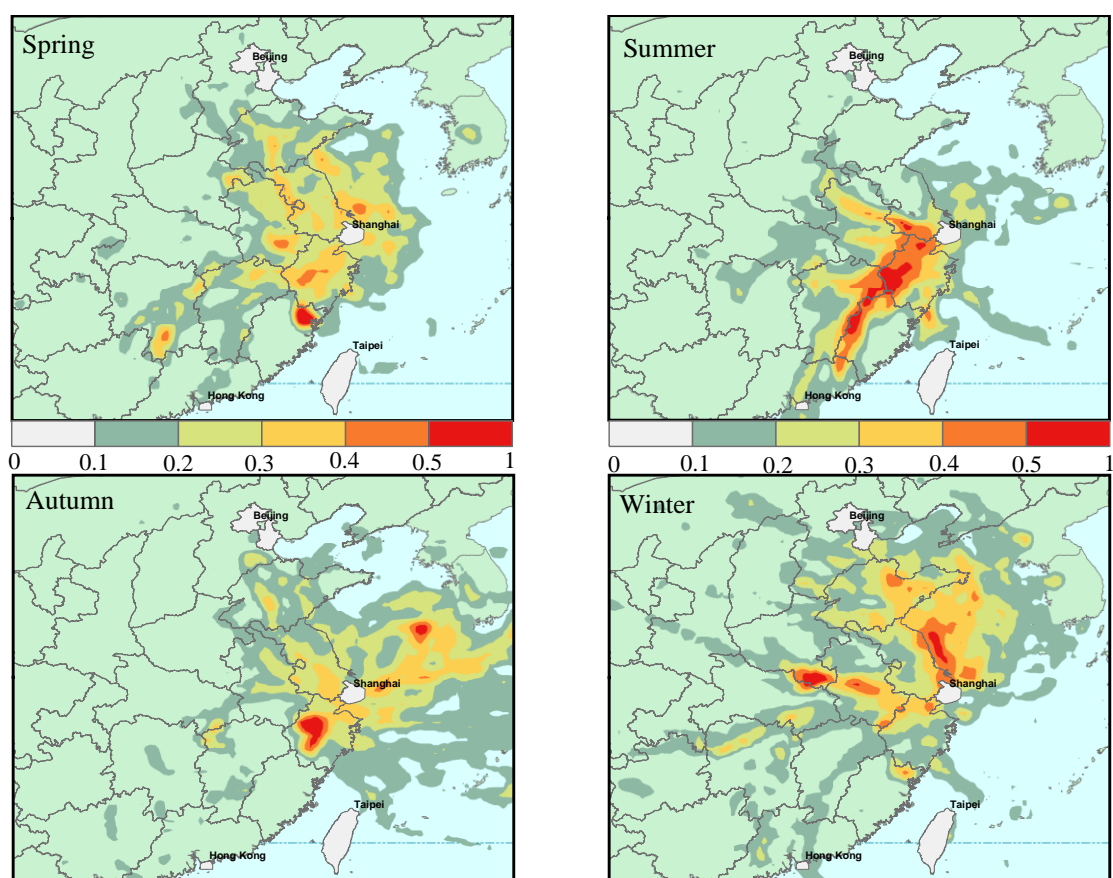
GEM

Figure S1. Potential source regions of seasonal GEM at the sampling site according to PSCF analysis.



PBM

Figure S2. Potential source regions of seasonal PBM at the sampling site according to PSCF analysis.



GOM

Figure S3. Potential source regions of seasonal GOM at the sampling site according to PSCF analysis.

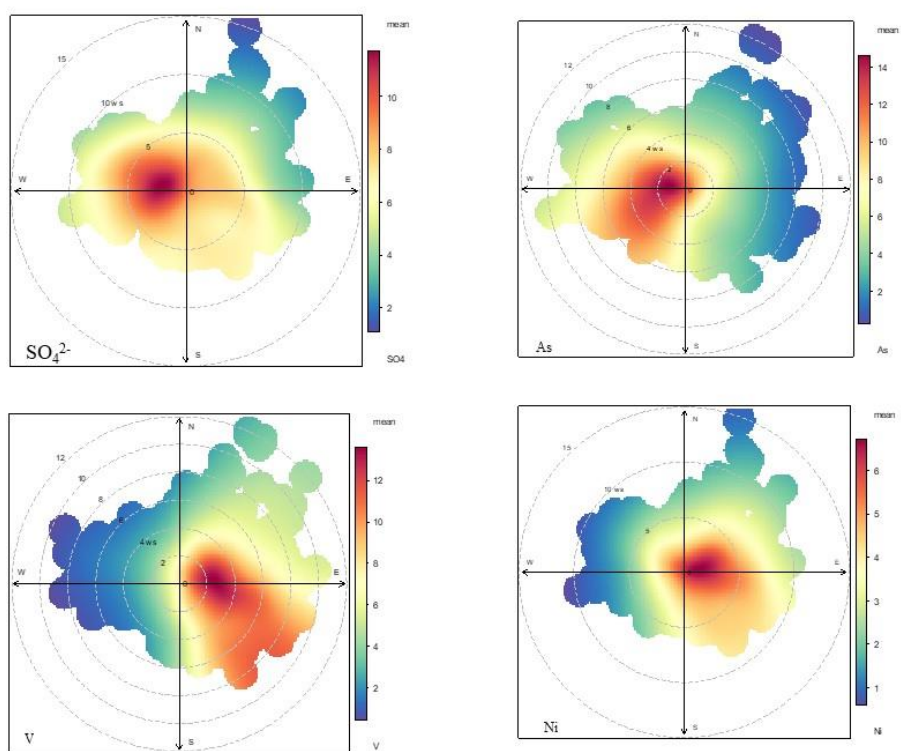


Fig. S4. wind roses of SO_4^{2-} , As, Ni, and V

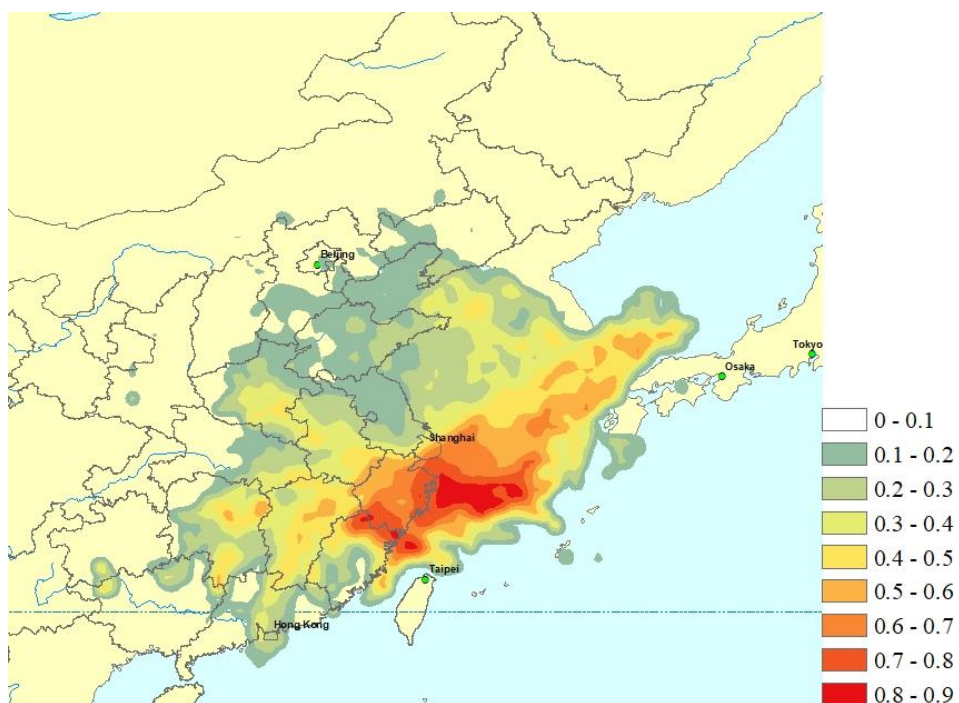


Fig. S5. PSCF modeling of the GEM from factor 2 of PMF modeling.