

The HYSPLIT backward trajectories started from altitudes of about 11.75 km over Tomsk (56.48° N, 85.05° E) at 17:30 UTC on 27 May 2016.

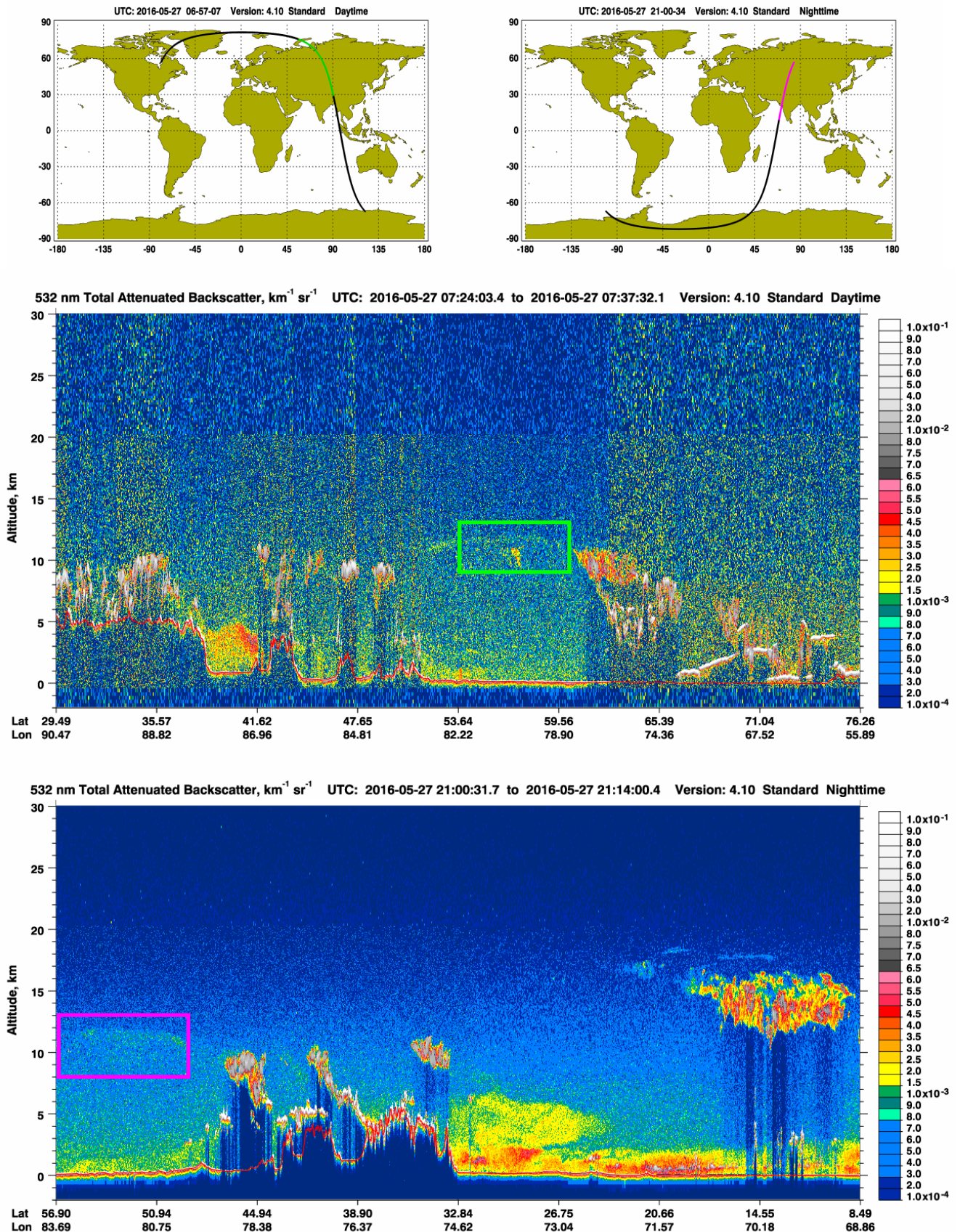
The closest to Tomsk daytime (image three) and nighttime (image one) CALIPSO orbit tracks, version 4.10

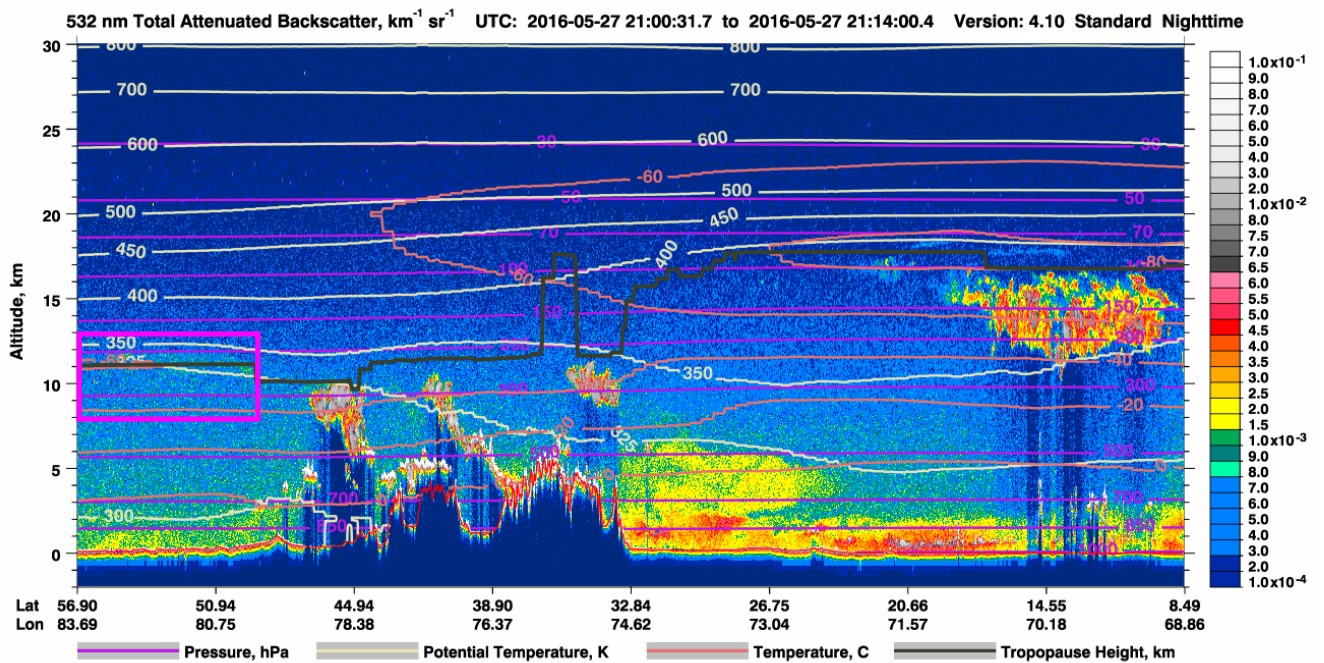
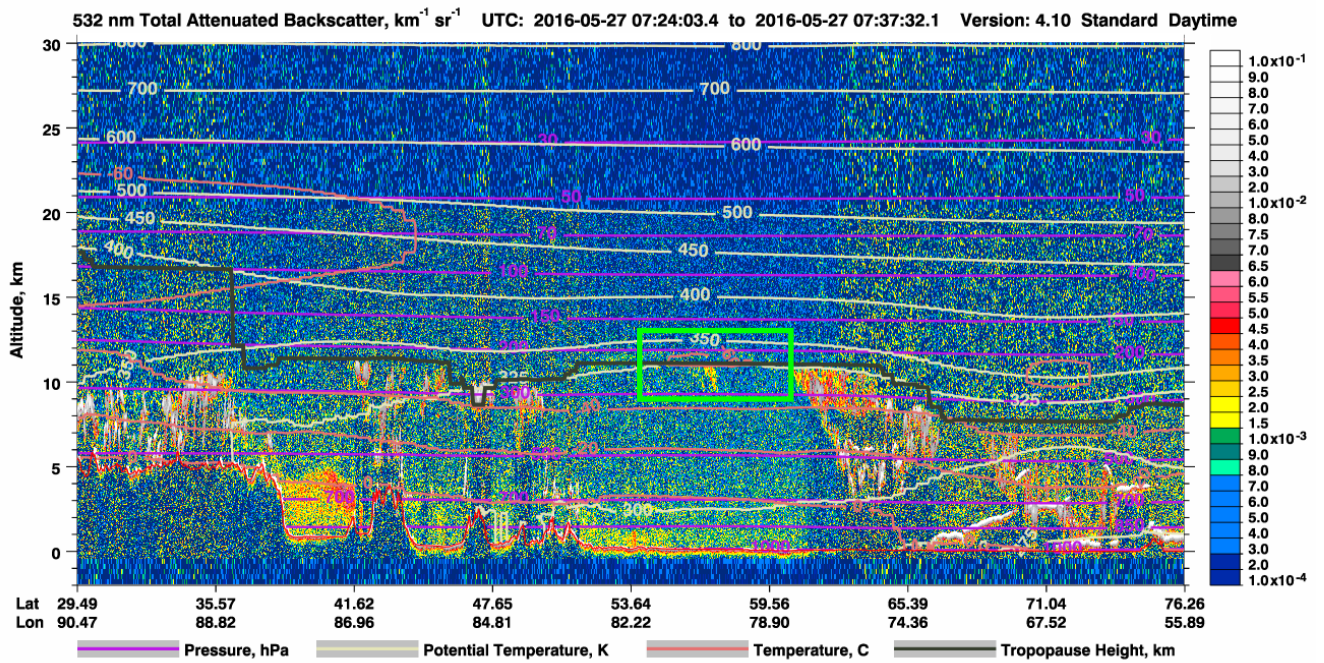
Daytime orbit track before lidar measurement in Tomsk:

https://www-calipso.larc.nasa.gov/products/lidar/browse_images/show_detail.php?s=production&v=V4-10&browse_date=2015-07-16&orbit_time=19-43-13&page=4&granule_name=CAL_LID_L1-Standard-V4-10.2015-07-16T19-43-13ZD.hdf

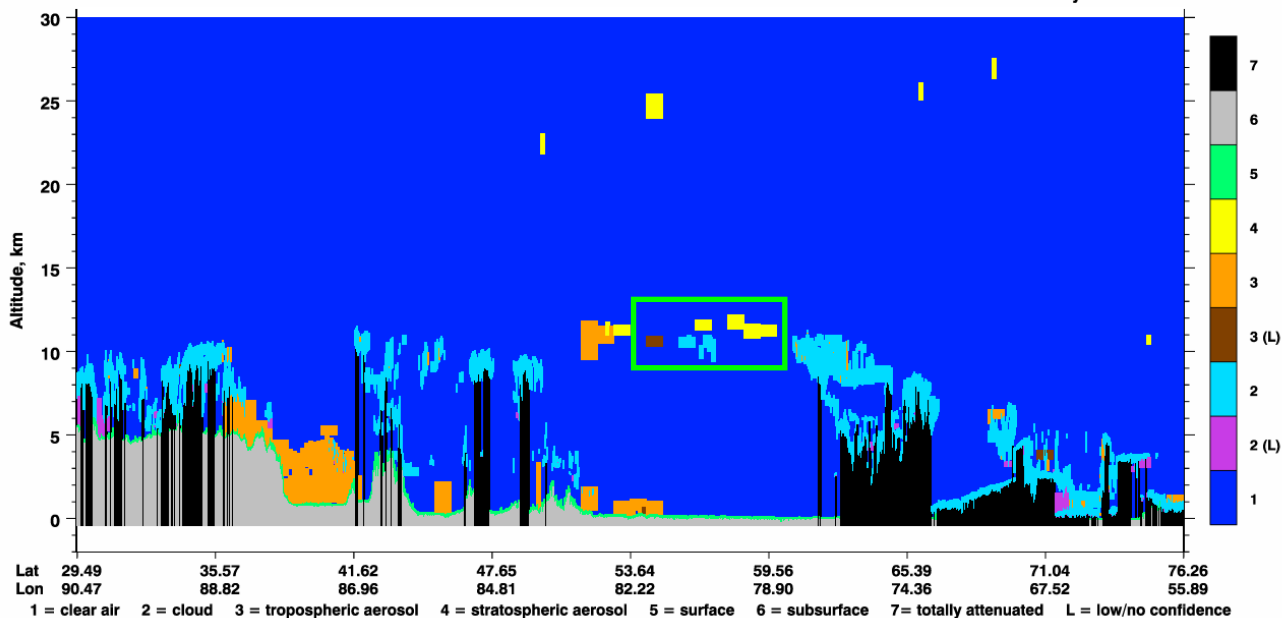
Nighttime orbit track after lidar measurement in Tomsk:

https://www-calipso.larc.nasa.gov/products/lidar/browse_images/show_detail.php?s=production&v=V4-10&browse_date=2015-07-16&orbit_time=20-35-33&page=1&granule_name=CAL_LID_L1-Standard-V4-10.2015-07-16T20-35-33ZN.hdf

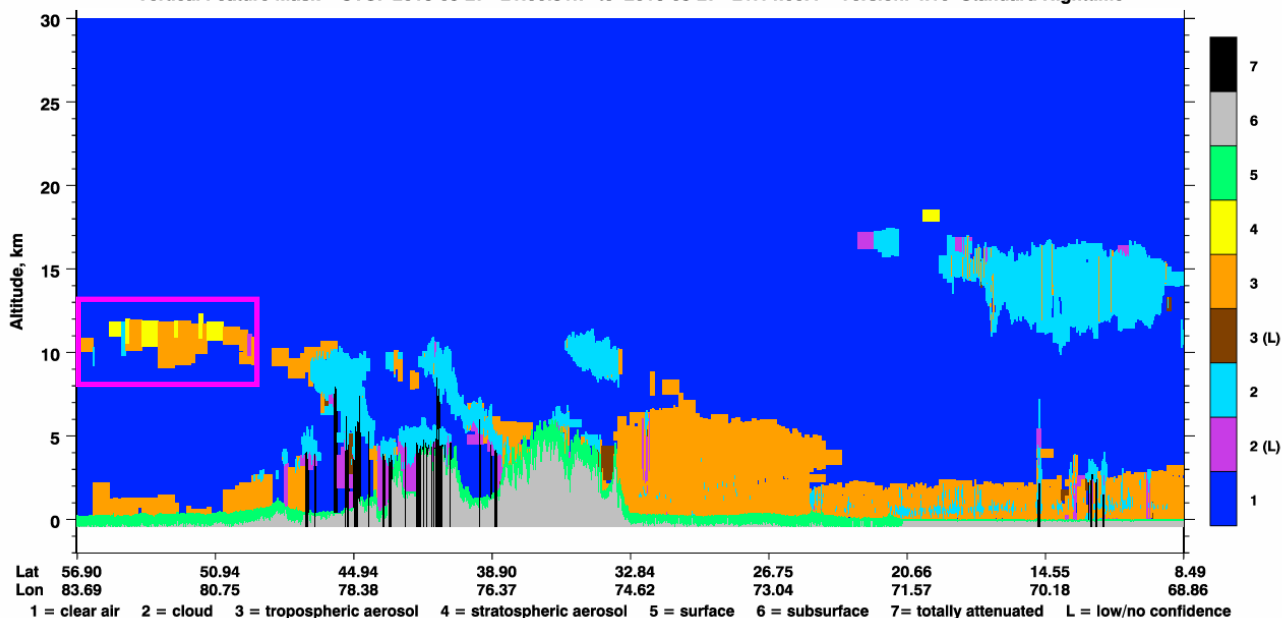


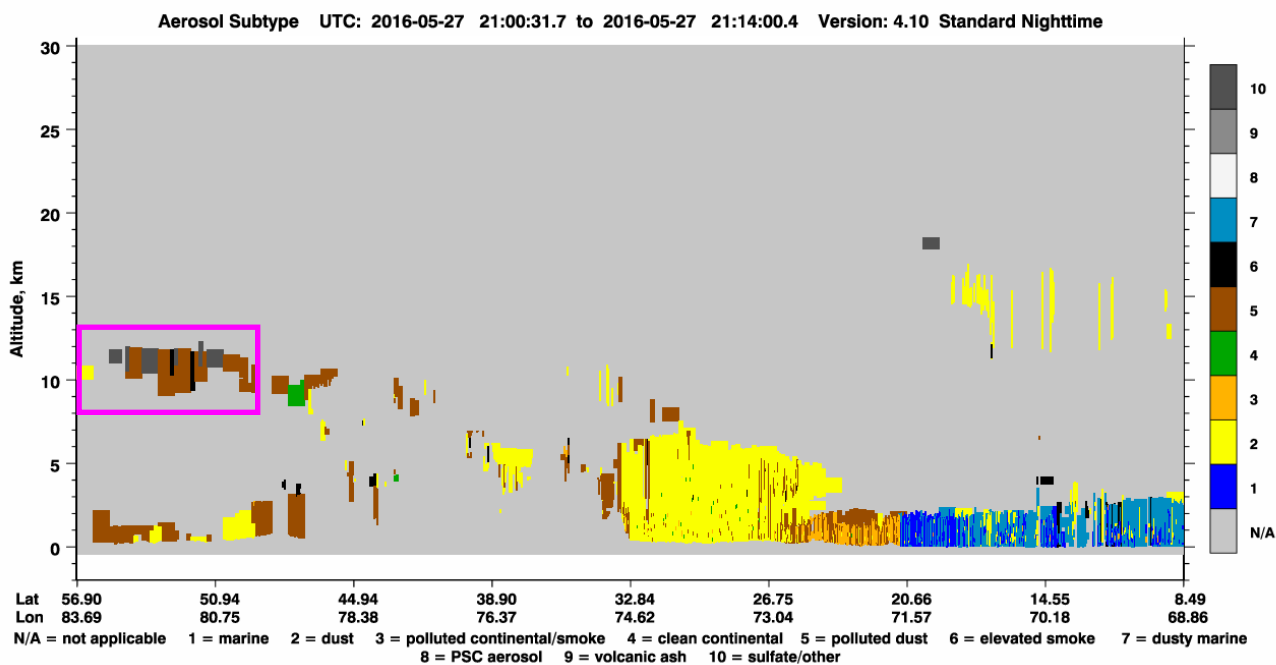
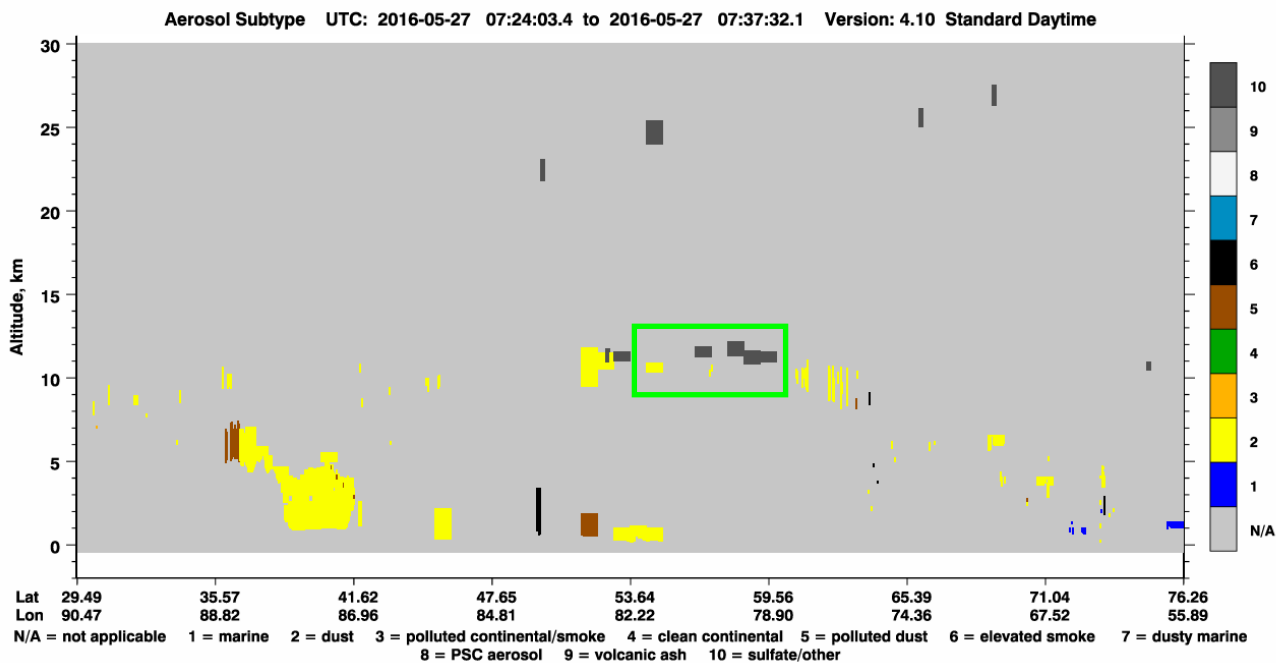


Vertical Feature Mask UTC: 2016-05-27 07:24:03.4 to 2016-05-27 07:37:32.1 Version: 4.10 Standard Daytime

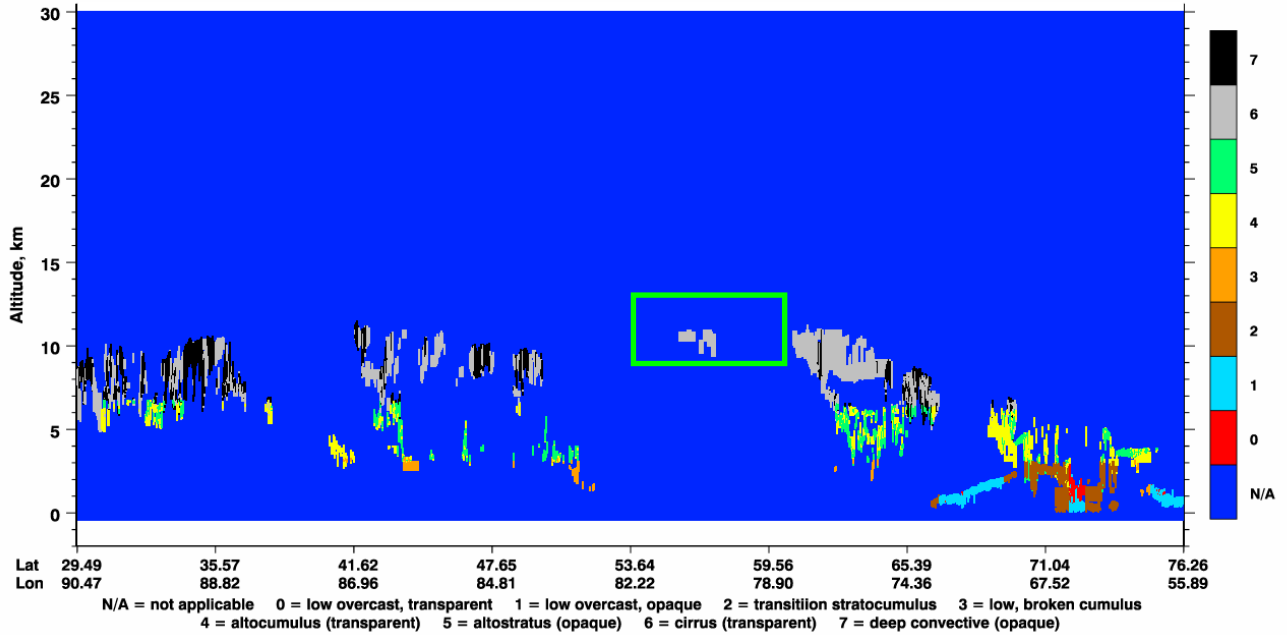


Vertical Feature Mask UTC: 2016-05-27 21:00:31.7 to 2016-05-27 21:14:00.4 Version: 4.10 Standard Nighttime





Cloud Subtype UTC: 2016-05-27 07:24:03.4 to 2016-05-27 07:37:32.1 Version: 4.10 Standard Daytime



Cloud Subtype UTC: 2016-05-27 21:00:31.7 to 2016-05-27 21:14:00.4 Version: 4.10 Standard Nighttime

