

Supplement of Atmos. Chem. Phys., 19, 219–232, 2019
<https://doi.org/10.5194/acp-19-219-2019-supplement>
© Author(s) 2019. This work is distributed under
the Creative Commons Attribution 4.0 License.



Supplement of

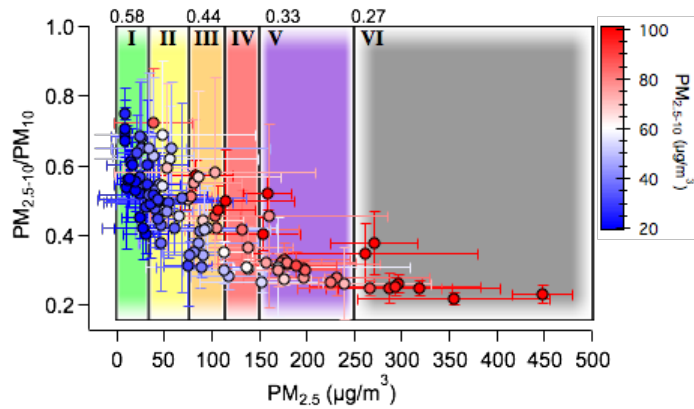
Synergistic effect of water-soluble species and relative humidity on morphological changes in aerosol particles in the Beijing megacity during severe pollution episodes

Xiaole Pan et al.

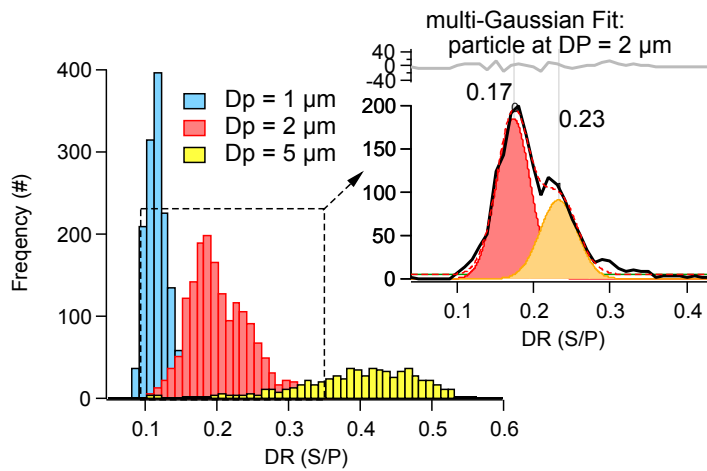
Correspondence to: Xiaole Pan (panxiaole@mail.iap.ac.cn)

The copyright of individual parts of the supplement might differ from the CC BY 4.0 License.

Supplementary Figures



SF.1 The relationship between $PM_{2.5-10}/PM_{10}$ as a function of mass concentration of $PM_{2.5}$. Colored-block behind the symbols indicate the air quality level classifications. Color filled circles indicated the daily averaged mass concentration of $PM_{2.5}$.



SF.2 Scatter plot of mass fraction of particle in coarse mode ($PM_{2.5-10}$) in PM_{10} as a function of mass concentration of $PM_{2.5}$. The shaded colour represent the air quality level during observation period.