



Supplement of

Characterisation and source identification of biofluorescent aerosol emissions over winter and summer periods in the United Kingdom

Elizabeth Forde et al.

Correspondence to: Elizabeth Forde (elizabeth.forde@manchester.ac.uk)

The copyright of individual parts of the supplement might differ from the CC BY 4.0 License.

1 Chilbolton Temperature boxplot

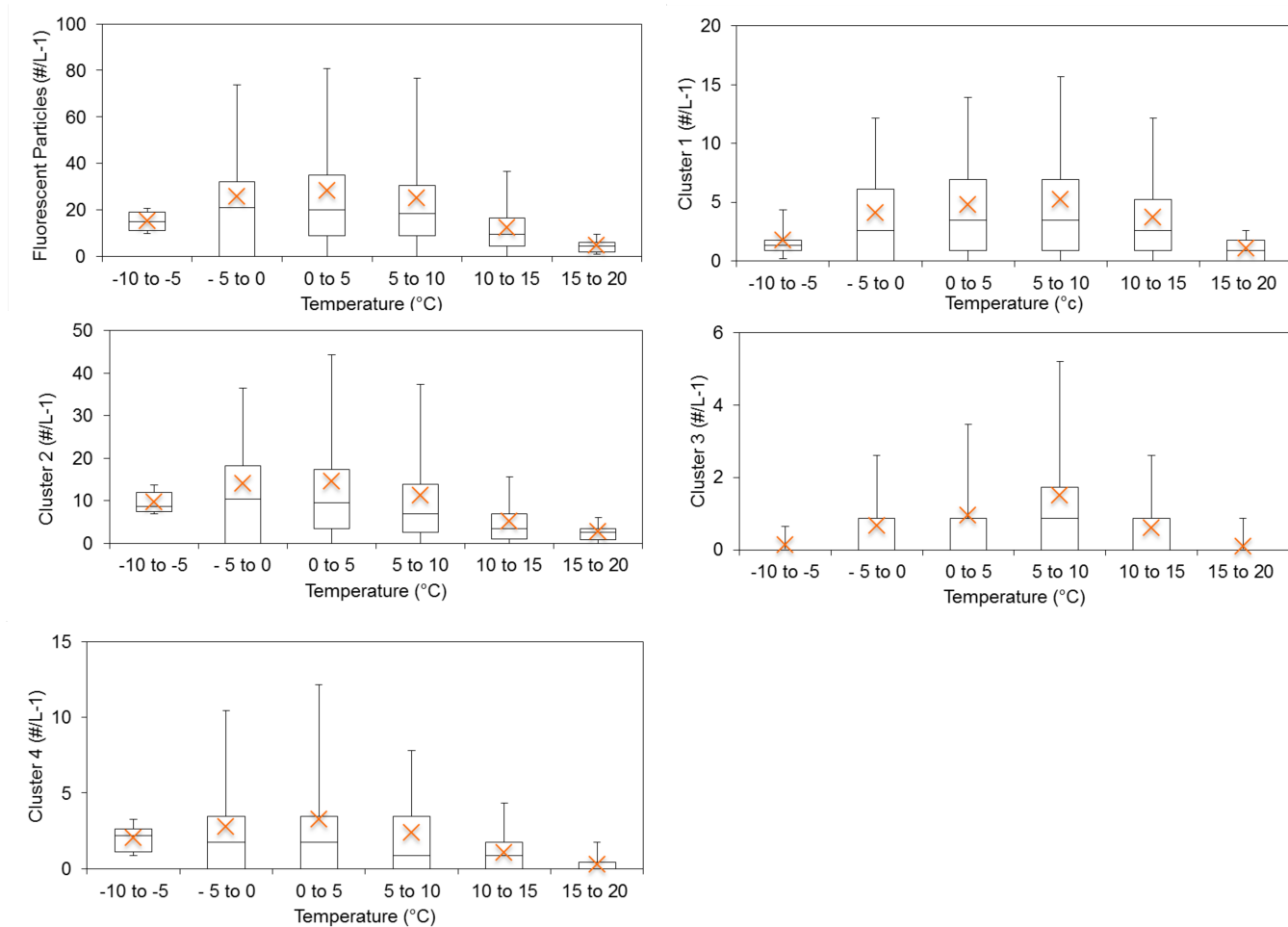


Figure S1: Chilbolton temperature plots in relation to total fluorescent particles and clusters.

2 Chilbolton Relative Humidity boxplot

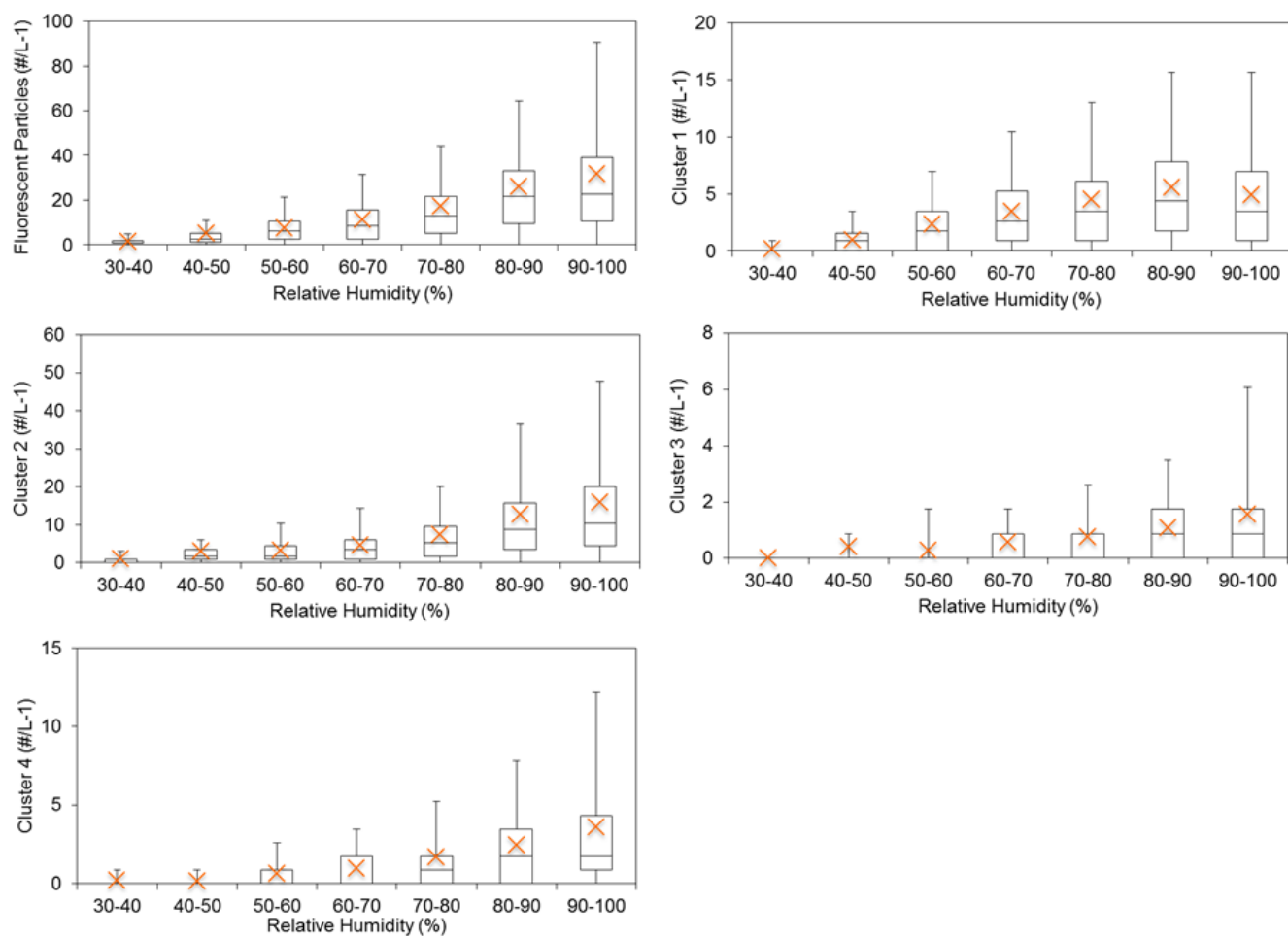


Figure S2: Chilbolton relative humidity plots in relation to total fluorescent particles and clusters.

3 Weybourne Temperature boxplot

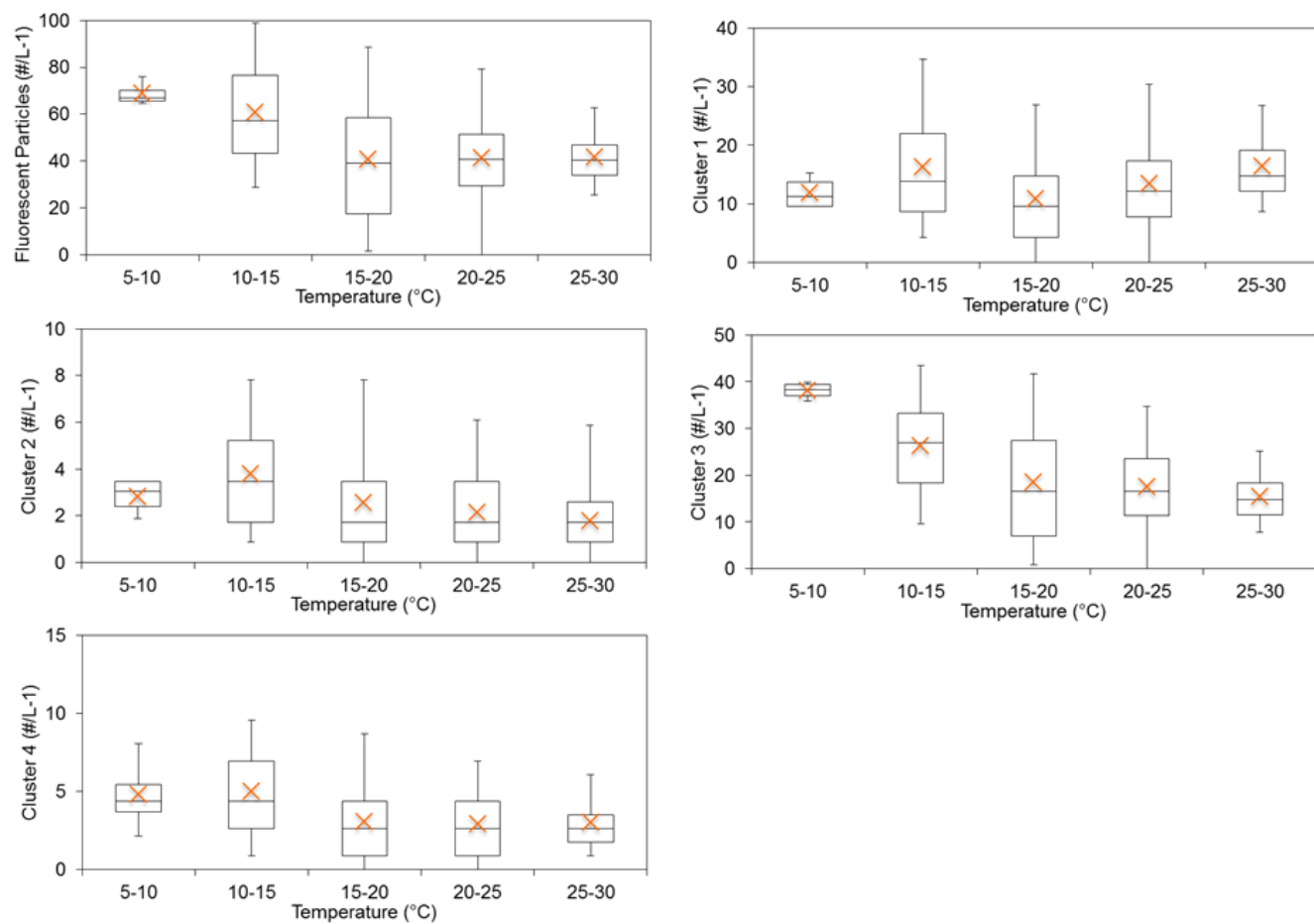


Figure S3: Weybourne temperature plots in relation to total fluorescent particles and clusters.

4 Weybourne Relative Humidity boxplot

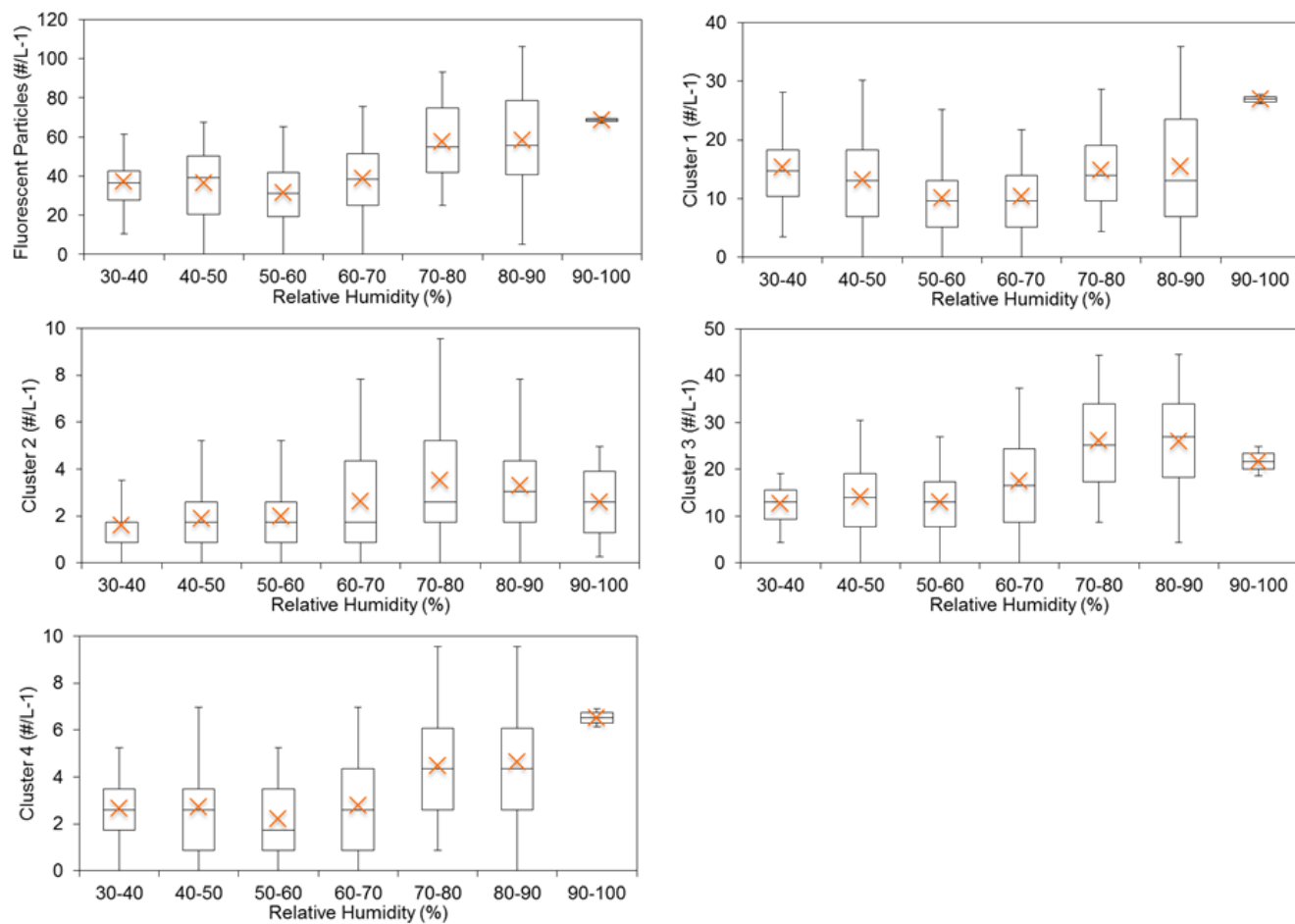


Figure S4: Weybourne relative humidity plots in relation to total fluorescent particles and clusters.

5 Davidstow Temperature boxplot

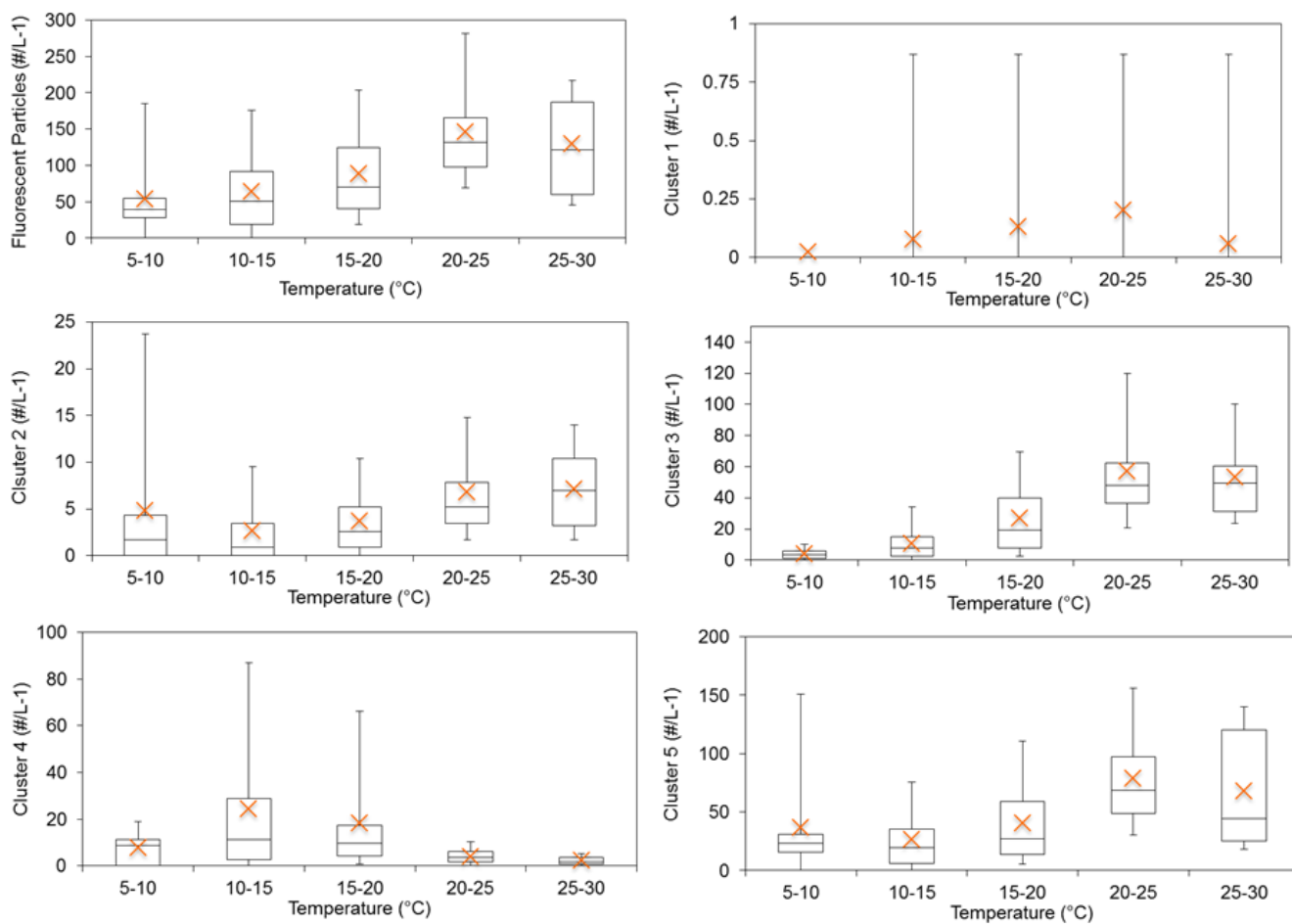


Figure S5: Davidstow temperature plots in relation to total fluorescent particles and clusters.

6 Davidstow Relative Humidity boxplot

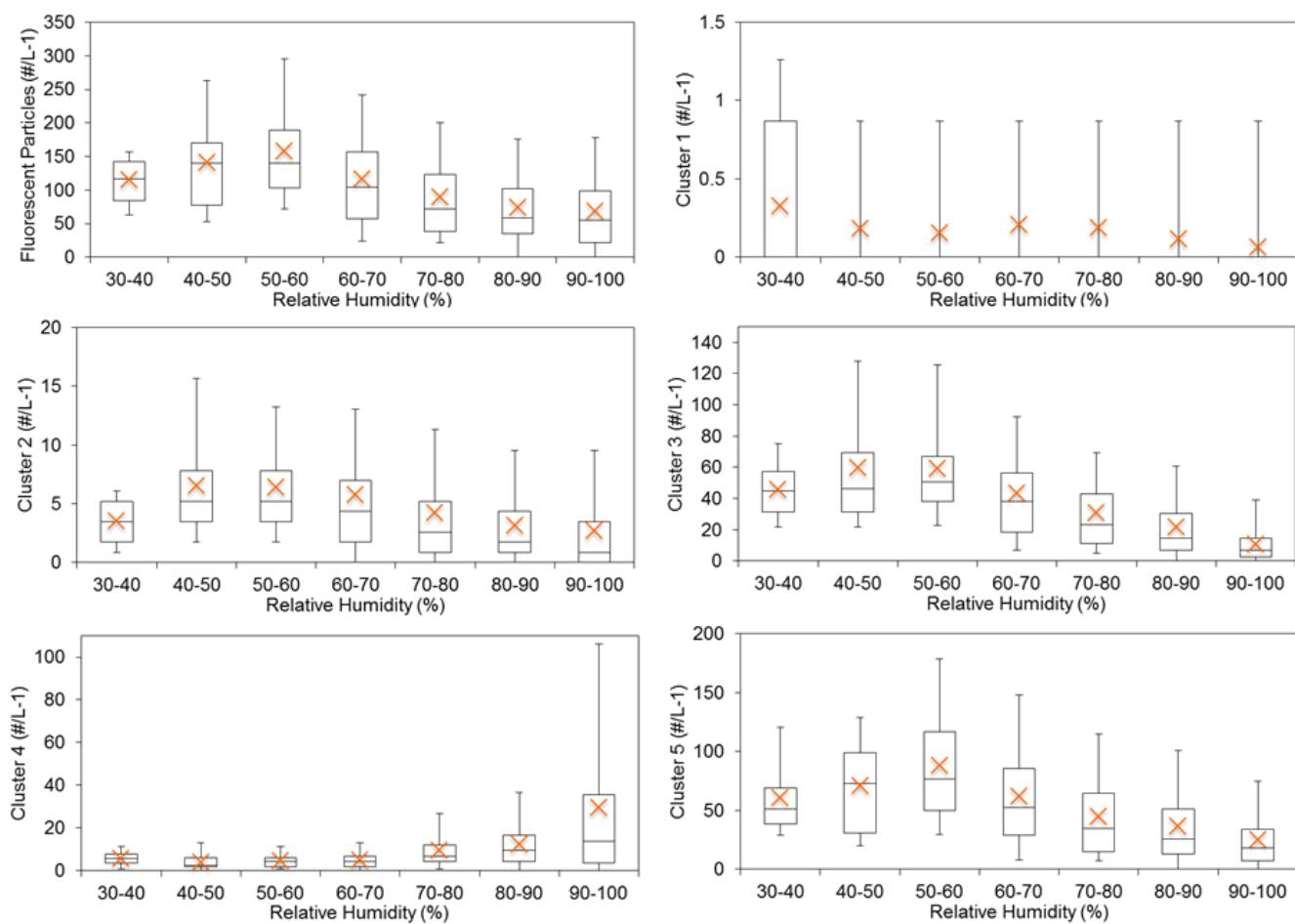


Figure S6: Davidstow relative humidity plots in relation to total fluorescent particles and clusters.

7 Capel Dewi Temperature boxplot

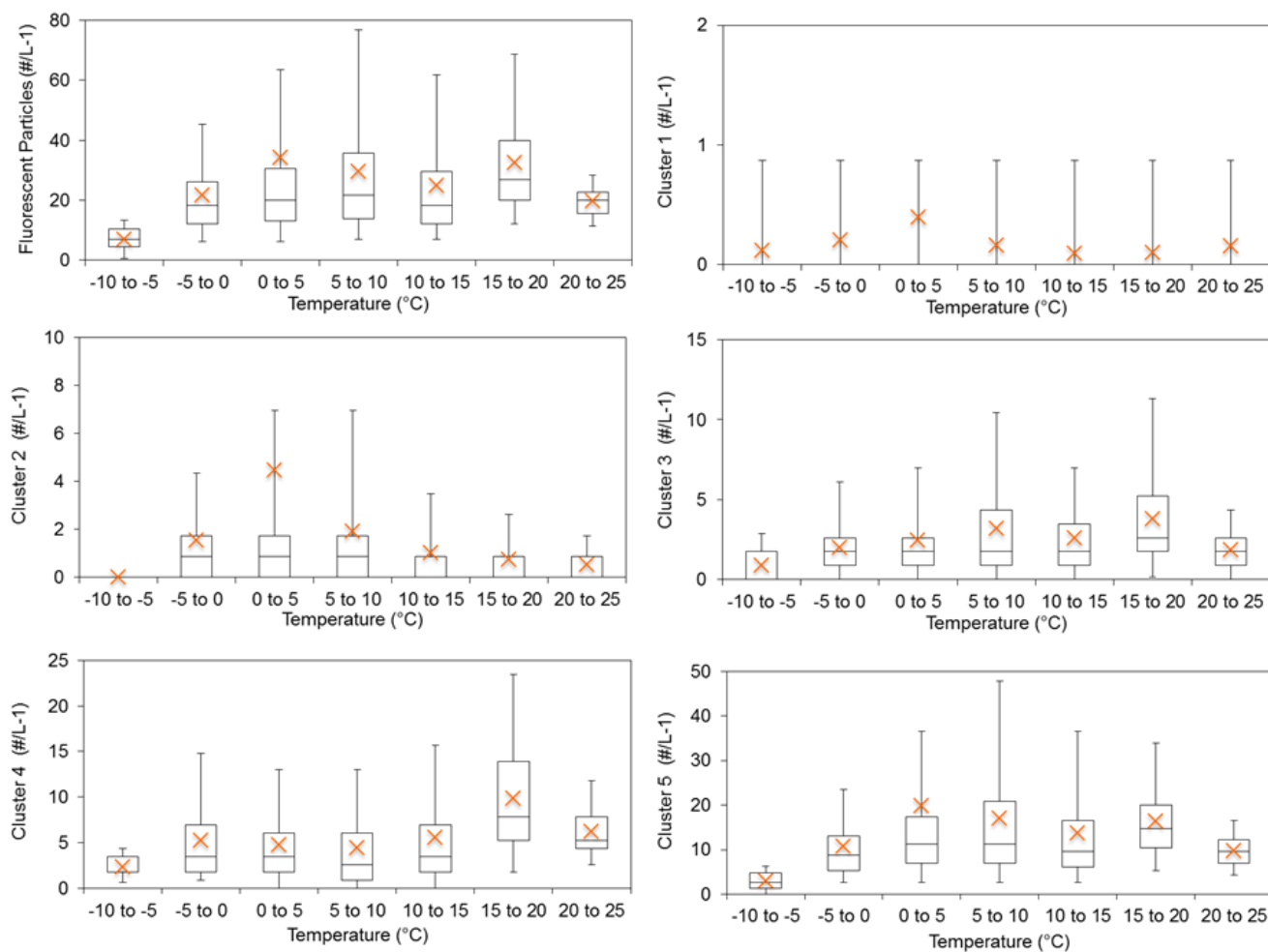


Figure S7: Capel Dewi temperature plots in relation to total fluorescent particles and clusters.

8 Capel Dewi Relative Humidity boxplot

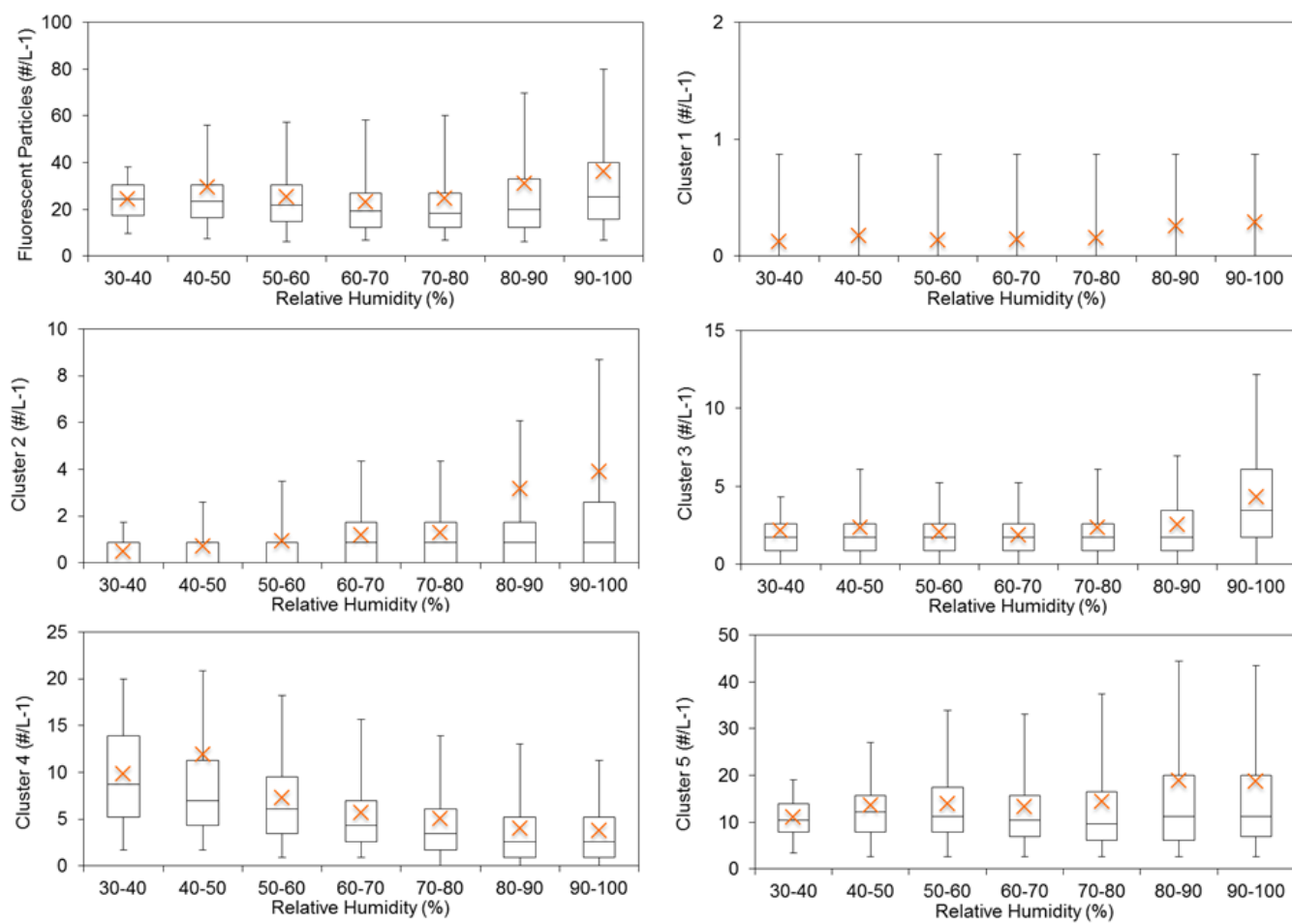


Figure S8: Capel Dewi relative humidity plots in relation to total fluorescent particles and clusters.

9 Openair - Chilbolton

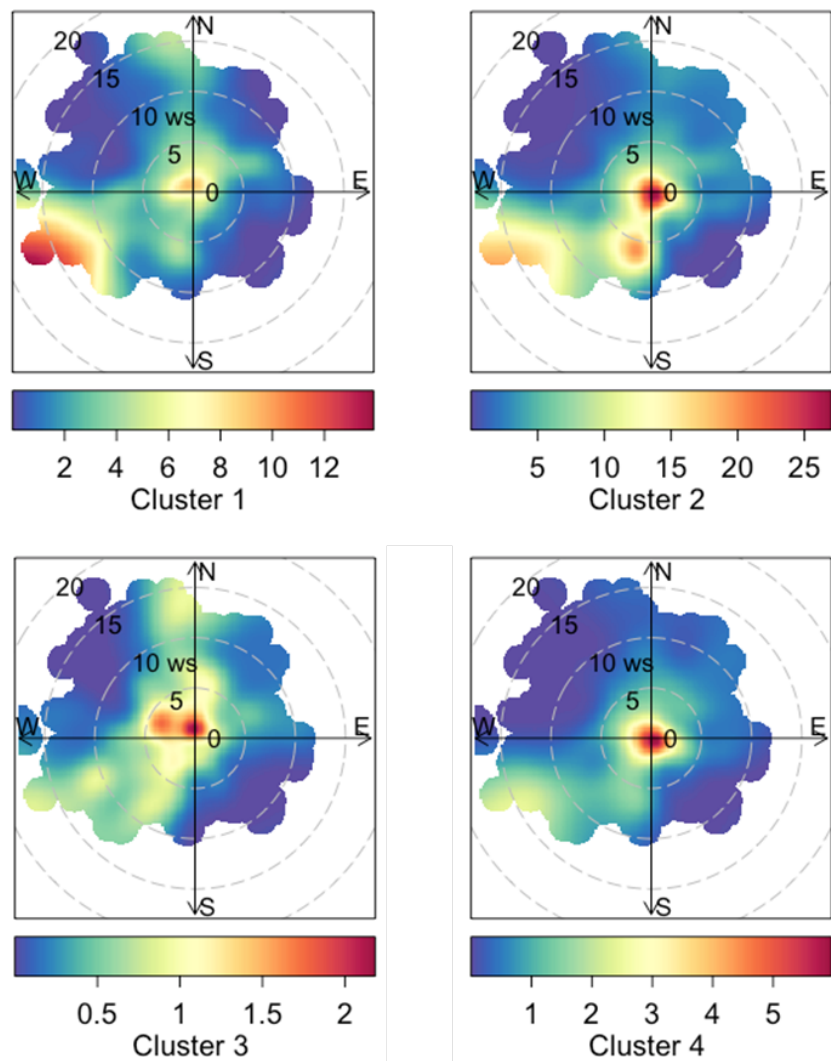


Figure S9: Chilbolton Openair PolarPlots.

10 Openair - Weybourne

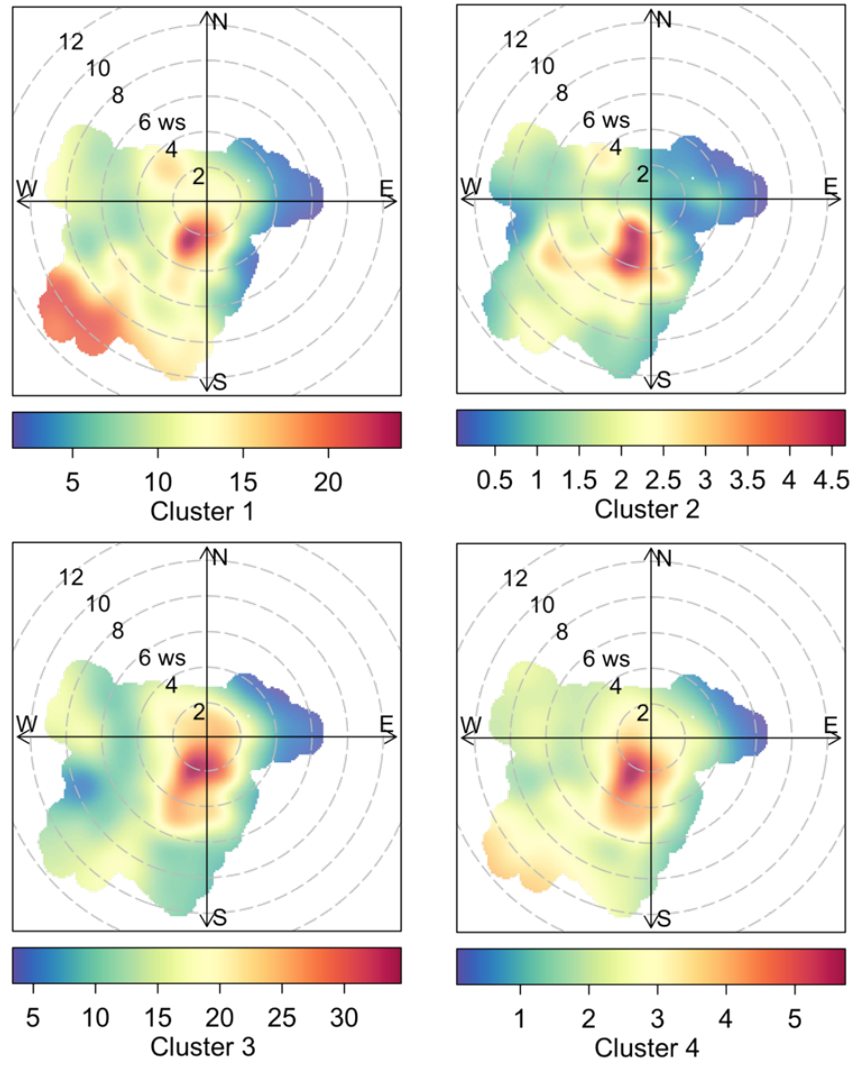


Figure S10: Weybourne Openair PolarPlots.

11 Openair - Davidstow

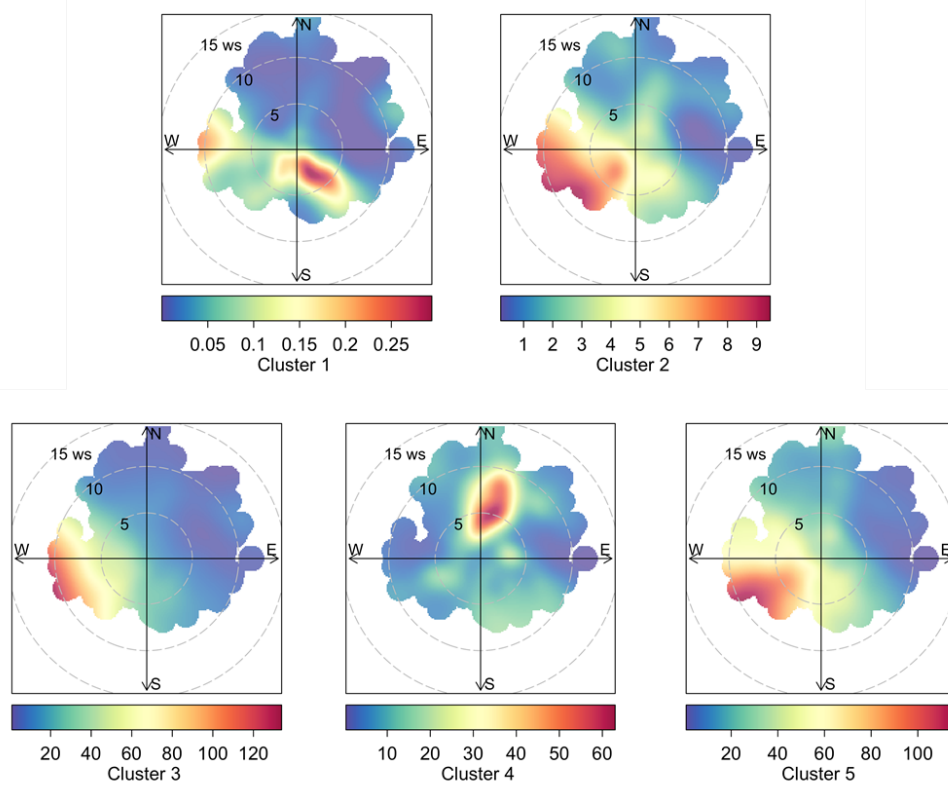


Figure S11: Davidstow Openair PolarPlots.

12 Openair - Capel Dewi

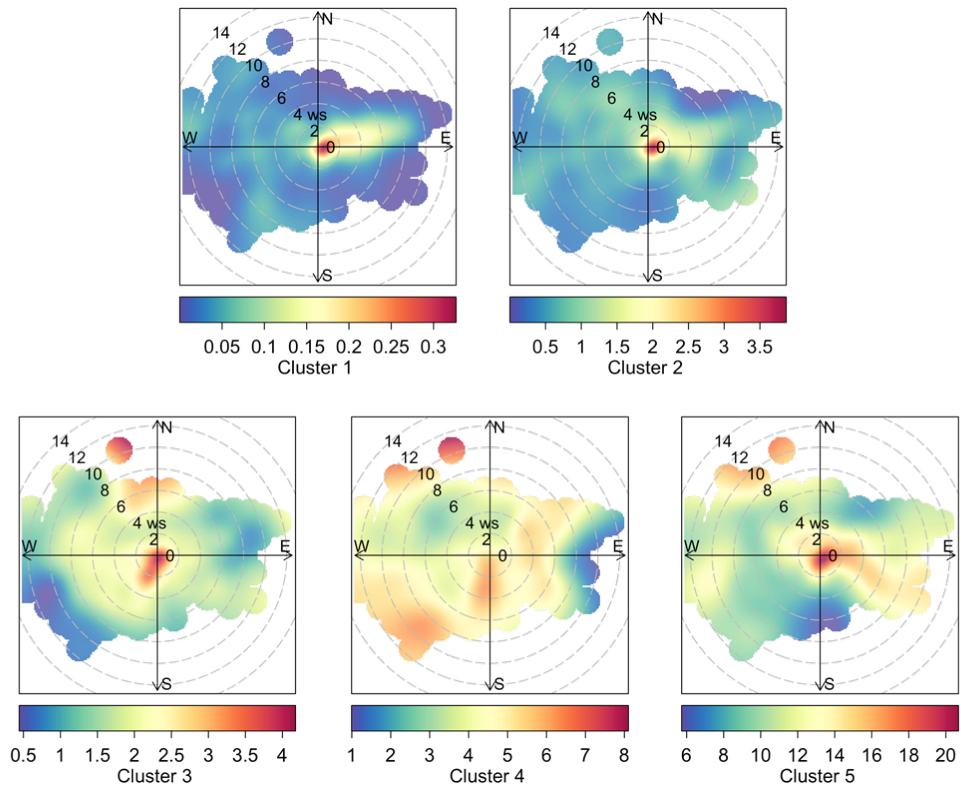


Figure S12: Capel Dewi Openair PolarPlots.

13 FT + 3SD/9SD - Chilbolton

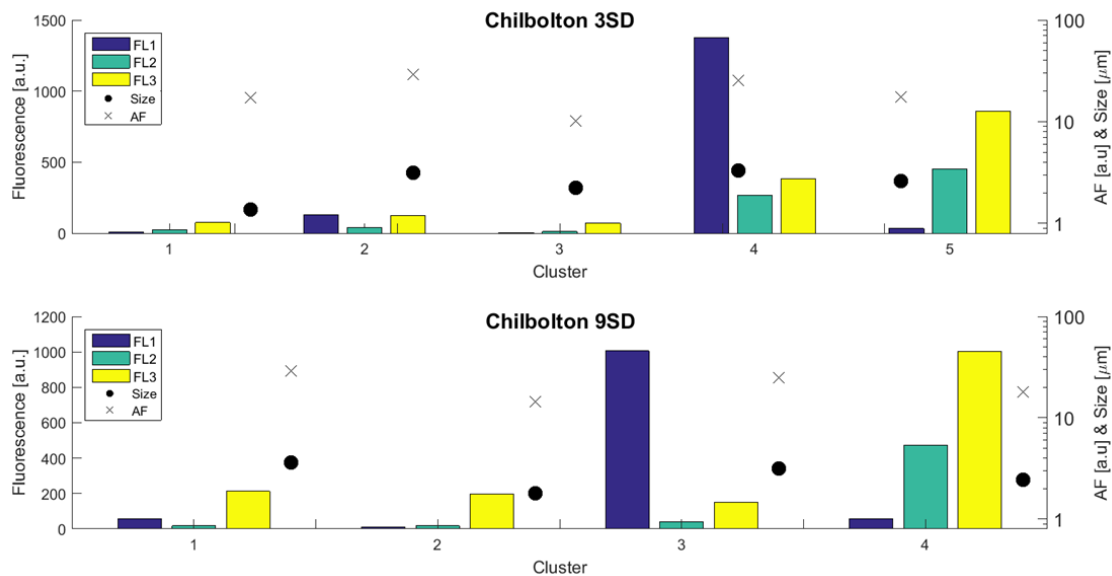


Figure S13: Chilbolton 3SD and 9SD cluster solutions.

14 FT + 3SD/9SD - Weybourne

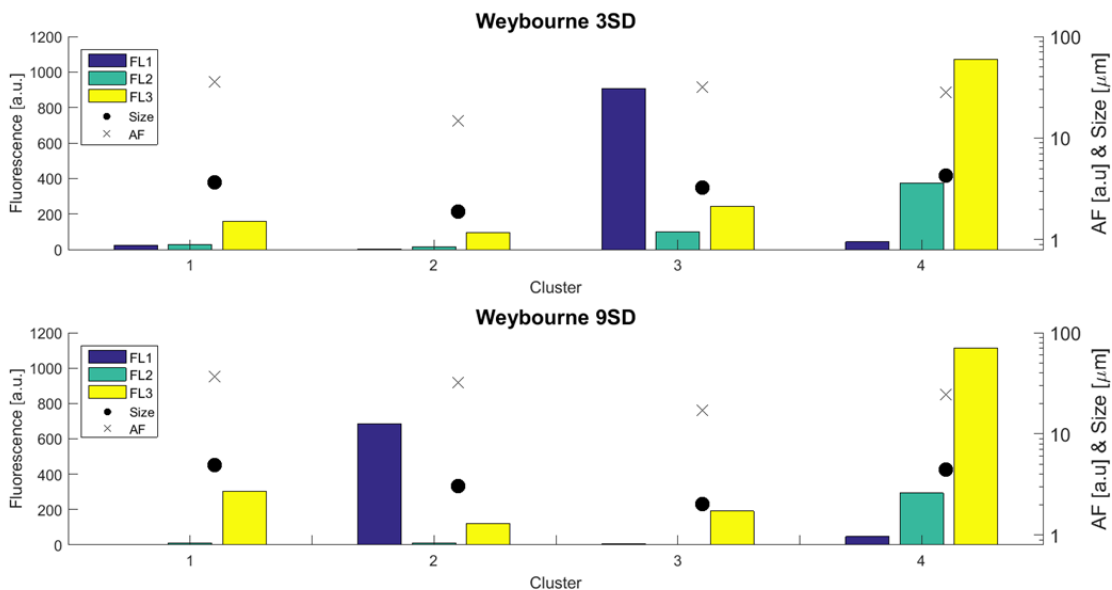


Figure S14: Weybourne 3SD and 9SD cluster solutions.

15 FT + 3SD/9SD - Davidstow

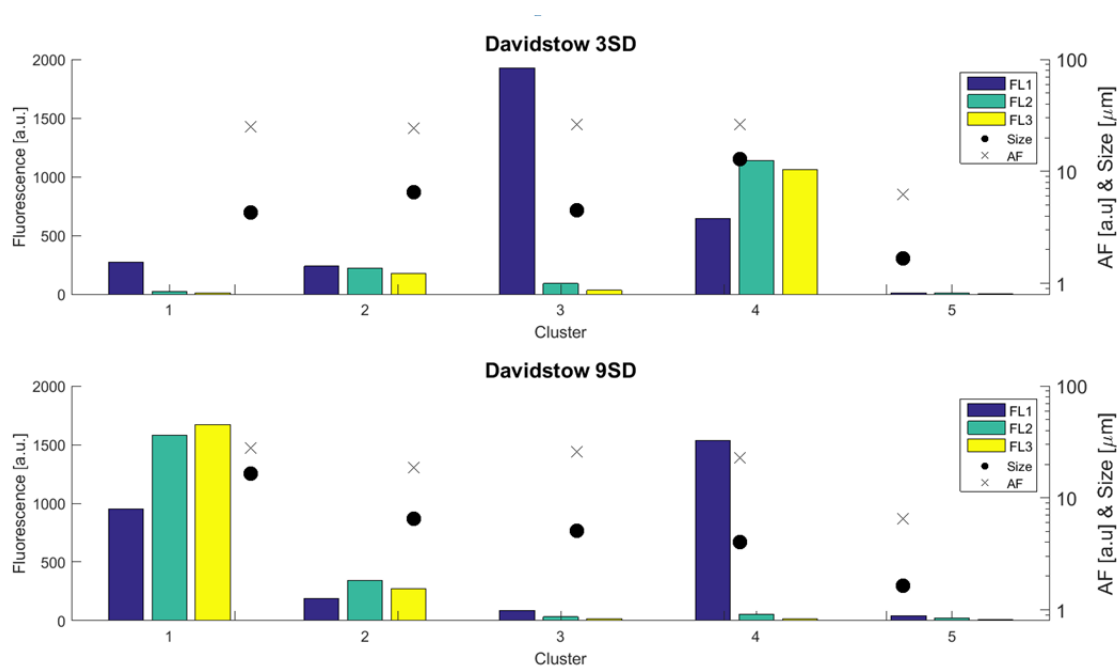


Figure S15: Davidstow 3SD and 9SD cluster solutions.

16 FT + 3SD/9SD - Capel Dewi

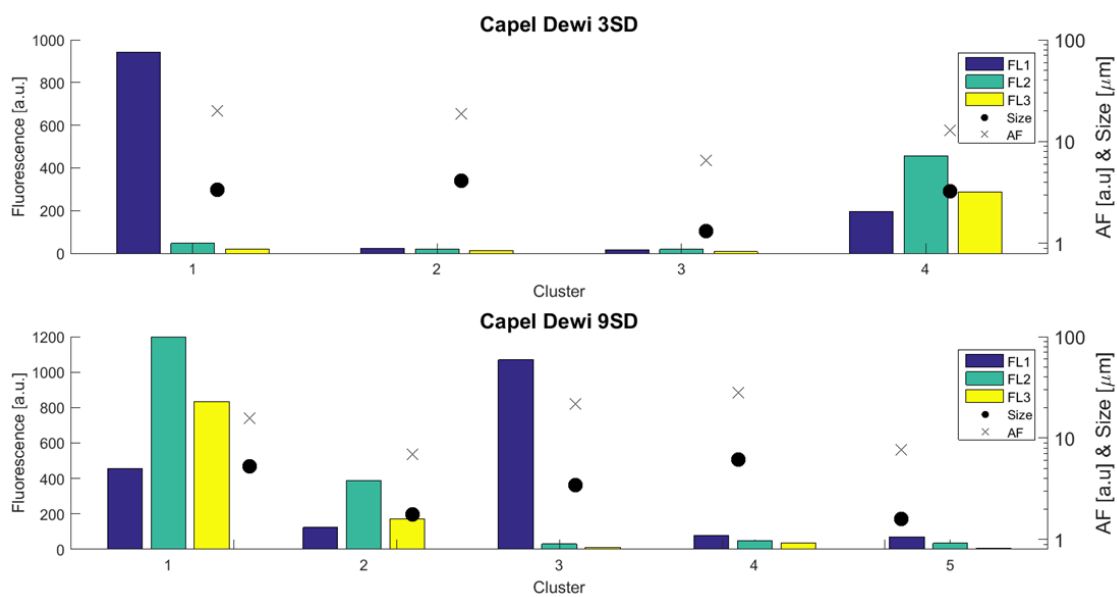


Figure S16: Capel Dewi 3SD and 9SD cluster solutions.