



Supplement of

On the seasonal variation in observed size distributions in northern Europe and their changes with decreasing anthropogenic emissions in Europe: climatology and trend analysis based on 17 years of data from Aspvreten, Sweden

P. Tunved and J. Ström

Correspondence to: Peter Tunved (peter.tunved@aces.su.se)

The copyright of individual parts of the supplement might differ from the CC BY 4.0 License.

Supplementary material:

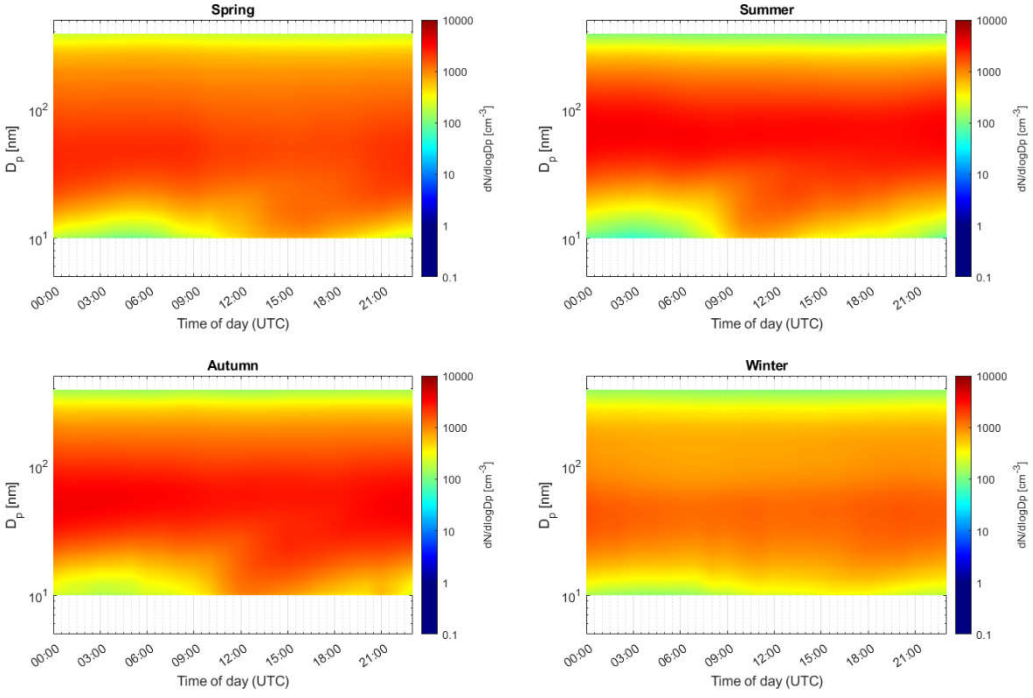


Figure S1: Diurnal variation of seasonally averaged mean number size distributions.

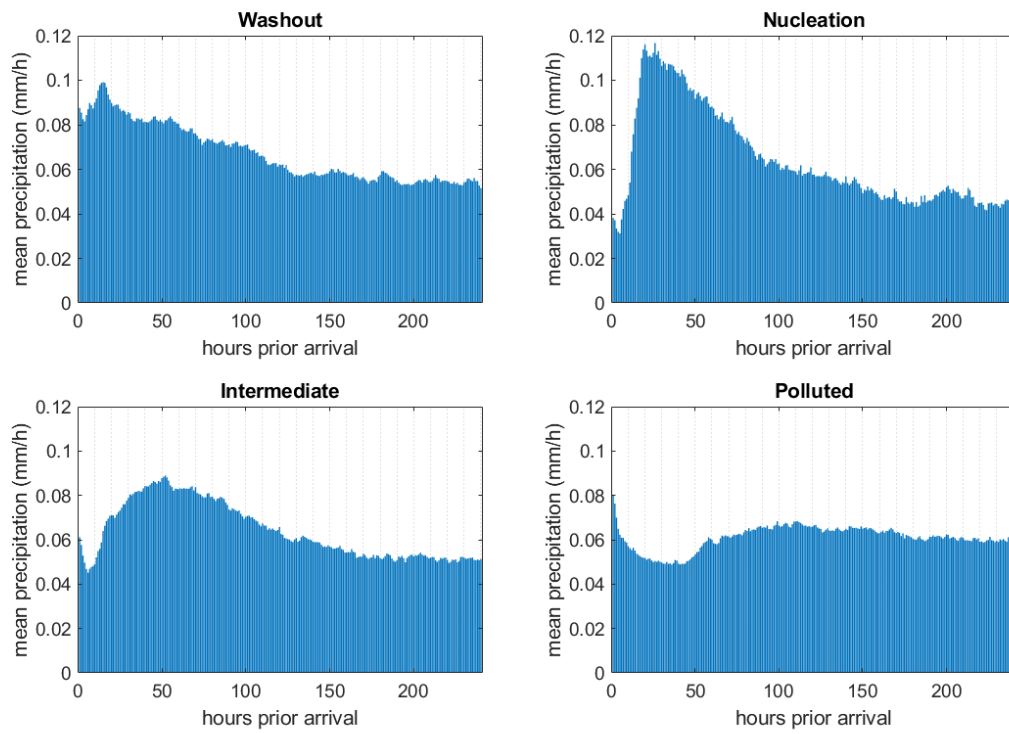


Figure S2: Average of 10 days precipitation along trajectories connected to main cluster groups Washout, Nucleation, Intermediate and Polluted. Aspvreten, 2000-20017.

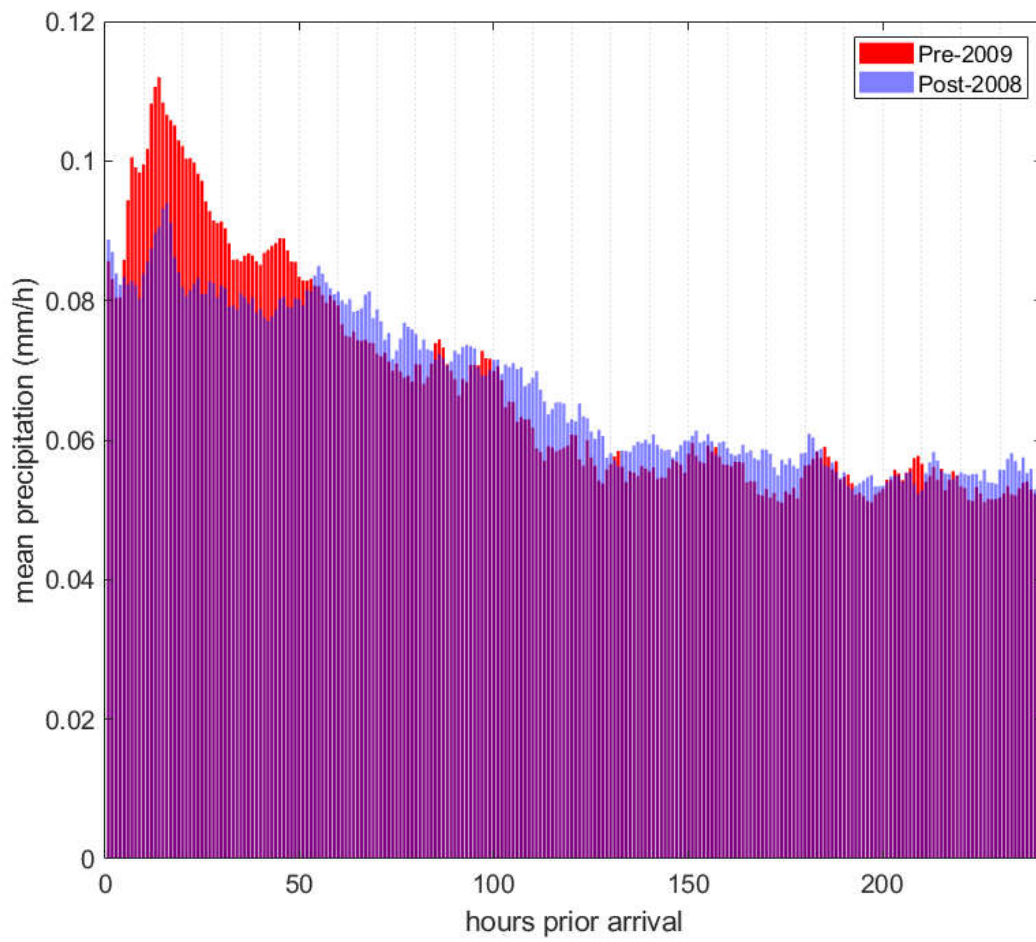


Figure S3: Average hourly precipitation along 10-day trajectories arriving Aspveten pre-2009 and post-2008. See text for further details.

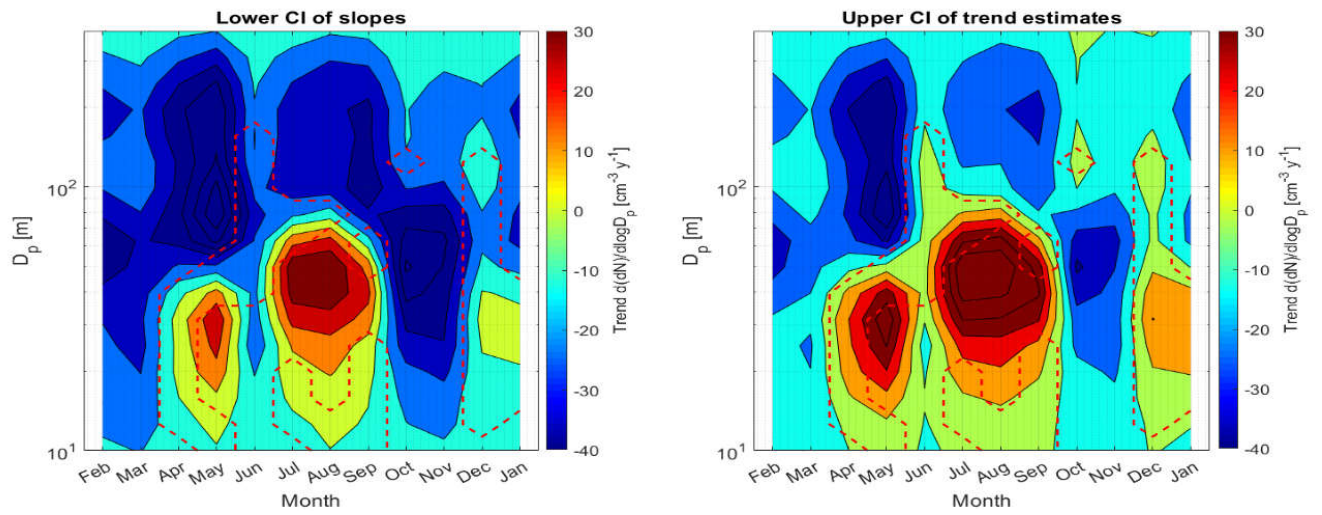


Figure S4: As Figure 8, but showing 95% Confidence interval of Theil-sens slopes for lower (left) and upper (right) confidence interval. Color indicate calculated linear trend for binned particle number concentration at Aspveten as particle $\text{cm}^{-3} \text{year}^{-1}$ for the time period 2000-2017. Daily averaged data was used for calculation of Theil-Sens's slope. Areas enclosed by the dashed red line represents pairs of month/size bin where test for significance failed.