

Supplement of Atmos. Chem. Phys., 19, 14329–14338, 2019
<https://doi.org/10.5194/acp-19-14329-2019-supplement>
© Author(s) 2019. This work is distributed under
the Creative Commons Attribution 4.0 License.



Supplement of

Wintertime aerosol properties in Beijing

Misti Levy Zamora et al.

Correspondence to: Min Hu (minhu@pku.edu.cn) and Renyi Zhang (renyi-zhang@tamu.edu)

The copyright of individual parts of the supplement might differ from the CC BY 4.0 License.

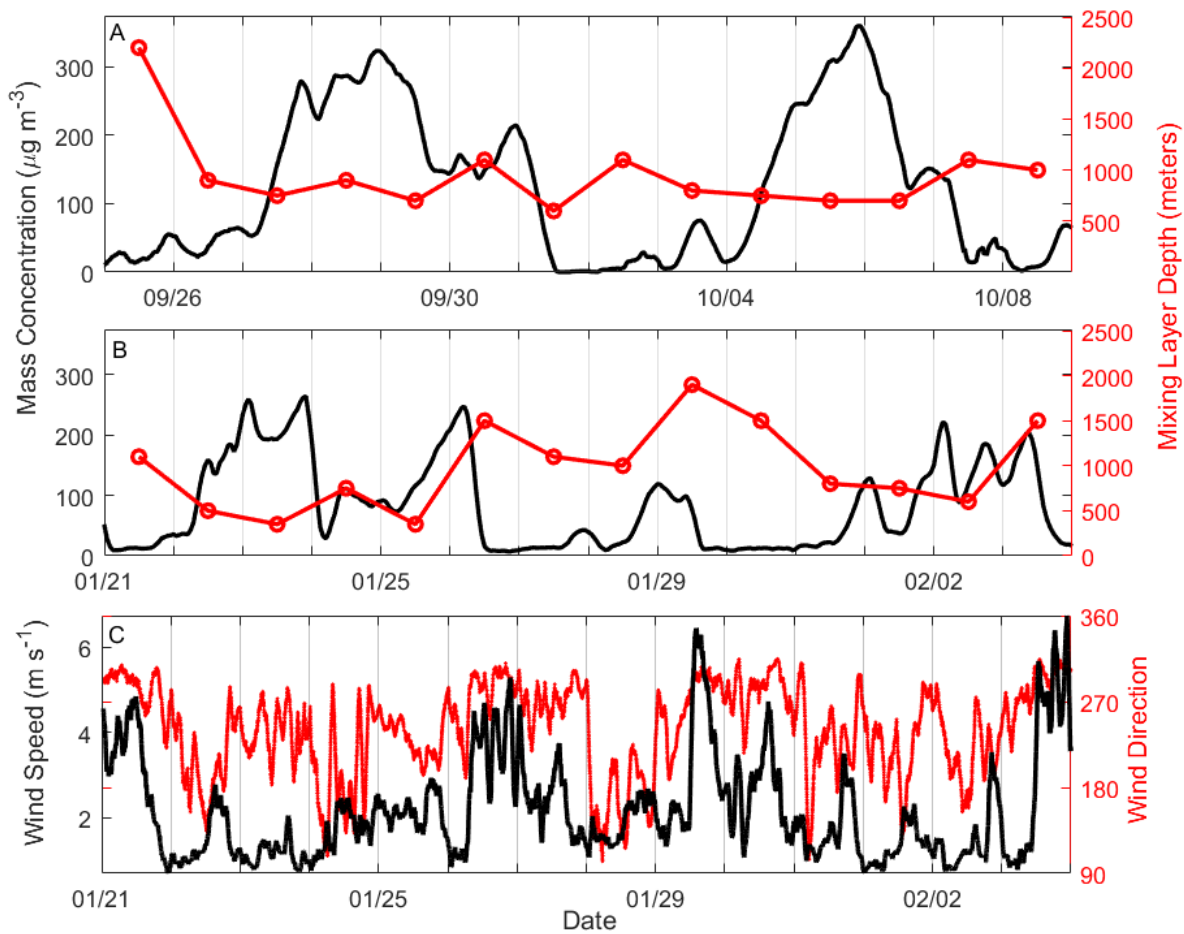


Figure S1. (A and B) Comparison of the mixing layer depth (m) determined by the HYSPLIT model and the mass concentration ($\mu\text{g m}^{-3}$) in (A) Autumn 2013 and (B) Winter 2015. (C) Wind direction (Red line) and speed (black line) at the sampling site

5 in winter 2015.