

Supplement of Atmos. Chem. Phys., 19, 1373–1391, 2019
<https://doi.org/10.5194/acp-19-1373-2019-supplement>
© Author(s) 2019. This work is distributed under
the Creative Commons Attribution 4.0 License.



Supplement of

First measurement of atmospheric mercury species in Qomolangma Natural Nature Preserve, Tibetan Plateau, and evidence of transboundary pollutant invasion

Huiming Lin et al.

Correspondence to: Yindong Tong (yindongtong@tju.edu.cn) and Xuejun Wang (wangxuejun@pku.edu.cn)

The copyright of individual parts of the supplement might differ from the CC BY 4.0 License.

1 **Figure List**

2 Figure S1. Monitoring instrument platform in sunny and snowy, respectively;

3 Figure S2. Comparison of GEM, GOM and PBM concentrations during the PISM and the ISM
4 period. GEM concentrations increased significantly with the development of the ISM ($p < 0.001$
5 between ISM1 and ISM4), while decreases of GOM and PBM concentrations were observed
6 during the study period ($p < 0.001$, between ISM1 and ISM5), with a decrease of 37.9% (the
7 average concentration change from 20.3 pg m^{-3} to 12.6 pg m^{-3}) and 48.1% (the average
8 concentration change from 21.2 pg m^{-3} to 11.0 pg m^{-3}), respectively.

9 Figure S3. Diurnal variation of GEM, GOM and PBM during PISM and ISM1-5 period. Mean
10 concentration and 95% confidence interval of the mean value are presented.

11 Figure S4. Changes of Snow Cover percentage (data from MODIS, MOD10A1) during the study
12 period.

13 Figure S5. Fire hotspots distribution from PISM and ISM (1-5) periods. The yellow dots represent
14 the fire hotspot events. The background fill colors represent the population density.

15

16

17 **Figure S1**

18



19

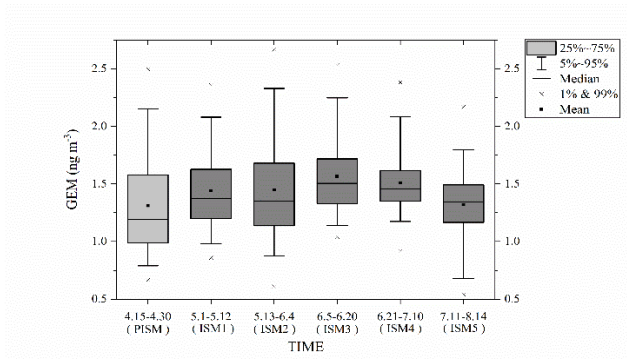
20

21

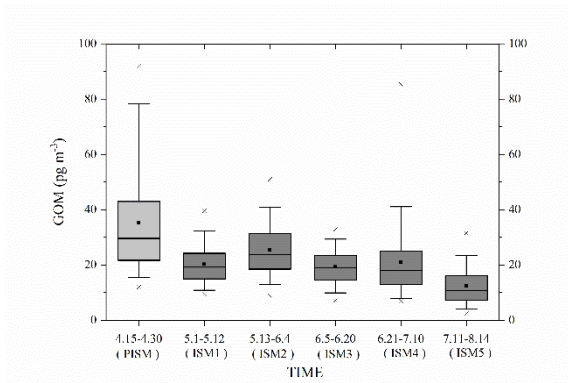
22

23 **Figure S2**

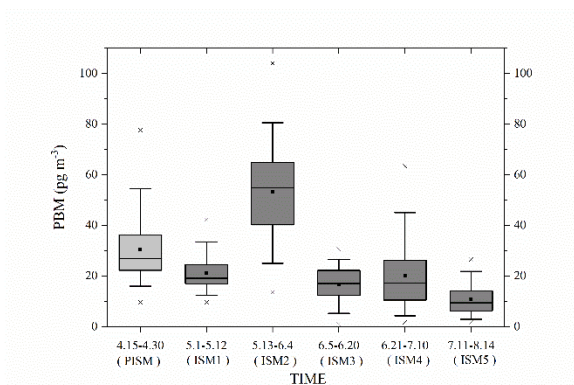
24



25



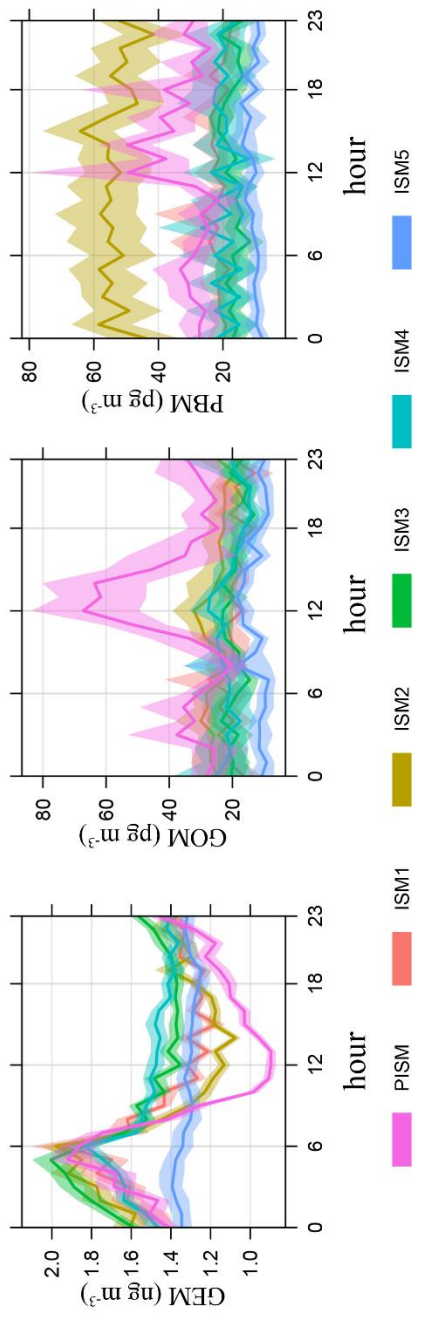
26



27

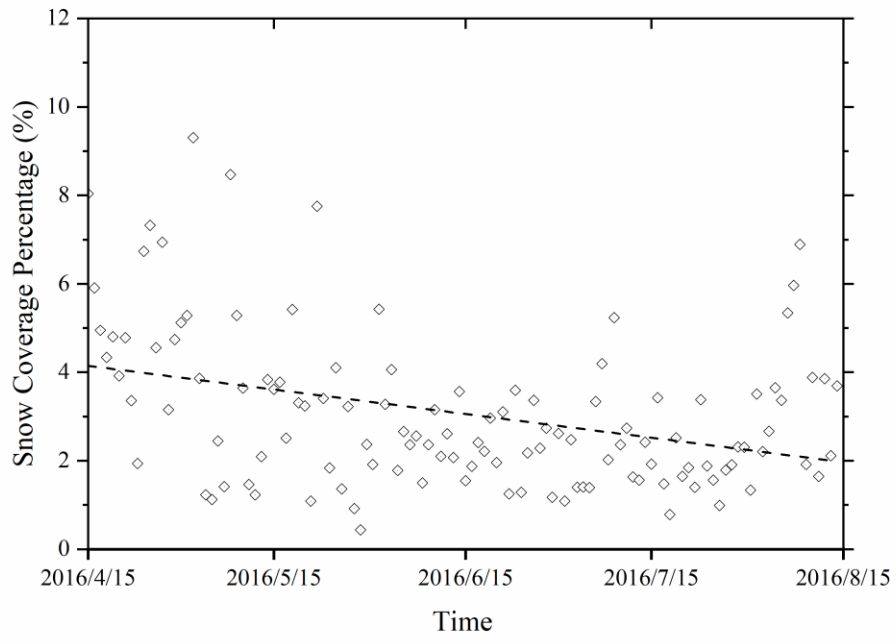
28

29 **Figure S3**



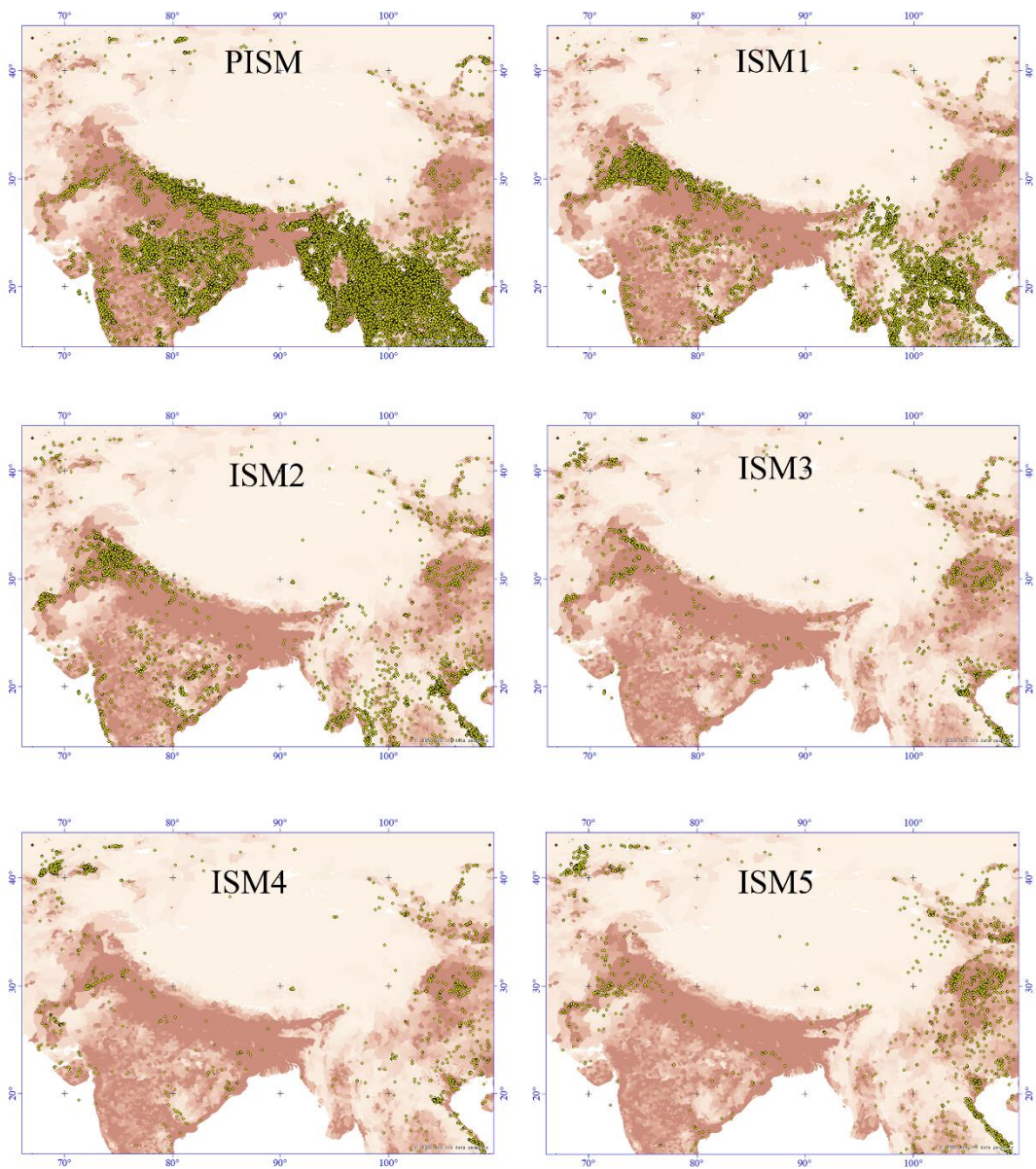
30
31

32 **Figure S4**



33
34

35 **Figure S5**



36

37