



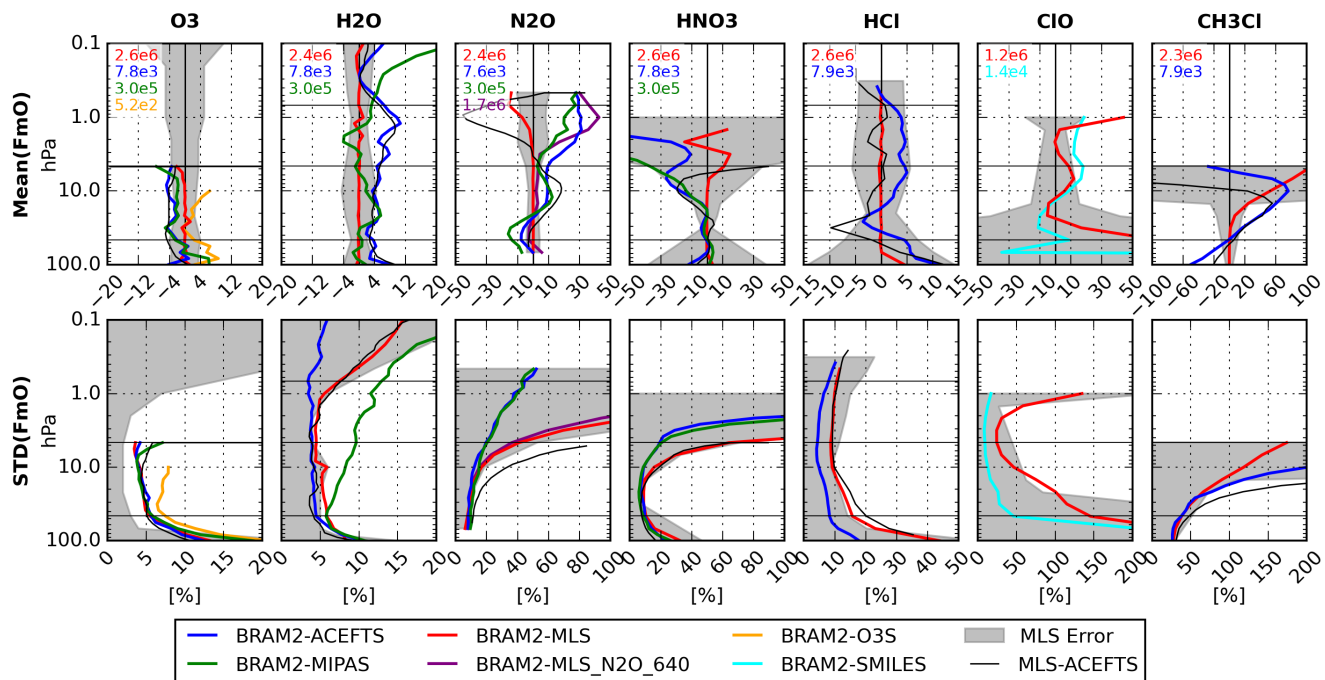
*Supplement of*

## **Technical note: Reanalysis of Aura MLS chemical observations**

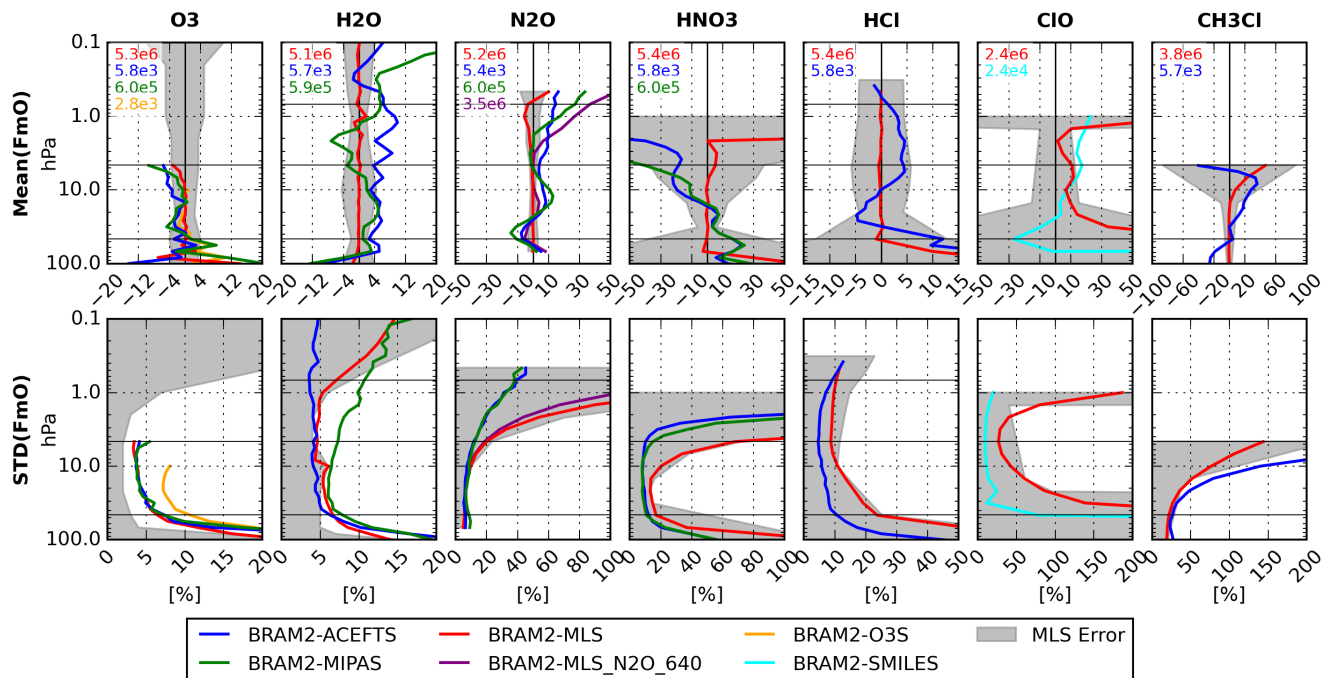
**Quentin Errera et al.**

*Correspondence to:* Quentin Errera ([quentin.errera@aeronomie.be](mailto:quentin.errera@aeronomie.be))

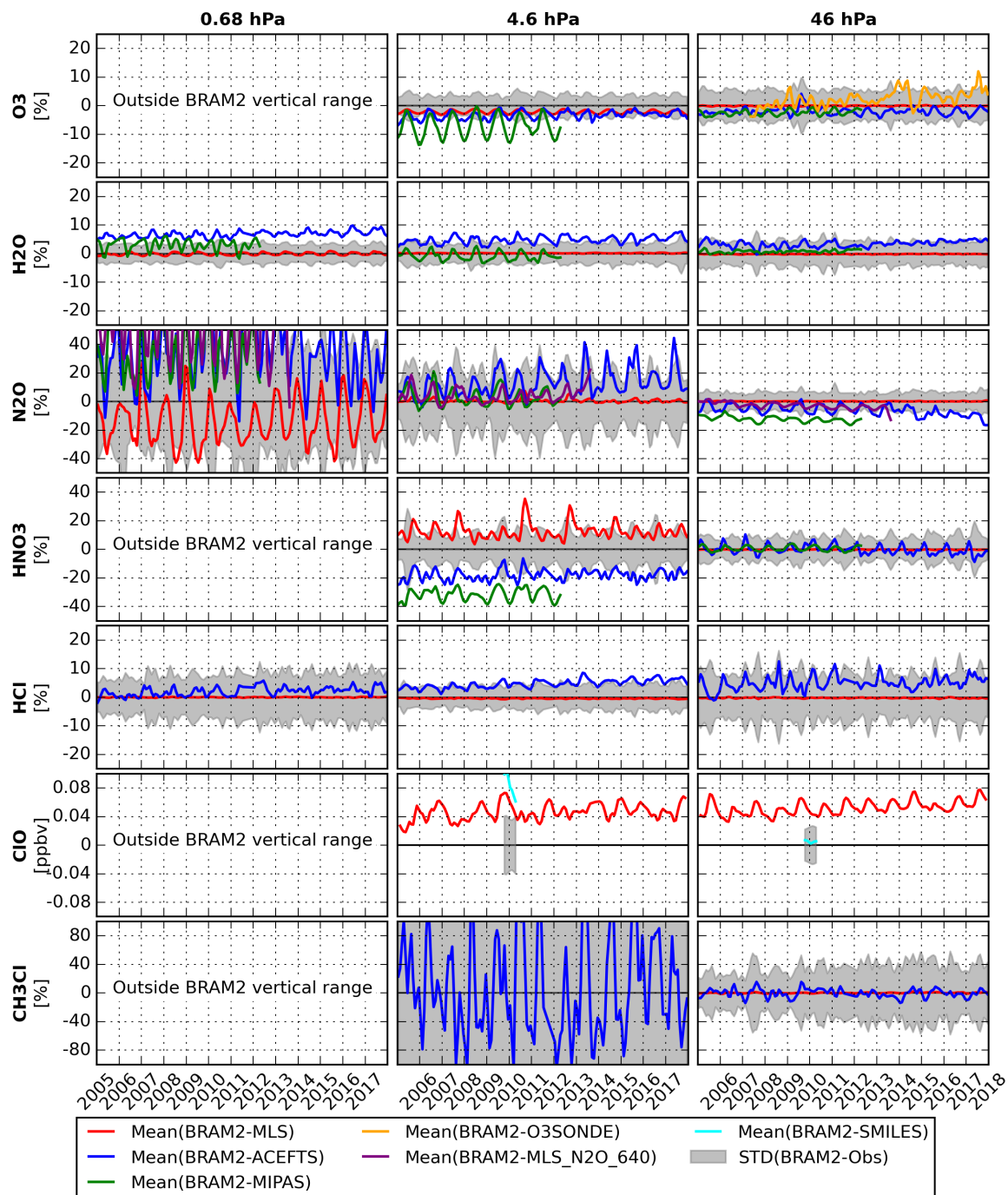
The copyright of individual parts of the supplement might differ from the CC BY 4.0 License.



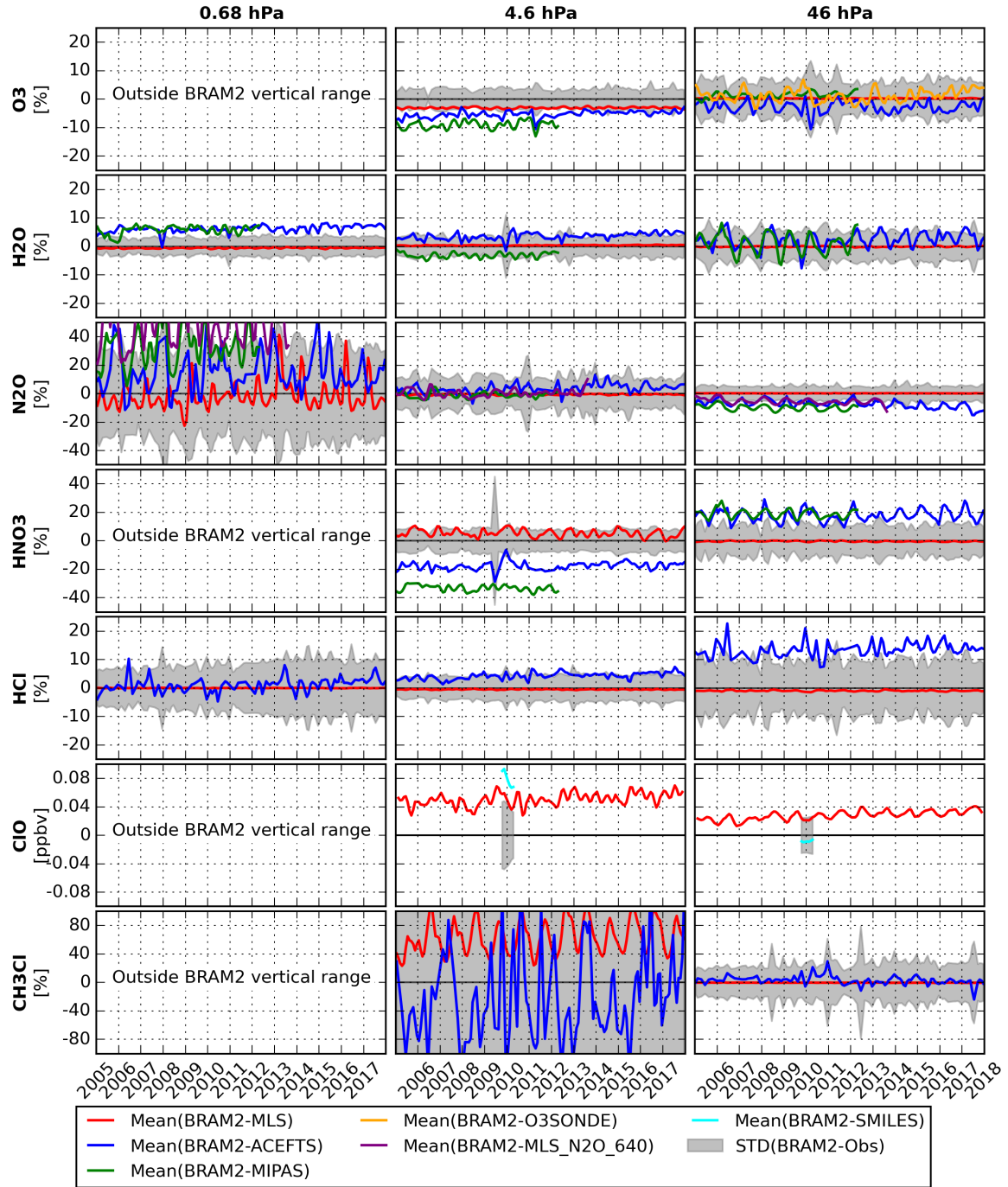
**Figure S1.** As Fig. 5 but between 60°S-30°S.



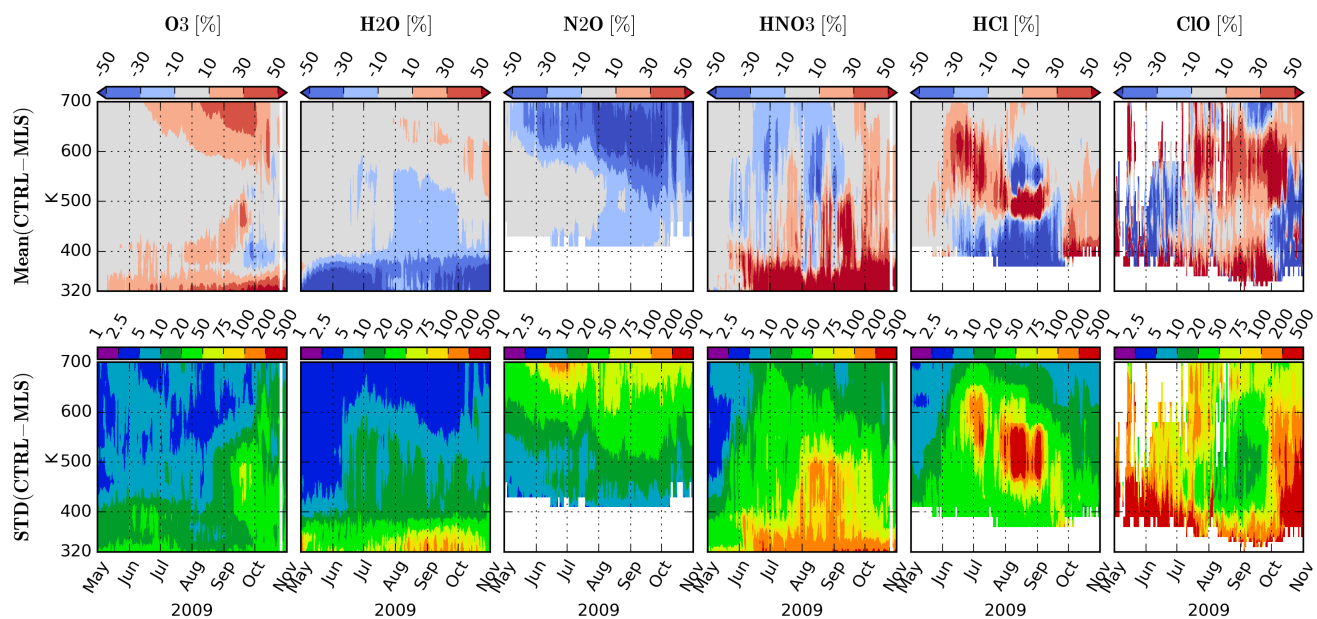
**Figure S2.** As Fig. 5 but between 30°S-30°N.



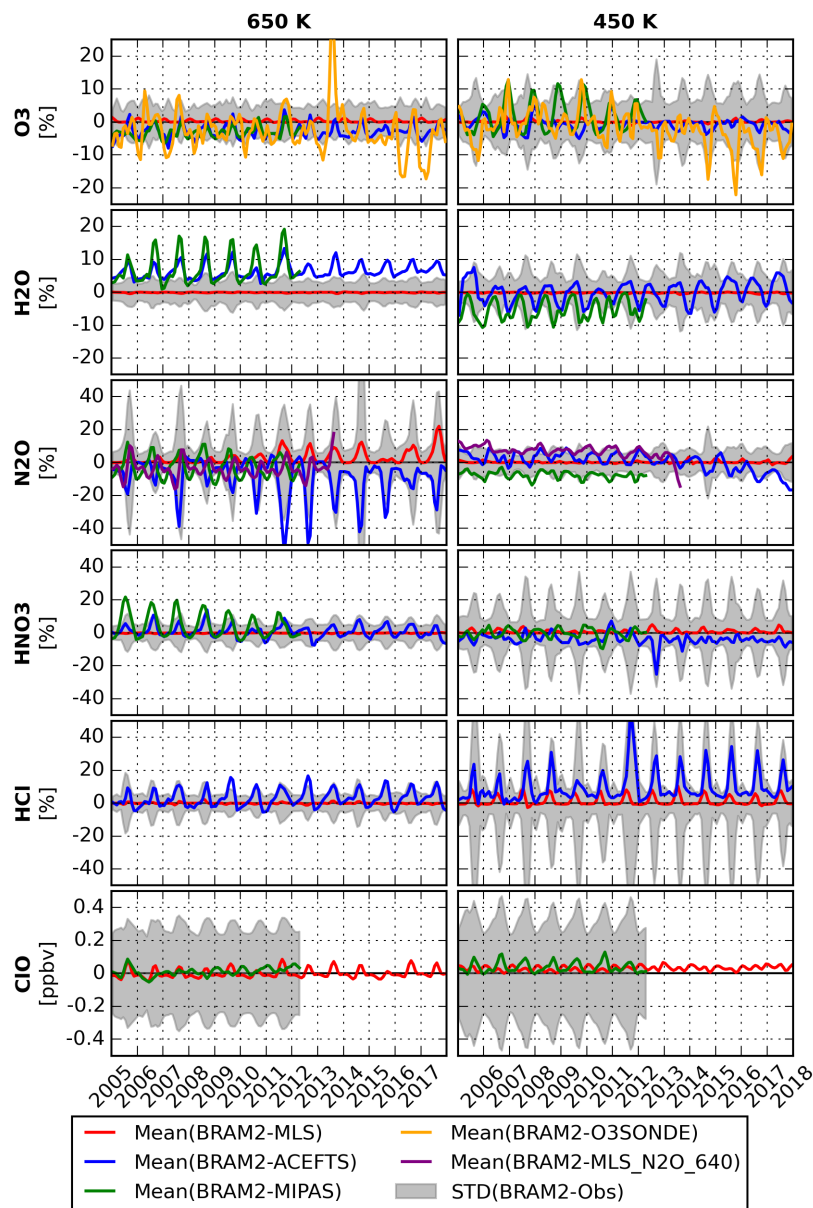
**Figure S3.** As Fig. 6 but between 60°S-30°S.



**Figure S4.** As Fig. 6 but between 30°S-30°N.

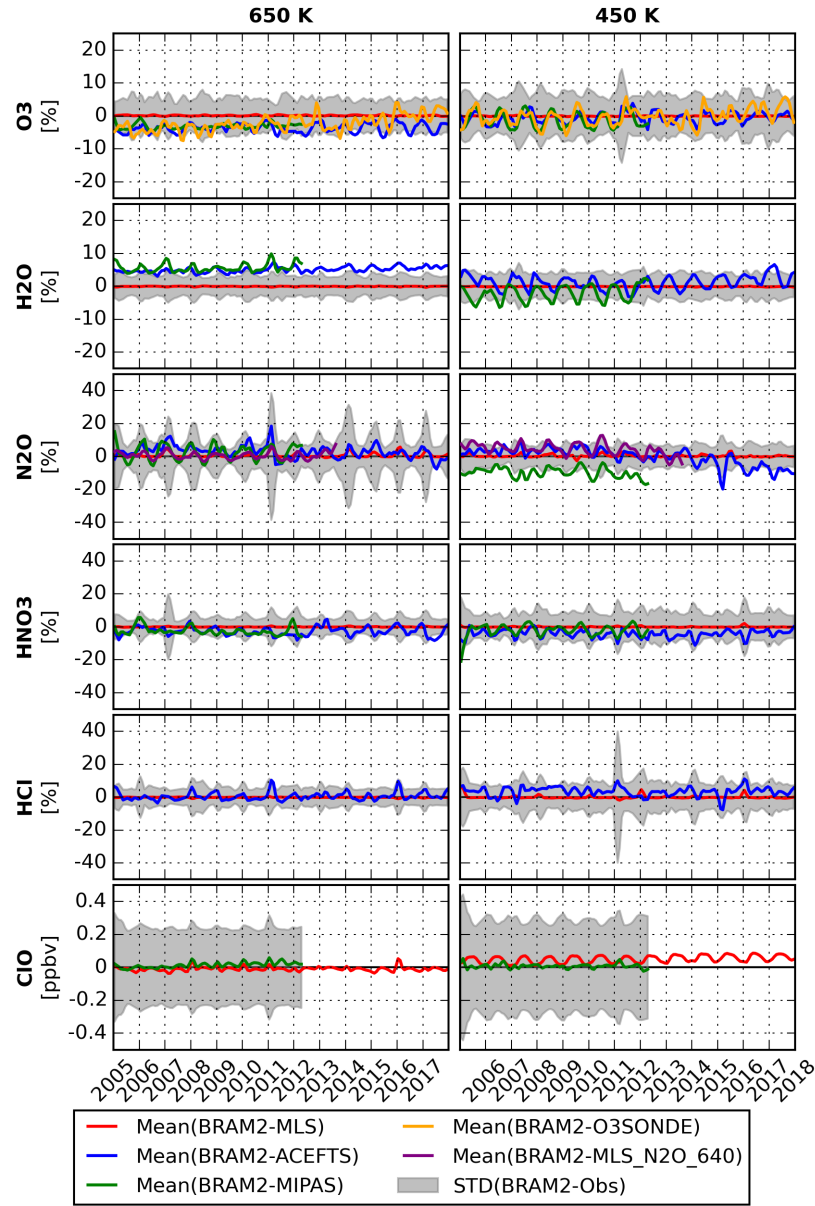


**Figure S5.** Mean (top) and standard deviations (bottom) of the difference (CTRL-MLS) for the conditions shown in Fig. 7.

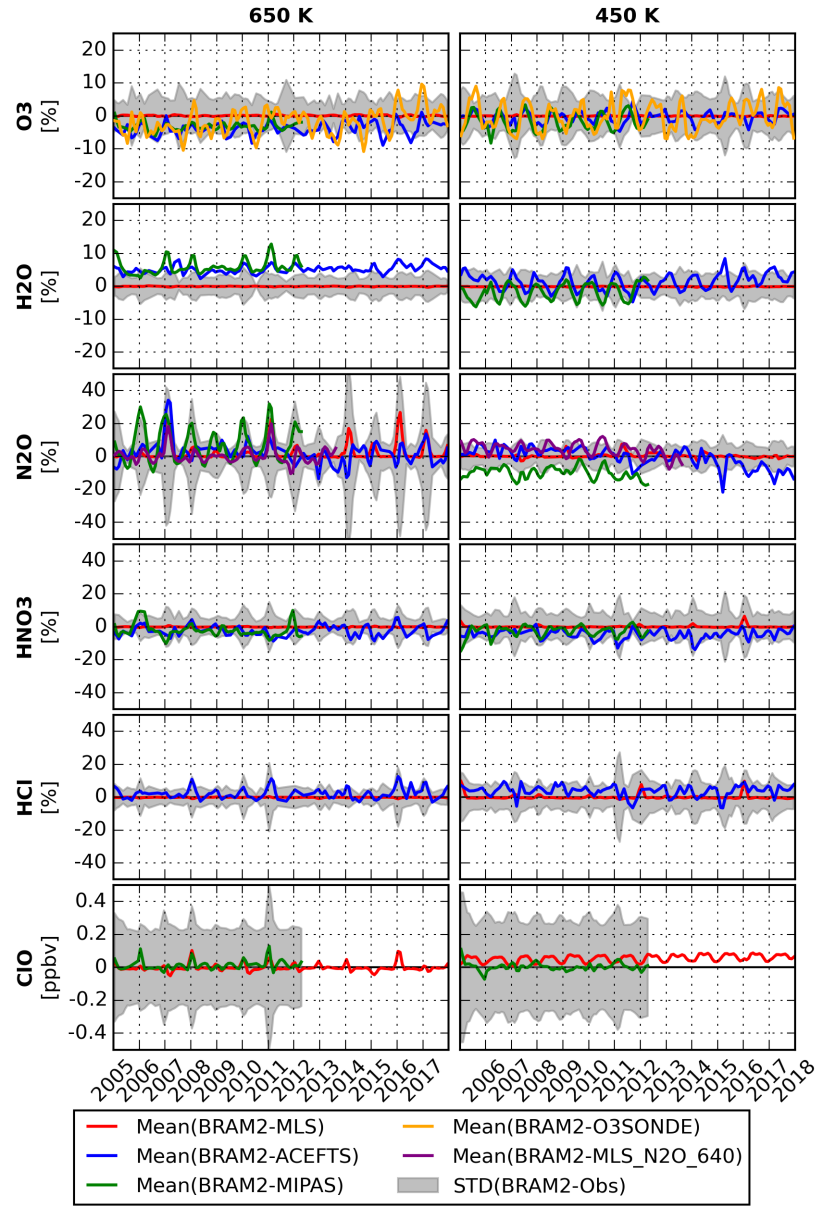


**Figure S6.** As Fig. 8 but in the outer Antarctic polar vortex between (75°S-60°S of equivalent latitude).



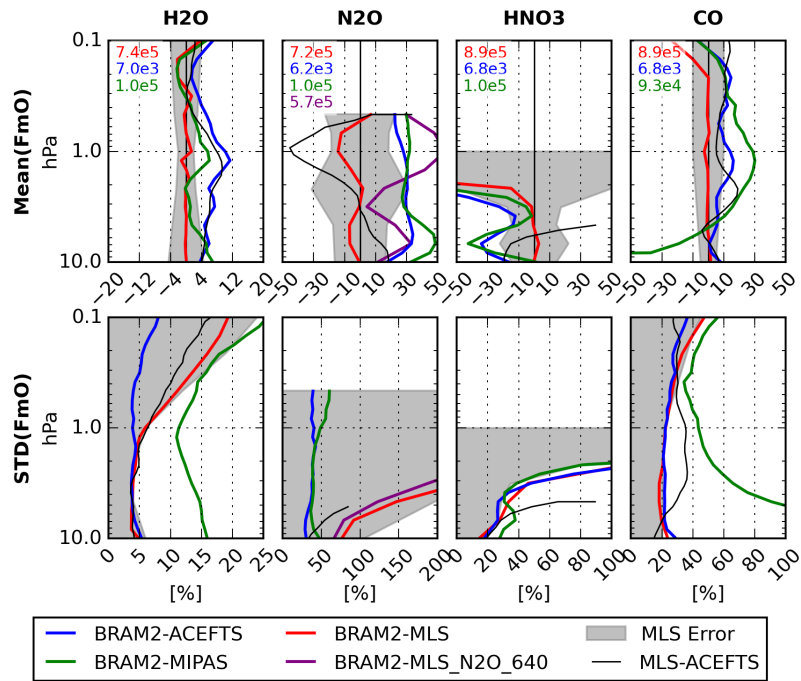


**Figure S7.** As Fig. 8 but in the outer Arctic polar vortex between (60°N-75°N of equivalent latitude).

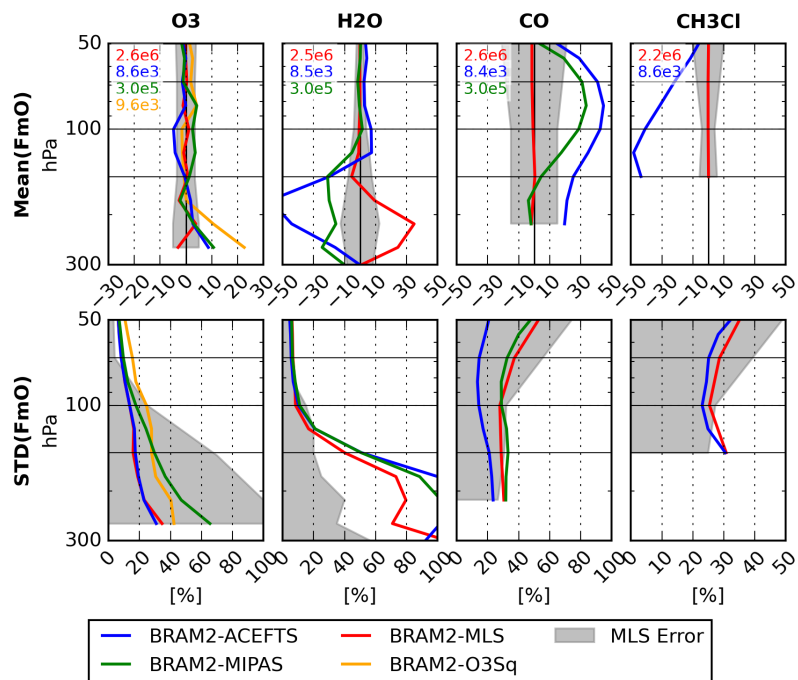


**Figure S8.** As Fig. 8 but in the outer Arctic polar vortex between (75°N-90°N of equivalent latitude).

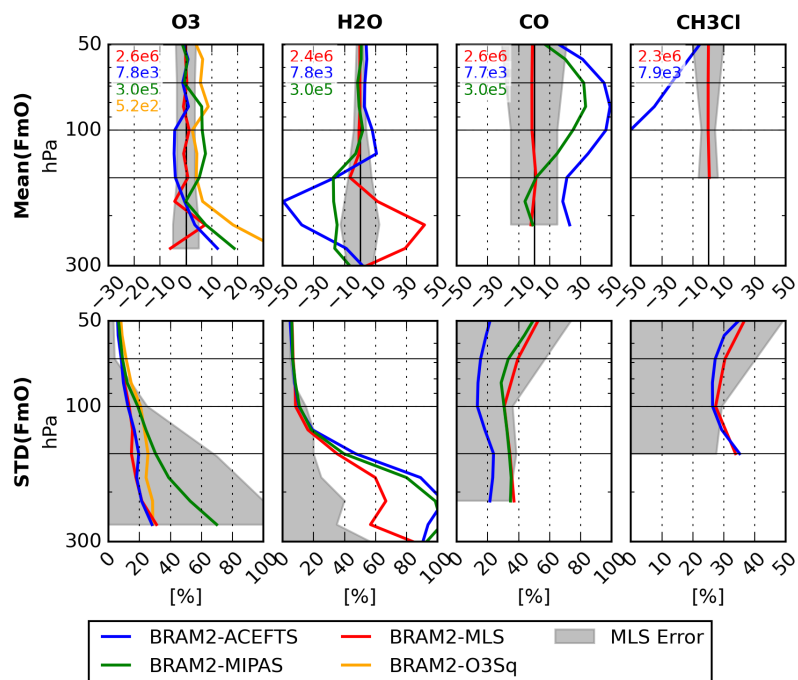




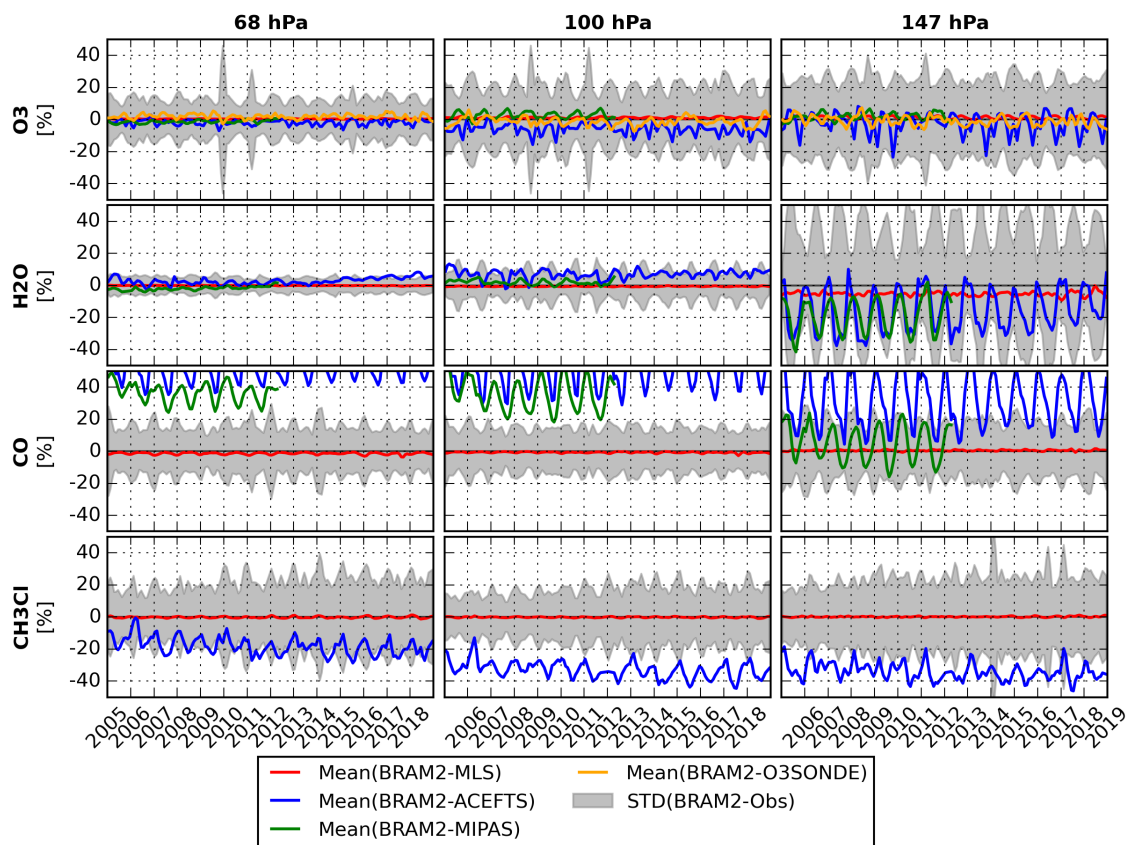
**Figure S9.** As Fig. 10 but between 90°S-60°S.



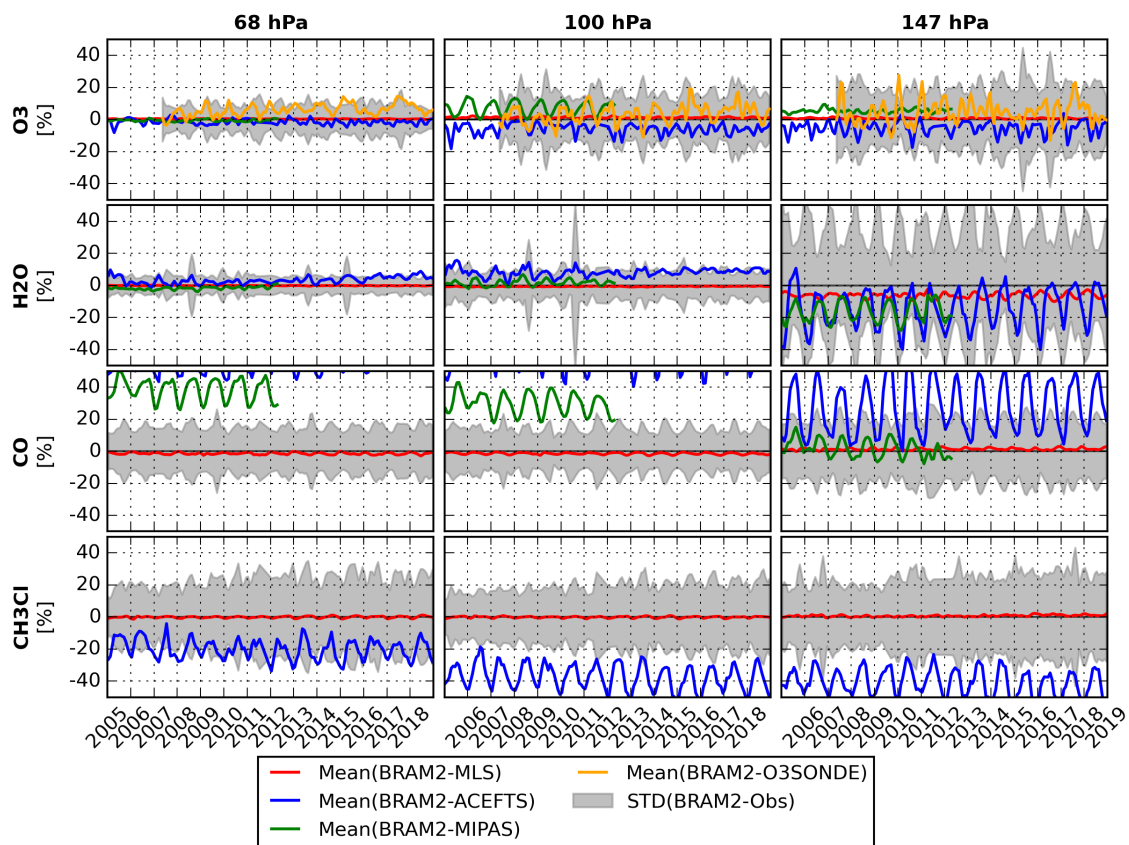
**Figure S10.** As Fig. 12 but between 30°N-60°N.



**Figure S11.** As Fig. 12 but between 60°S-30°S.



**Figure S12.** As Fig. 12 but between 30°N-60°N.



**Figure S13.** As Fig. 13 but between 60°S-30°S.

**Table S1.** Mean difference and standard deviation between BRAM2 and observations for the 2005-2017 period at three typical levels in the ex-UTLS: 68, 100 and 147 hPa. Values are in %, normalized by BRAM2. Abbreviations: Not Assimilated (N. A.).

Species	Instruments	68 hPa	100hPa	147 hPa
O <sub>3</sub>	MLS	$0 \pm 8 \%$	$1 \pm 13 \%$	$1 \pm 16 \%$
	ACE-FTS	$-2 \pm 8 \%$	$-5 \pm 13 \%$	$-1 \pm 17 \%$
	MIPAS	$-1 \pm 9 \%$	$4 \pm 17 \%$	$1 \pm 30 \%$
	O3sondes	$2 \pm 15 \%$	$-2 \pm 25 \%$	$-1 \pm 28 \%$
H <sub>2</sub> O	MLS	$0 \pm 7 \%$	$-1 \pm 8 \%$	$-5 \pm 40 \%$
	ACE-FTS	$2 \pm 6 \%$	$7 \pm 10 \%$	$-20 \pm 50 \%$
	MIPAS	$-2 \pm 6 \%$	$1 \pm 11 \%$	$-20 \pm 50 \%$
CO	MLS	$-1 \pm 35 \%$	$-1 \pm 28 \%$	$0 \pm 29 \%$
	ACE-FTS	$40 \pm 14 \%$	$42 \pm 14 \%$	$25 \pm 22 \%$
	MIPAS	$30 \pm 33 \%$	$30 \pm 28 \%$	$5 \pm 33 \%$
CH <sub>3</sub> Cl	MLS	$0 \pm 30 \%$	$0 \pm 25 \%$	$0 \pm 30 \%$
	ACE-FTS	$-20 \pm 25 \%$	$-40 \pm 23 \%$	$-45 \pm 30 \%$