



Supplement of

Single-particle characterization of aerosols collected at a remote site in the Amazonian rainforest and an urban site in Manaus, Brazil

Li Wu et al.

Correspondence to: Chul-Un Ro (curo@inha.ac.kr)

The copyright of individual parts of the supplement might differ from the CC BY 4.0 License.

Figure S1. Typical SEM images of aerosol particles for stage 1 (PM_{0.25-0.5}), stage 2 (PM_{0.5-1.0}), and stage 3 (PM_{1.0-2.0}) samples of SA1 collected on Apr. 1, 2012 at the ATTO site. For convenience, ammonium sulfate, secondary organic aerosol, aluminosilicates, and reacted sea-salt are denoted as “AS”, “SOA”, “AlSi” and “rss”, respectively.

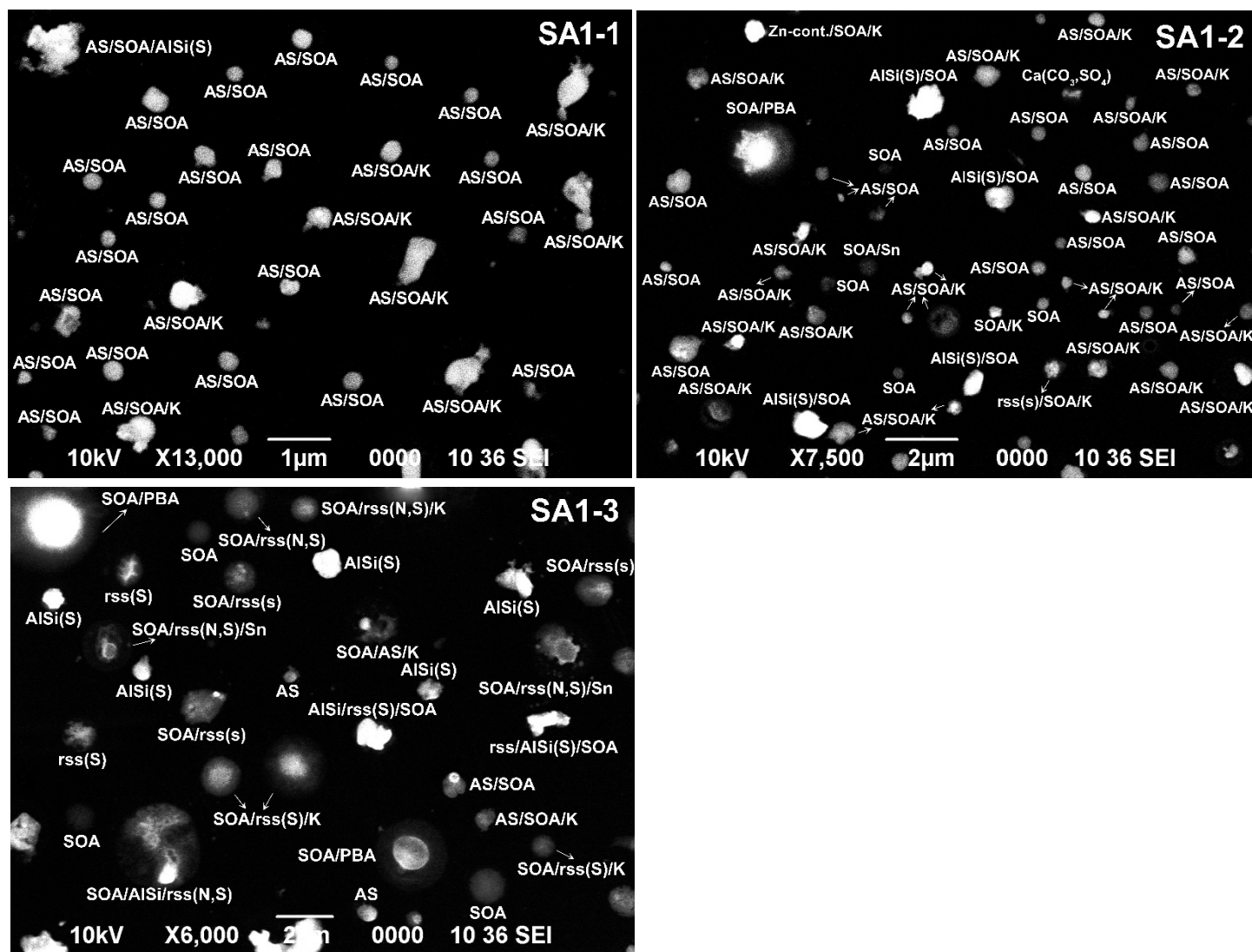


Figure S2. Typical SEM images of aerosol particles for stage 1 ($PM_{0.25-0.5}$), stage 2 ($PM_{0.5-1.0}$), and stage 3 ($PM_{1.0-2.0}$) samples of SA2 collected on Apr. 16, 2012 at the ATTO site.

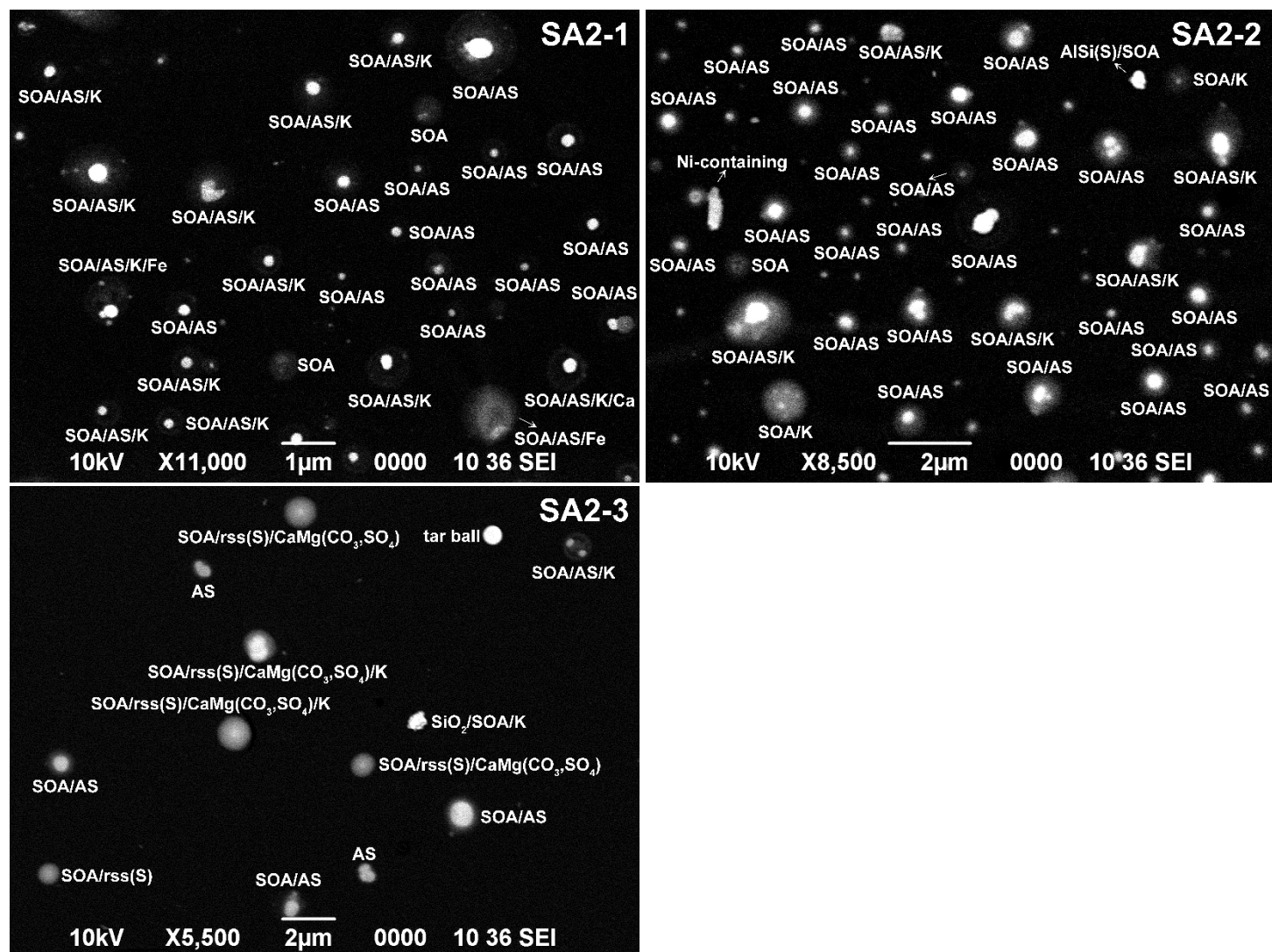
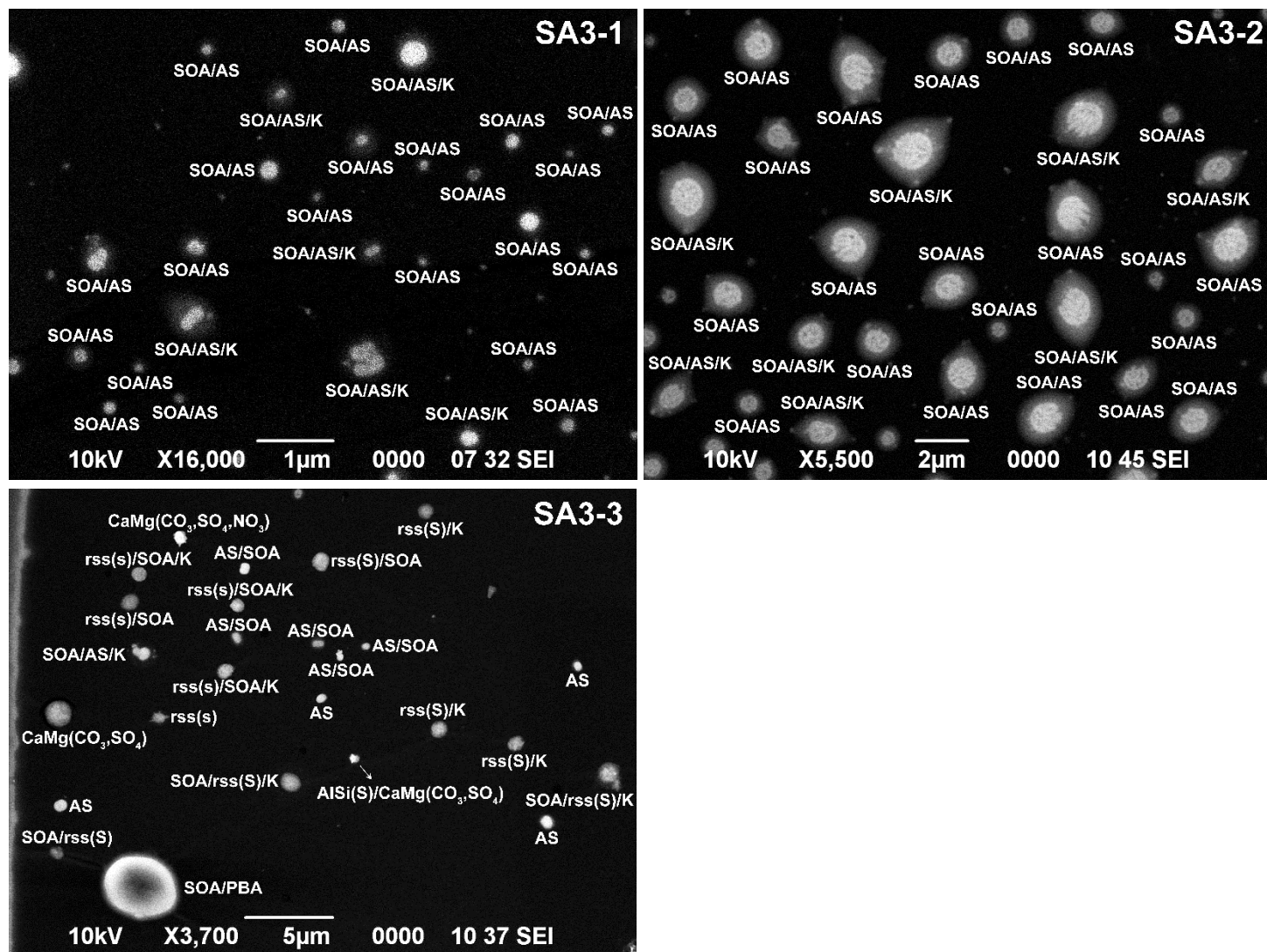


Figure S3. Typical SEM images of aerosol particles for stage 1 ($PM_{0.25-0.5}$), stage 2 ($PM_{0.5-1.0}$), and stage 3 ($PM_{1.0-2.0}$) samples of SA3 collected on Apr. 17, 2012 at the ATTO site.



SA4-1
10kV X15,000 4μm 0000 10 36 SEI

SA4-2
10kV X5,000 5μm 0000 10 36 SEI

SA4-3
10kV X4,000 5μm 0000 10 36 SEI

SA4-4
10kV X2,200 10μm 0000 10 36 SEI

[illegible]

[illegible]

Figure S7. Typical SEM images of aerosol particles for the stage 1 ($PM_{0.25-0.5}$), stage 2 ($PM_{0.5-1.0}$), and stage 3 ($PM_{1.0-2.0}$) samples of SM3 collected on May. 3, 2012 at the Manaus site.

