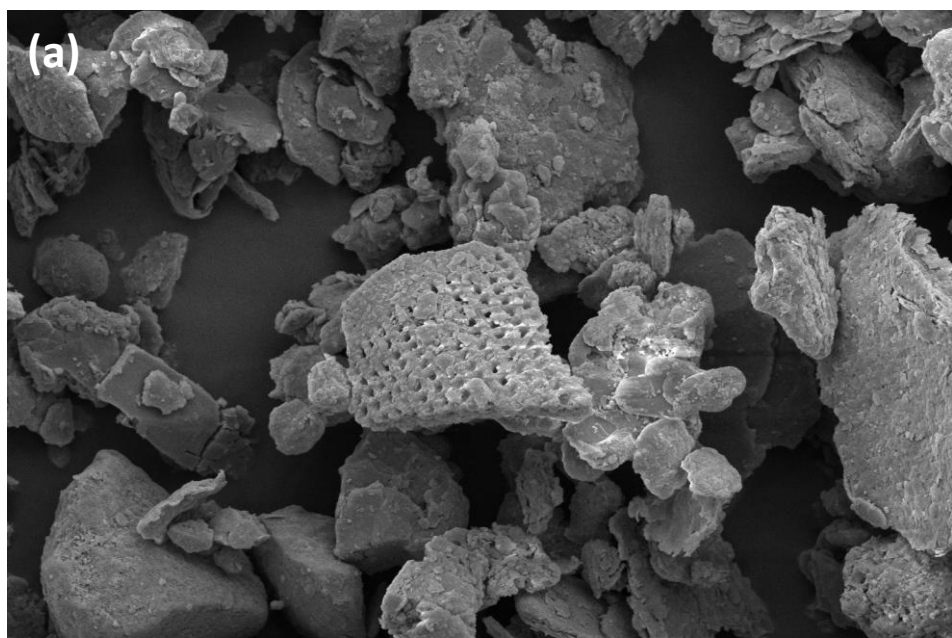


(a)

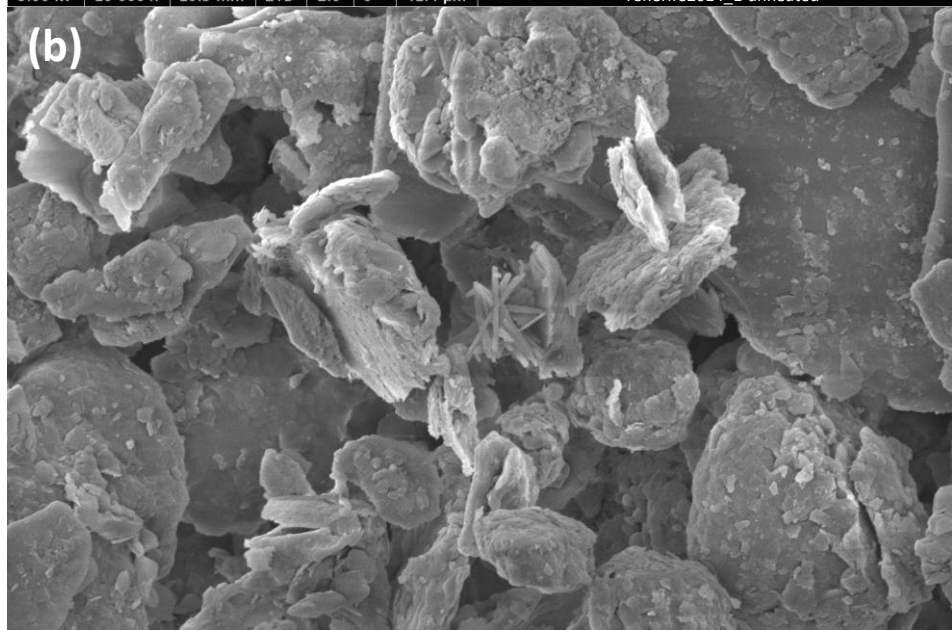


HV	mag	WD	det	spot	tilt	HFV
5.00 kV	10 000 x	10.3 mm	ETD	2.0	0 °	41.4 μm

10 μm

Tenerife2014_1 unheated

(b)



HV	mag	WD	det	spot	tilt	HFV
5.00 kV	20 000 x	10.5 mm	ETD	2.0	0 °	20.7 μm

5 μm

Tenerife2014_1 heated