

Supplement of Atmos. Chem. Phys., 19, 10571–10589, 2019
<https://doi.org/10.5194/acp-19-10571-2019-supplement>
© Author(s) 2019. This work is distributed under
the Creative Commons Attribution 4.0 License.



Supplement of

Arctic clouds in ECHAM6 and their sensitivity to cloud microphysics and surface fluxes

Jan Kretzschmar et al.

Correspondence to: Jan Kretzschmar (jan.kretzschmar@uni-leipzig.de)

The copyright of individual parts of the supplement might differ from the CC BY 4.0 License.

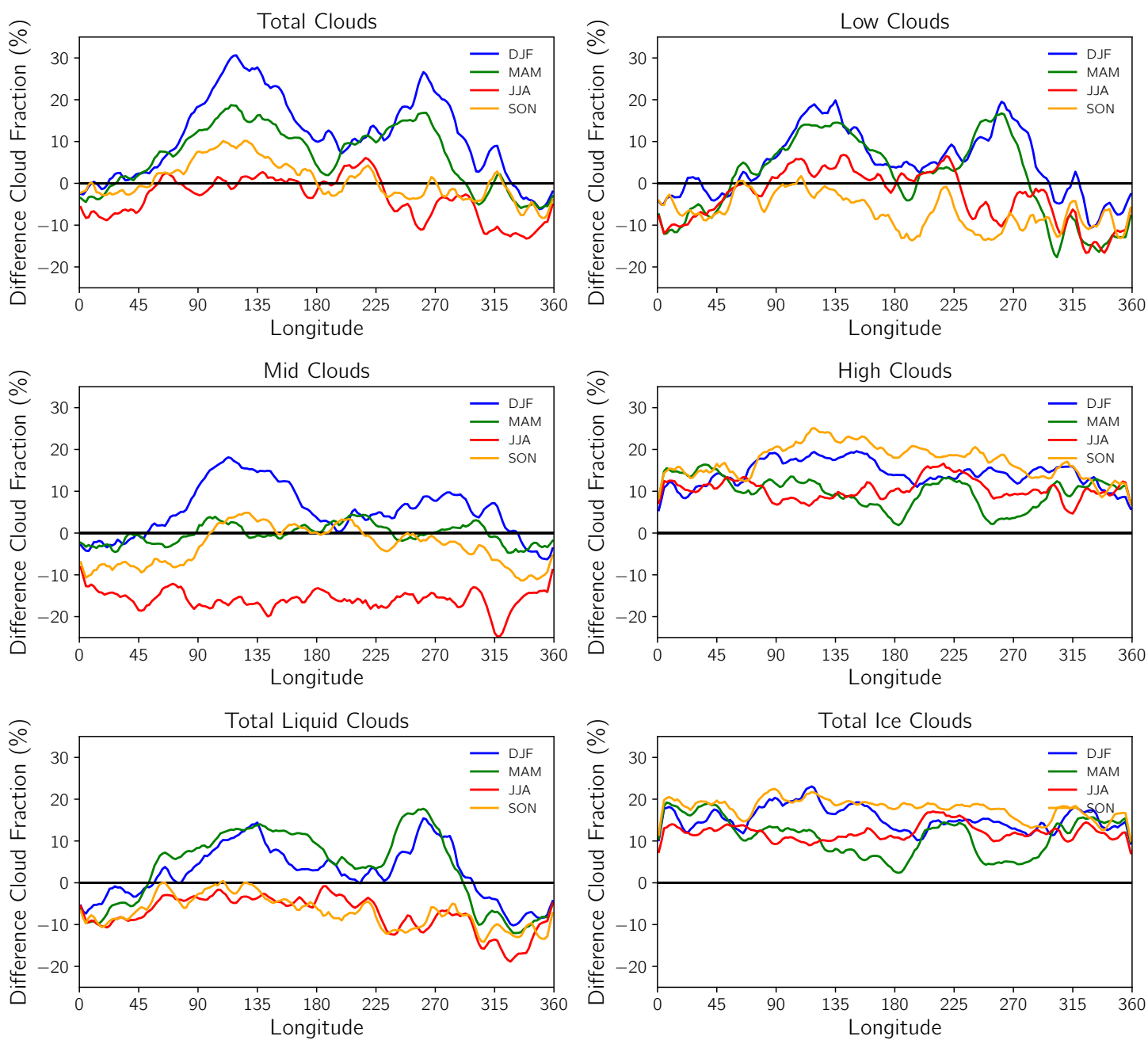


Figure S1: Meridional mean (60° N to 82° N) difference in cloud cover (model - satellite) between ECHAM6 + COSP and CALIPSO for total, low, mid and high clouds as well as difference in total liquid and total ice cloud cover for 2007 to 2011.

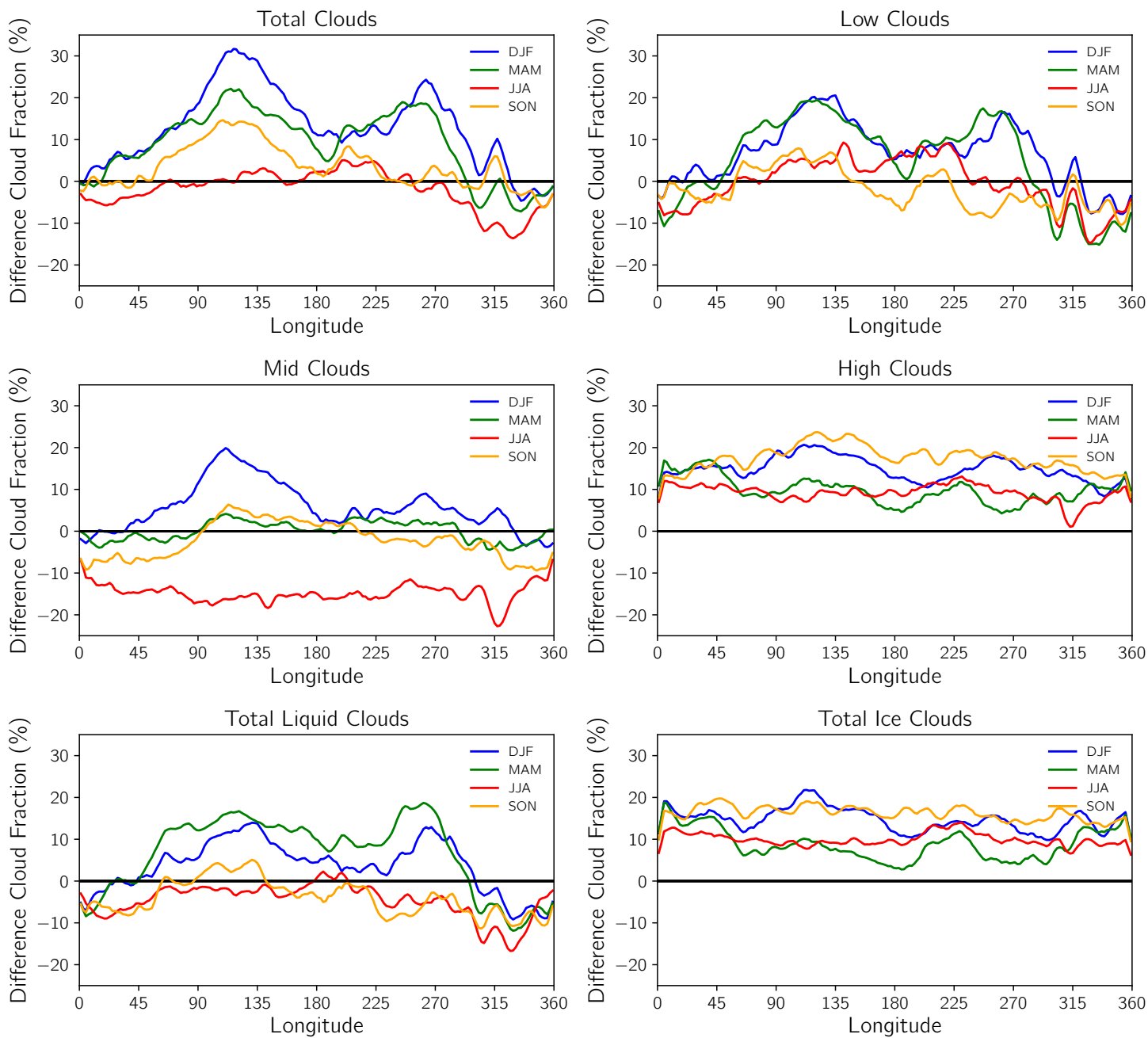


Figure S2: As Figure S1 but for the period from 2008 to 2012.

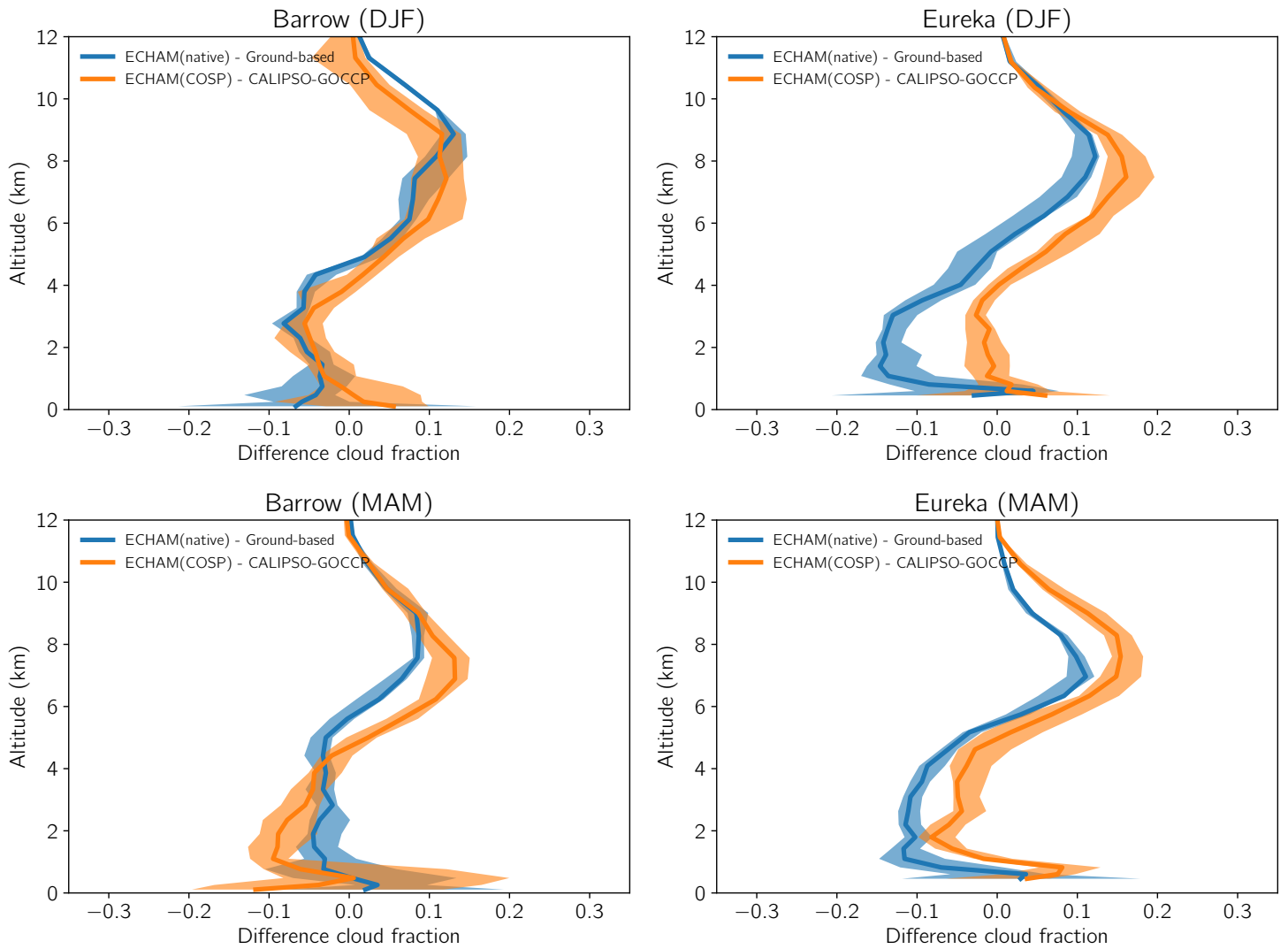


Figure S3: Cloud fraction profile differences evaluated for gridpoints on a 3×3 grid around the respective station. The solid line represents the median of the differences on the 3×3 grid while the shaded area shows the range between the maximum and the minimum difference.

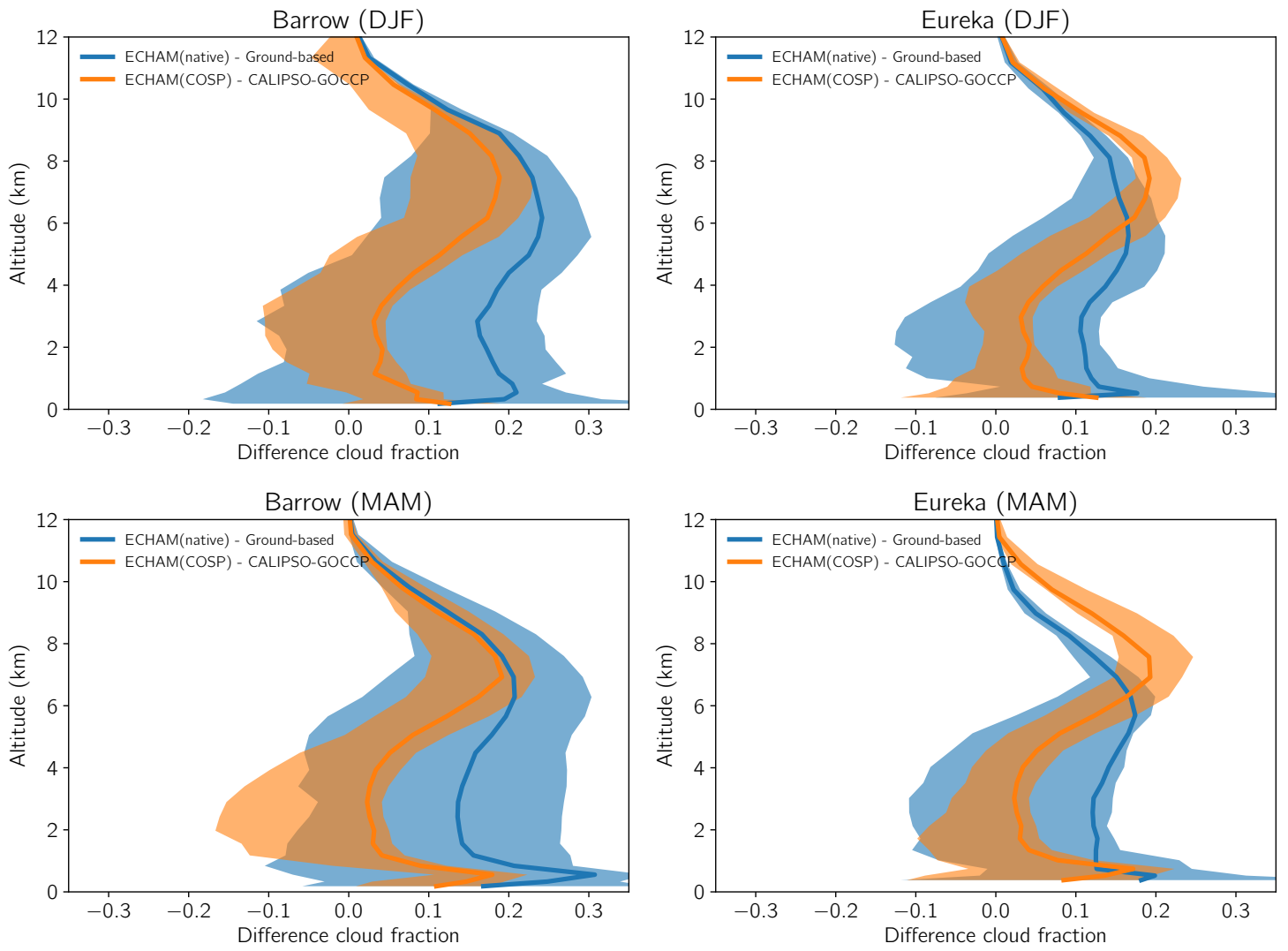


Figure S4: As Figure S3 but for a 5×5 grid around the respective station.