

Supplement of Atmos. Chem. Phys., 18, 8929–8952, 2018  
<https://doi.org/10.5194/acp-18-8929-2018-supplement>  
© Author(s) 2018. This work is distributed under  
the Creative Commons Attribution 4.0 License.



*Supplement of*

**Influence of anthropogenic emissions and boundary conditions on multi-model simulations of major air pollutants over Europe and North America in the framework of AQMEII3**

Ulas Im et al.

*Correspondence to:* Ulas Im (ulas@envs.au.dk)

The copyright of individual parts of the supplement might differ from the CC BY 4.0 License.

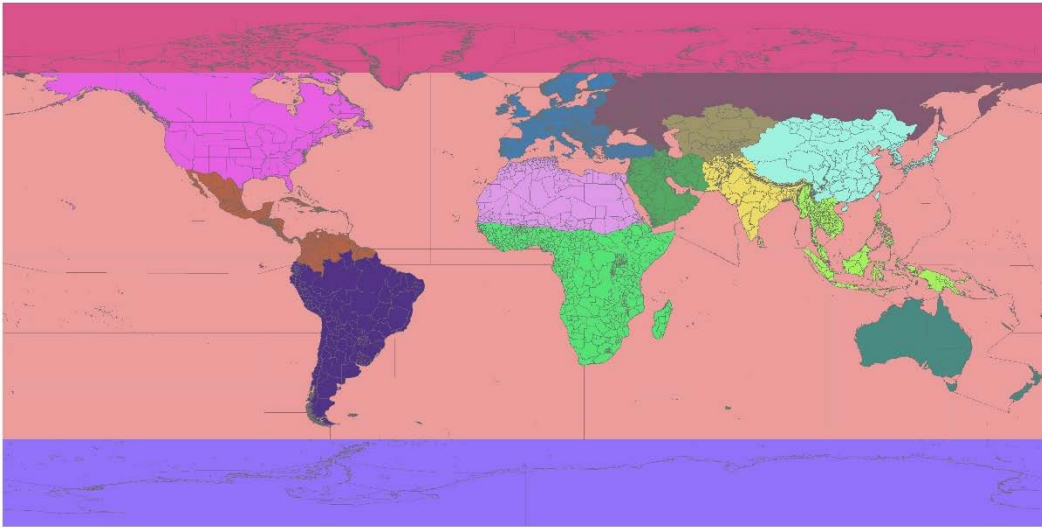


Fig. S1. The HTAP2 regions of source/receptor areas (Taken from Galmarini et al. (2017))

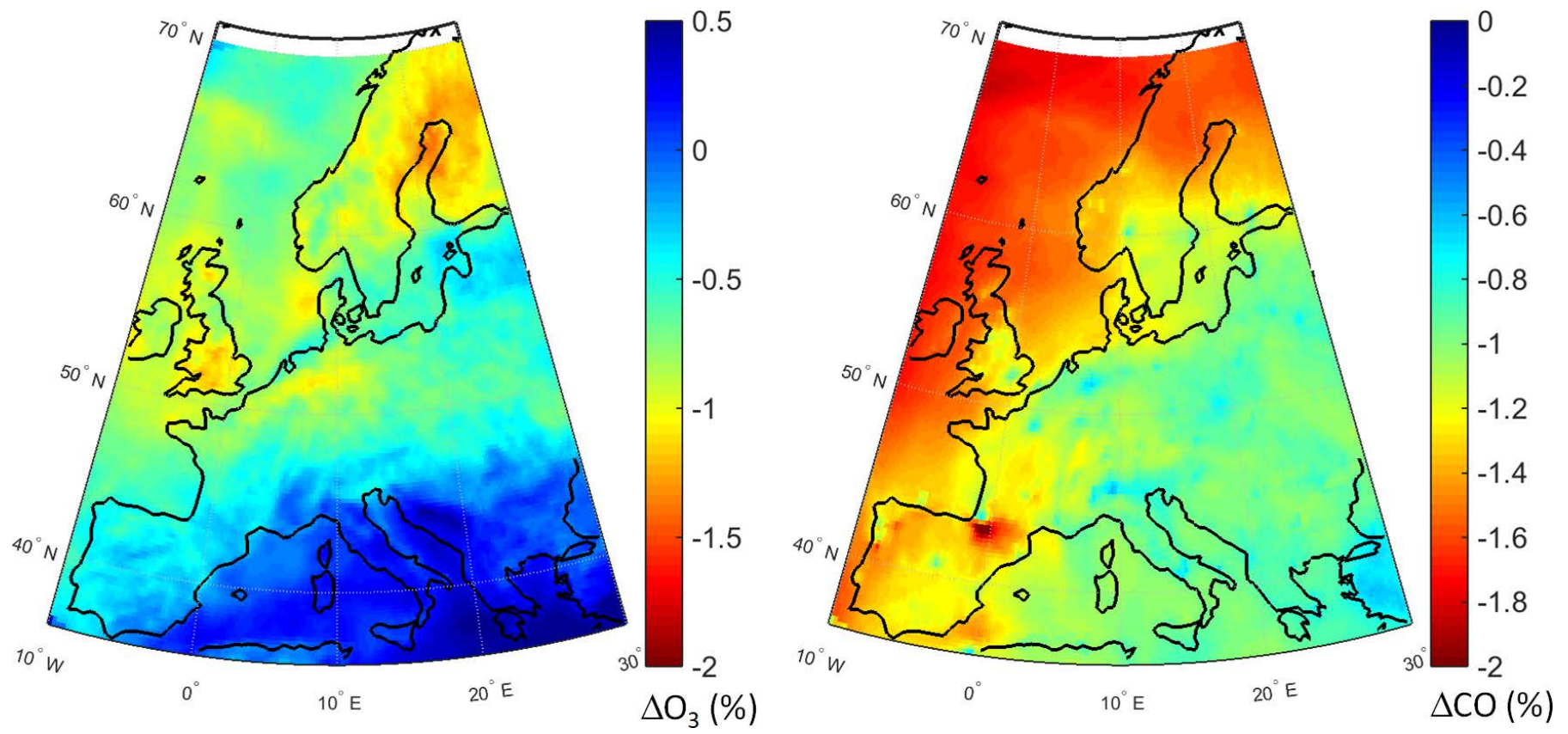


Fig. S2. Response of European springtime  $O_3$  and  $CO$  levels to the 20% reduction if the North American anthropogenic emissions (NAM)

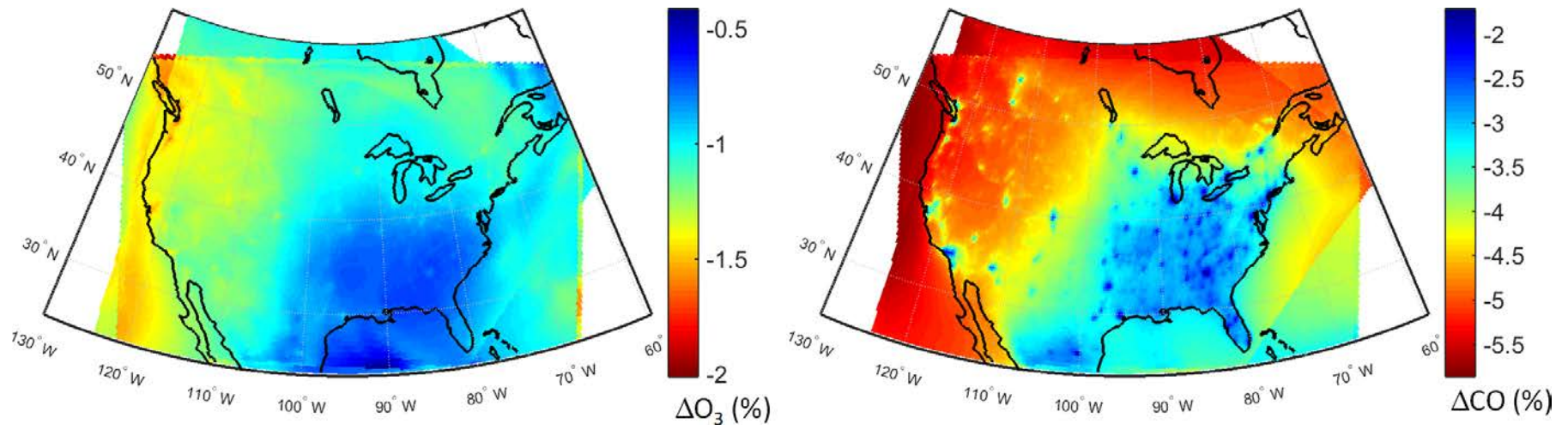


Fig. S3. Response of European springtime O<sub>3</sub> and CO levels to the 20% reduction in the East Asian anthropogenic emissions (EAS).