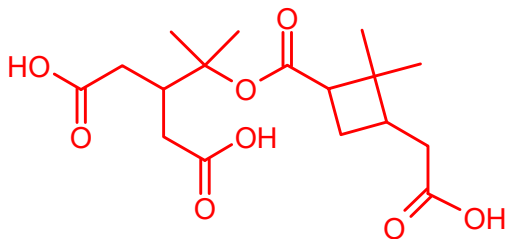
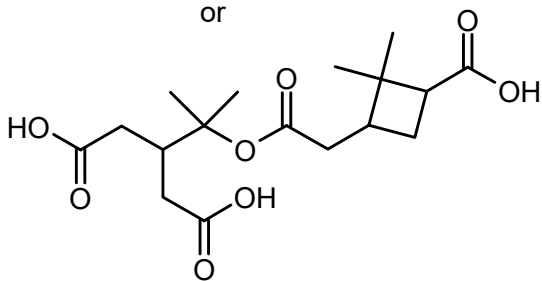


MW 358 (C₁₇H₂₆O₈)

Nonderivatized

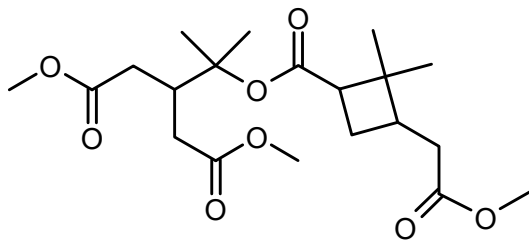


or



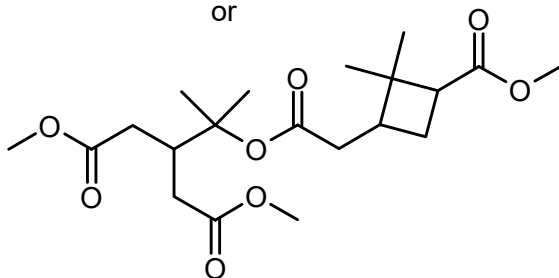
Methylated MW 400 (C₂₀H₃₂O₈)

(a)



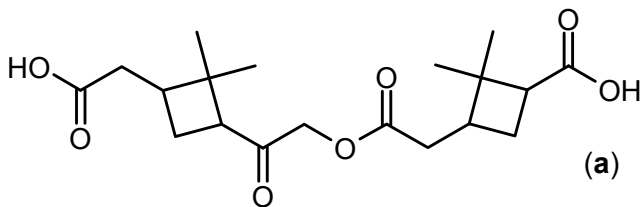
or

(b)



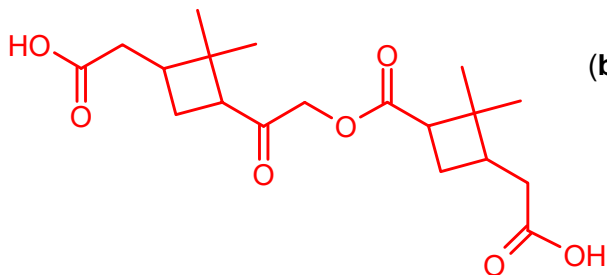
MW 368 (C₁₉H₂₈O₇)

Nonderivatized



(a)

or



(b)

Methylated MW 396 (C₂₁H₃₂O₇)

or

