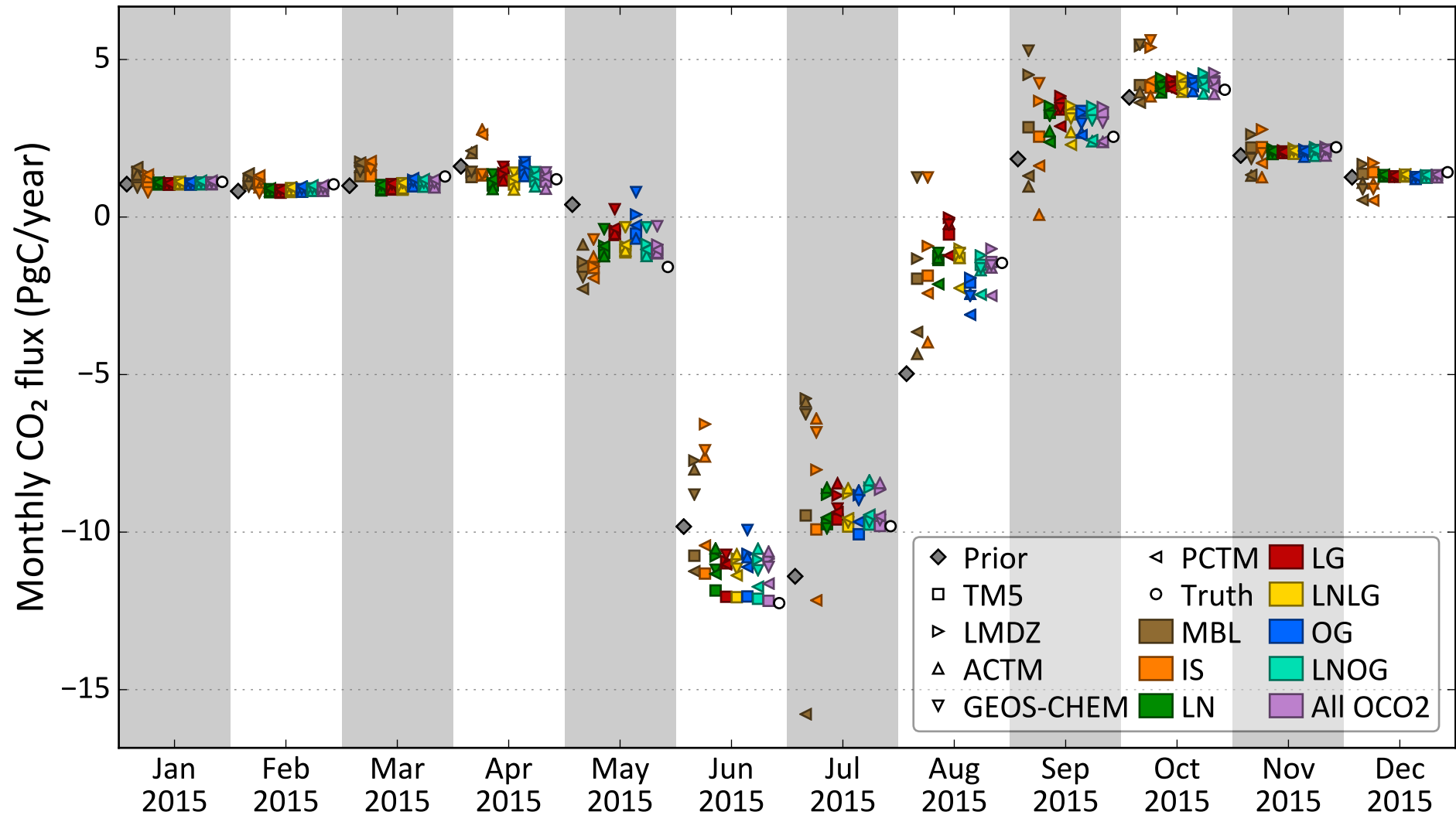
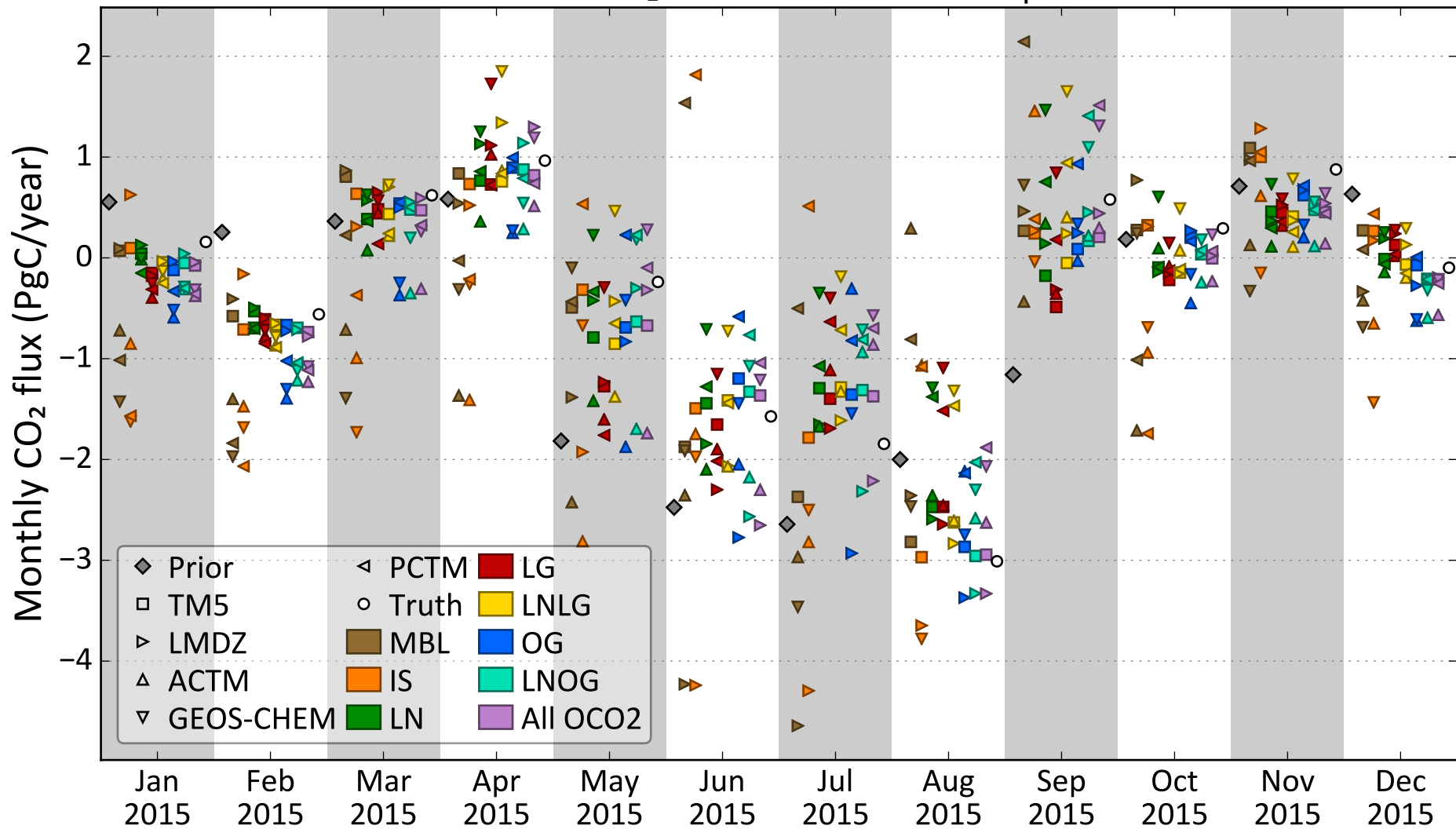


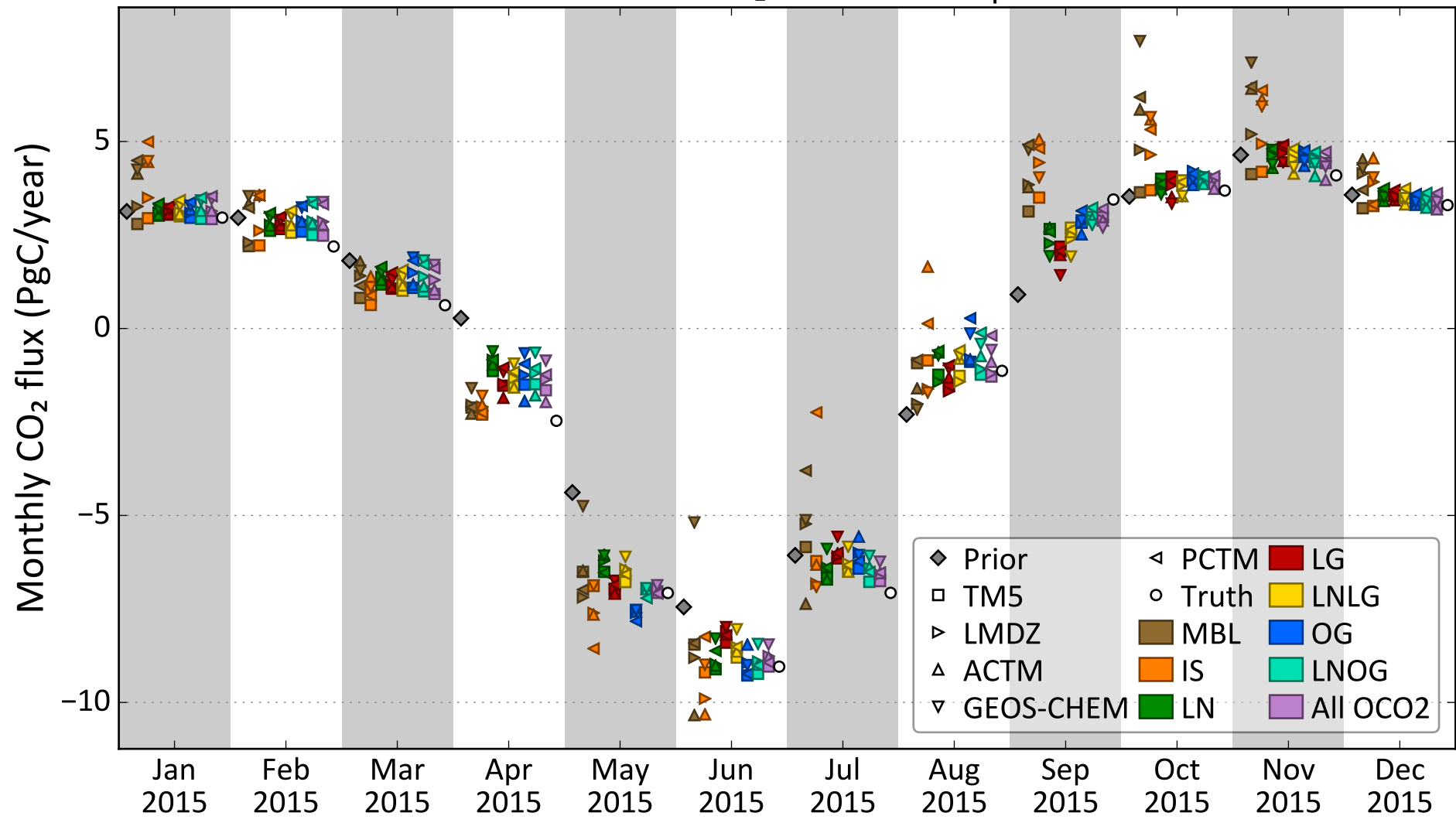
Terrestrial CO₂ flux from Eurasian Boreal



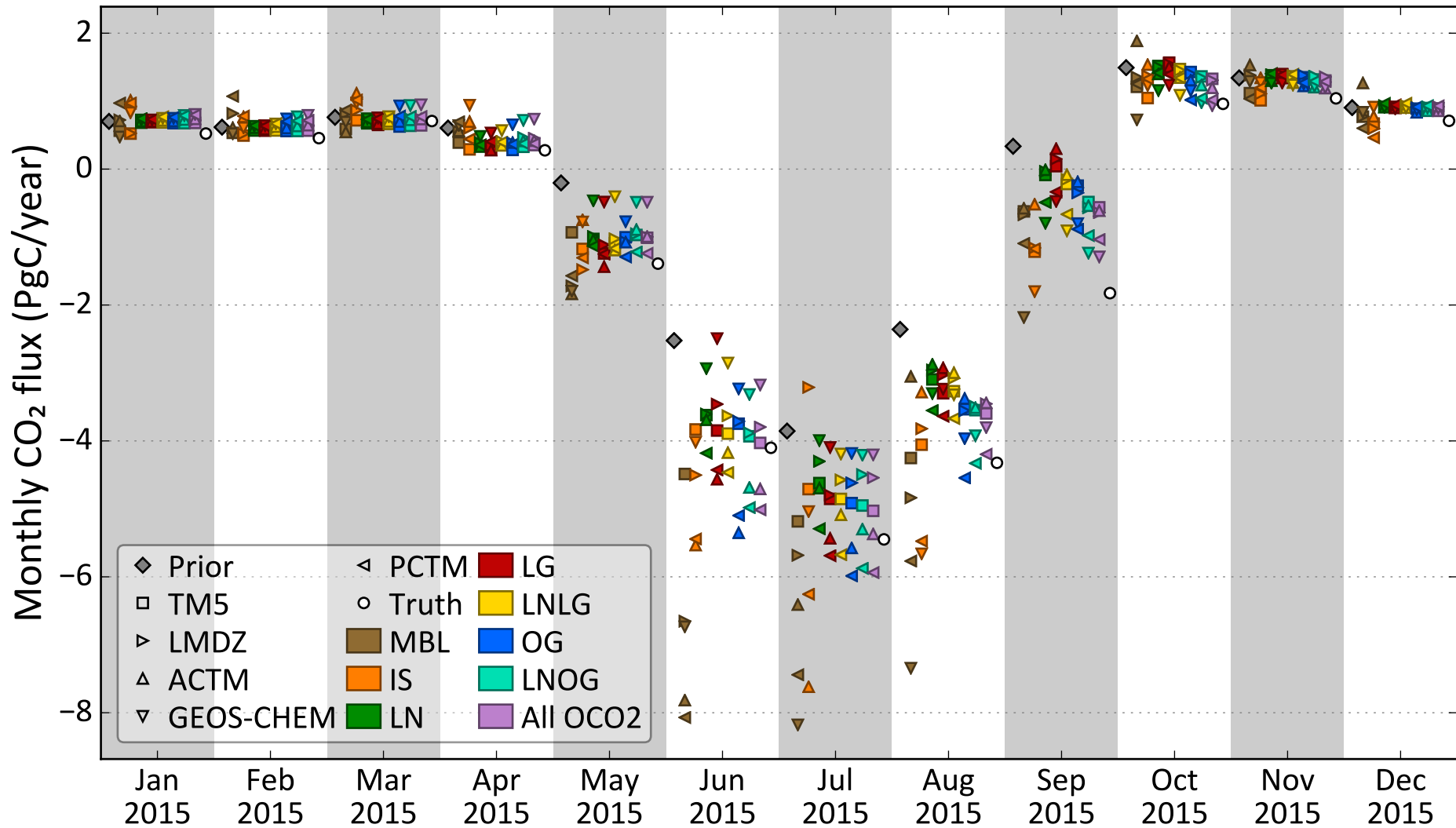
Terrestrial CO₂ flux from Eurasian Temperate



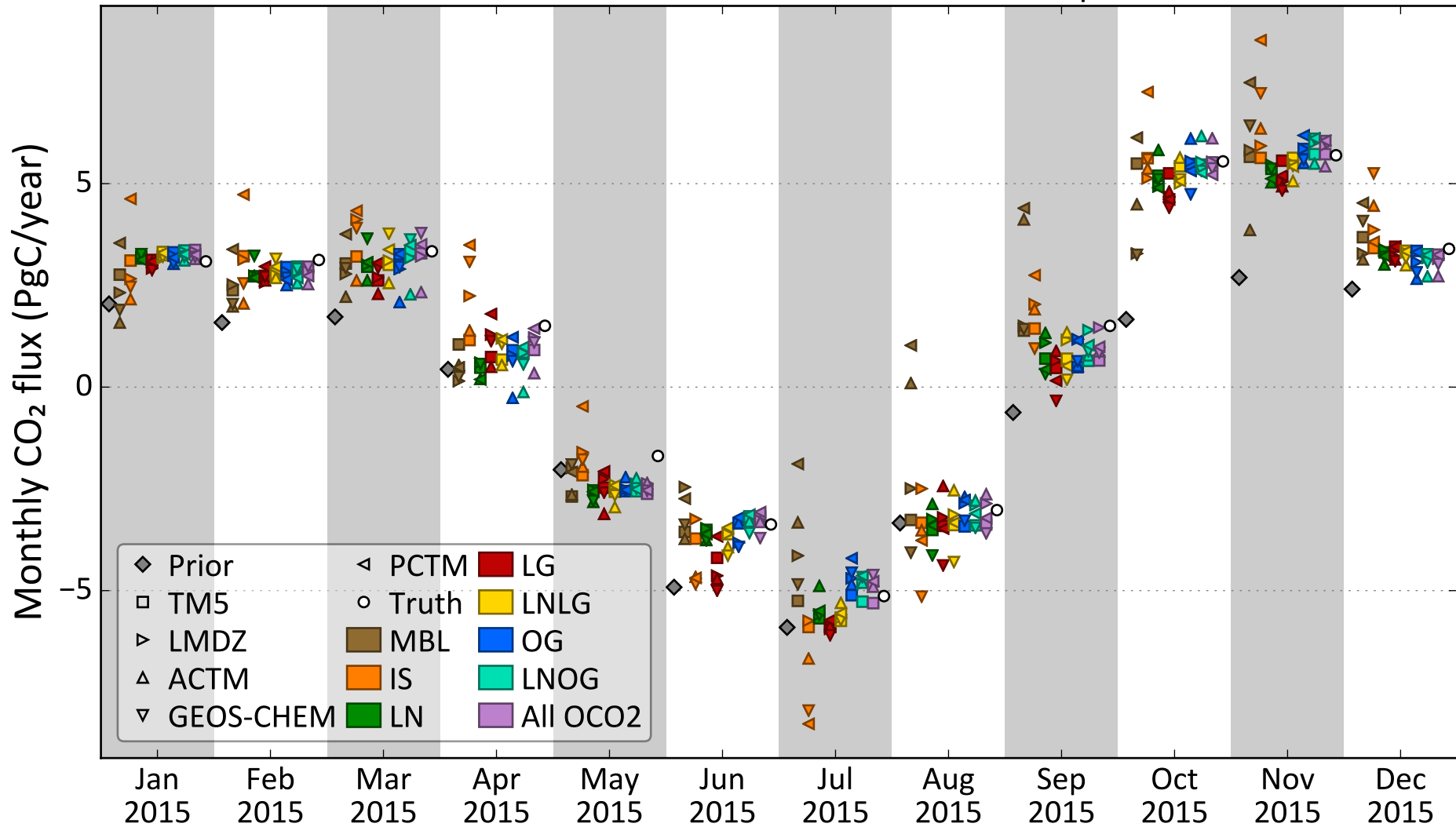
Terrestrial CO₂ flux from Europe



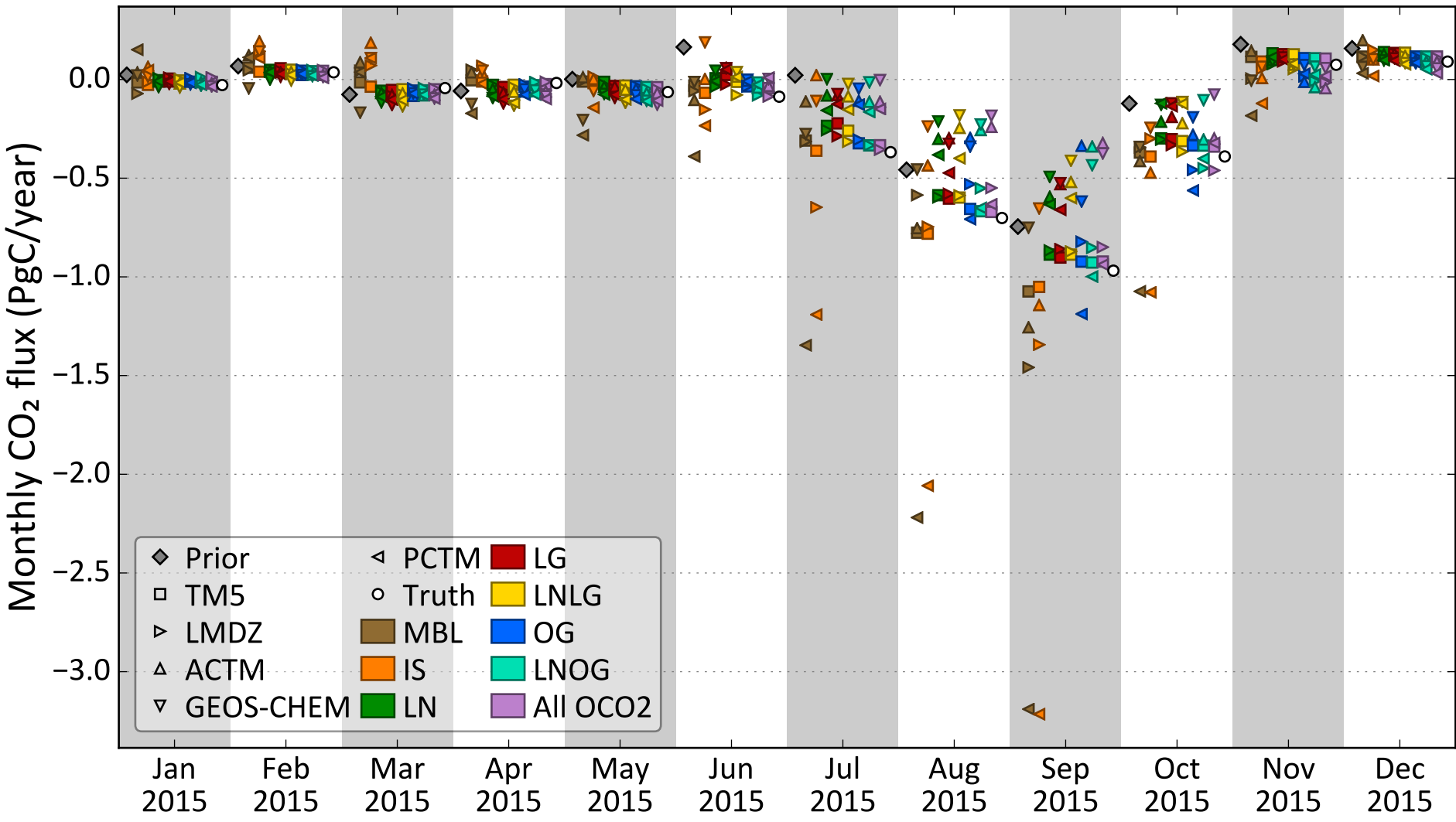
Terrestrial CO₂ flux from North American Boreal



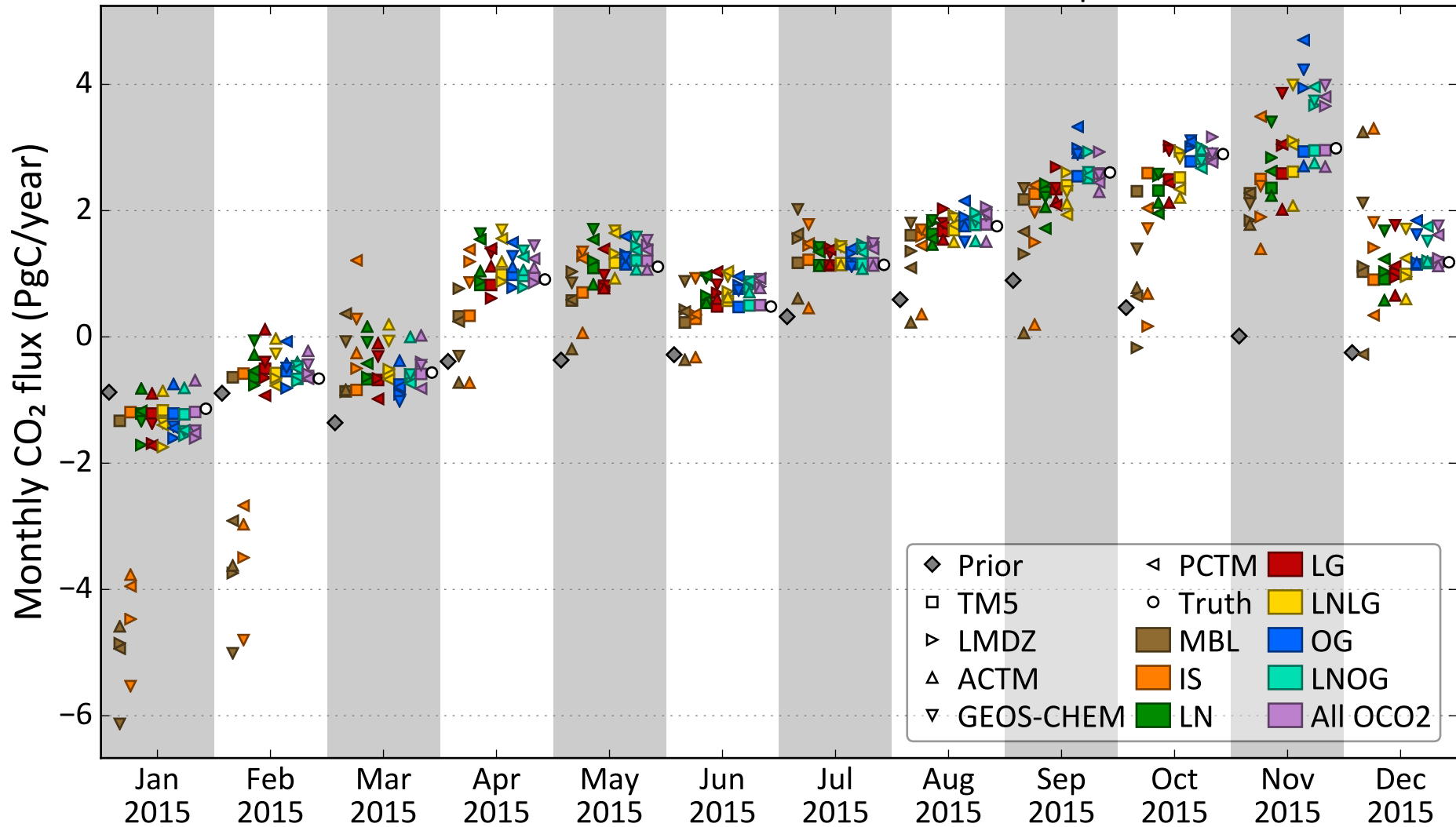
Terrestrial CO₂ flux from North American Temperate



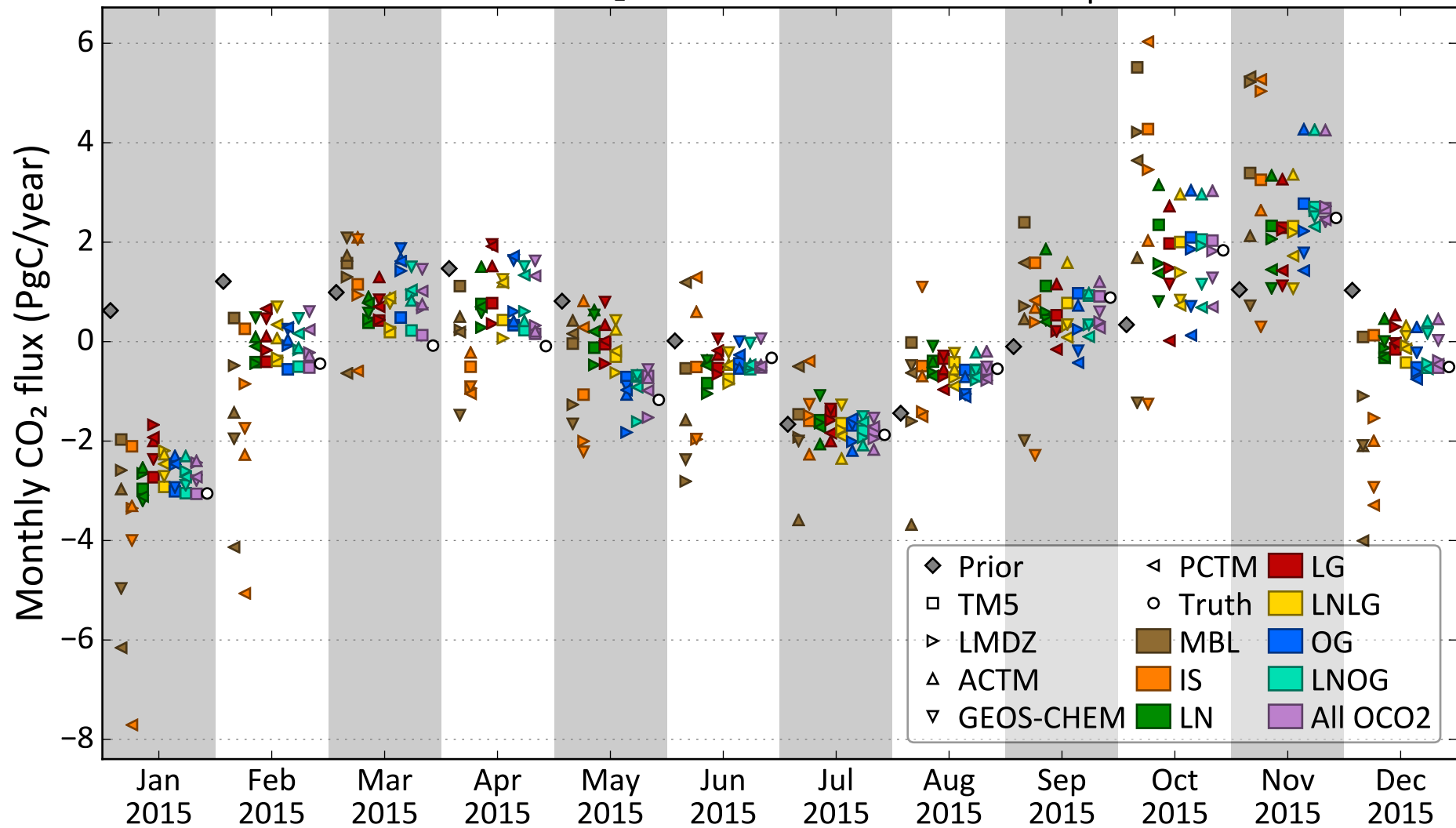
Terrestrial CO₂ flux from Saharan Africa



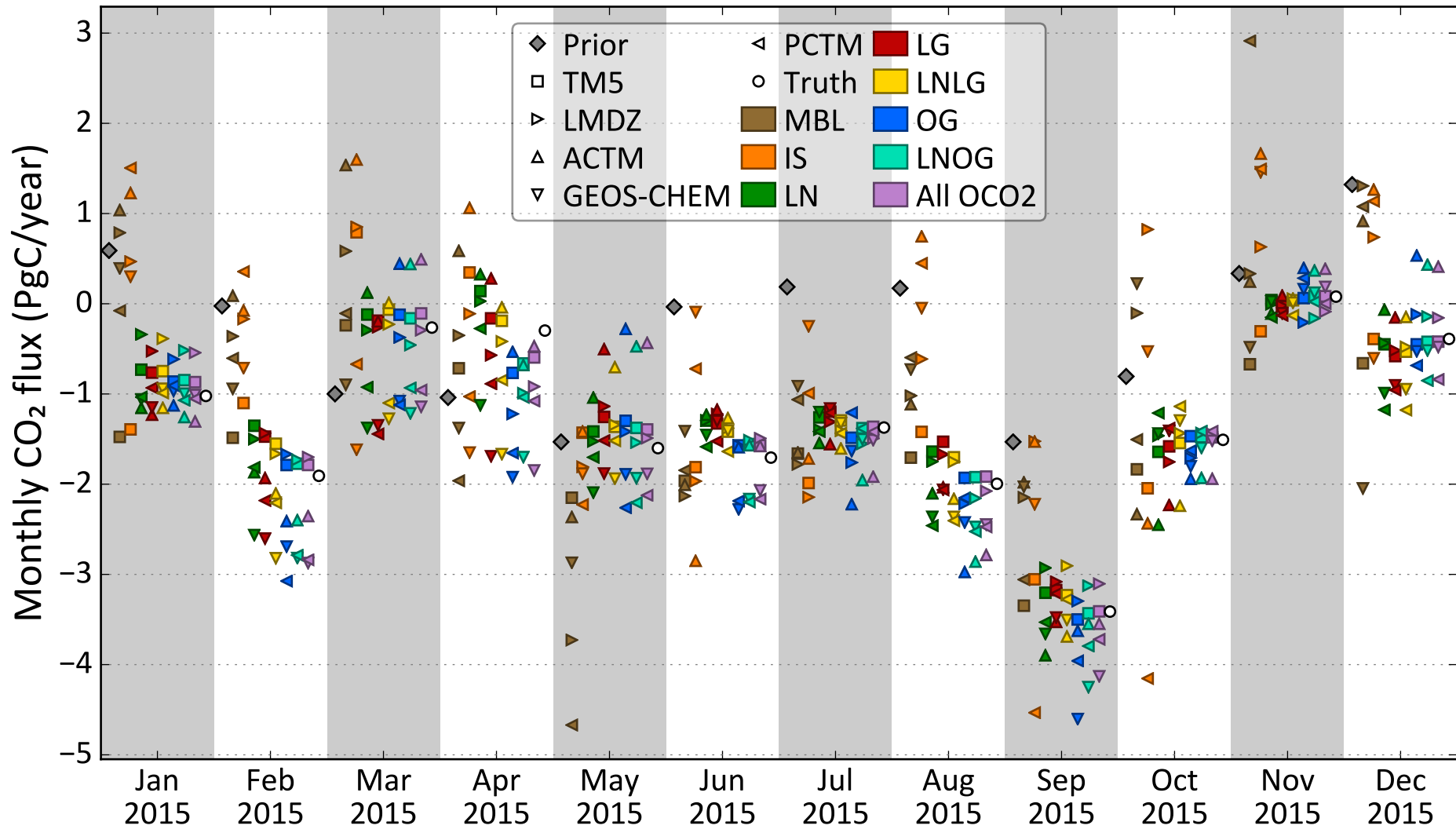
Terrestrial CO₂ flux from South American Temperate



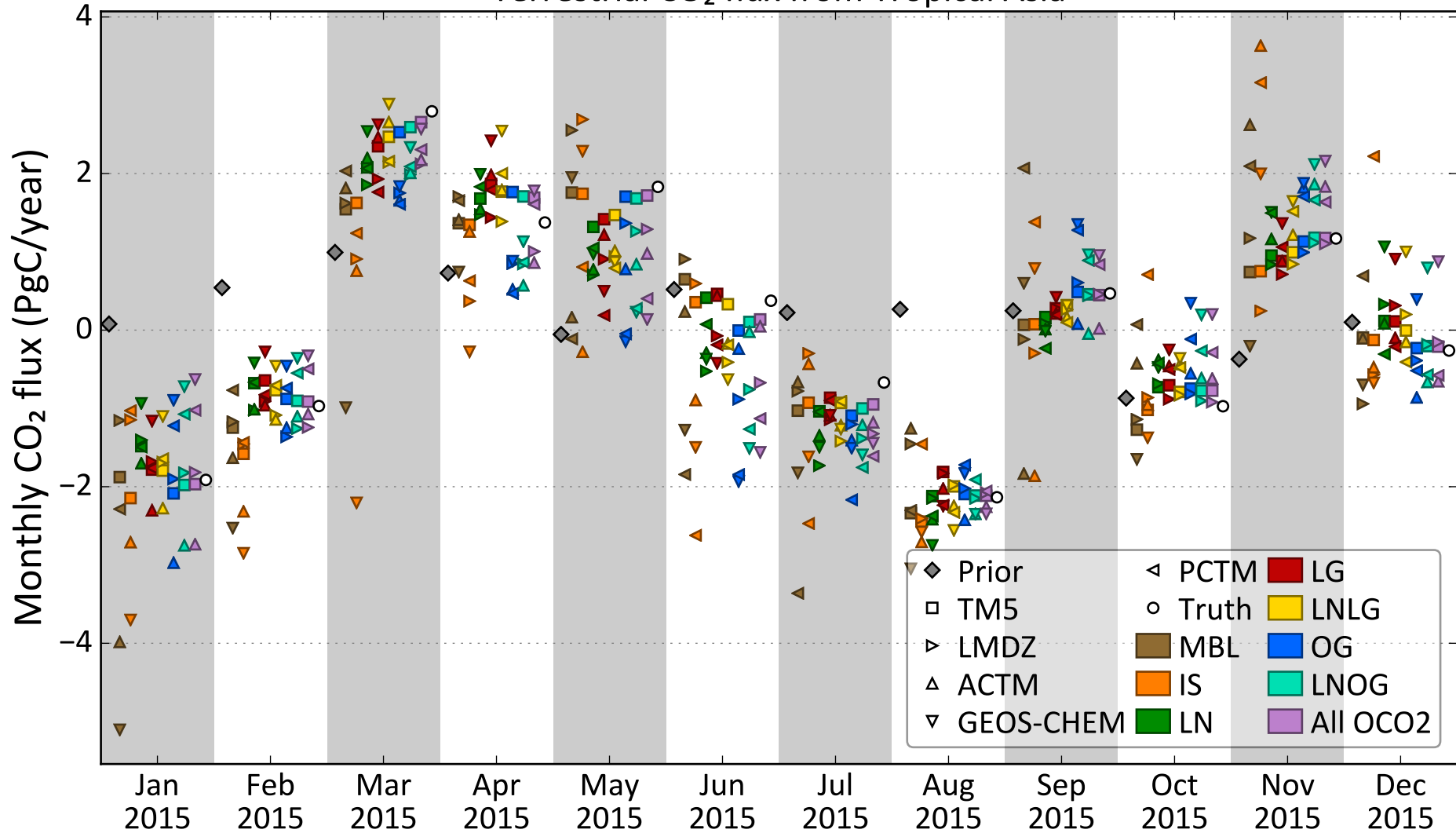
Terrestrial CO₂ flux from South American Tropical



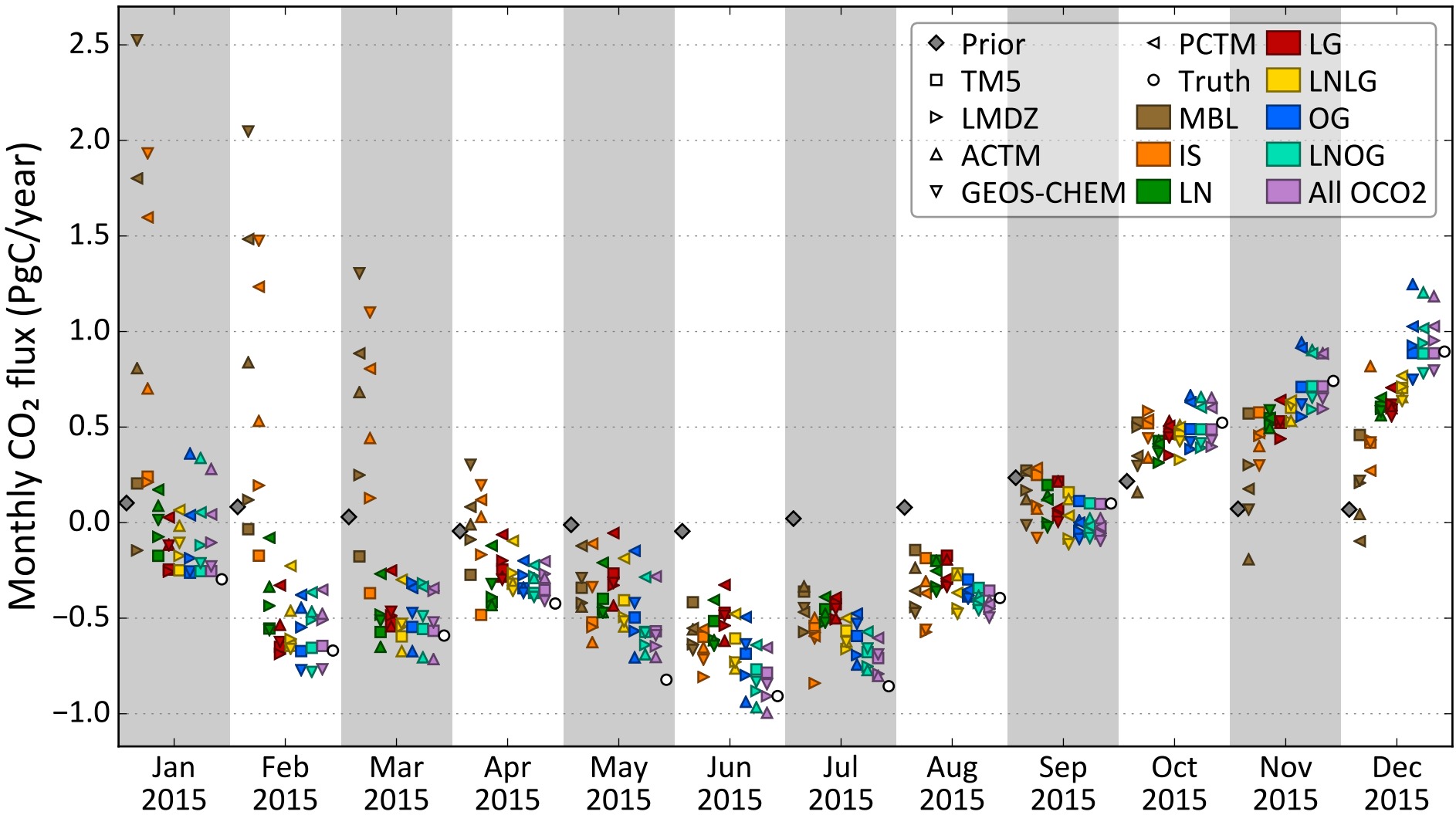
Terrestrial CO₂ flux from Sub-Saharan Africa



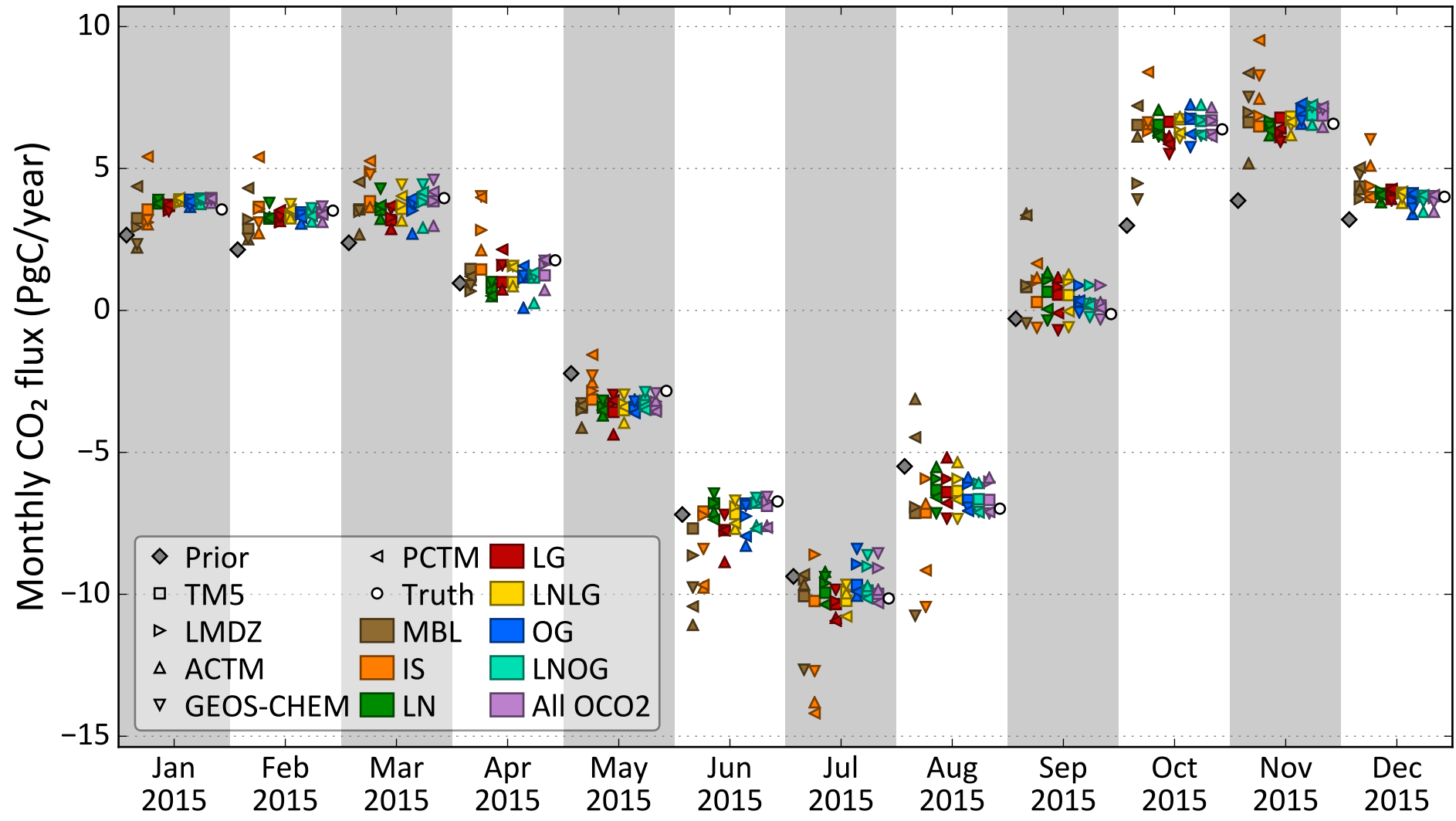
Terrestrial CO₂ flux from Tropical Asia



Terrestrial CO₂ flux from Australia

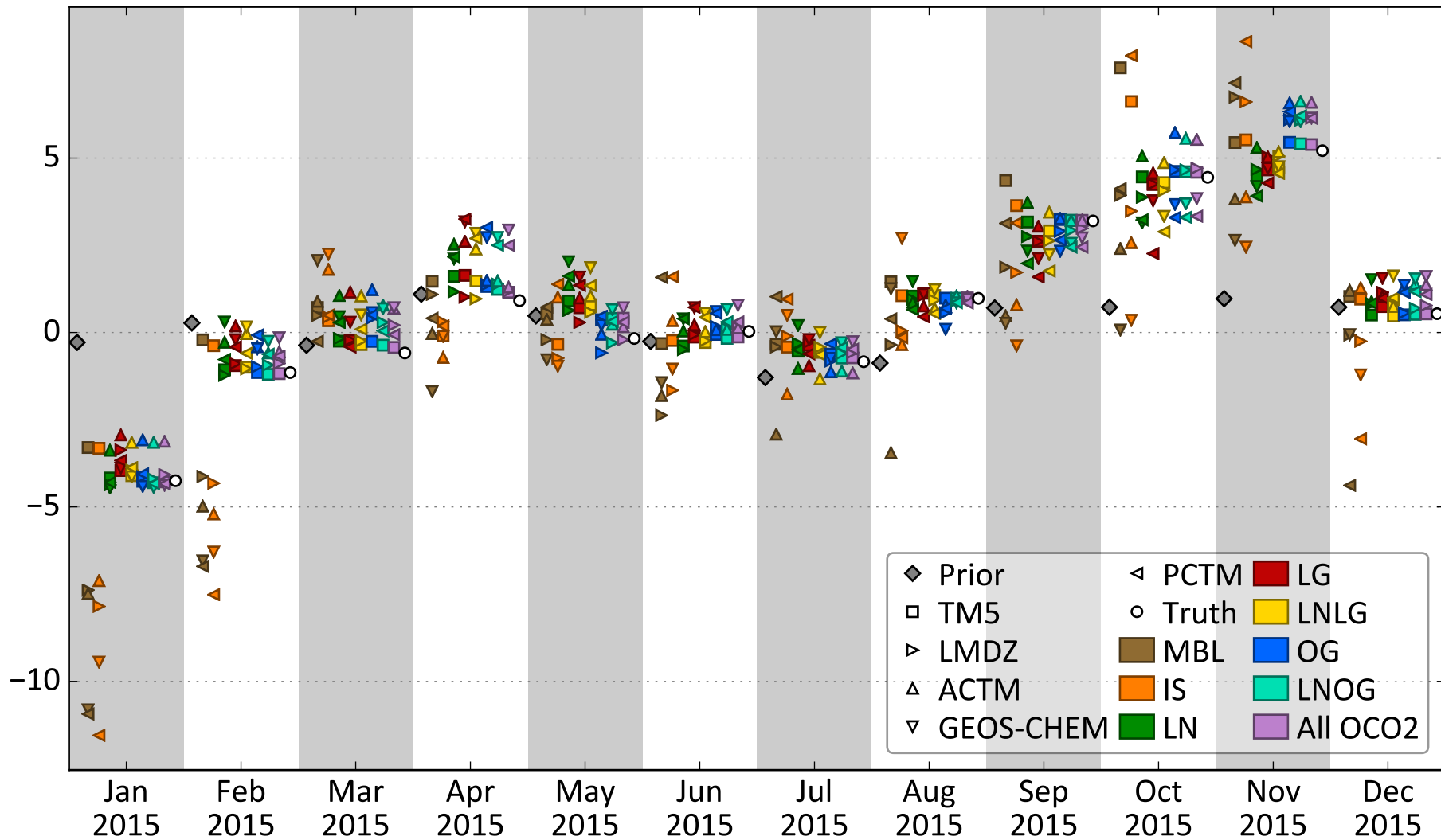


Terrestrial CO₂ flux from North America

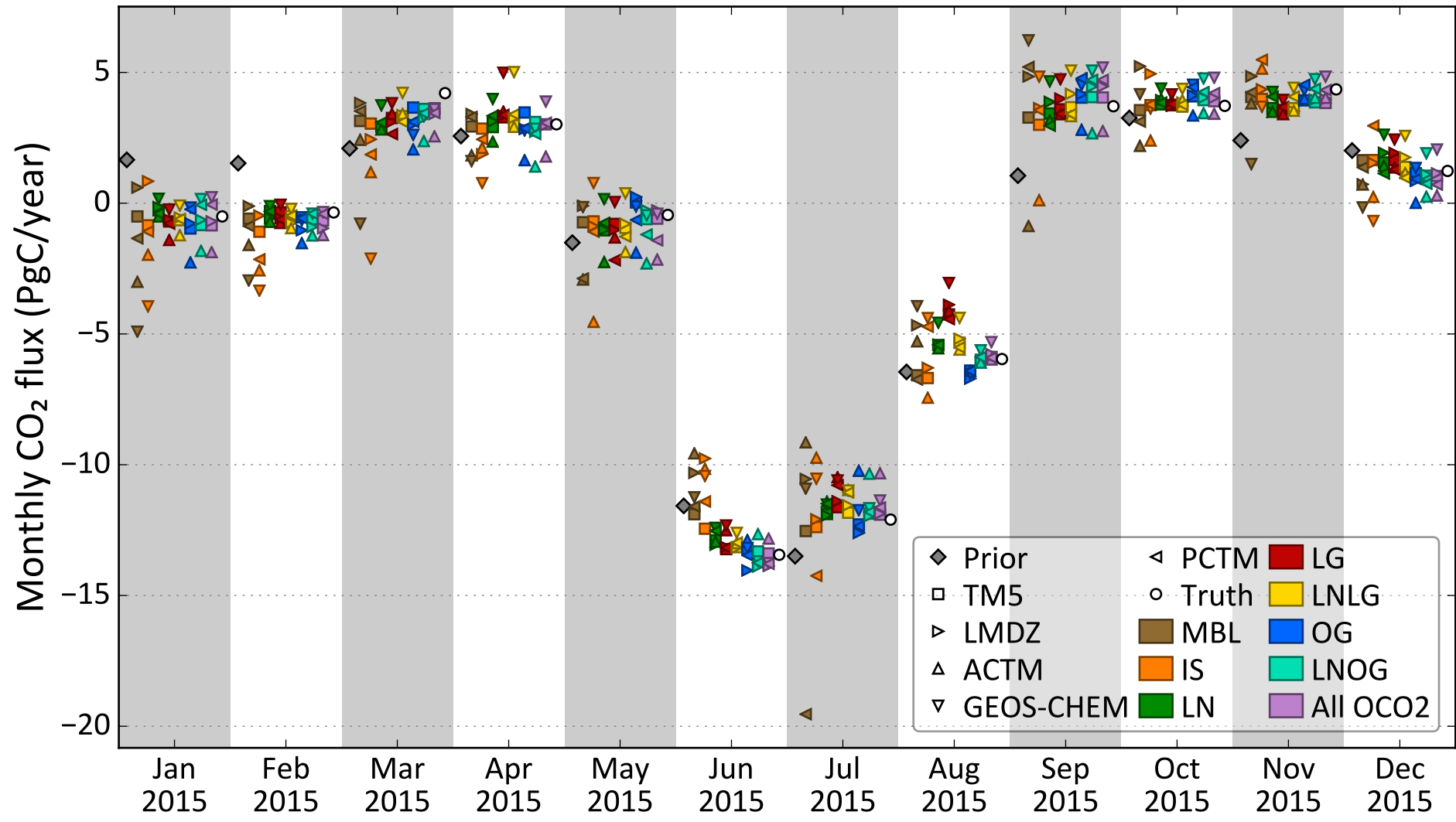


Terrestrial CO₂ flux from South America

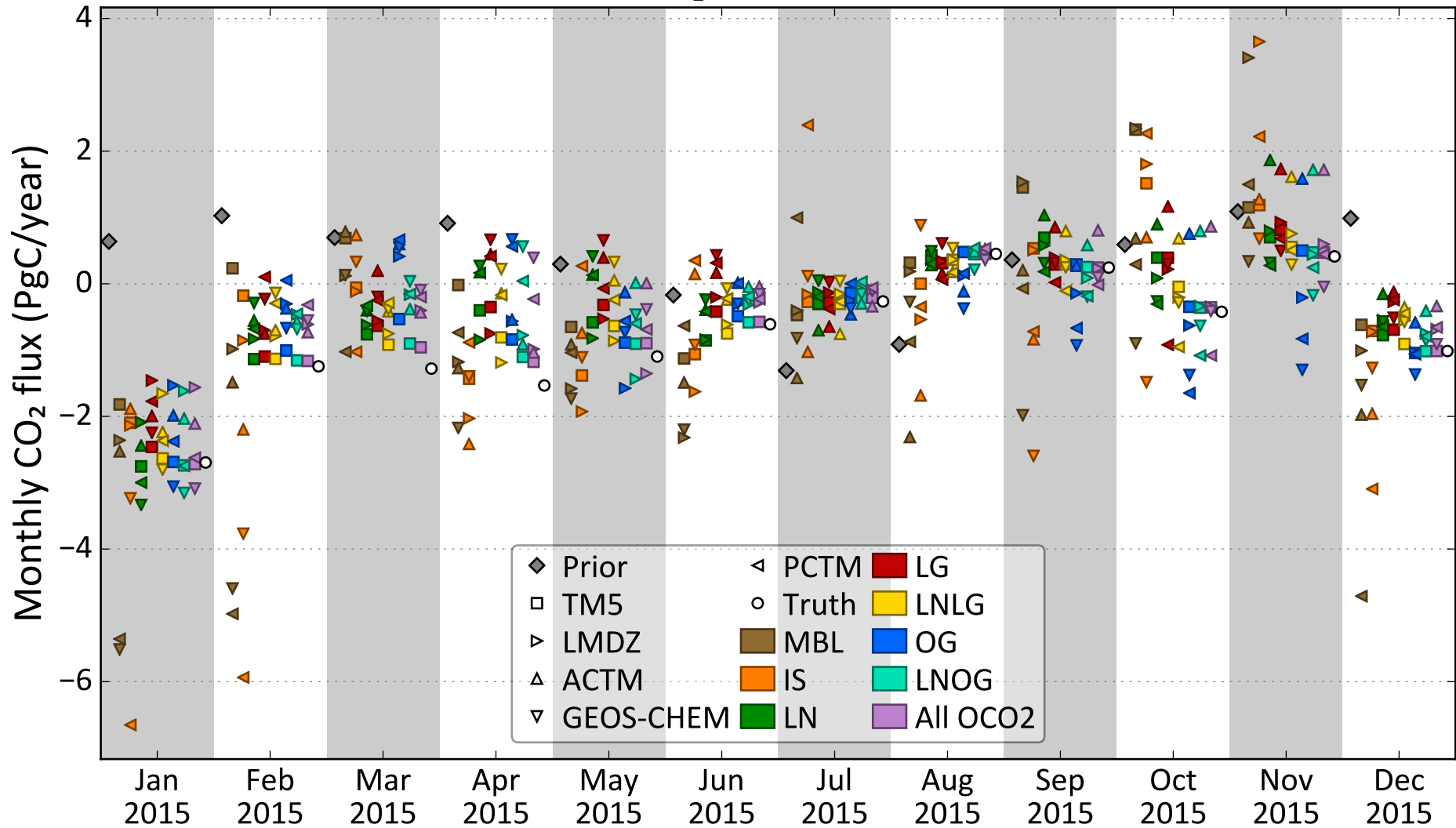
Monthly CO₂ flux (PgC/year)



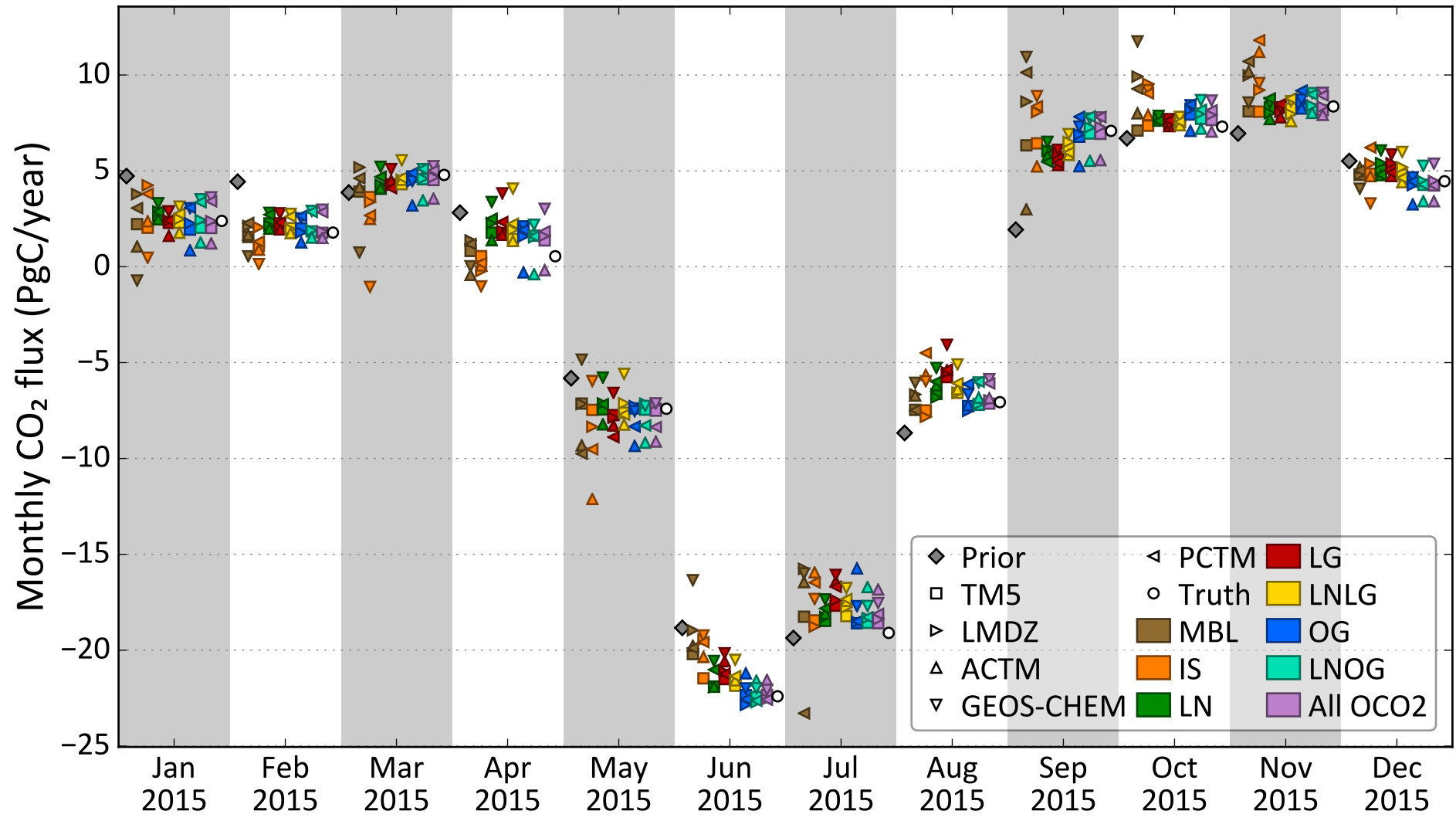
Terrestrial CO₂ flux from Asia



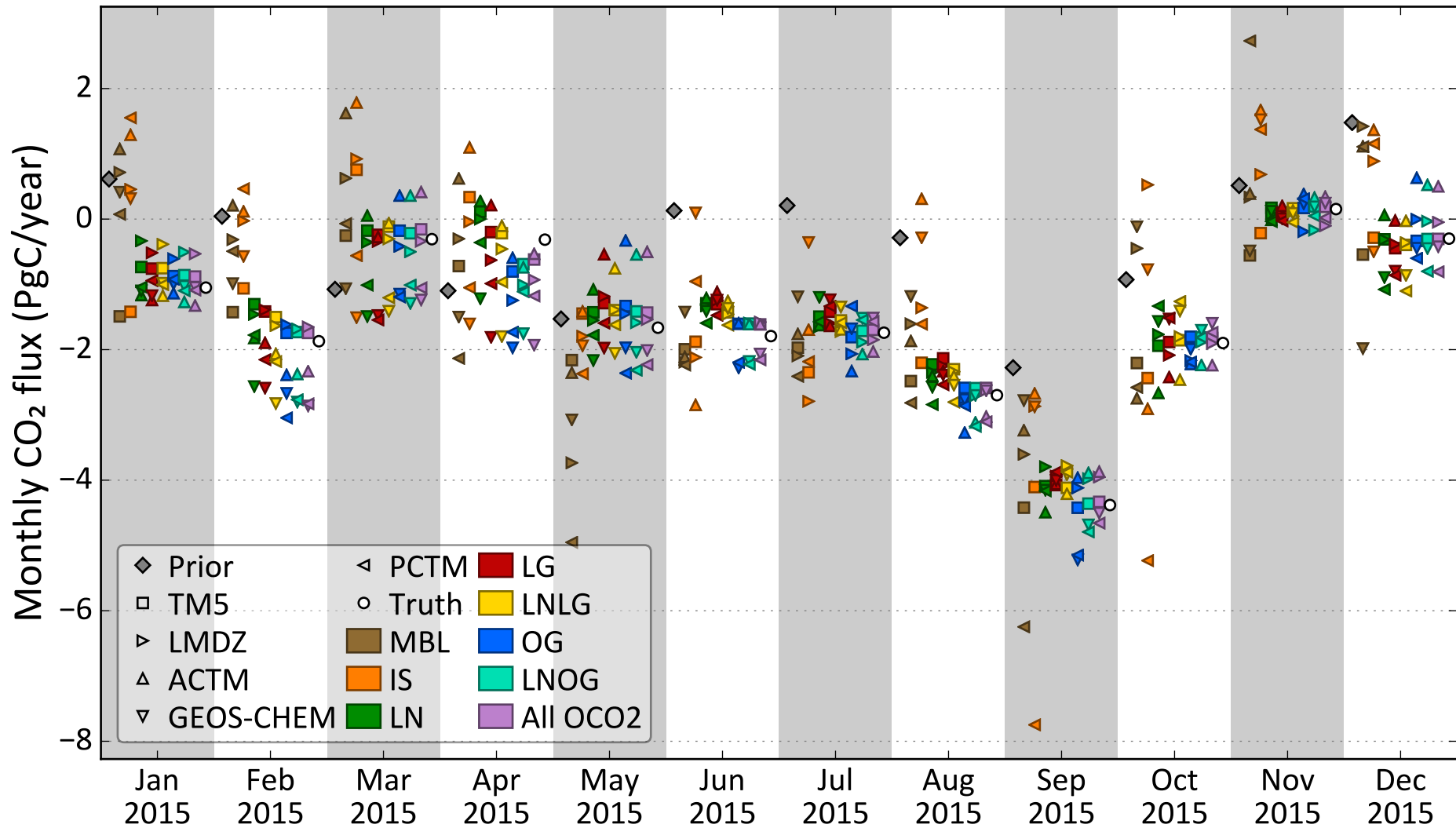
Terrestrial CO₂ flux from Amazon Basin



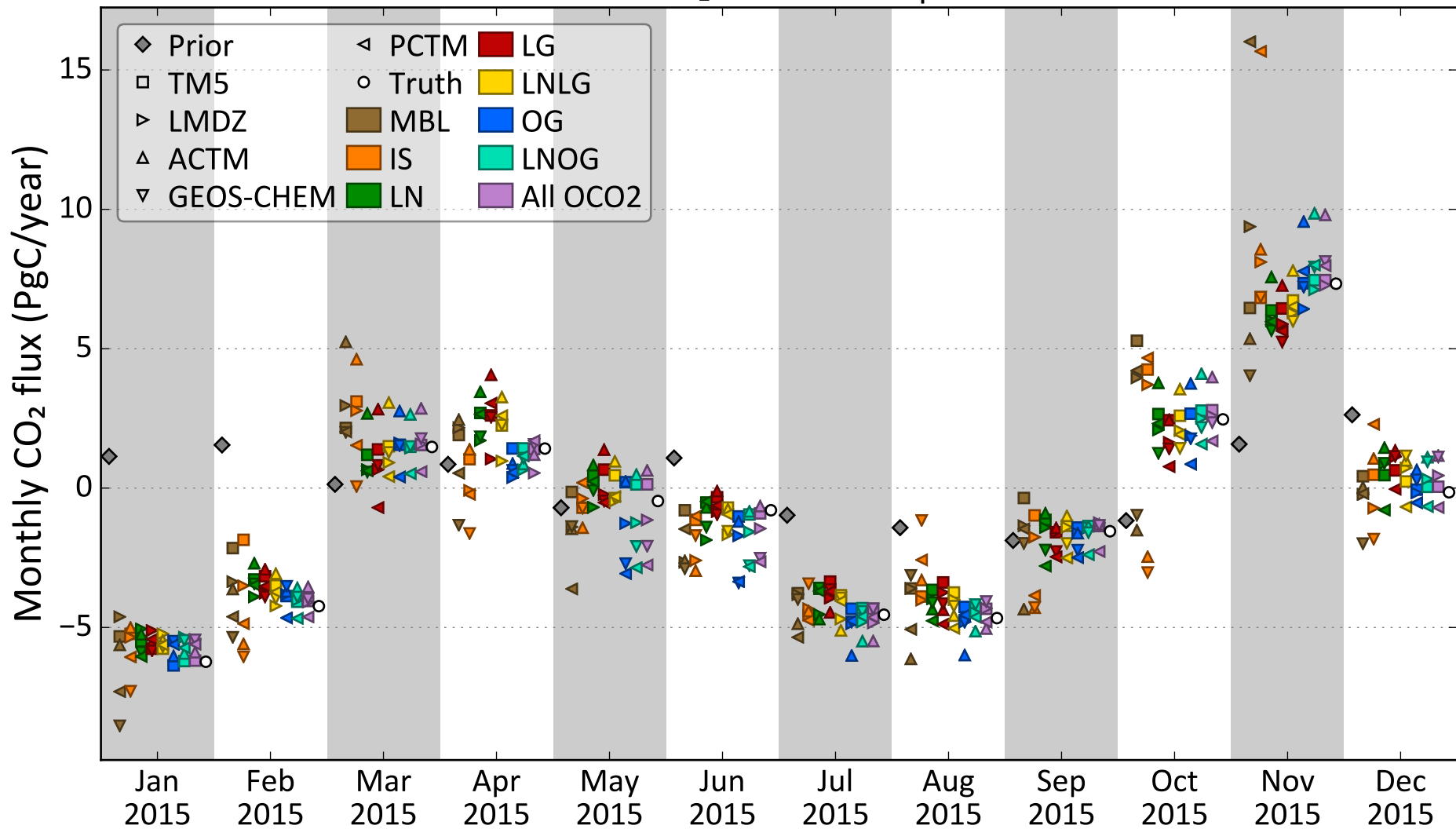
Terrestrial CO₂ flux from Eurasia



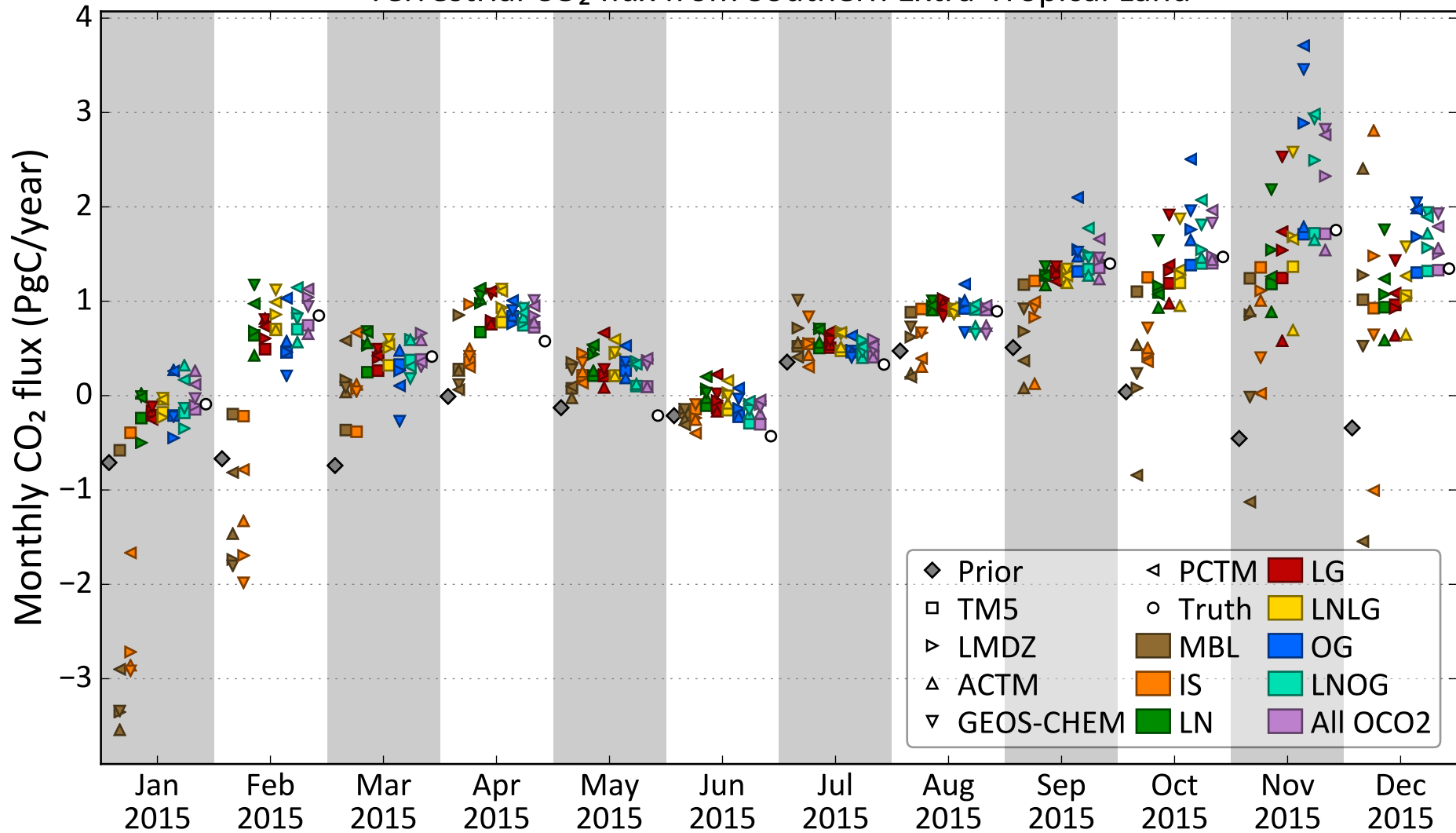
Terrestrial CO₂ flux from Africa



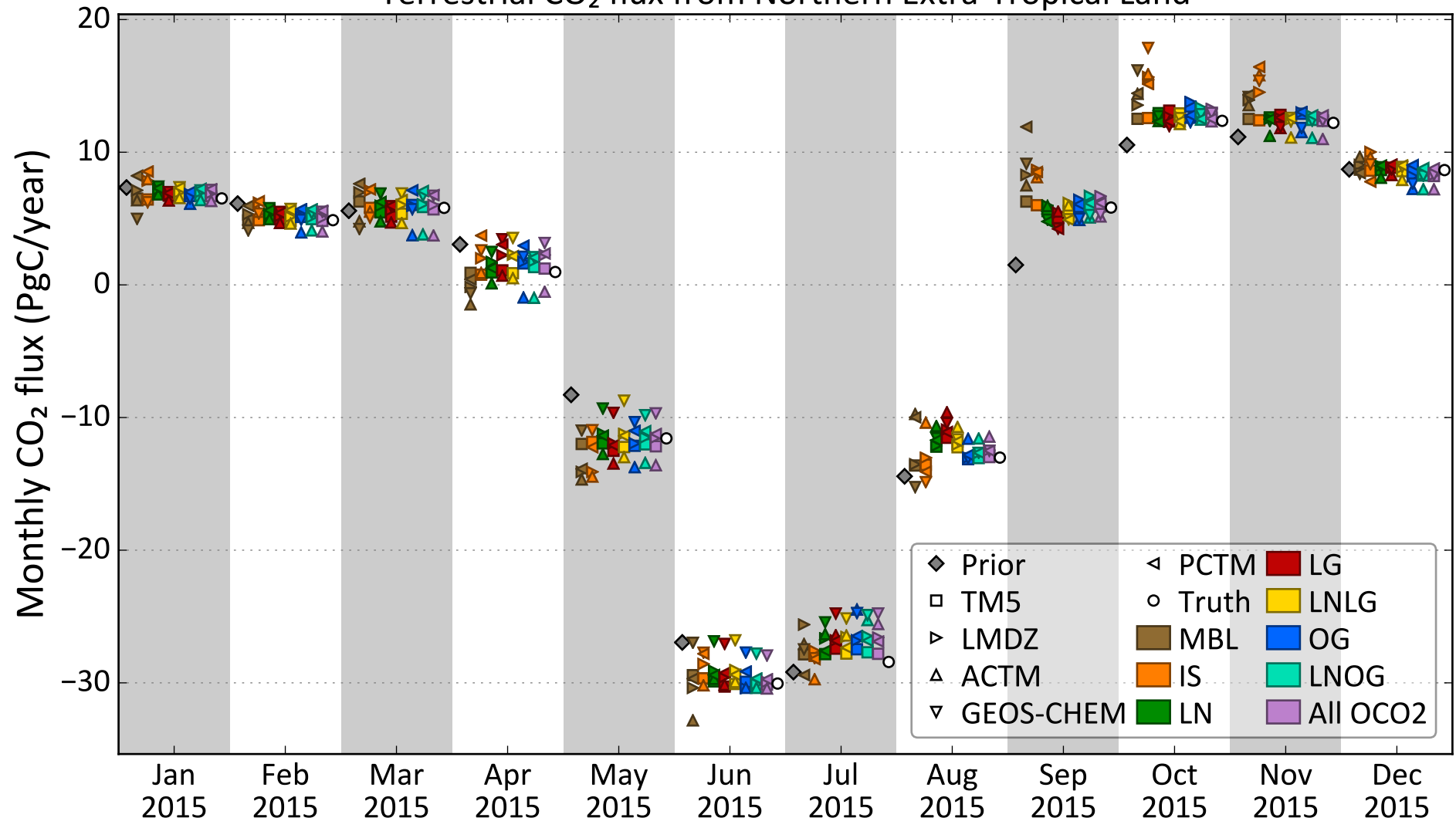
Terrestrial CO₂ flux from Tropical Land



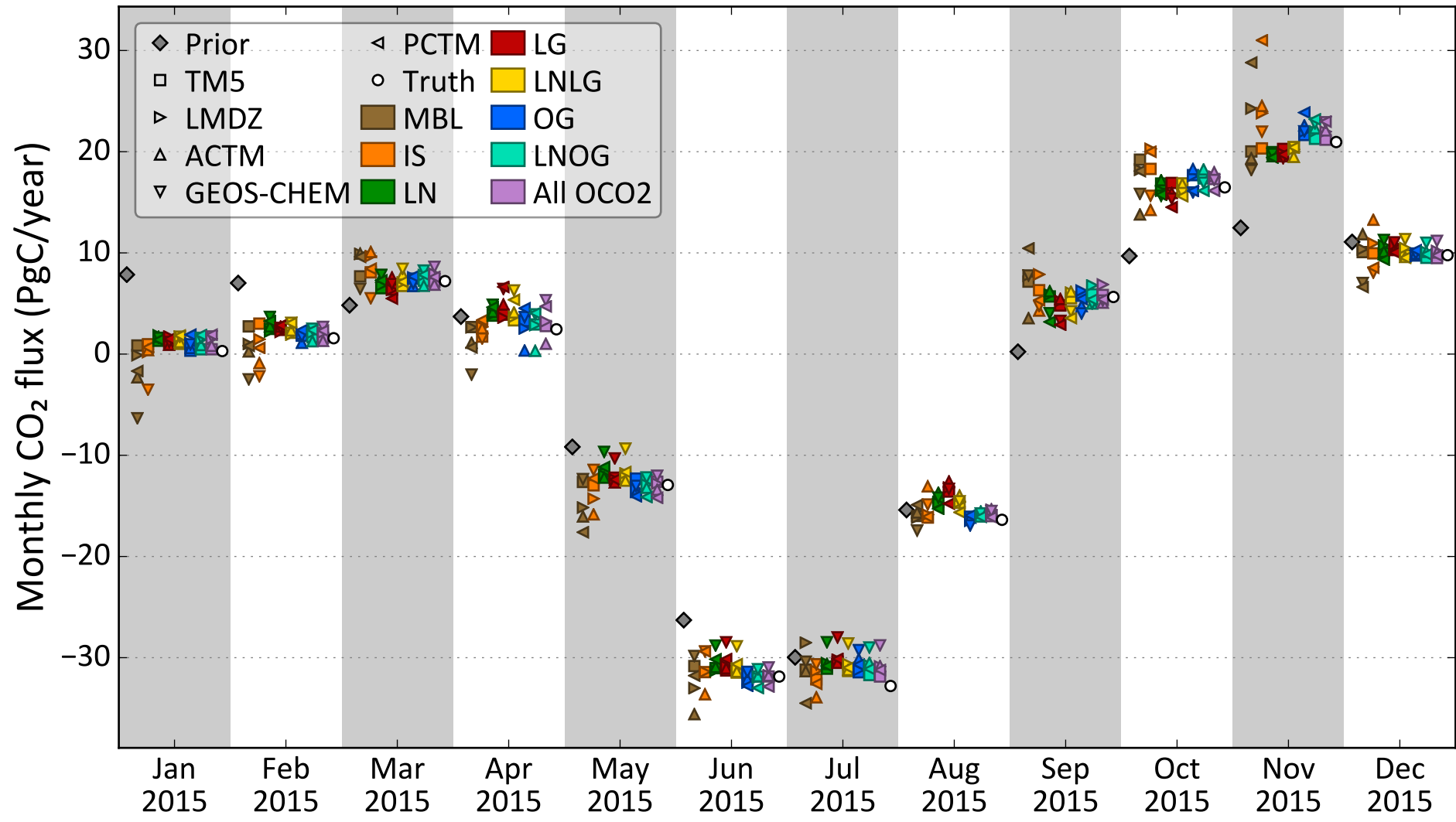
Terrestrial CO₂ flux from Southern Extra-Tropical Land



Terrestrial CO₂ flux from Northern Extra-Tropical Land

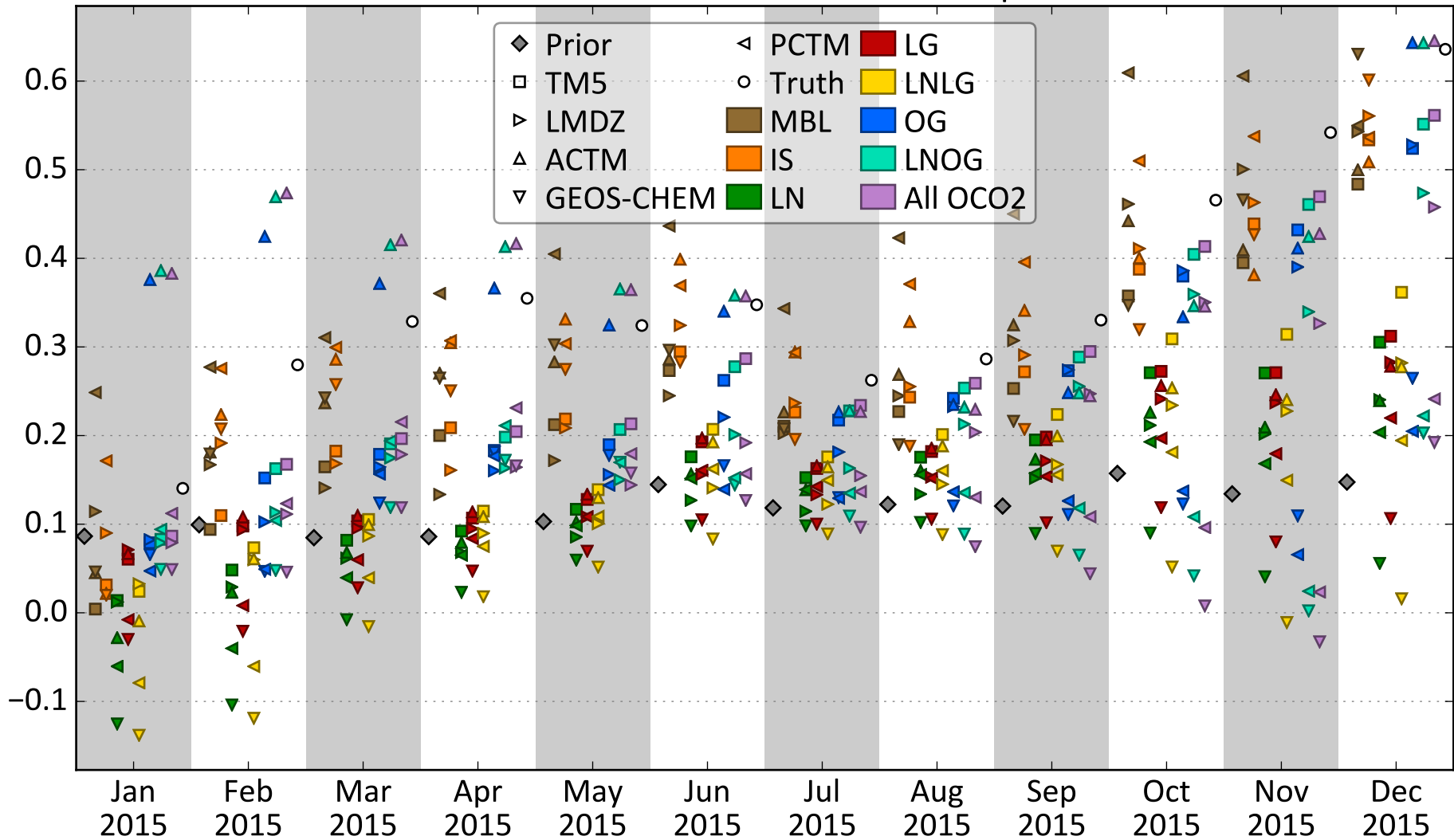


Terrestrial CO₂ flux from Global Land

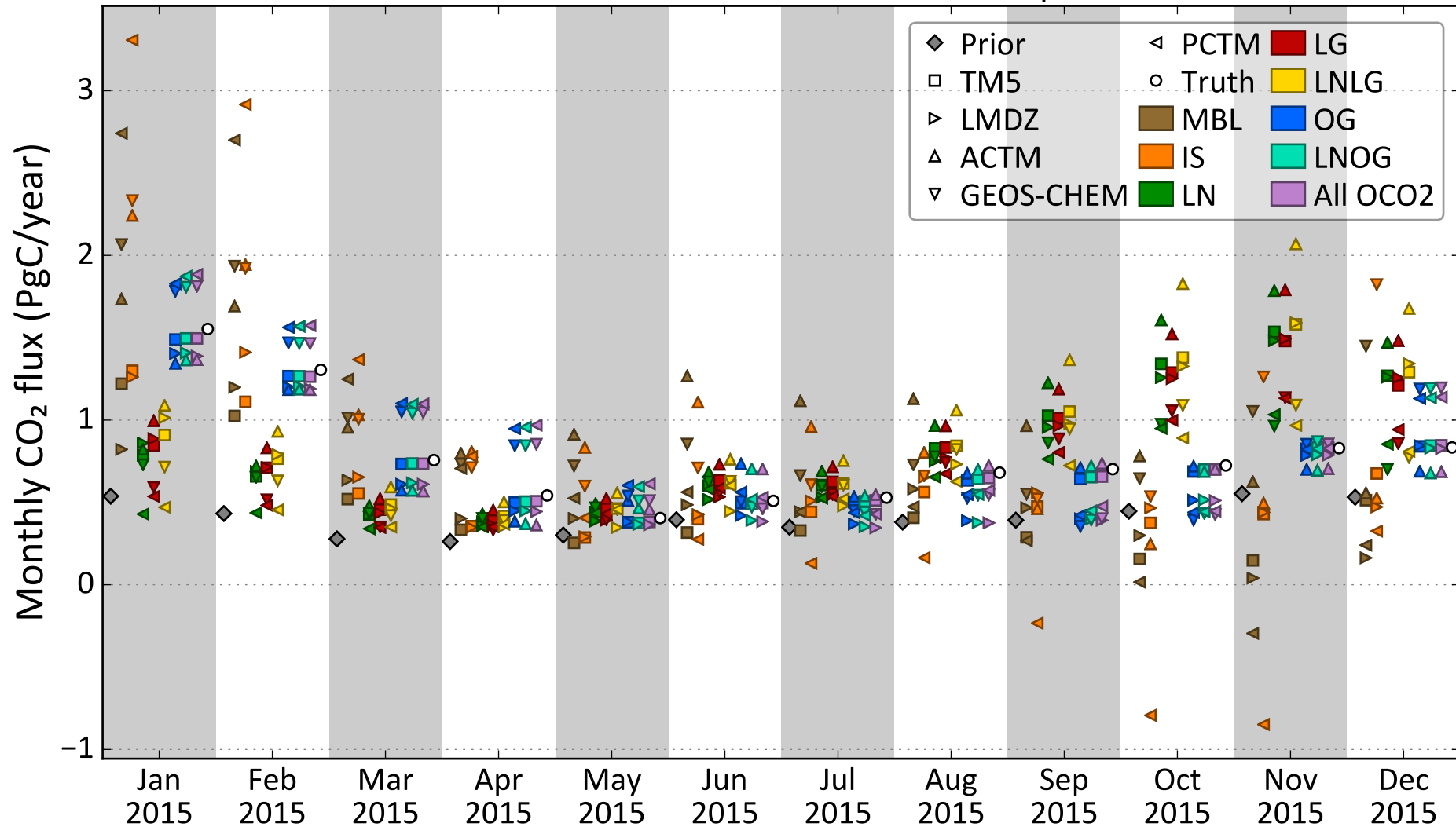


Oceanic CO₂ flux from Atlantic Tropics

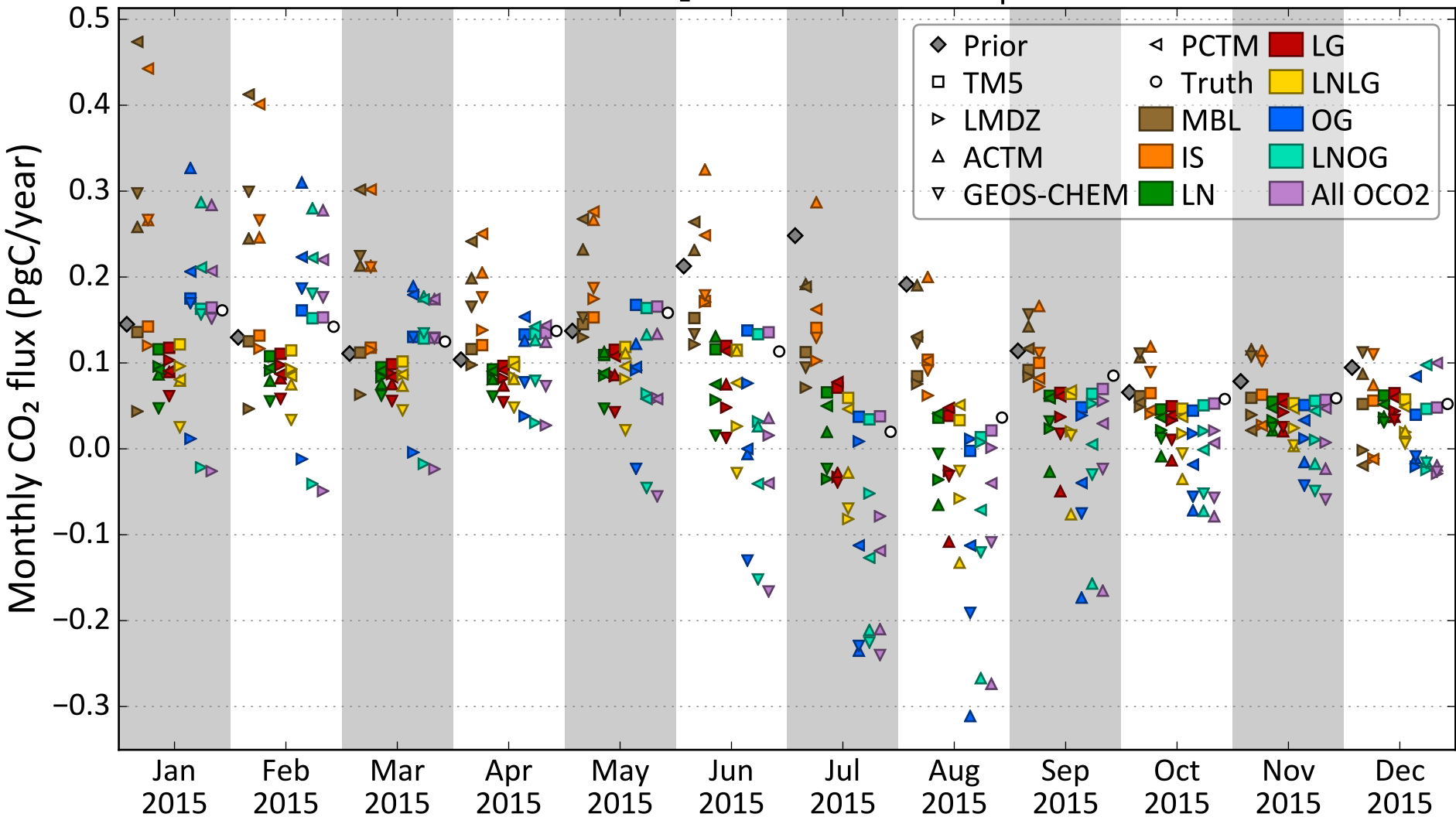
Monthly CO₂ flux (PgC/year)



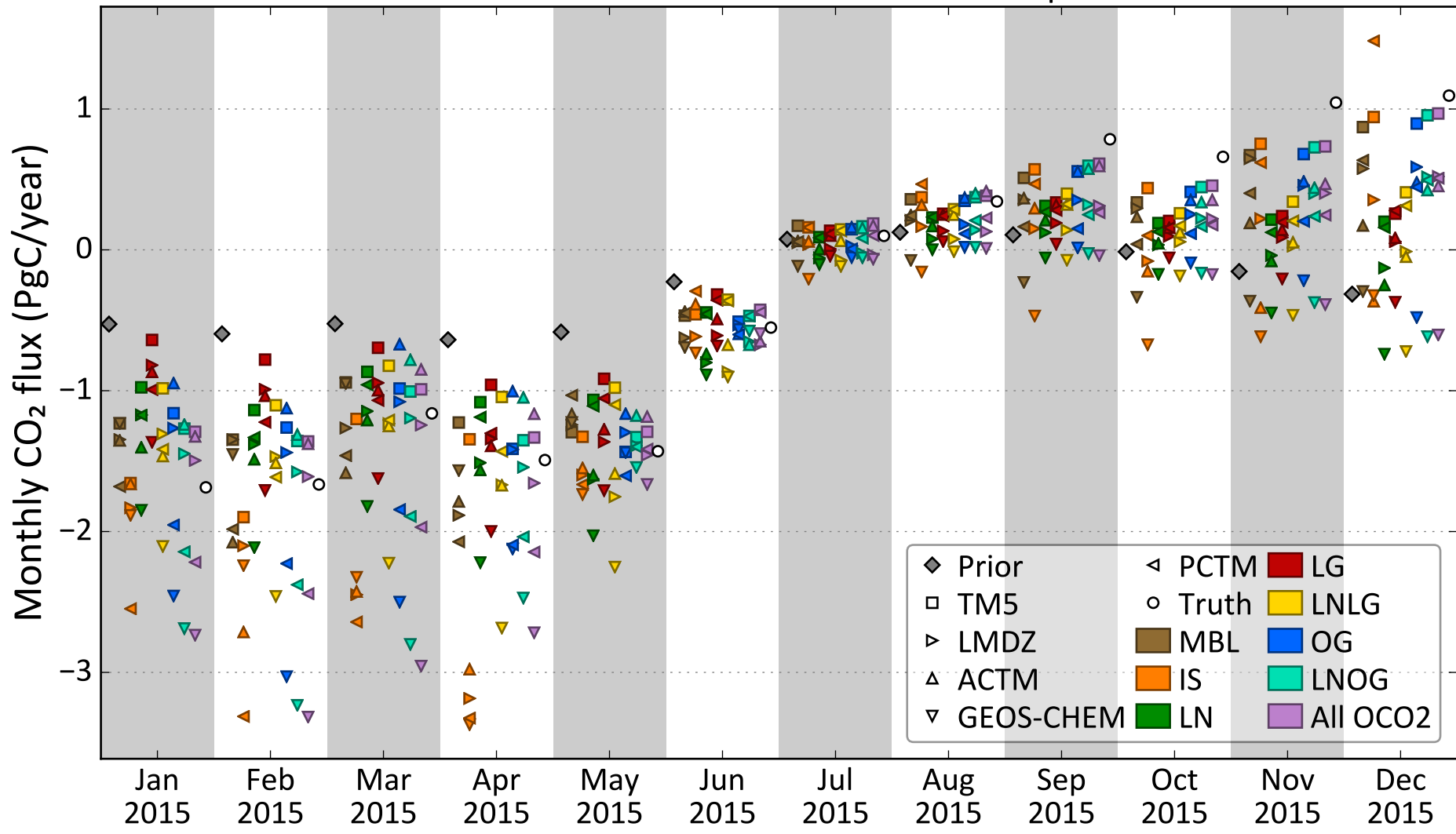
Oceanic CO₂ flux from East Pacific Tropics



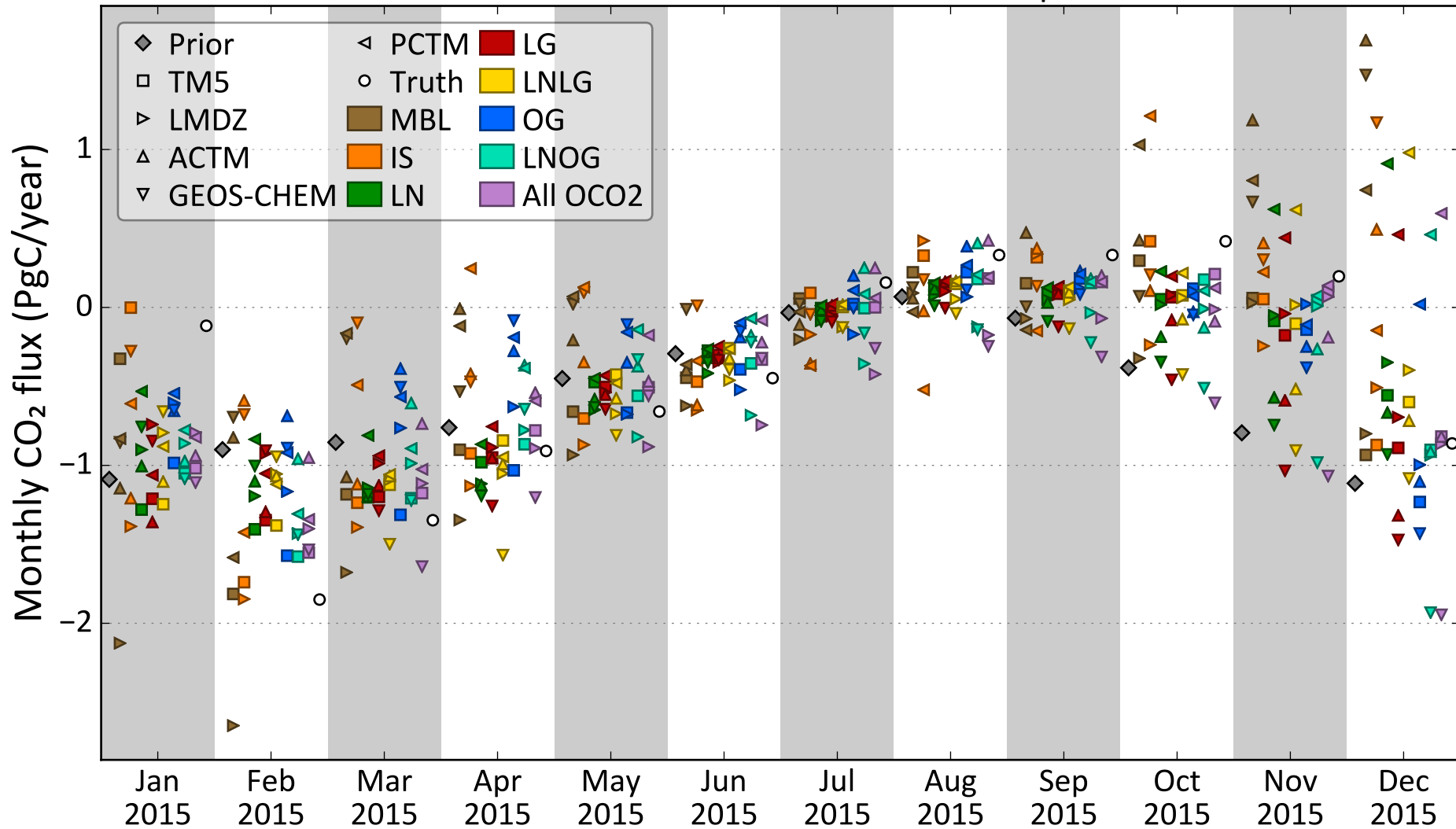
Oceanic CO₂ flux from Indian Tropical



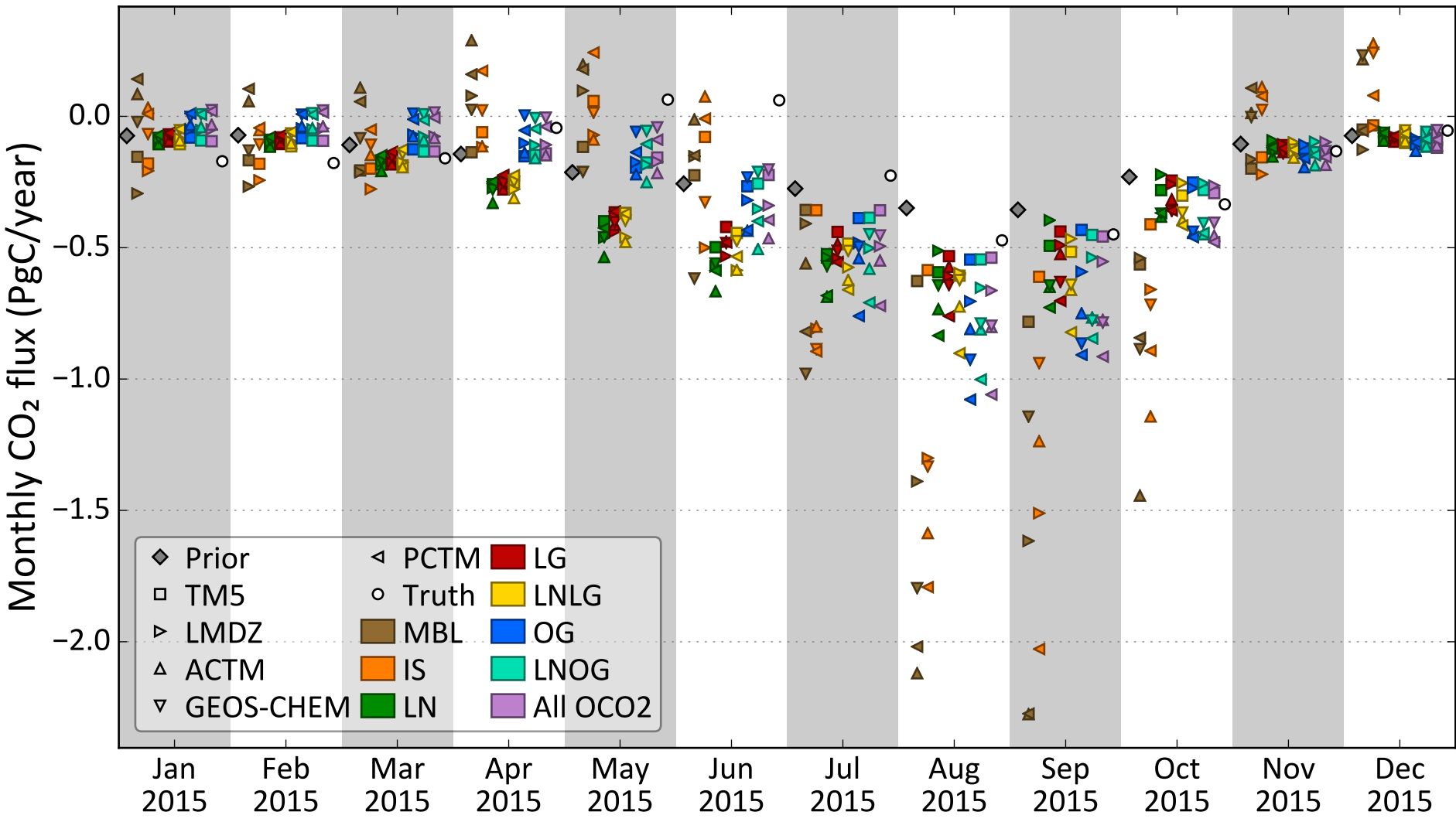
Oceanic CO₂ flux from North Atlantic Temperate



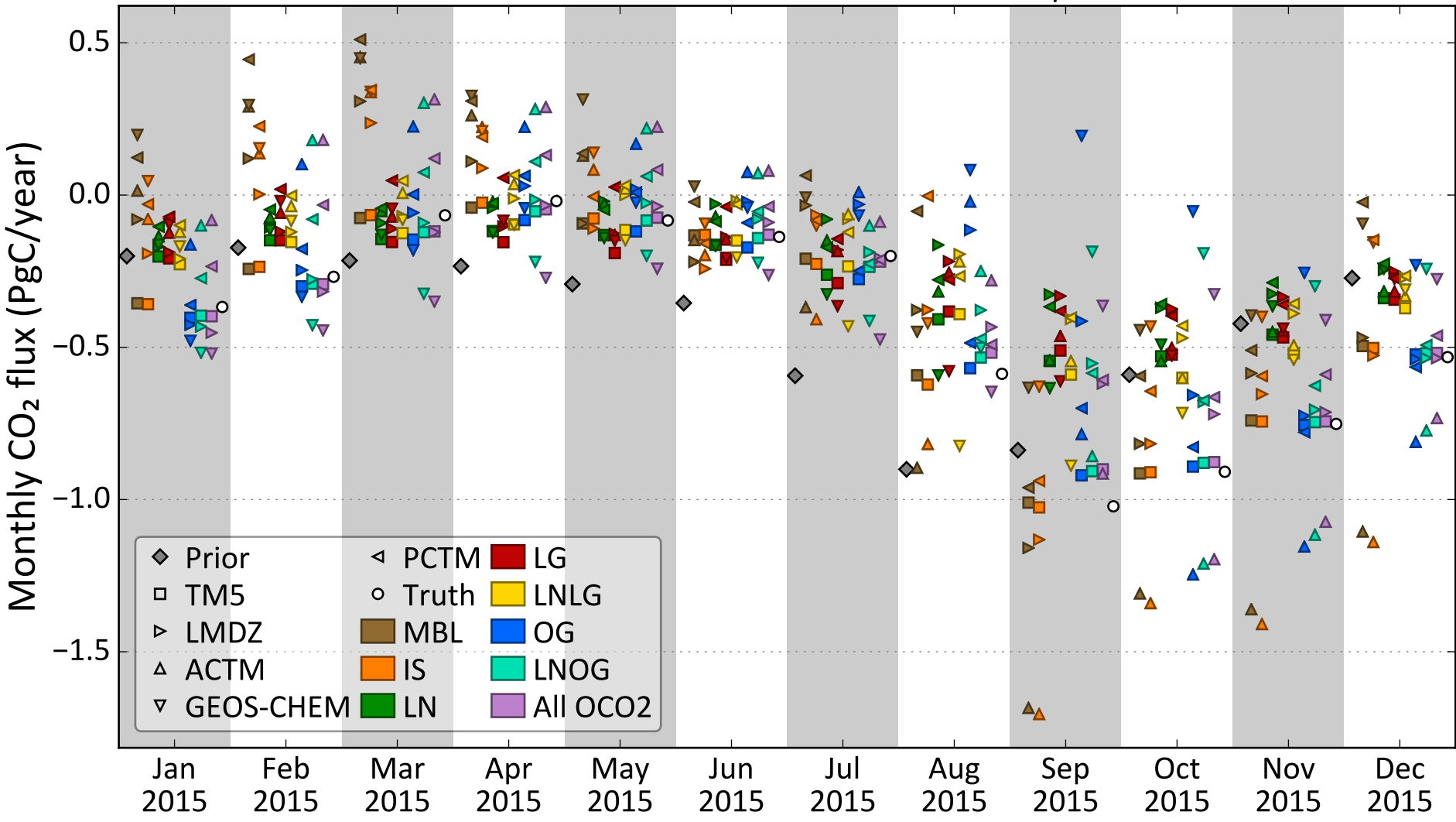
Oceanic CO₂ flux from North Pacific Temperate



Oceanic CO₂ flux from Northern Ocean

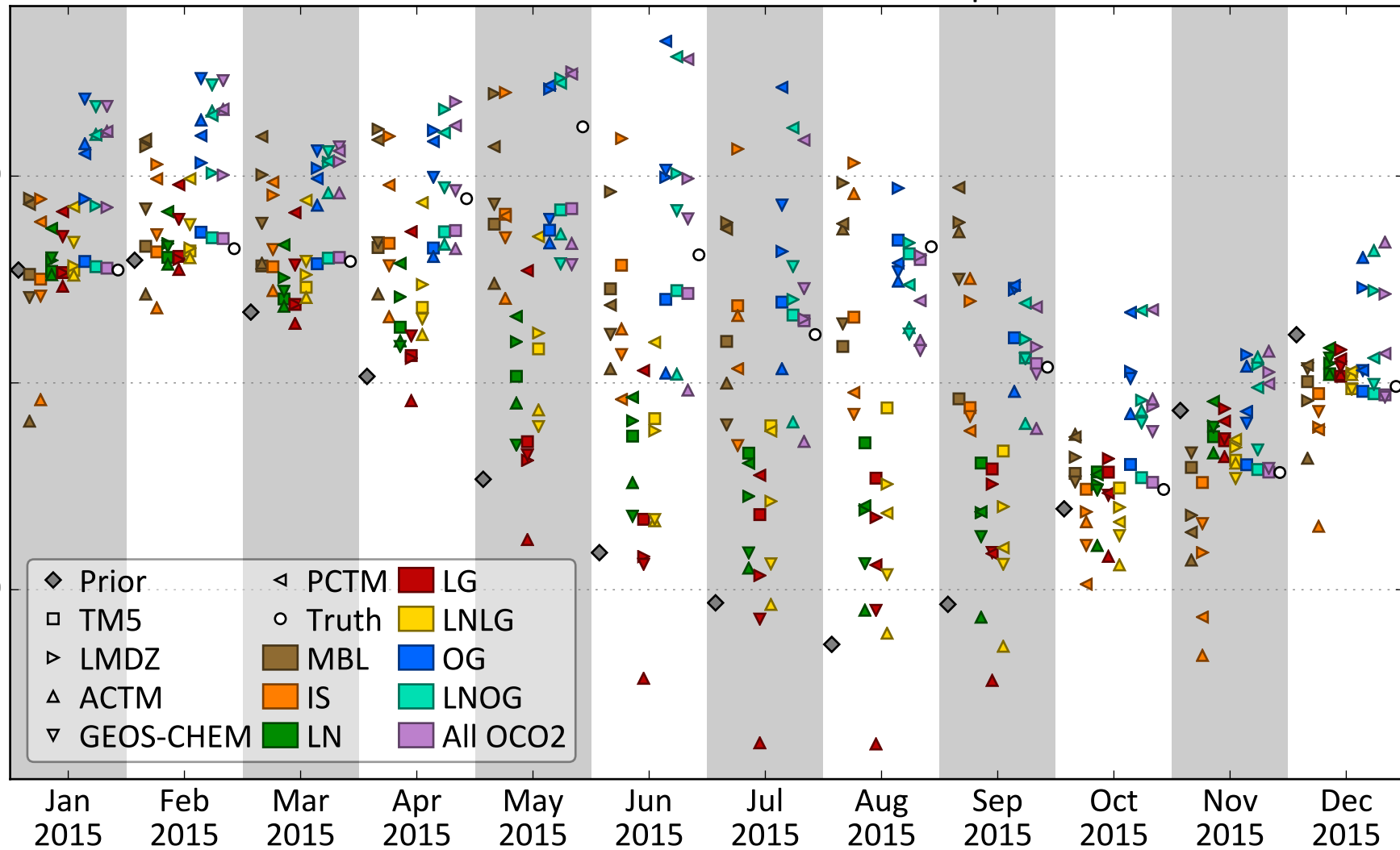


Oceanic CO₂ flux from South Atlantic Temperate

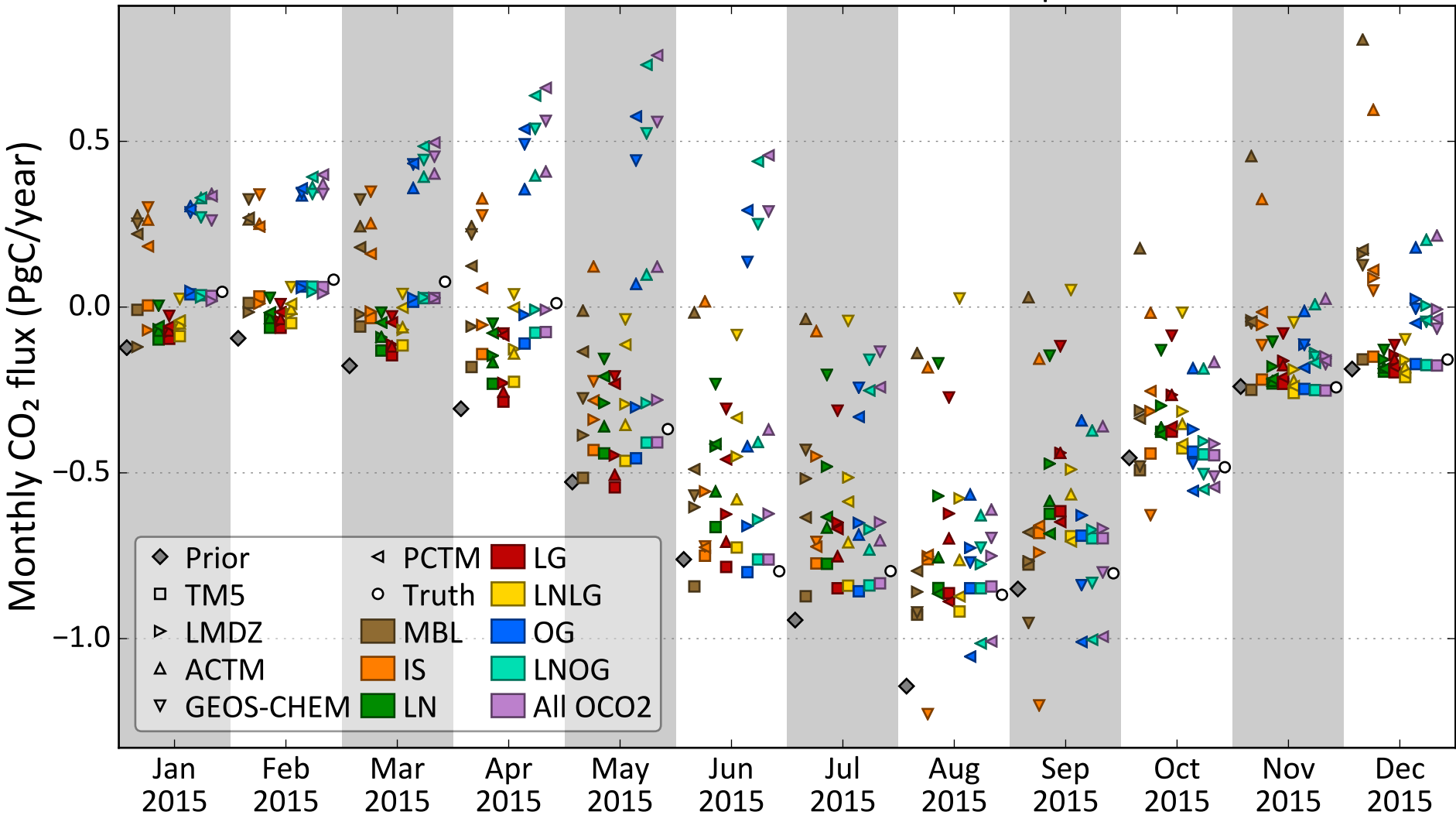


Oceanic CO₂ flux from South Indian Temperate

Monthly CO₂ flux (PgC/year)

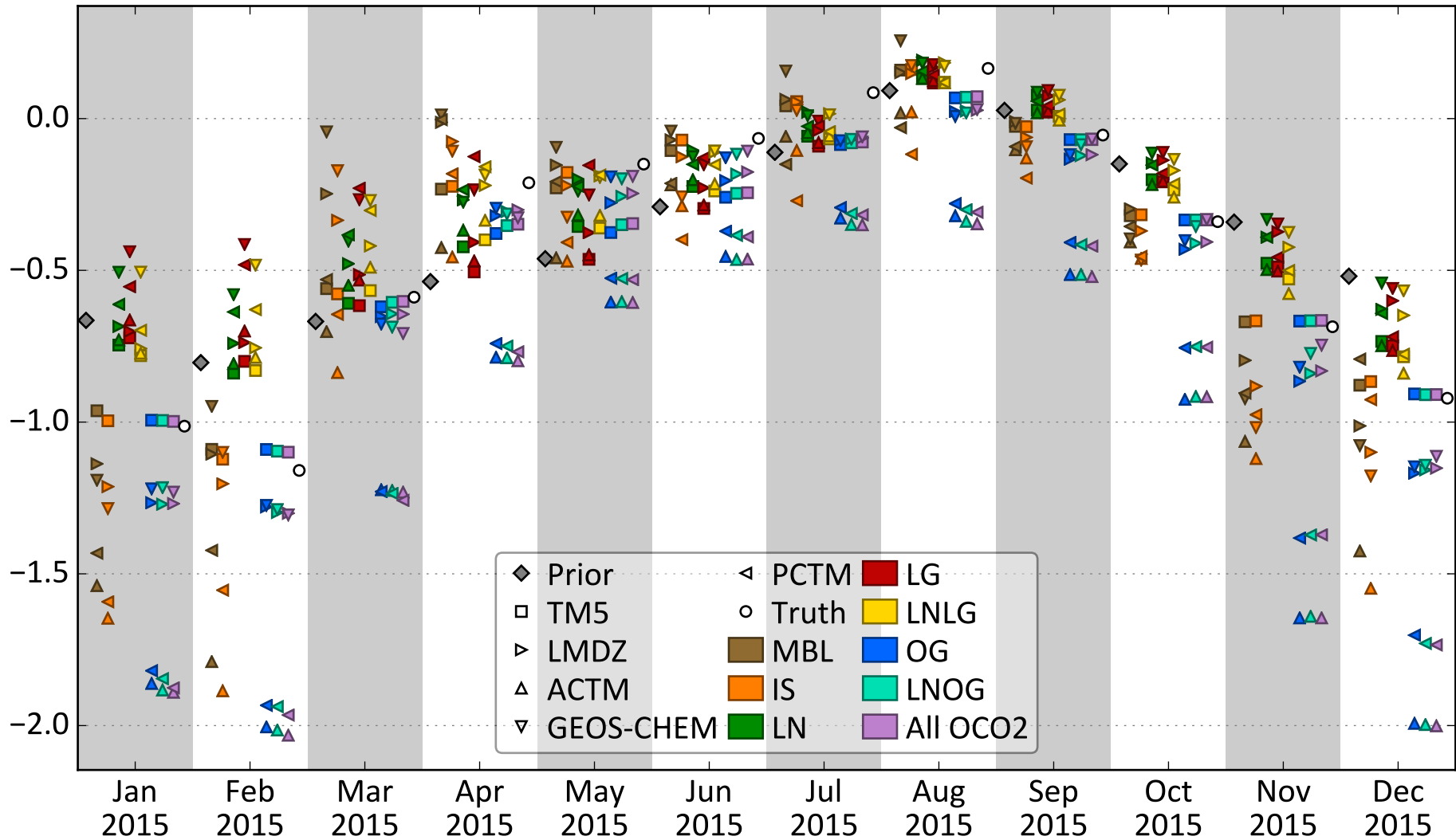


Oceanic CO₂ flux from South Pacific Temperate

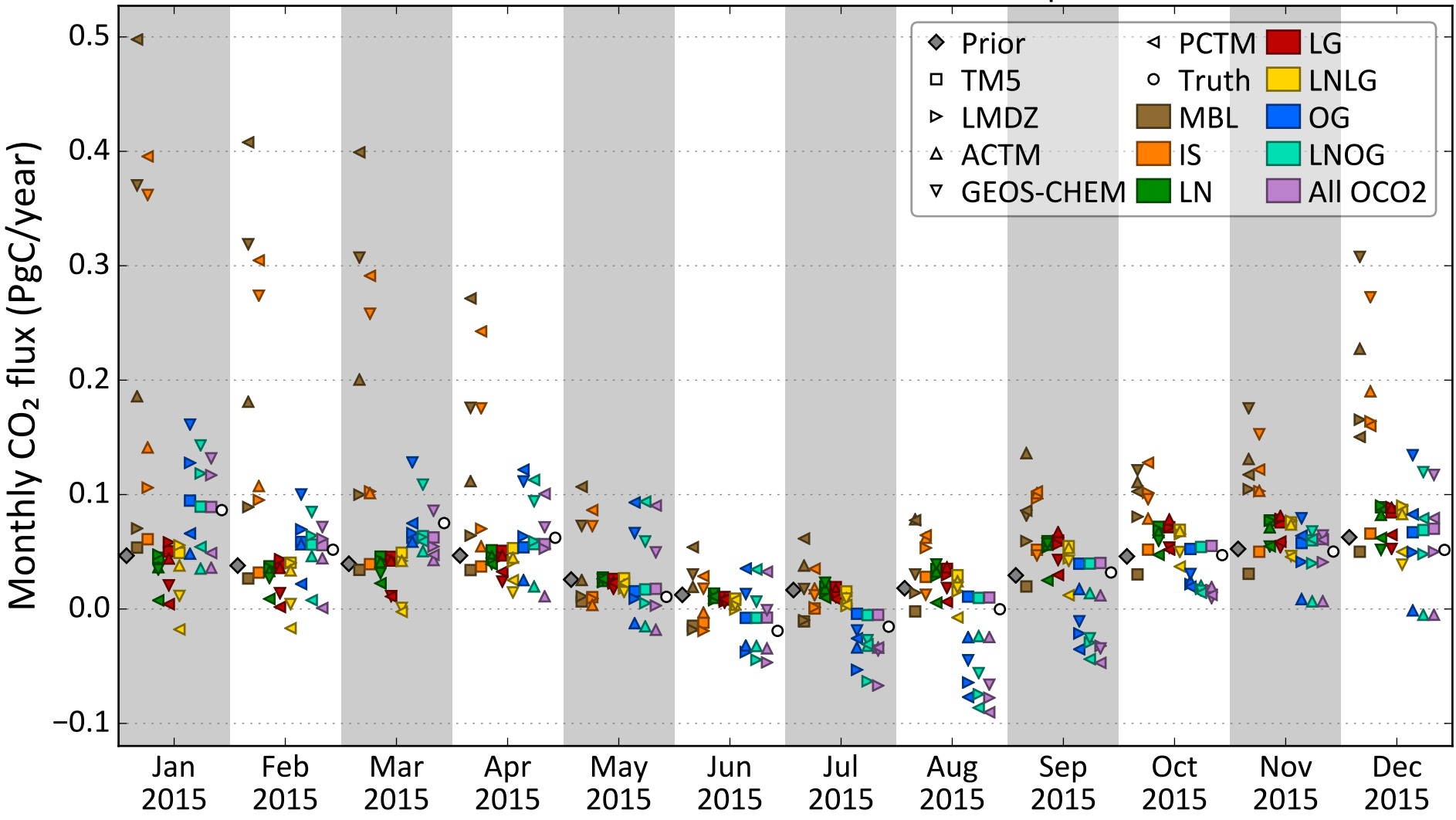


Oceanic CO₂ flux from Southern Ocean

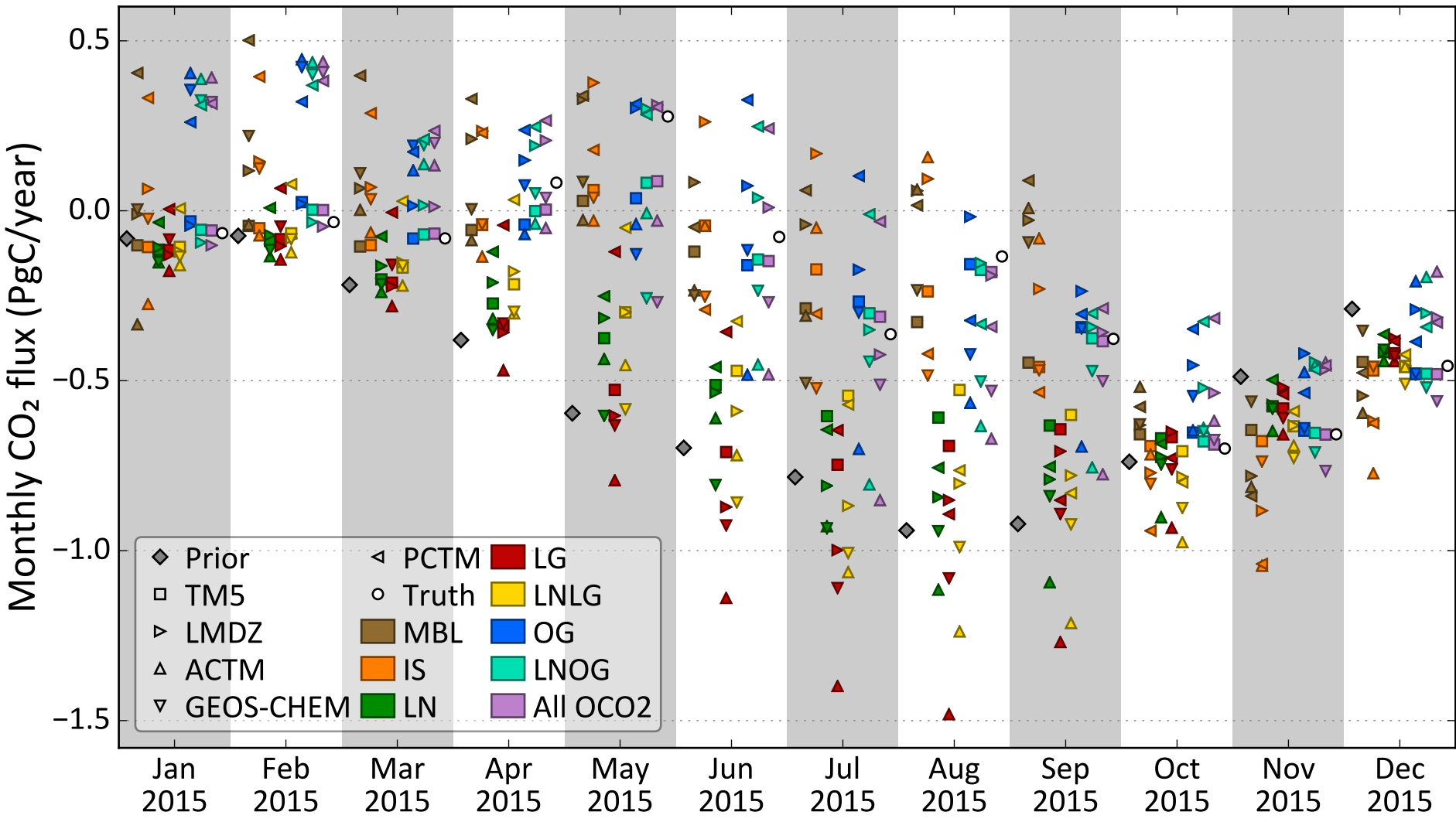
Monthly CO₂ flux (PgC/year)



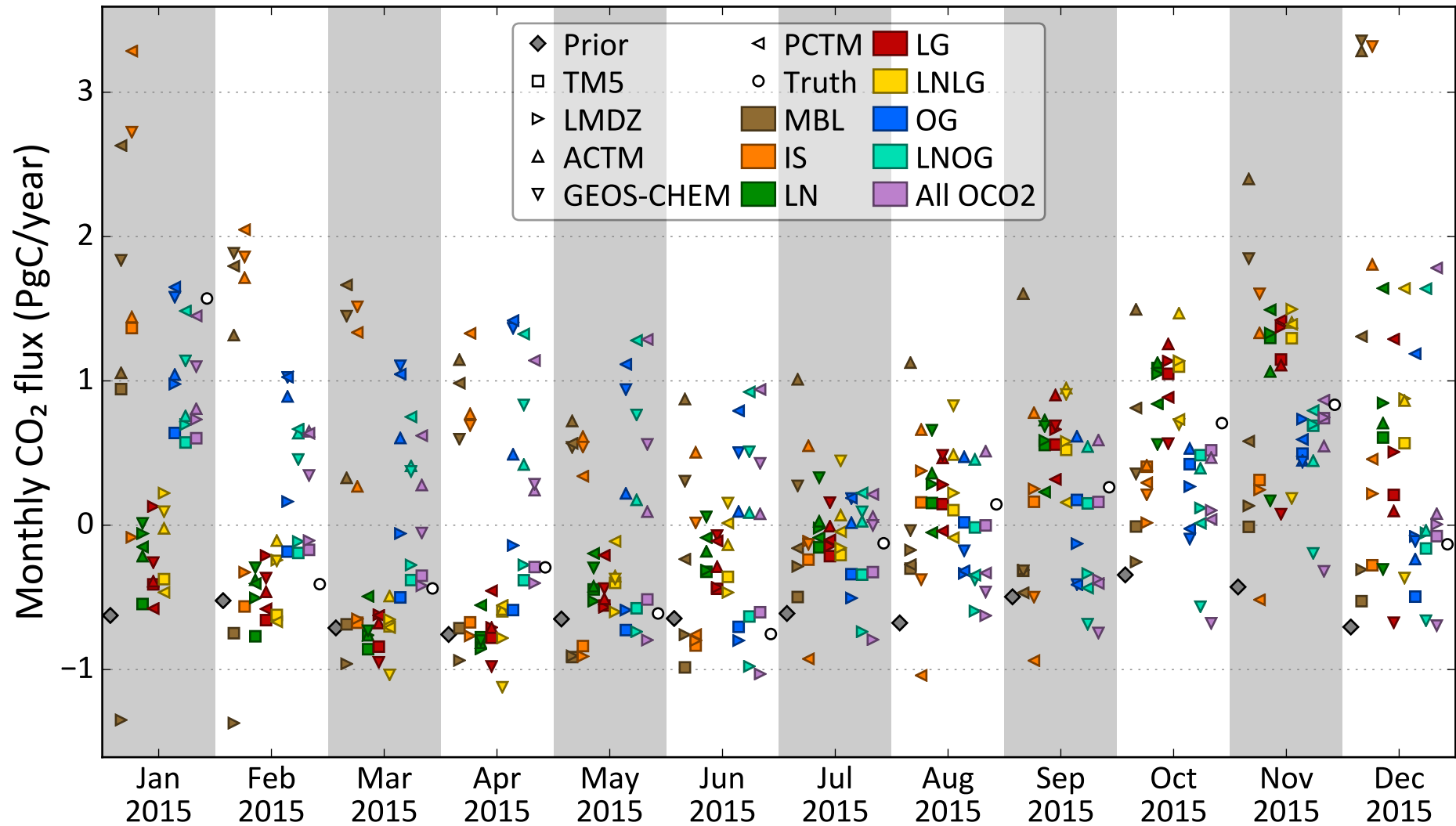
Oceanic CO₂ flux from West Pacific Tropics



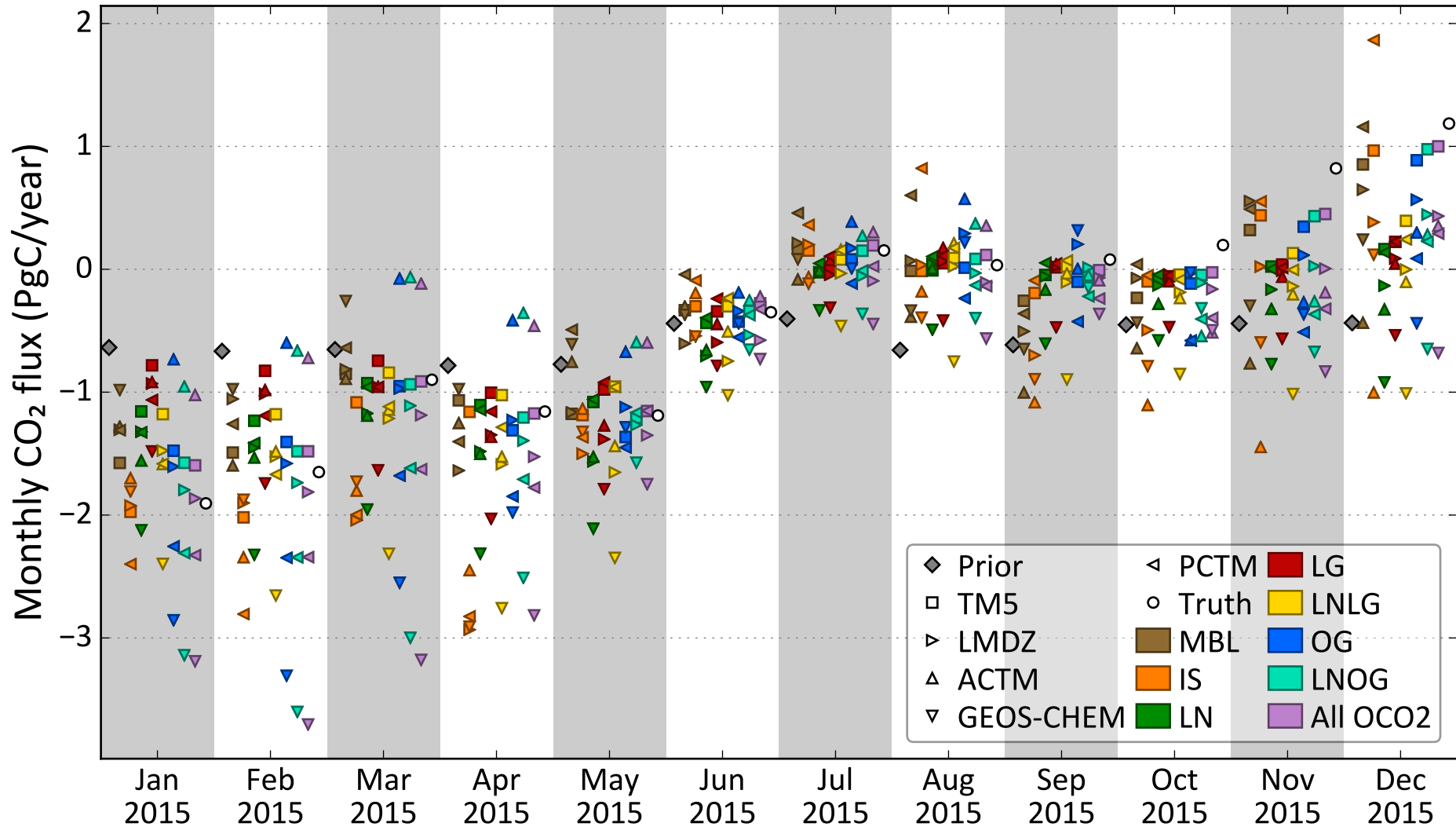
Oceanic CO₂ flux from Indian Ocean



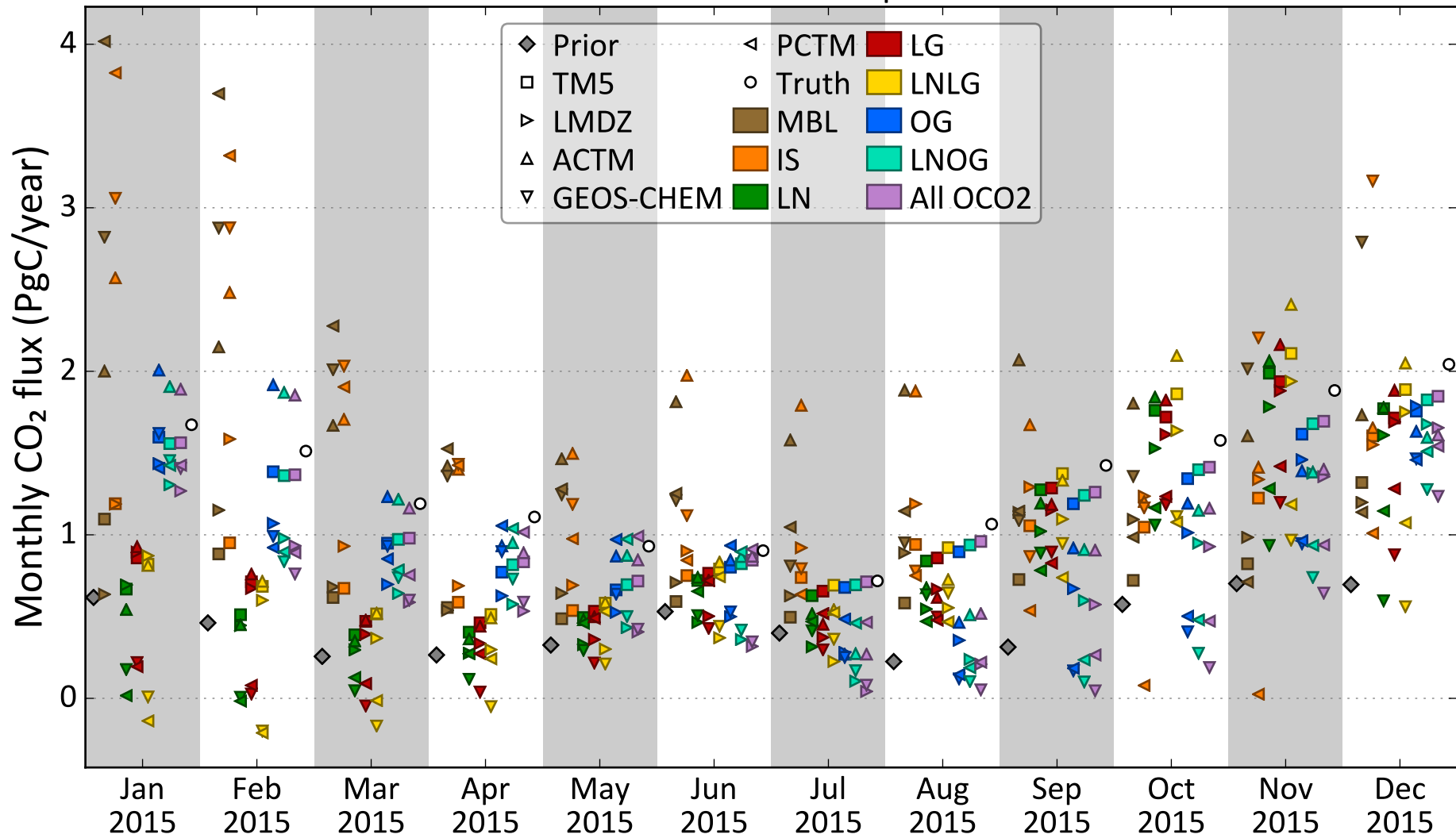
Oceanic CO₂ flux from Pacific Ocean



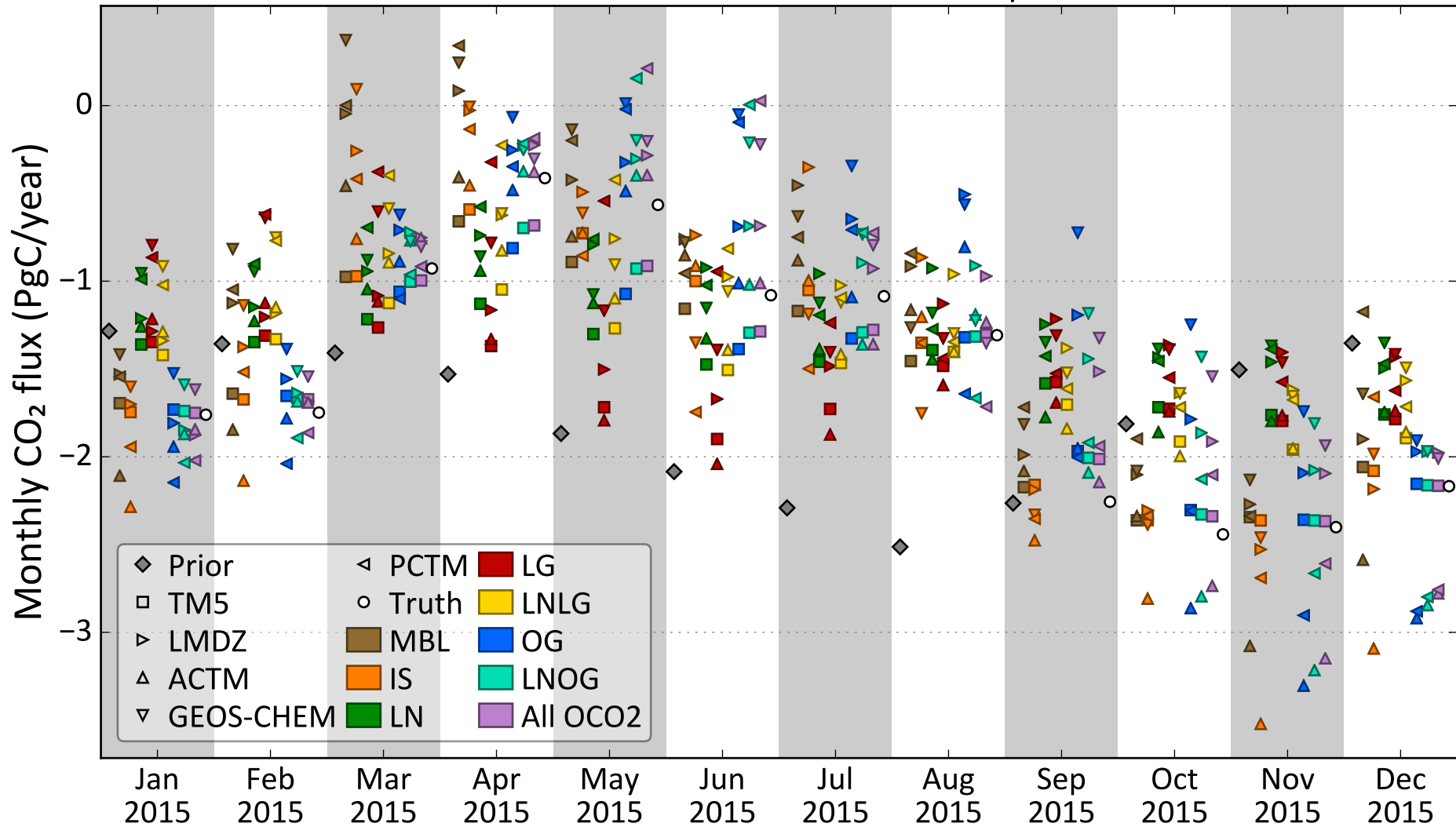
Oceanic CO₂ flux from Atlantic Ocean



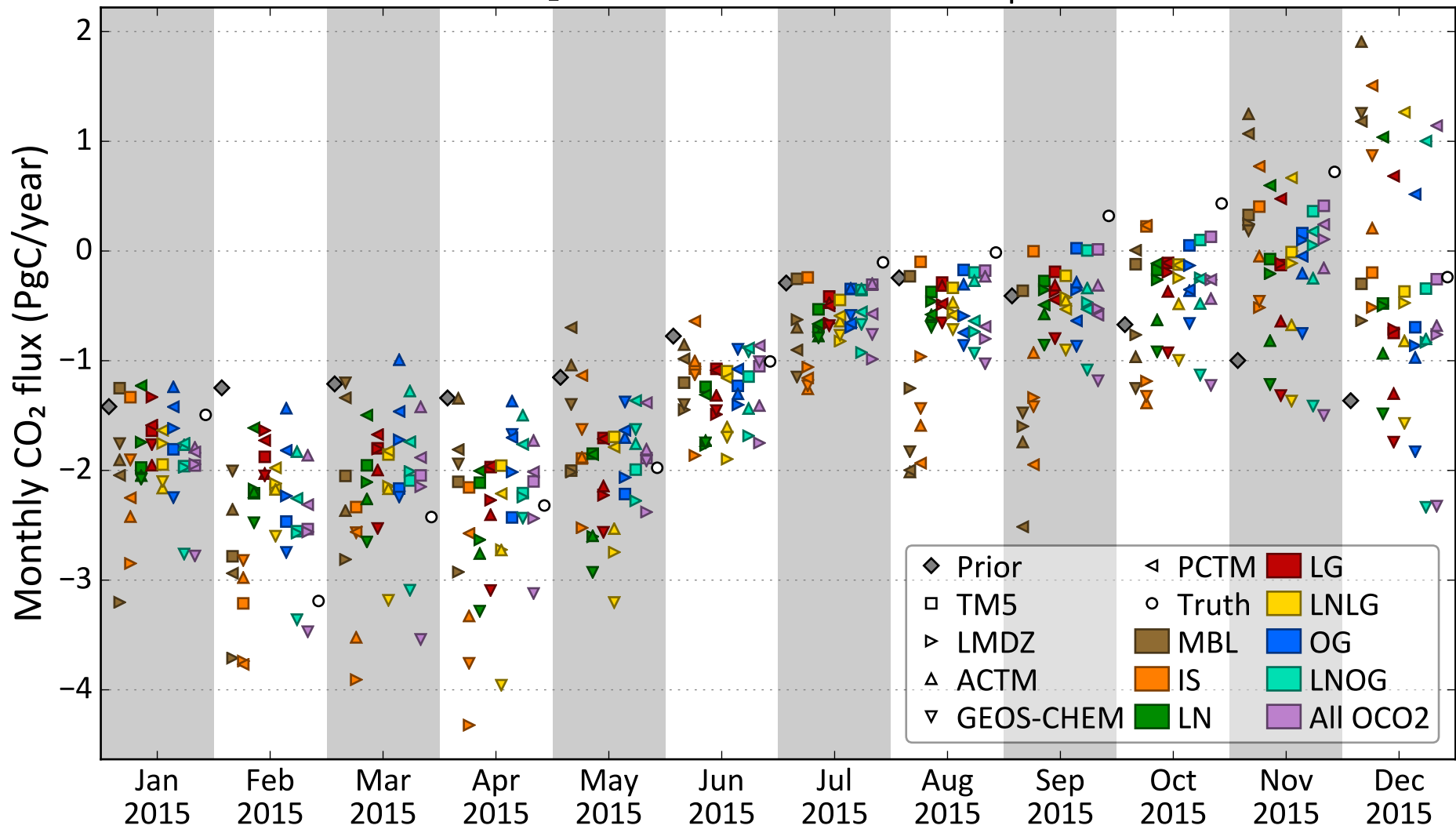
Oceanic CO₂ flux from Tropical Ocean



Oceanic CO₂ flux from Southern Extra-Tropical Ocean



Oceanic CO₂ flux from Northern Extra-Tropical Ocean



Oceanic CO₂ flux from Global Ocean

