

Supplement of Atmos. Chem. Phys., 18, 3269–3287, 2018
<https://doi.org/10.5194/acp-18-3269-2018-supplement>
© Author(s) 2018. This work is distributed under
the Creative Commons Attribution 3.0 License.



Supplement of

Organic functional groups in the submicron aerosol at 82.5° N, 62.5° W from 2012 to 2014

W. Richard Leaitch et al.

Correspondence to: W. Richard Leaitch (richard.leaitch@canada.ca)

The copyright of individual parts of the supplement might differ from the CC BY 3.0 License.

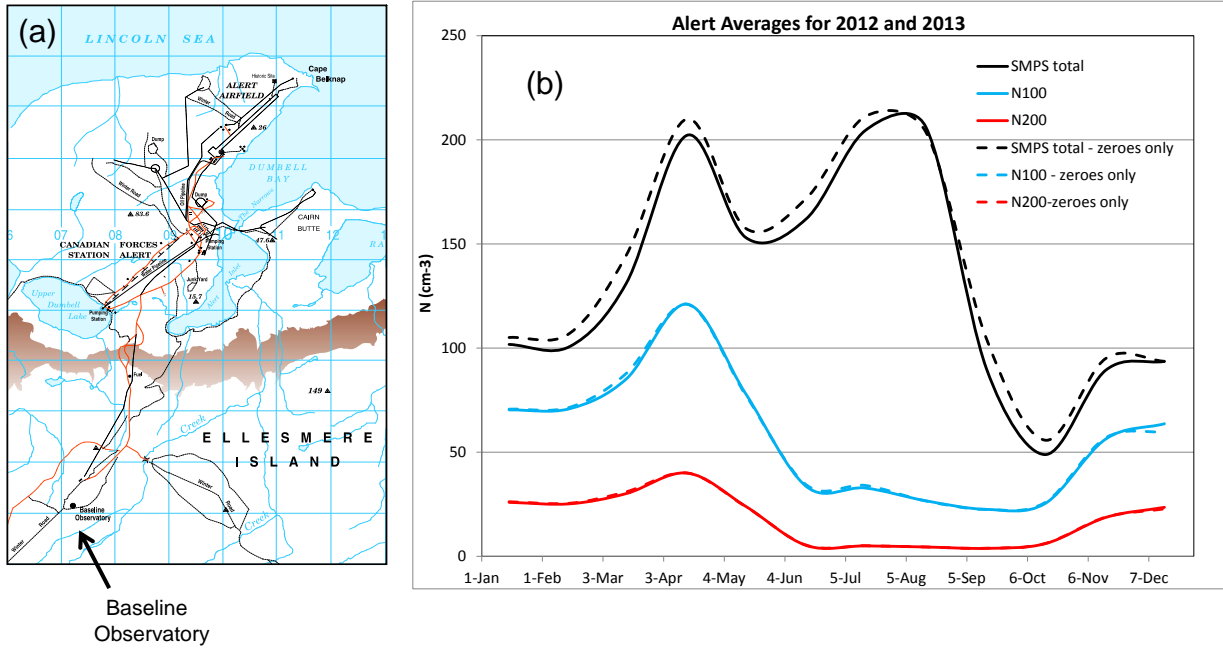


Figure S1. a) Location of Alert observatory relative to Alert station and air strip; b) monthly averages of number concentrations from SMPS with and without (zeroes only removed) the potential station influence removed (by wind sectoring and event removal). Variations in the volume estimated from the SMPS are represented by N200 (number concentrations of particles larger than 200 nm): N200 and volume correlate with a r^2 of 0.997.

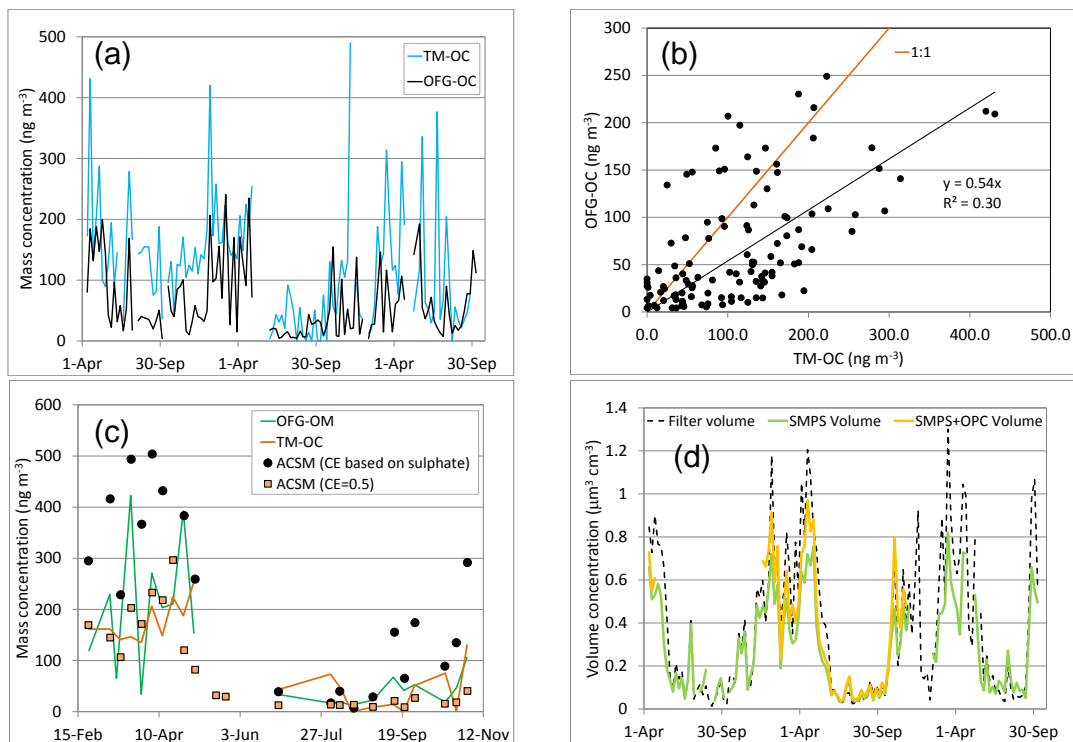


Figure S2. a) Time series of OC from the functional groups filter analyses (OFG-OC) and OC from the Thermal Method (TM-OC, including pyrolysis fraction). b) Regression of OFG-OC with TM-OC. The study average OFG-OC is about 60% of the TM-OC. c) Time series of OM from the functional group analyses (OFG-OM), TM-OC and OM from the ACSM. The ACSM OM are given for collection efficiencies (CE) of 0.5 and for a variable CE needed to account for filter SO_4^- (mean = 0.21). Linear regressions of OFG-OM versus ACSM-OM have slopes (CoD) of 0.52 (0.64) and 1.16 (0.46) for the sulphate-based CE and a constant CE of 0.5, respectively. d) Time series of volume concentrations estimated from the filters (equation 1), the SMPS (particles < 500 nm) and the SMPS+OPC (particles < 1 μm).

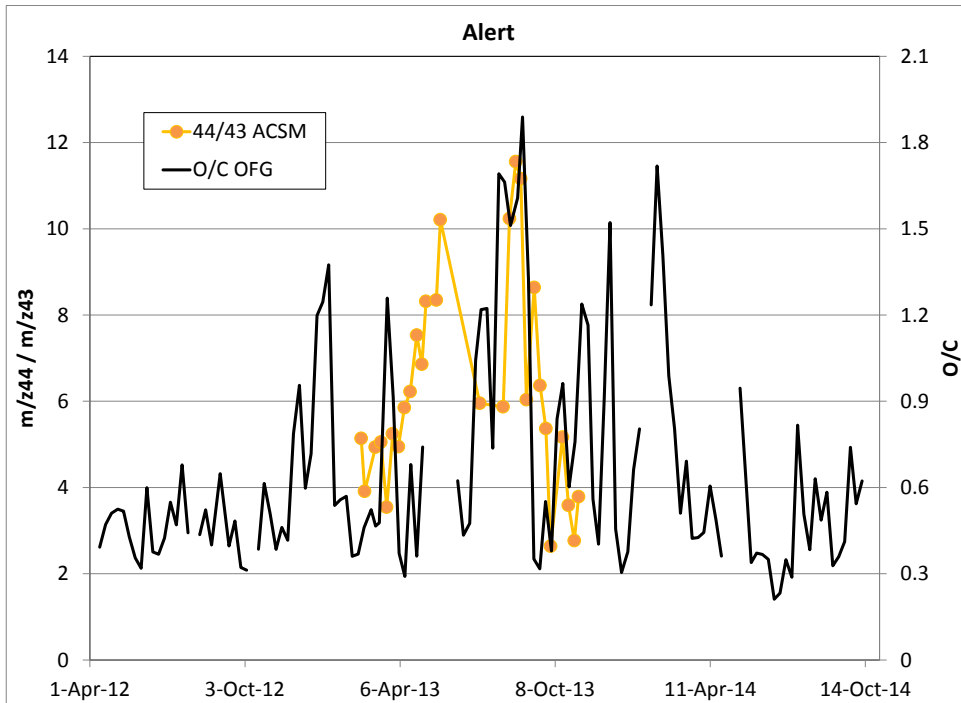


Figure S3. Time series of O/C calculated from the OFG as described in the text, and the ratio of m/z44 to m/z43 from the ACSM.

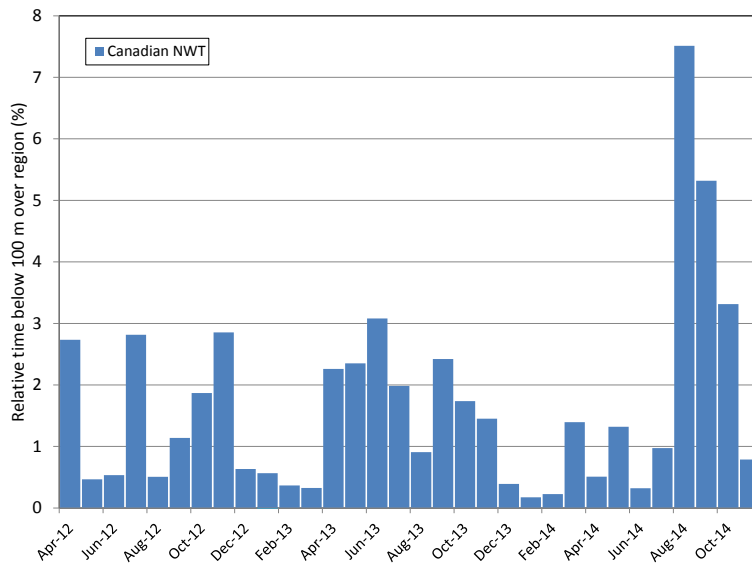


Figure S4. Monthly-averaged percentage of previous 10 days spent below 100 m over Canadian NWT. Results from the FLEXPART trajectory analyses.

Table S1. Weekly-based coefficients of determination (r^2) for particle mass concentration linear regressions with times spent over indicated regions. Values in bold indicate p of slope is <0.10. Values shaded gray indicate p of slope is <0.05. A minus sign in parentheses indicates a negative slope. Uncertainties in the times over regions are <75%.

Particle species	99 weeks with region 1	99 weeks with regions 1,4,6 and 7	30 dark [#] weeks with region 1	19 spring ^{&} weeks with region 1
nss-SO ₄ ⁼	0.07	0.05	0.04	0.19
EC	0.13	0.14	0.08	0.12
ss-Na ⁺	0.18	0.16	0.09	0.08
NO ₃ ⁻	0.04	0.03	0.00	0.01(-)
NH ₄ ⁺	0.03	0.03	0.05	0.00
nss-K ⁺	0.12	0.11	0.05	0.20
nss-Mg ⁺⁺	0.20	0.17	0.14	0.15
nss-Ca ⁺⁺	0.04	0.03	0.00	0.44
MSA	0.07(-)	0.08(-)	0.00	0.05(-)
OM	0.01	0.01	0.03	0.05(-)
Alkane groups	0.01(-)	0.01(-)	0.00	0.13(-)
Alcohol groups	0.05	0.03	0.05	0.05(-)
Acid groups	0.00	0.00	0.02	0.12(-)
Amine groups	0.12	0.10	0.15	0.09

- Weeks during all Novembers, Decembers, Januarys and Februarys.

& - Weeks during all March, April and May.

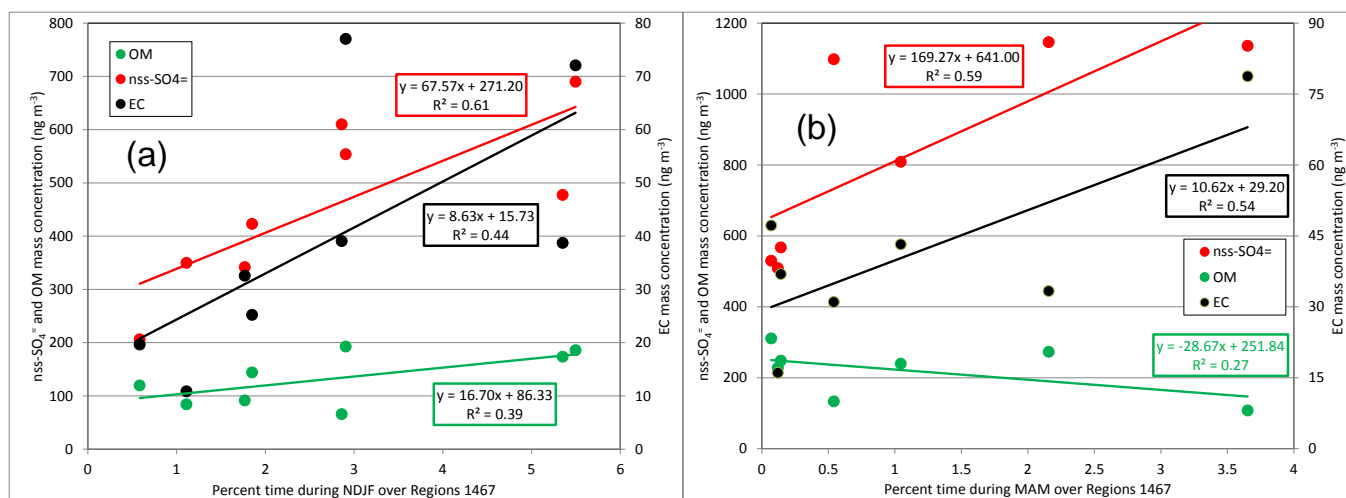


Figure S5. Plots of nss-SO₄, EC and OM versus time spent over Regions 1467 (see text for definition of regions): a) dark months (NDJF); b) spring months (MAM).

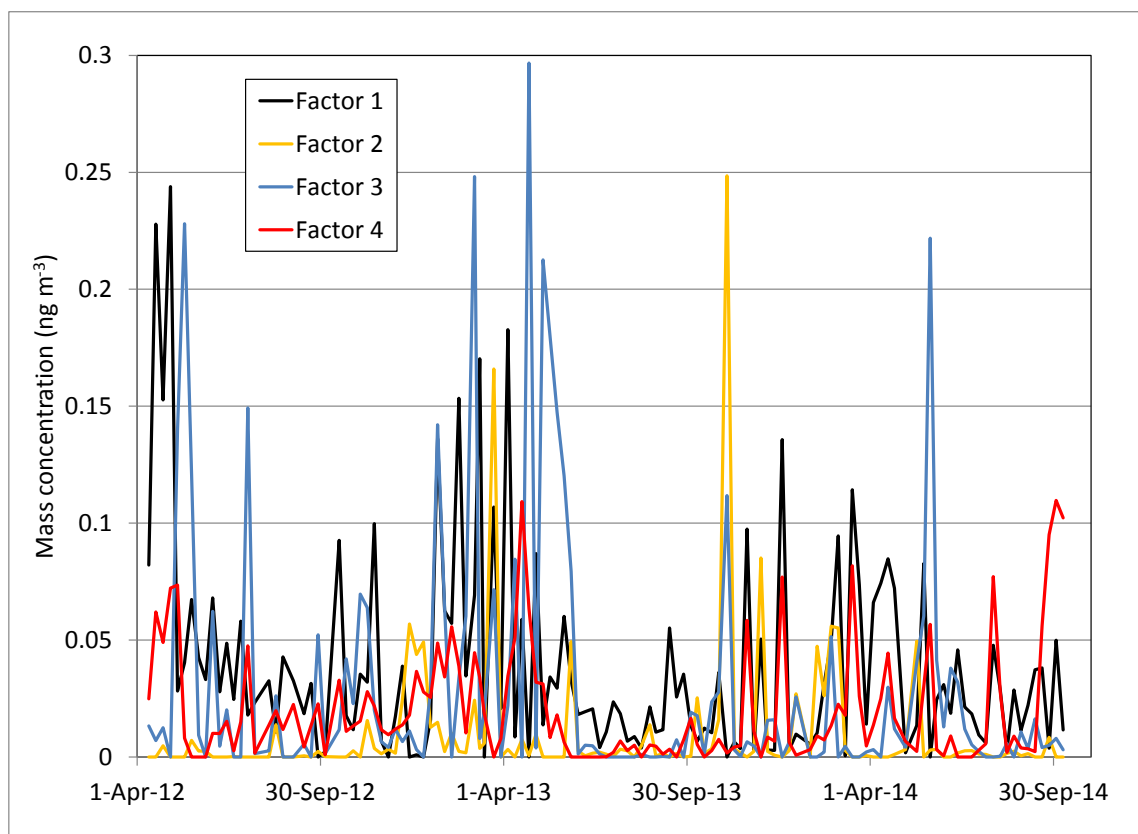


Figure S6. Time series of factor concentrations from PMF analysis.

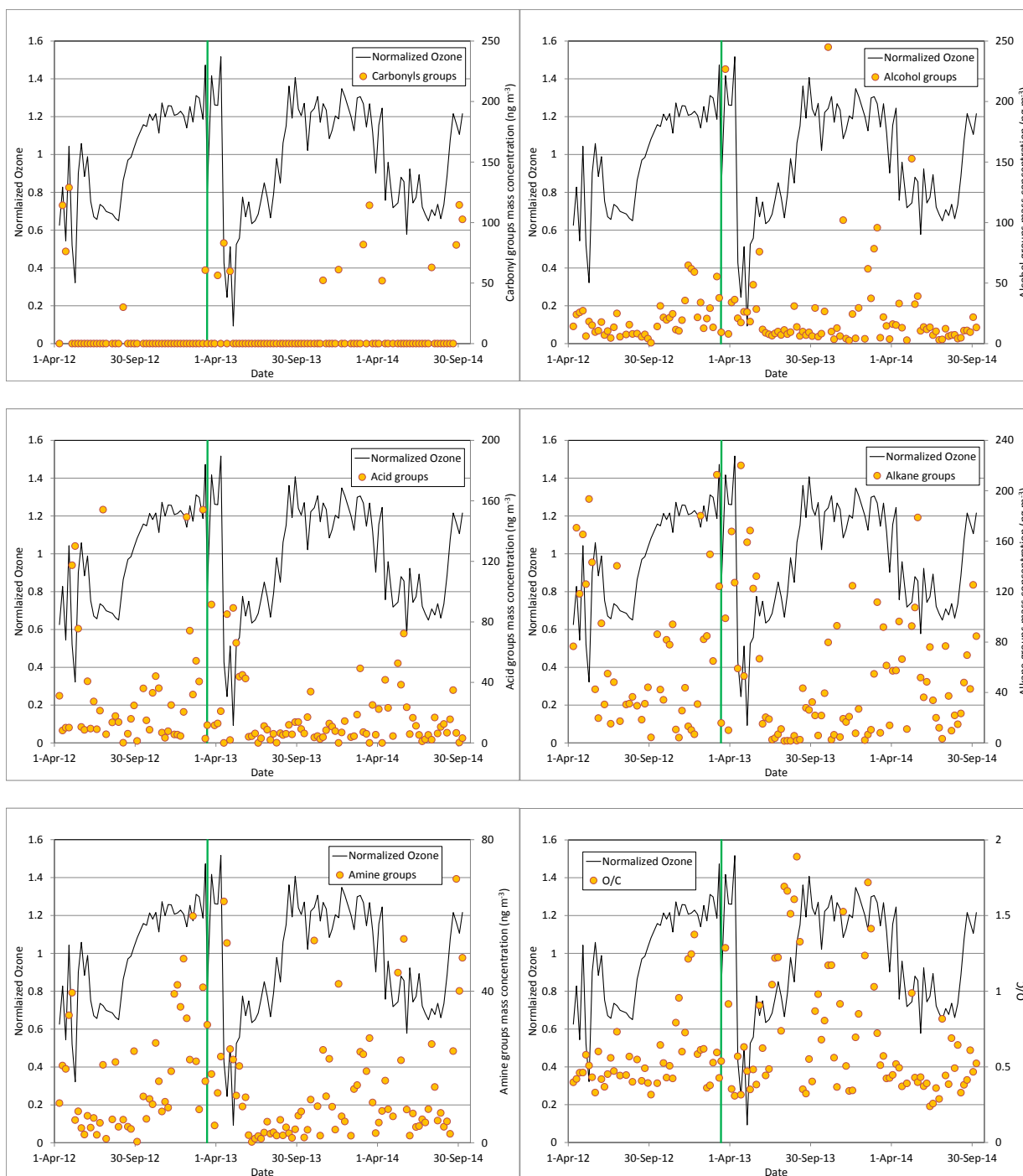


Figure S7. Time series of normalized ozone with carbonyl groups (a), alcohol groups (b), acid groups (c), alkane groups (d), amine groups (e) and O/C. All values are weekly averaged. The green line indicates time when problem with ozone inlet occurred (March 11, 2013). Ozone values before then are normalized to the average of values before March 11, 2013, and values after then are normalized to the average of values after March 11, 2013.

The following two files give the weekly averaged values of data used in the paper.

Mid-point Date	Alkane	Carbonyl	Amine	Acid	Alcohol	OM	OC	O/C	Cl-	NO2-	Br-	NO3-	SO4=
(d/m/y)	(ng/m3)	(ng/m3)	(ng/m3)	(ng/m3)	(ng/m3)	(ng/m3)	(ng/m3)	(ng/m3)	(ng/m3)	(ng/m3)	(ng/m3)	(ng/m3)	(ng/m3)
12/04/2012	76.61	0.00	10.45	31.12	14.17	132.36	80.52	0.40	1.67	0.87	4.68	7.37	938.00
19/04/2012	170.60	114.20	20.37	8.20	24.02	337.38	209.18	0.42	5.41	0.52	2.57	15.35	637.08
26/04/2012	118.25	76.12	19.48	10.06	25.71	249.61	148.68	0.46	5.27	0.41	4.17	12.83	884.65
04/05/2012	165.31	128.89	33.64	10.10	27.12	365.06	215.88	0.46	2.28	-0.12	2.31	14.39	640.65
11/05/2012	125.86	0.00	39.59	117.42	6.12	289.00	151.59	0.58	6.11	-0.12	4.13	20.31	722.57
18/05/2012	193.44	0.00	5.99	130.09	18.18	347.71	206.88	0.51	0.80	-0.12	2.09	5.65	530.54
25/05/2012	143.15	0.00	8.29	75.49	15.17	242.09	149.05	0.43	6.39	-0.12	1.07	3.45	259.03
01/06/2012	42.46	0.00	3.88	10.52	9.51	66.37	42.74	0.33	3.85	-0.12	-0.12	2.15	96.94
08/06/2012	19.64	0.00	2.16	8.63	10.62	41.05	22.50	0.60	0.68	-0.13	-0.13	0.61	61.73
15/06/2012	94.79	0.00	7.12	40.68	17.79	160.38	98.68	0.42	2.84	-0.13	-0.13	2.16	84.28
22/06/2012	30.50	0.00	3.98	9.46	7.04	50.97	31.59	0.37	2.30	-0.13	0.76	2.47	120.53
29/06/2012	54.95	0.00	6.52	27.36	10.28	99.12	58.86	0.45	2.27	-0.13	0.56	2.62	120.87
06/07/2012	15.19	0.00	2.09	9.05	4.58	30.90	17.20	0.56	-0.45	-0.13	-0.13	0.45	29.49
13/07/2012	48.14	0.00	5.25	21.28	13.41	88.08	51.87	0.47	1.28	-0.13	-0.13	2.14	62.89
20/07/2012	140.39	0.00	20.56	154.18	24.92	340.05	173.55	0.73	1.07	-0.13	0.40	1.73	146.31
27/07/2012	17.20	0.00	1.04	5.67	5.66	29.56	18.01	0.44	-0.47	-0.13	-0.13	-0.13	23.26
									-0.47	-0.13	-0.13	2.53	36.27
10/08/2012	30.42	0.00	6.15	13.56	7.48	57.61	33.32	0.45	5.93	-0.13	-0.13	4.02	47.53
17/08/2012	31.14	0.00	21.29	17.70	15.63	85.76	41.30	0.57	9.09	-0.13	-0.13	1.01	12.45
24/08/2012	36.47	0.00	4.21	13.75	7.90	62.34	38.14	0.40	1.02	-0.13	-0.13	1.54	39.07
03/09/2012	29.39	30.05	6.09	0.11	8.24	73.87	41.91	0.55	1.40	-0.13	-0.13	1.48	25.77
14/09/2012	18.42	0.00	4.22	6.03	5.54	34.20	19.99	0.41	1.27	-0.13	-0.13	0.78	13.41
21/09/2012	31.03	0.00	3.63	15.89	7.60	58.14	33.80	0.49	-0.47	-0.13	-0.13	0.31	28.43
28/09/2012	44.09	0.00	24.17	24.78	4.09	97.14	52.06	0.39	3.22	-0.14	-0.14	3.91	56.17
05/10/2012	4.34	0.00	0.29	1.28	0.65	6.56	4.31	0.32	4.13	-0.13	-0.13	2.00	37.64
12/10/2012									6.24	-0.13	-0.13	3.67	26.69
19/10/2012	86.14	0.00	12.21	36.00	14.12	148.47	90.45	0.39	4.10	-0.14	-0.14	4.71	32.82
26/10/2012	42.28	0.00	6.29	14.90	31.11	94.58	50.05	0.64	28.41	-0.13	-0.13	5.85	96.72
02/11/2012	34.14	0.00	11.55	8.69	21.57	75.95	40.36	0.52	7.17	-0.14	-0.14	4.23	76.58
09/11/2012	81.69	0.00	10.15	33.10	19.56	144.49	86.72	0.43	24.98	-0.14	0.40	8.79	336.91
16/11/2012	77.88	0.00	26.32	44.09	21.34	169.63	91.26	0.51	17.80	-0.14	-0.14	7.02	196.03
23/11/2012	94.01	0.00	16.22	36.11	24.51	170.85	101.03	0.42	10.33	2.46	0.39	8.48	379.02
30/11/2012	10.64	0.00	8.24	6.75	11.51	37.14	16.17	0.79	51.24	-0.14	0.54	16.06	82.14
07/12/2012	4.17	0.00	10.82	3.39	10.50	28.86	10.16	0.96	63.22	-0.14	-0.14	15.65	97.05
14/12/2012	25.59	0.00	9.26	7.71	19.33	61.89	31.56	0.60	43.23	-0.14	0.35	27.36	203.86
21/12/2012	43.73	0.00	18.86	25.02	35.59	123.20	58.58	0.73	65.31	1.35	0.99	26.44	638.46
28/12/2012	13.15	0.00	39.29	5.57	64.65	122.65	40.33	1.21	214.50	0.94	1.95	26.94	580.84
04/01/2013	10.17	0.00	41.66	5.48	61.79	119.10	37.66	1.25	140.34	1.94	1.84	11.23	713.78

11/01/2013	6.85	0.00	35.86	4.58	59.11	106.40	32.29	1.37	151.81	1.27	2.40	13.09	436.37
18/01/2013	30.76	0.00	48.59	20.48	21.62	121.45	50.72	0.58	115.06	1.68	7.30	11.20	691.89
25/01/2013	180.21	0.00	32.85	149.27	33.94	396.28	212.09	0.61	25.73	2.95	6.95	24.51	1093.64
01/02/2013	82.13	0.00	21.94	74.20	12.62	190.90	99.46	0.62	19.54	1.48	9.42	10.78	700.60
08/02/2013	84.76	0.00	59.84	31.96	20.69	197.26	102.90	0.36	55.23	1.38	3.55	19.91	683.74
15/02/2013	149.54	0.00	21.49	54.25	29.22	254.50	156.12	0.38	4.15	-0.14	0.60	16.35	273.16
22/02/2013	64.95	0.00	8.79	40.56	13.41	127.71	72.38	0.53	3.40	1.74	1.54	8.94	641.27
02/03/2013	212.67	0.00	41.02	154.10	55.35	463.15	249.01	0.59	39.96	0.87	3.84	16.17	624.25
08/03/2013	124.16	60.60	16.24	2.84	37.74	241.58	147.43	0.43	5.95	0.89	1.03	12.07	645.51
12/03/2013	15.77	0.00	31.14	11.72	9.31	67.93	27.56	0.54	277.67	0.73	3.80	27.89	359.51
22/03/2013	98.81	0.00	18.14	91.45	226.73	435.13	173.18	1.29	16.72	-0.15	2.03	22.78	589.64
29/03/2013	10.08	0.00	4.55	11.59	7.95	34.17	15.05	0.92	4.07	-0.14	2.24	16.87	759.27
05/04/2013	167.69	56.34	13.13	12.81	34.02	283.99	183.75	0.35	3.64	0.97	3.01	9.62	1274.50
12/04/2013	127.11	0.00	22.75	20.97	36.29	207.11	130.21	0.31	111.68	-0.14	3.20	30.10	888.16
19/04/2013	59.01	83.07	63.70	0.00	20.91	226.69	109.01	0.57	98.76	1.38	4.69	23.10	1524.72
26/04/2013	220.07	0.00	52.71	85.09	17.41	375.27	230.24	0.32	71.15	0.59	3.91	64.20	1084.33
03/05/2013	53.03	59.78	24.71	1.88	26.25	165.66	85.16	0.63	25.02	-0.14	2.11	14.11	1081.52
10/05/2013	159.10	0.00	21.95	89.16	26.03	296.24	172.93	0.47	21.50	-0.14	2.30	25.36	721.76
17/05/2013	168.43	0.00	12.46	66.10	18.14	265.13	170.12	0.35	8.67	-0.14	0.81	16.07	460.59
24/05/2013	122.35	0.00	20.25	43.76	48.61	234.97	134.75	0.48	20.49	-0.14	0.65	13.91	260.97
31/05/2013	132.14	0.00	9.55	44.95	28.52	215.15	135.29	0.38	14.01	-0.14	-0.14	9.27	292.92
07/06/2013	66.75	0.00	11.99	42.54	75.88	197.17	91.63	0.91	12.06	-0.13	-0.13	8.78	175.37
14/06/2013	15.10	0.00	1.99	4.04	11.64	32.76	17.59	0.62	3.36	-0.13	-0.13	2.03	82.49
21/06/2013	20.32	0.00	0.21	4.43	8.81	33.76	20.95	0.44	0.90	-0.13	-0.13	0.88	78.93
28/06/2013	18.87	0.00	1.09	6.26	7.65	33.87	20.14	0.49	2.25	-0.12	-0.12	1.29	34.27
05/07/2013	2.53	0.00	1.75	0.00	6.51	10.79	4.34	1.04	1.06	-0.16	-0.16	0.41	7.96
12/07/2013	3.79	0.00	1.07	3.00	8.35	16.20	6.51	1.22	0.73	-0.13	-0.13	0.86	19.99
19/07/2013	6.81	0.00	2.69	11.10	9.97	30.56	12.13	1.22	-0.48	-0.13	-0.13	0.38	50.93
26/07/2013	10.98	0.00	5.56	8.71	7.11	32.35	15.10	0.74	13.37	-0.13	-0.13	2.65	55.31
02/08/2013	1.56	0.00	2.37	1.96	11.20	17.09	5.43	1.69	3.21	-0.13	-0.13	0.73	8.53
09/08/2013	1.68	0.00	2.75	6.00	7.77	18.19	5.81	1.66	2.81	-0.14	-0.14	0.66	14.98
16/08/2013	1.62	0.00	1.90	0.12	9.44	13.08	4.40	1.51	6.26	-0.14	-0.14	0.70	19.01
24/08/2013	5.61	0.00	6.02	6.41	30.94	48.98	16.23	1.61	9.17	4.61	-0.13	3.34	36.02
30/08/2013	1.77	0.00	1.94	5.20	13.71	22.62	7.01	1.89	1.59	-0.11	-0.11	1.16	20.09
06/09/2013	2.54	0.00	4.06	6.02	6.29	18.90	6.53	1.33	3.03	-0.15	-0.15	1.51	71.86
13/09/2013	43.38	0.00	2.49	11.89	9.87	67.64	43.61	0.35	1.00	-0.13	-0.13	0.28	117.46
20/09/2013	27.74	0.00	1.29	5.65	6.98	41.66	27.45	0.32	1.26	-0.13	-0.13	0.39	52.35
27/09/2013	26.14	0.00	3.54	13.73	9.30	52.71	29.46	0.55	-0.49	-0.14	-0.14	0.49	88.23
04/10/2013	32.33	0.00	7.15	13.80	6.11	59.40	34.94	0.40	8.20	-0.13	-0.13	1.57	37.36
10/10/2013	21.80	0.00	8.24	9.15	29.36	68.55	31.03	0.87	53.98	-0.16	-0.16	5.66	52.25
17/10/2013	5.87	0.00	1.37	6.22	5.68	19.14	8.54	0.98	2.48	-0.11	-0.11	1.22	65.39
25/10/2013	21.68	0.00	3.41	16.98	8.19	50.25	26.17	0.68	13.27	1.73	-0.13	3.49	185.82
01/11/2013	39.40	0.00	11.38	33.87	26.56	111.21	52.84	0.81	40.21	0.91	-0.13	6.08	390.77

09/11/2013	79.73	0.00	53.37	3.60	244.91	381.61	147.74	1.17	514.18	-0.10	0.78	27.51	449.60
16/11/2013	2.56	0.00	9.61	4.50	9.88	26.56	8.60	1.17	50.53	-0.15	-0.15	14.80	249.65
22/11/2013	6.44	0.00	1.88	2.52	3.57	14.40	7.63	0.56	39.78	-0.15	0.60	12.00	452.08
29/11/2013	92.87	52.20	24.51	3.81	12.78	186.17	113.01	0.37	14.33	1.49	0.77	7.88	734.82
06/12/2013	4.65	0.00	12.27	8.37	6.14	31.43	11.17	0.92	39.31	1.77	0.65	17.74	537.13
13/12/2013	19.14	0.00	22.16	12.76	101.95	156.01	52.45	1.53	68.15	2.47	1.24	10.05	637.47
19/12/2013	16.57	0.00	9.50	10.73	4.08	40.88	20.72	0.51	85.00	-0.15	5.31	13.80	453.18
26/12/2013	20.75	0.00	3.46	7.79	2.54	34.54	21.47	0.34	9.76	0.64	2.89	4.50	906.07
03/01/2014	124.63	61.10	41.91	0.00	24.37	252.02	150.81	0.34	11.75	0.77	3.48	5.42	1090.98
10/01/2014	7.61	0.00	6.97	6.90	4.31	25.79	11.39	0.69	28.60	0.40	1.33	7.88	182.66
17/01/2014	26.93	0.00	5.61	14.37	29.42	76.33	36.12	0.85	22.01	-0.13	0.27	14.39	87.01
24/01/2014									27.97	-0.13	9.91	5.09	250.87
31/01/2014	2.17	0.00	1.85	3.82	3.93	11.76	4.41	1.24	8.33	-0.13	2.79	2.16	38.01
07/02/2014	6.62	0.00	14.17	4.46	61.73	86.98	26.83	1.72	117.70	-0.13	16.57	12.65	181.33
14/02/2014	10.39	0.00	15.20	18.66	37.32	81.57	27.76	1.41	32.66	-0.13	1.71	14.11	337.02
21/02/2014	54.68	0.00	24.00	49.21	78.35	206.24	86.98	1.03	61.64	-0.13	2.50	20.22	563.82
28/02/2014	111.59	81.81	23.36	7.15	95.71	319.61	163.95	0.72	16.74	1.02	3.86	9.38	948.82
07/03/2014	7.98	0.00	18.88	5.97	4.78	37.62	14.83	0.51	54.04	1.63	3.42	12.49	712.90
14/03/2014	91.78	114.27	27.61	0.00	21.84	255.50	140.87	0.57	8.36	0.75	3.04	7.50	1646.37
21/03/2014	61.36	0.00	10.63	25.02	14.55	111.56	65.96	0.42	4.71	0.53	3.48	3.96	1229.53
28/03/2014	13.92	0.00	2.55	5.41	3.67	25.55	15.03	0.43	35.20	1.24	4.21	10.89	1059.61
04/04/2014	57.14	0.00	5.32	22.30	16.06	100.83	60.56	0.45	7.08	0.28	3.15	11.03	842.68
11/04/2014	57.45	51.90	8.38	0.00	15.33	133.06	77.77	0.52	18.51	0.39	2.66	7.28	938.64
18/04/2014	96.31	0.00	16.39	41.64	33.12	187.47	106.77	0.49	78.62	-0.14	6.00	21.30	1357.75
25/04/2014	66.43	0.00	8.85	23.17	13.07	111.51	68.94	0.37	16.75	-0.13	2.74	6.48	1379.00
06/05/2014	10.99	0.00	6.96	4.51	2.83	25.30	13.26	0.39	7.72	-0.12	1.70	10.88	474.73
17/05/2014	92.64	0.00	44.90	52.60	152.71	342.84	145.51	0.99	2.76	-0.15	1.24	4.47	870.38
24/05/2014	107.37	0.00	21.77	38.43	32.59	200.17	116.72	0.43					
30/05/2014	178.73	0.00	53.79	72.28	39.11	343.92	197.35	0.40	11.46	0.89	0.36	9.31	219.08
06/06/2014	51.82	0.00	8.76	23.54	10.57	94.69	55.84	0.43	-0.46	1.77	-0.13	-0.13	82.28
13/06/2014	36.15	0.00	1.88	5.81	13.63	57.48	36.61	0.37	1.63	0.77	0.72	1.55	277.81
20/06/2014	48.41	0.00	7.71	16.61	11.70	84.44	51.08	0.39	1.54	1.18	-0.12	1.95	80.47
27/06/2014	75.98	0.00	4.15	11.31	13.41	104.85	72.77	0.24	-0.55	1.23	-0.15	-0.15	110.72
04/07/2014	33.76	0.00	4.39	5.27	6.94	50.36	33.35	0.26	3.57	-0.12	-0.12	5.45	51.59
11/07/2014	19.90	0.00	6.17	1.08	10.08	37.23	21.66	0.36	1.82	-0.12	-0.12	1.82	74.55
18/07/2014	11.98	0.00	5.34	2.35	3.03	22.70	13.14	0.29	0.99	-0.13	-0.13	1.60	33.63
25/07/2014	3.25	0.00	8.86	5.27	3.41	20.79	7.50	0.82	3.93	-0.12	-0.12	1.92	19.69
01/08/2014	76.81	62.85	26.04	2.06	12.27	180.02	103.62	0.44	2.22	0.29	-0.11	1.12	42.56
08/08/2014	37.22	0.00	14.72	16.76	6.09	74.79	41.98	0.38	1.59	1.81	-0.15	2.59	26.91
15/08/2014	9.69	0.00	5.86	6.21	6.88	28.64	13.36	0.69	2.22	-0.12	-0.12	1.18	21.32
22/08/2014	21.82	0.00	7.86	10.59	7.21	47.47	25.55	0.49	3.65	-0.12	-0.12	1.26	23.92

29/08/2014	14.74	0.00	4.19	12.48	4.05	35.46	18.16	0.64	2.45	-0.12	-0.12	0.80	28.04
05/09/2014	23.33	0.00	5.63	6.72	4.75	40.43	24.56	0.33	1.60	-0.12	-0.12	0.73	30.63
12/09/2014	47.84	0.00	2.36	15.57	10.68	76.46	48.59	0.38	0.93	-0.13	-0.13	1.04	52.07
19/09/2014	69.61	0.00	24.18	34.88	10.86	139.53	78.39	0.41	-0.43	1.16	-0.12	1.39	541.45
26/09/2014	42.81	81.46	69.64	6.61	9.41	209.93	94.81	0.61	4.21	0.90	-0.13	0.70	1428.15
03/10/2014	125.29	114.54	40.06	0.21	21.80	301.90	173.15	0.47	-0.44	1.28	-0.12	9.60	1445.69
10/10/2014	84.65	102.64	48.82	3.13	13.31	252.55	134.17	0.52	-0.44	2.11	-0.12	11.09	607.40

Mid-point Date	C2O4=	Na+	NH4+	K+	Mg++	Ca++	MSA	NSS-SO4=	EC	Filter volume	SMPS Vol.est.	Vol>0.5um	Total Vol.
(d/m/y)	(ng/m3)	(ng/m3)	(ng/m3)	(ng/m3)	(ng/m3)	(ng/m3)	(ng/m3)	(ng/m3)	(ng/m3)	(um3/cm3)	(um3/cm3)	(um3/cm3)	(um3/cm3)
12/04/2012	7.42	32.98	321.79	9.26	5.76	1.66	1.90	936.94	43.10	0.74	0.66	0.07	0.73
19/04/2012	4.72	27.23	85.90	6.00	4.74	5.29	2.06	636.21	56.20	0.45	0.51	0.04	0.55
26/04/2012	10.15	53.58	291.39	10.43	9.13	4.78	5.83	882.93	30.30	0.69	0.53	0.08	0.61
04/05/2012	8.67	21.51	113.76	8.39	4.91	10.23	10.02	639.97	57.60	0.46	0.58		
11/05/2012	11.81	50.88	112.91	11.21	10.52	7.99	16.36	720.94	56.20	0.52	0.52		
18/05/2012	4.70	16.01	84.61	6.76	2.95	-0.44	10.94	530.03	33.90	0.37	0.30		
25/05/2012	3.53	7.60	85.07	4.54	1.50	-0.45	4.73	258.79	41.10	0.22	0.18		
01/06/2012	1.64	5.13	40.40	1.51	0.76	-0.45	8.28	96.78	38.40	0.10	0.14		
08/06/2012	1.34	0.68	17.93	0.69	-0.45	-0.45	1.63	61.71	27.80	0.06	0.08		
15/06/2012	1.54	3.17	26.78	1.17	-0.45	1.46	7.19	84.18	25.80	0.08	0.17		
22/06/2012	4.88	4.30	37.41	1.63	-0.45	-0.45	6.73	120.39	12.00	0.10	0.10		
29/06/2012	5.07	4.37	37.73	2.02	-0.45	-0.45	11.24	120.73		0.09	0.14		
06/07/2012	1.70	-0.45	9.36	-0.45	-0.45	-0.45	2.07	29.50	0.00	0.02	0.05		
13/07/2012	2.54	2.76	19.72	1.59	-0.46	1.03	9.21	62.80	22.50	0.06	0.13		
20/07/2012	5.91	4.02	42.36	3.13	-0.46	1.34	9.46	146.19	65.20	0.14	0.40		
27/07/2012	0.99	-0.47	8.63	-0.47	-0.47	-0.47	3.49	23.28	7.10	0.02	0.07		
	2.29	2.40	12.56	0.72	-0.47	1.47	5.46	36.20	18.00	0.04	0.20		
10/08/2012	1.46	7.90	13.86	-0.47	1.03	1.58	7.71	47.28	4.70	0.04	0.08		
17/08/2012	0.81	6.52	3.60	-0.46	-0.46	-0.46	1.67	12.25	2.90	0.01	0.11		
24/08/2012	1.86	2.09	13.65	-0.48	-0.48	1.94	2.30	39.00	27.50	0.05	0.18		
03/09/2012	1.35	2.05	8.40	-0.47	-0.47	0.14	2.84	25.71	11.55	0.03			
14/09/2012	0.88	1.03	2.73	-0.48	-0.48	0.88	1.07	13.38	20.80	0.02	0.04		
21/09/2012	1.11	-0.47	7.03	-0.47	-0.47	-0.47	2.53	28.44	16.20	0.03	0.10		
28/09/2012	2.03	4.10	11.58	0.83	1.16	13.38	3.76	56.04	28.30	0.05	0.14		
05/10/2012	1.29	4.28	4.03	-0.48	0.79	5.12	2.59	37.50	4.10	0.03	0.05		
12/10/2012	1.04	5.27	3.17	-0.48	0.99	4.38	1.21	26.52	6.50	0.02	0.07		
19/10/2012	1.13	5.40	5.49	-0.49	0.85	3.31	1.64	32.65	5.40	0.03	0.08		
26/10/2012	1.30	25.75	6.09	1.67	5.54	14.05	1.24	95.89	18.20	0.08	0.10		
02/11/2012	1.01	9.03	4.66	0.75	1.46	2.48	0.43	76.29	5.90	0.05	0.14		
09/11/2012	3.13	45.02	28.41	3.88	7.82	11.41	1.98	335.47	16.60	0.23	0.33		

16/11/2012	2.04	26.96	22.90	3.32	3.95	3.04	0.74	195.17	16.50	0.14	0.26		
23/11/2012	1.79	26.04	35.63	4.80	3.99	4.50	0.63	378.18	57.40	0.27	0.36		
30/11/2012	1.81	37.37	29.60	2.45	6.20	11.38	0.39	80.94	1.80	0.08	0.09		
07/12/2012	1.09	51.37	11.78	2.92	9.43	5.79	0.30	95.40	5.20	0.09	0.16		
14/12/2012	1.93	48.73	41.15	5.08	7.78	6.53	0.69	202.30	16.10	0.17	0.21		
21/12/2012	3.22	91.17	85.29	12.80	13.66	8.52	1.54	635.54	22.10	0.46	0.48		
28/12/2012	2.82	210.83	39.32	14.00	41.55	16.87	0.85	574.09	0.00	0.42	0.42		
04/01/2013	3.92	188.49	46.27	11.51	29.64	13.34	0.73	707.75	20.00	0.50	0.48	0.21	0.69
11/01/2013	2.71	146.16	26.82	7.83	24.73	12.12	0.47	431.70	9.30	0.31	0.45	0.21	0.66
18/01/2013	3.58	153.88	61.60	12.31	31.93	12.03	0.80	686.97	41.90	0.49	0.56	0.17	0.73
25/01/2013	11.35	84.90	173.18	18.15	18.71	12.33	2.46	####	217.00	0.85	0.72	0.19	0.91
01/02/2013	5.60	71.72	80.40	8.64	12.08	6.37	1.18	698.30	63.60	0.49	0.49	0.10	0.59
08/02/2013	6.43	82.93	88.78	14.06	29.05	12.06	1.75	681.08	105.00	0.50	0.58	0.18	0.76
15/02/2013	1.34	25.71	30.32	3.07	4.94	2.75	0.46	272.34		0.18	0.19	0.04	0.23
22/02/2013	4.29	18.92	65.57	6.88	3.79	7.11	0.99	640.66	62.50	0.43	0.41	0.05	0.46
02/03/2013	8.39	71.55	67.67	11.87	23.75	9.50	1.25	621.96	61.10	0.43	0.51	0.13	0.64
08/03/2013	2.22	24.36	64.28	6.33	4.03	4.77	1.17	644.73	55.10	0.44	0.36	0.05	0.41
12/03/2013	6.90	189.40	43.74	10.00	35.59	13.13	1.56	353.45	0.00	0.29	0.30	0.18	0.49
22/03/2013	5.77	55.25	80.75	7.24	12.98	8.10	2.87	587.87	28.50	0.41	0.32	0.09	0.41
29/03/2013	6.23	37.58	95.31	7.80	7.90	4.09	3.15	758.07	39.90	0.51	0.42	0.07	0.49
05/04/2013	6.03	50.98	117.95	9.94	8.04	6.09	3.07	1272.87	42.20	0.82	0.64	0.08	0.72
12/04/2013	8.79	162.31	120.00	13.47	29.85	15.25	4.07	882.96	13.50	0.63	0.59	0.17	0.76
19/04/2013	10.07	243.93	118.12	17.09	42.05	19.65	13.97	1516.91	33.60	1.02	0.72	0.25	0.97
26/04/2013	12.17	167.97	113.88	12.99	31.11	17.58	14.51	1078.95	44.00	0.77	0.67	0.16	0.83
03/05/2013	5.32	89.56	91.62	8.20	15.50	9.02	10.01	1078.65	12.50	0.69	0.76	0.13	0.88
10/05/2013	4.20	78.71	94.44	6.59	13.95	7.61	8.87	719.24	10.40	0.50	0.38	0.09	0.47
17/05/2013	3.96	34.16	65.22	3.71	6.12	7.75	16.03	459.50	16.60	0.32	0.27	0.04	0.31
24/05/2013	2.82	40.70	65.93	3.21	7.31	5.99	18.78	259.67	20.40	0.21	0.22	0.05	0.27
31/05/2013	2.78	22.85	66.43	2.13	4.40	13.82	12.00	292.19	0.00	0.21	0.20	0.03	0.23
07/06/2013	2.30	23.53	43.38	1.91	5.10	15.15	8.18	174.62	7.40	0.14	0.14	0.06	0.20
14/06/2013	-0.49	4.49	27.38	0.84	0.99	3.42	5.51	82.35	0.60	0.06	0.06	0.01	0.07
21/06/2013	-0.48	1.97	22.09	0.89	-0.48	2.85	11.37	78.87	2.80	0.06	0.08	0.01	0.08
28/06/2013	-0.42	2.47	10.73	-0.42	-0.42	2.23	3.42	34.19	0.00	0.03	0.06	0.01	0.06
05/07/2013	-0.56	-0.56	2.57	-0.56	-0.56	1.16	0.91	7.98	9.30	0.01	0.03	0.00	0.03
12/07/2013	-0.48	-0.48	5.67	-0.48	-0.48	0.88	2.23	20.00	13.60	0.02	0.04	0.00	0.04
19/07/2013	1.42	-0.48	17.98	0.79	-0.48	1.75	4.53	50.94	17.80	0.05	0.10	0.01	0.11
26/07/2013	2.45	13.40	17.57	1.26	1.62	3.46	8.58	54.88	4.00	0.05	0.12	0.03	0.15
02/08/2013	1.15	2.67	2.92	-0.47	-0.47	0.77	1.55	8.44	4.00	0.01	0.04	0.01	0.05
09/08/2013	-0.50	2.39	4.13	-0.50	-0.50	1.83	1.91	14.90	3.60	0.01	0.04	0.00	0.04
16/08/2013	1.42	4.74	3.00	-0.50	0.76	2.73	4.29	18.86		0.01	0.04	0.01	0.05
24/08/2013	1.73	9.05	9.45	-0.48	1.55	3.28	8.62	35.73	9.40	0.03	0.07	0.02	0.09
30/08/2013	1.09	1.89	5.25	-0.41	-0.41	2.08	4.81	20.03	0.50	0.02	0.05	0.01	0.05
06/09/2013	1.76	4.68	5.14	-0.55	1.03	5.91	5.16	71.71	0.00	0.04	0.06	0.02	0.09

13/09/2013	1.26	1.67	4.78	-0.47	-0.47	2.63	2.62	117.41	12.60	0.08	0.11	0.01	0.11
20/09/2013	1.21	1.02	2.48	-0.48	-0.48	2.69	1.45	52.31	1.20	0.03	0.04	0.00	0.04
27/09/2013	1.48	-0.49	6.06	-0.49	-0.49	2.16	1.64	88.24	28.50	0.07	0.09	0.01	0.10
04/10/2013	1.28	7.88	4.10	-0.47	1.23	2.18	2.18	37.11	0.00	0.03	0.05	0.01	0.06
10/10/2013	1.44	37.76	3.72	1.37	6.37	3.95	1.74	51.04	11.10	0.05	0.08	0.04	0.12
17/10/2013	1.19	4.19	7.33	-0.41	1.11	2.26	1.22	65.26	11.20	0.05	0.07	0.01	0.08
25/10/2013	1.76	24.24	8.33	1.48	3.62	4.34	0.98	185.04	14.70	0.12	0.18	0.02	0.20
01/11/2013	1.92	70.82	17.80	3.38	9.72	8.51	1.59	388.50	27.00	0.27	0.32	0.08	0.40
09/11/2013	4.48	338.72	35.69	15.89	55.75	25.11	2.59	438.77	0.00	0.39	0.47	0.33	0.80
16/11/2013	2.36	69.61	18.39	4.20	10.09	5.90	0.61	247.42	2.70	0.18	0.25	0.18	0.43
22/11/2013	2.53	80.51	19.00	5.03	13.51	7.44	1.00	449.50	31.30	0.31	0.30	0.08	0.38
29/11/2013	3.21	40.52	65.91	9.42	7.68	6.49	1.85	733.52	65.10	0.49	0.49	0.07	0.55
06/12/2013	3.08	75.48	48.31	8.31	13.39	6.34	1.27	534.72	30.30	0.37	0.37	0.11	0.48
13/12/2013	3.14	113.12	52.35	9.71	17.77	7.93	0.79	633.86	47.80	0.45	0.47		
19/12/2013	2.28	118.17	30.04	6.84	18.31	7.90	0.73	449.40		0.31			
26/12/2013	2.55	41.56	64.41	7.39	6.81	4.08	1.23	904.74		0.55			
03/01/2014	3.07	50.04	77.55	8.90	8.20	4.91	1.49	####	90.90	0.71			
10/01/2014	1.36	33.47	21.49	3.16	5.21	3.46	0.20	181.59	15.60	0.14			
17/01/2014	0.99	26.51	8.95	1.84	4.01	1.29	0.48	86.16	13.90	0.08			
24/01/2014	1.15	42.78	17.78	4.89	9.92	4.50	0.31	249.50	11.50	0.17			
31/01/2014	-0.46	9.45	4.38	0.82	1.55	-0.46	-0.05	37.70	9.82	0.03			
07/02/2014	1.40	89.33	18.08	8.19	24.05	6.88	0.17	178.47	7.60	0.14	0.26		
14/02/2014	2.47	51.83	34.20	8.12	10.42	6.42	0.65	335.37	21.10	0.24	0.22		
21/02/2014	4.82	78.07	65.94	14.51	21.11	33.09	0.78	561.32	70.10	0.41	0.44		
28/02/2014	5.14	63.47	87.44	16.37	16.62	17.93	0.93	946.79	56.10	0.62	0.45		
07/03/2014	5.26	103.66	59.64	14.16	23.94	19.85	0.85	709.58	41.70	0.48	0.49		
14/03/2014	7.90	30.08	142.61	22.36	8.68	24.97	1.02	1645.41	168.00	1.09	0.82		
21/03/2014	6.20	42.15	116.45	17.13	8.71	5.31	1.18	1228.18	68.10	0.80	0.59		
28/03/2014	5.84	95.66	68.76	12.15	20.78	15.53	1.13	1056.55	37.10	0.68	0.52		
04/04/2014	6.05	42.68	82.08	10.55	7.50	5.22	1.55	841.31	26.60	0.55	0.47		
11/04/2014	7.49	76.40	88.84	12.00	13.79	7.56	3.26	936.20	21.80	0.61	0.35		
18/04/2014	17.41	186.03	114.97	21.27	38.29	23.76	7.29	1351.80	16.00	0.89	0.73		
25/04/2014	10.07	94.83	124.63	16.52	15.75	7.89	9.56	1375.97	59.70	0.90	0.72		
06/05/2014	8.52	28.21	73.52	7.68	6.06	10.98	6.52	473.83	15.10	0.33			
17/05/2014	8.28	20.86	60.02	6.16	7.91	32.99	3.82	869.71	17.60	0.53	0.53		
24/05/2014									6.07				
30/05/2014	4.28	20.67	29.13	2.87	8.38	46.12	7.19	218.41	25.50	0.16	0.13		
06/06/2014	-0.46	0.83	15.33	0.70	-0.46	4.41	1.30	82.25	0.00	0.05	0.09		
13/06/2014	7.68	5.96	57.17	2.75	2.21	9.32	6.34	277.62	21.00	0.20	0.23		
20/06/2014	0.86	3.22	15.70	-0.44	1.17	7.22	8.89	80.37	4.50	0.06	0.08		
27/06/2014	-0.55	-0.55	11.07	-0.55	-0.55	6.91	10.56	110.74	0.00	0.07	0.10		

04/07/2014	1.31	4.05	1.11	-0.45	4.02	53.78	3.38	51.46	4.52	0.03	0.07
11/07/2014	2.02	2.27	24.66	1.05	0.81	6.18	3.03	74.48		0.06	0.13
18/07/2014	0.87	1.40	8.04	-0.45	-0.45	4.80	2.76	33.58	6.73	0.03	0.11
25/07/2014	1.03	4.64	5.36	0.74	-0.45	1.59	4.58	19.54	0.00	0.02	0.08
01/08/2014	4.41	3.38	15.92	2.08	0.62	1.62	5.70	42.45	30.00	0.05	0.27
08/08/2014	2.30	2.90	8.60	0.89	-0.52	0.85	6.66	26.82	20.40	0.03	0.13
15/08/2014	0.72	2.49	5.58	-0.44	-0.44	-0.44	4.53	21.24	5.00	0.02	0.08
22/08/2014	0.92	3.99	6.62	-0.44	-0.44	-0.44	5.50	23.79	0.00	0.02	0.12
29/08/2014	1.06	2.39	8.51	-0.44	-0.44	-0.44	6.24	27.97	5.63	0.03	0.08
05/09/2014	1.08	0.71	8.53	-0.43	-0.43	0.69	4.88	30.60	15.20	0.03	0.09
12/09/2014	0.82	1.95	5.56	-0.45	-0.45	1.41	2.48	52.01	14.40	0.04	0.05
19/09/2014	1.07	2.90	6.61	0.75	-0.43	1.88	4.66	541.36	11.00	0.31	0.34
26/09/2014	1.38	3.46	6.97	-0.45	0.70	1.59	6.29	####	13.70	0.81	0.66
03/10/2014	1.07	8.43	7.63	0.79	1.27	3.18	4.96	1445.42	0.00	0.82	0.55
10/10/2014	-0.44	1.64	8.02	-0.44	-0.44	-0.44	1.27	607.35	3.98	0.35	0.49