



Supplement of

Aerosol optical characteristics and their vertical distributions under enhanced haze pollution events: effect of the regional transport of different aerosol types over eastern China

Tianze Sun et al.

Correspondence to: Huizheng Che (chehz@camscma.cn) and Xiangao Xia (xxa@mail.iap.ac.cn)

The copyright of individual parts of the supplement might differ from the CC BY 4.0 License.

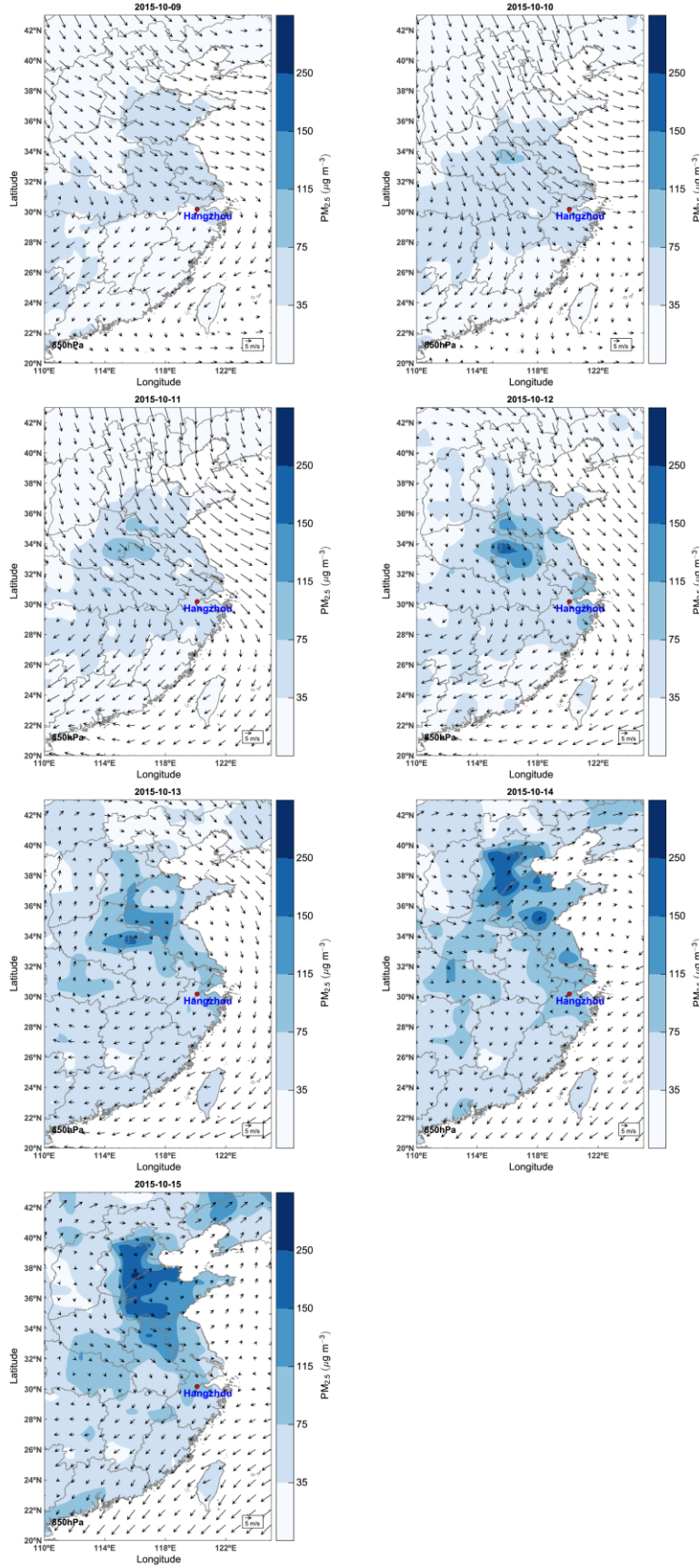


Figure S1. Daily averaged spatial distribution of PM_{2.5} mass concentration and the wind field at 850hPa from ECMWF over eastern China during 09-15 October, 2015.

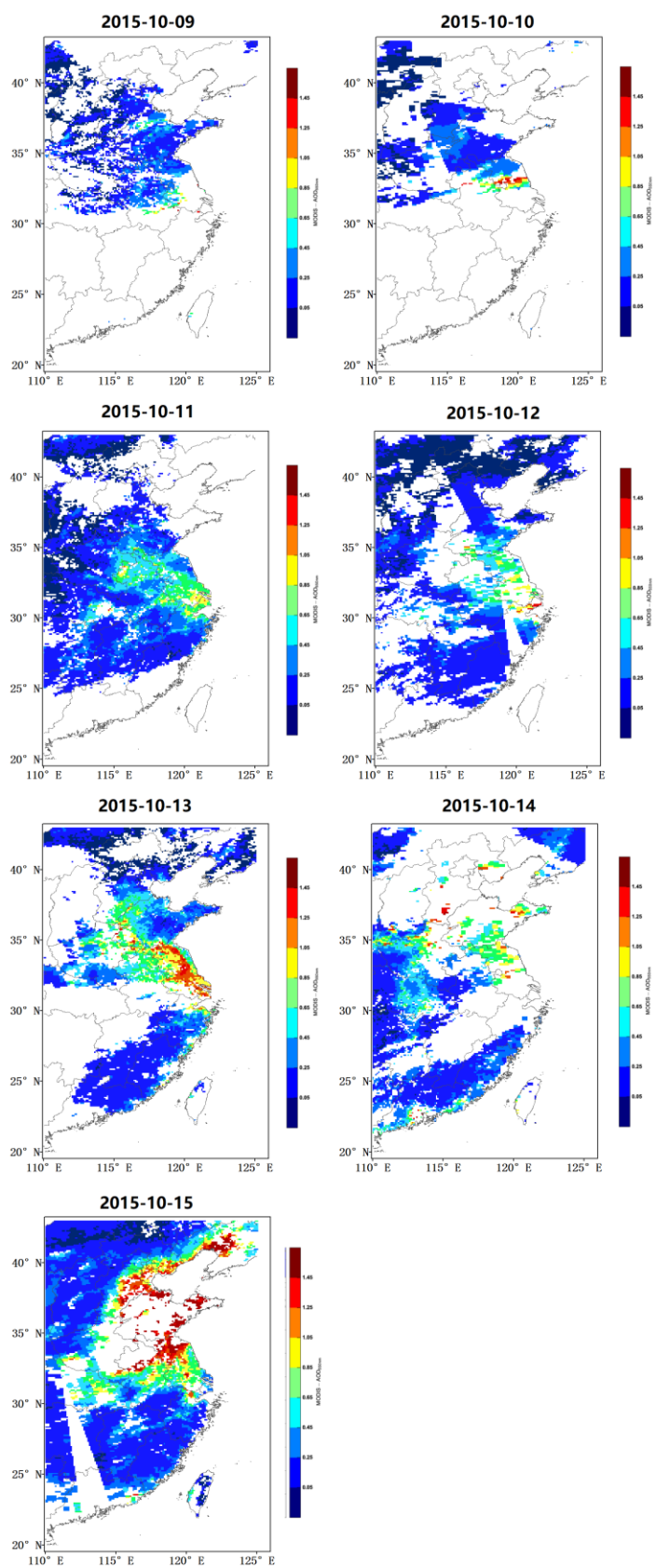


Figure S2. Daily averaged spatial distribution of AOD from MODIS, over eastern China during 09-15 October, 2015.

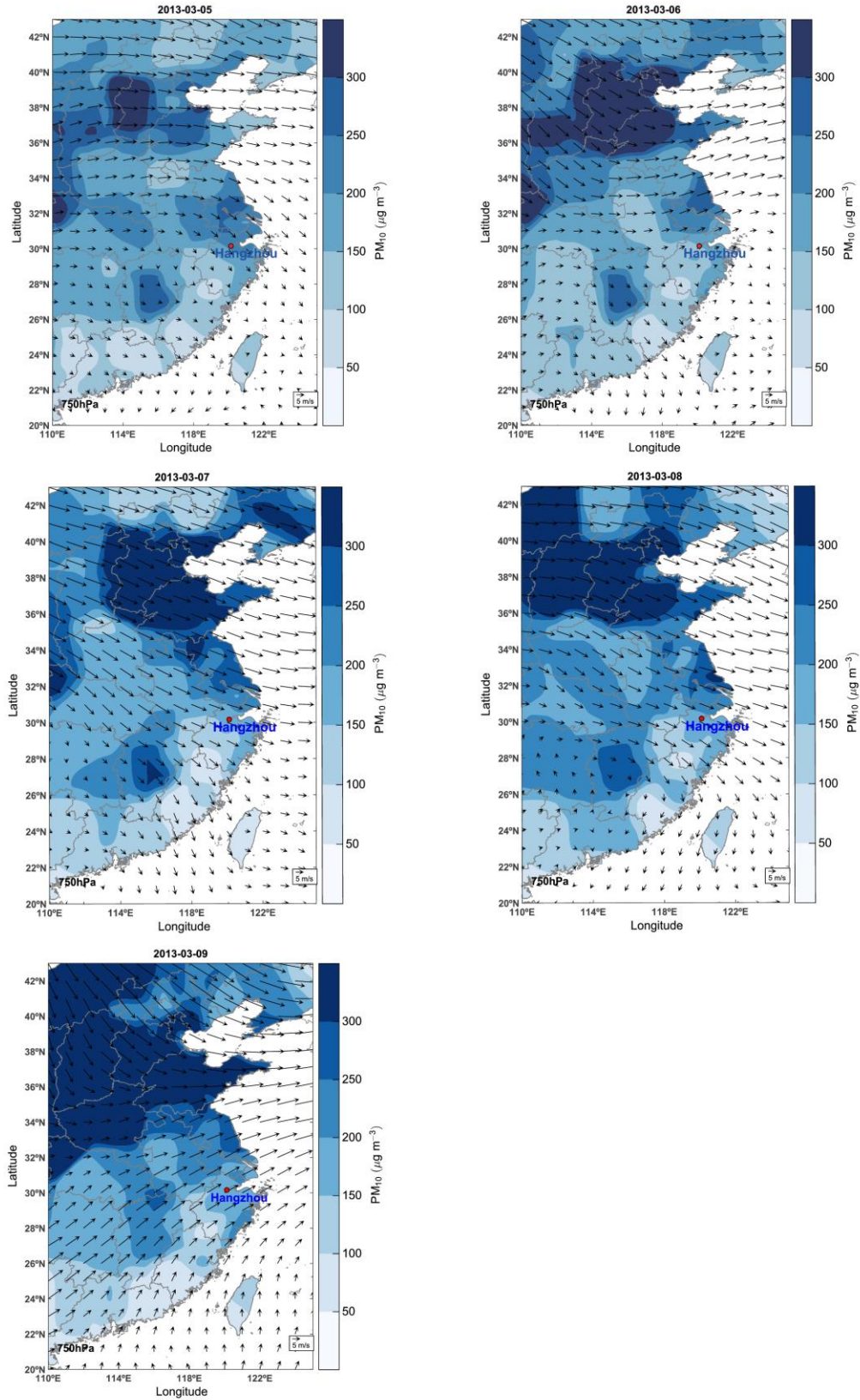


Figure S3. Daily averaged spatial distribution of PM₁₀ mass concentration and the wind field at 750hPa from ECMWF over eastern China, during 05-09 March, 2013.

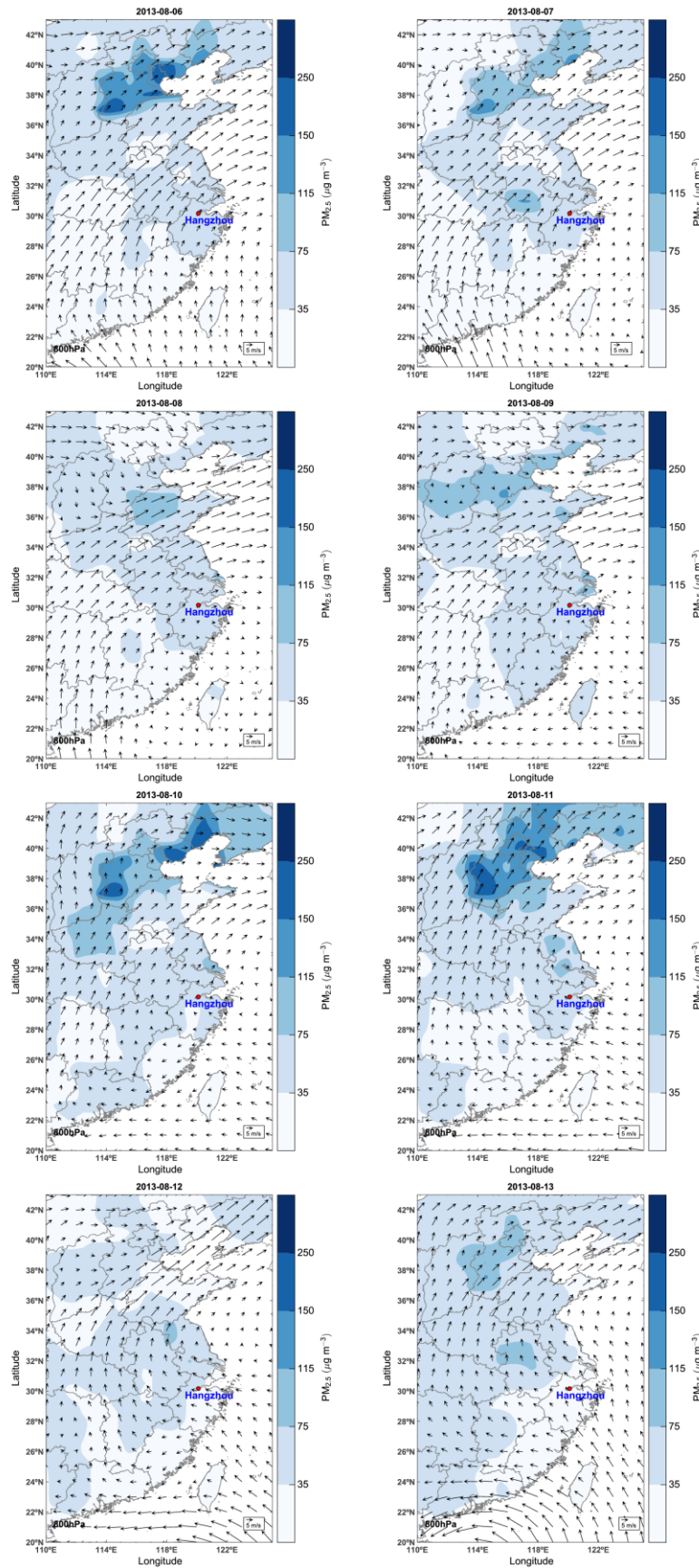


Figure S4. Daily averaged spatial distribution of PM_{2.5} mass concentration and the wind field at 800hPa from ECMWF over eastern China, during 06-13 August, 2013.

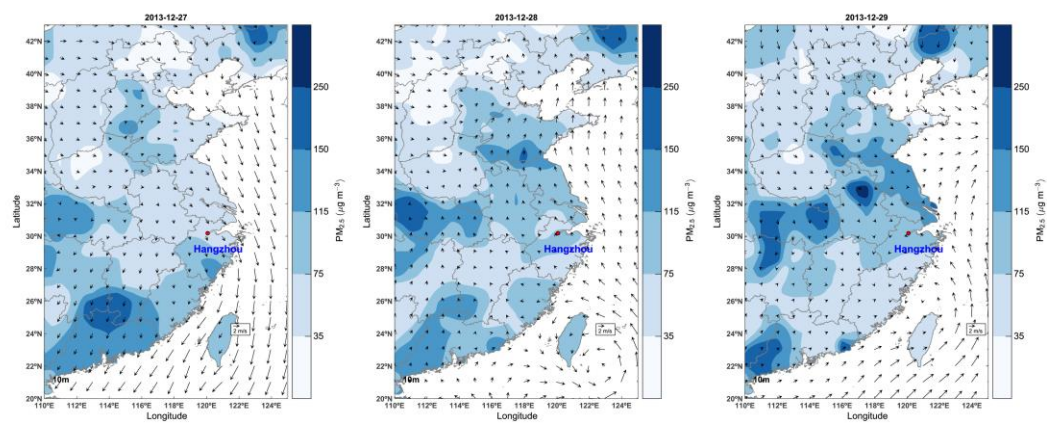


Figure S5. Spatial distribution of PM_{2.5} and the wind field at 10m from ECMWF over eastern China, during 27-29 December, 2013.