

Supplement of Atmos. Chem. Phys., 18, 203–225, 2018  
<https://doi.org/10.5194/acp-18-203-2018-supplement>  
© Author(s) 2018. This work is distributed under  
the Creative Commons Attribution 3.0 License.



*Supplement of*

**Quantifying the relationship between PM<sub>2.5</sub> concentration, visibility and planetary boundary layer height for long-lasting haze and fog–haze mixed events in Beijing**

**Tian Luan et al.**

*Correspondence to:* Xueliang Guo (guoxl@mail.iap.ac.cn)

The copyright of individual parts of the supplement might differ from the CC BY 3.0 License.

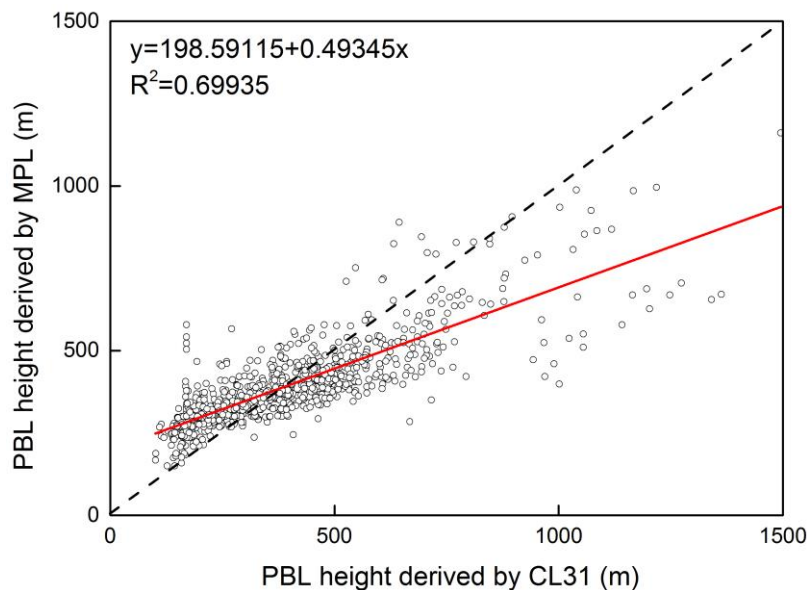


Figure S1: Comparison of PBL heights derived by MPL and by CL31

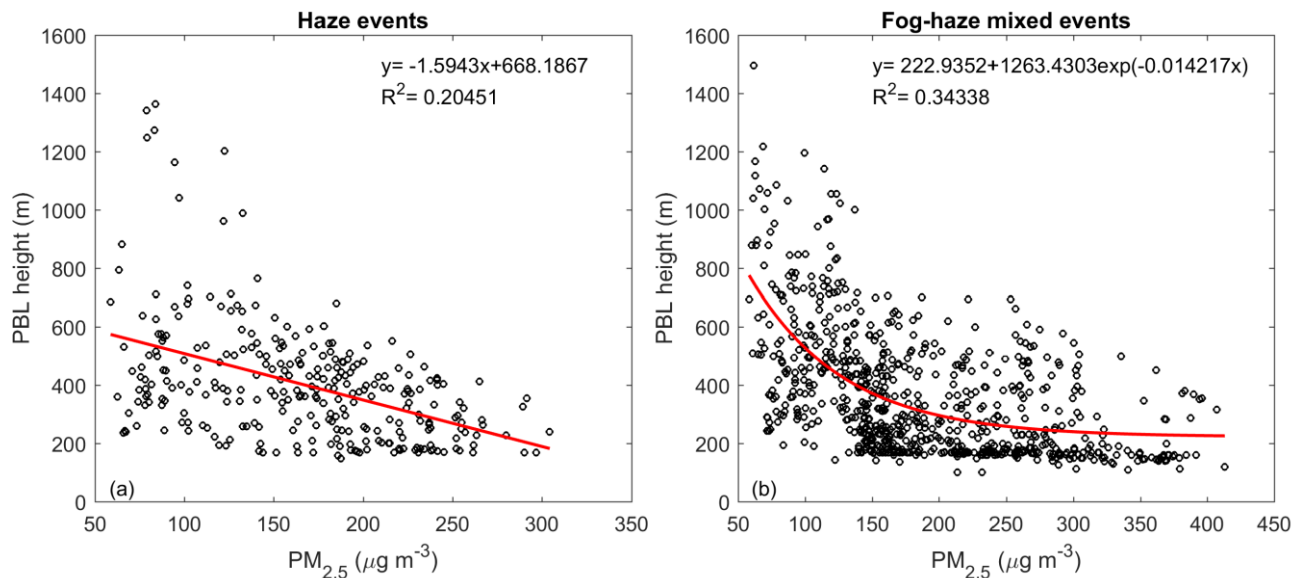


Figure S2: Relationship between PBL height derived by CL31 and  $PM_{2.5}$  mass concentration for (a) haze and (b) fog-haze mixed events from January 2014 to March 2015 in Beijing city

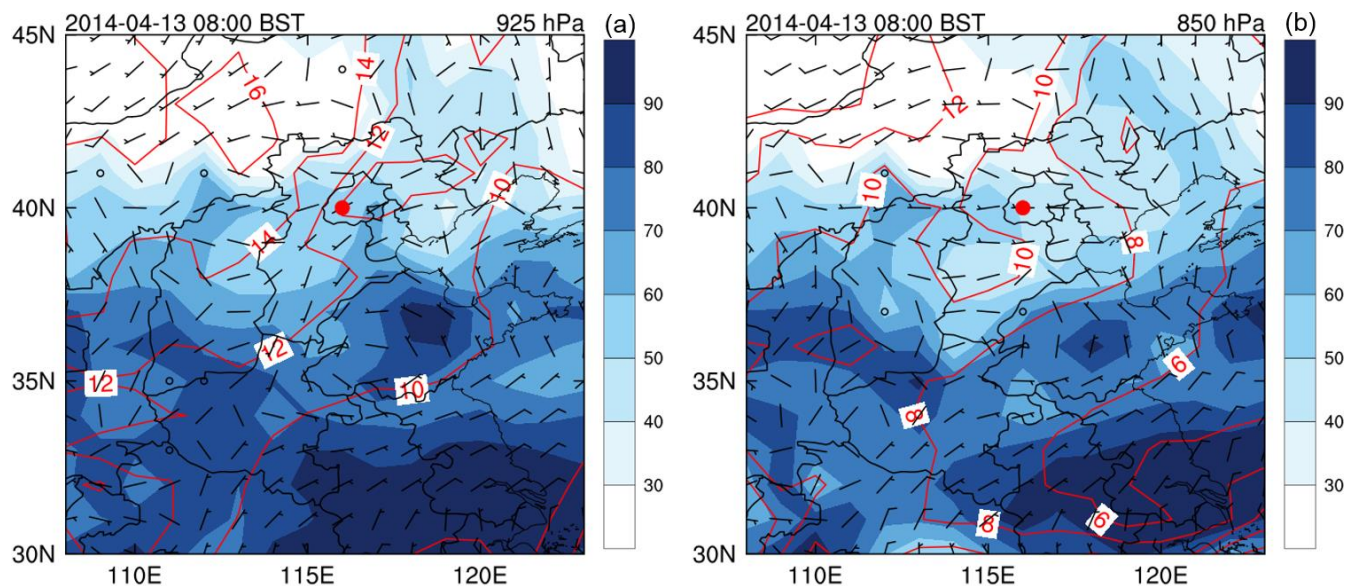


Figure S3: Temperature (red contour lines, units: °C), RH (color shading, units: %) and wind (wind bar) distribution in (a) 925 hPa and (b) 850 hPa at 08:00 BST on 13 April 2014. The red dot represents the site of CMA.

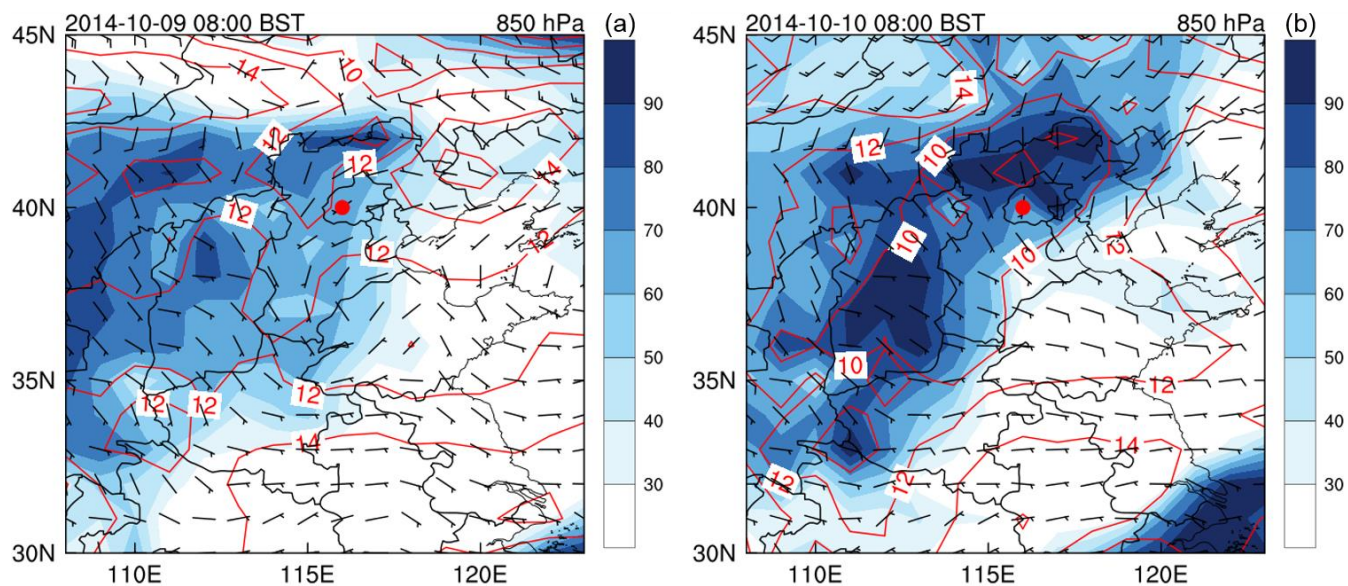


Figure S4: Temperature (red contour lines, units: °C), RH (color shading, units: %) and wind (wind bar) distribution in 850 hPa at 08:00 BST on (a) 9 October and (b) 10 October 2014. The red dot represents the site of CMA.