

Supplement of Atmos. Chem. Phys., 18, 17945–17961, 2018  
<https://doi.org/10.5194/acp-18-17945-2018-supplement>  
© Author(s) 2018. This work is distributed under  
the Creative Commons Attribution 4.0 License.



*Supplement of*

**Characterization of ozone deposition to a mixed oak–hornbeam forest – flux measurements at five levels above and inside the canopy and their interactions with nitric oxide**

**Angelo Finco et al.**

*Correspondence to:* Giacomo Gerosa ([giacomo.gerosa@unicatt.it](mailto:giacomo.gerosa@unicatt.it))

The copyright of individual parts of the supplement might differ from the CC BY 4.0 License.

## Supplementary material

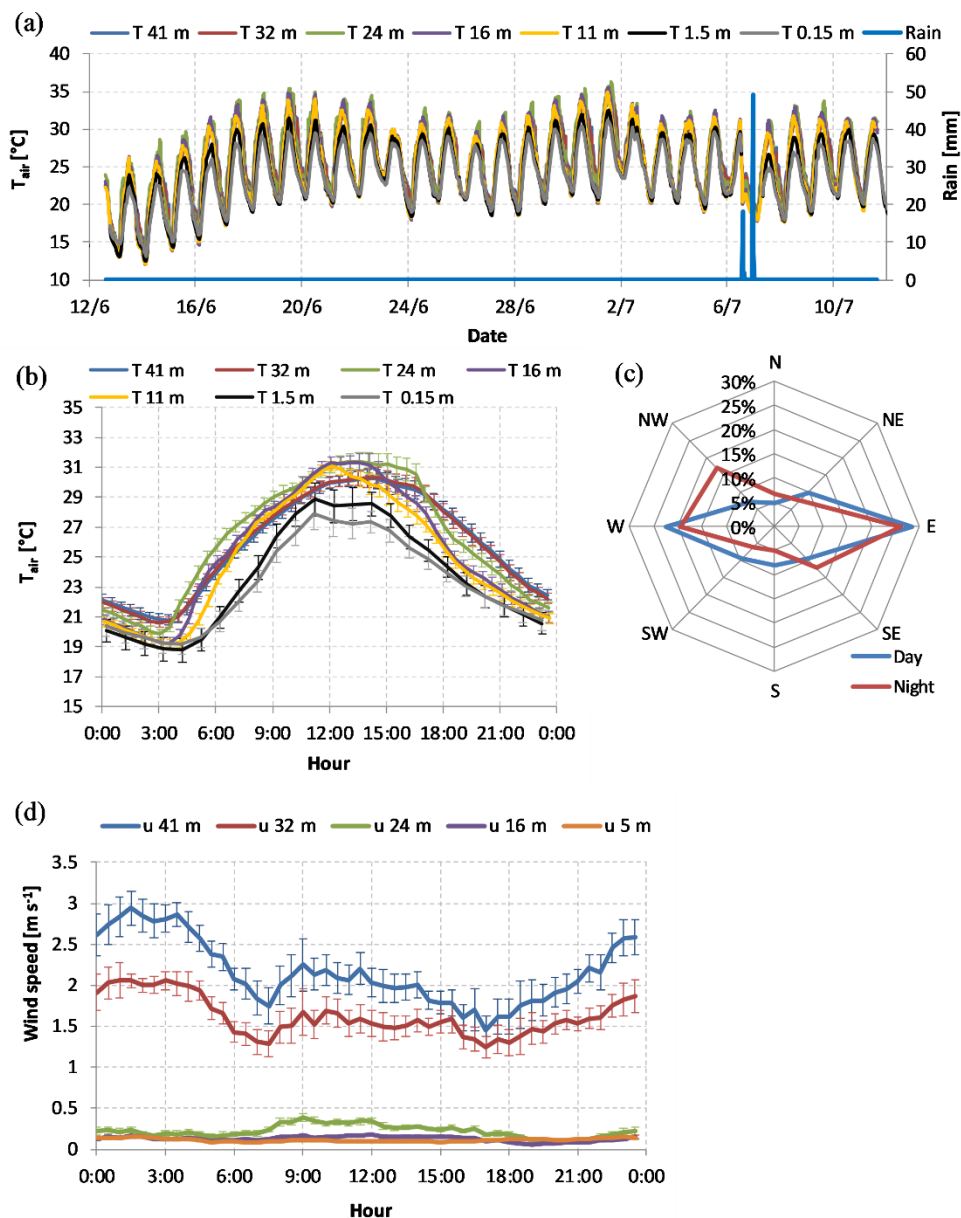
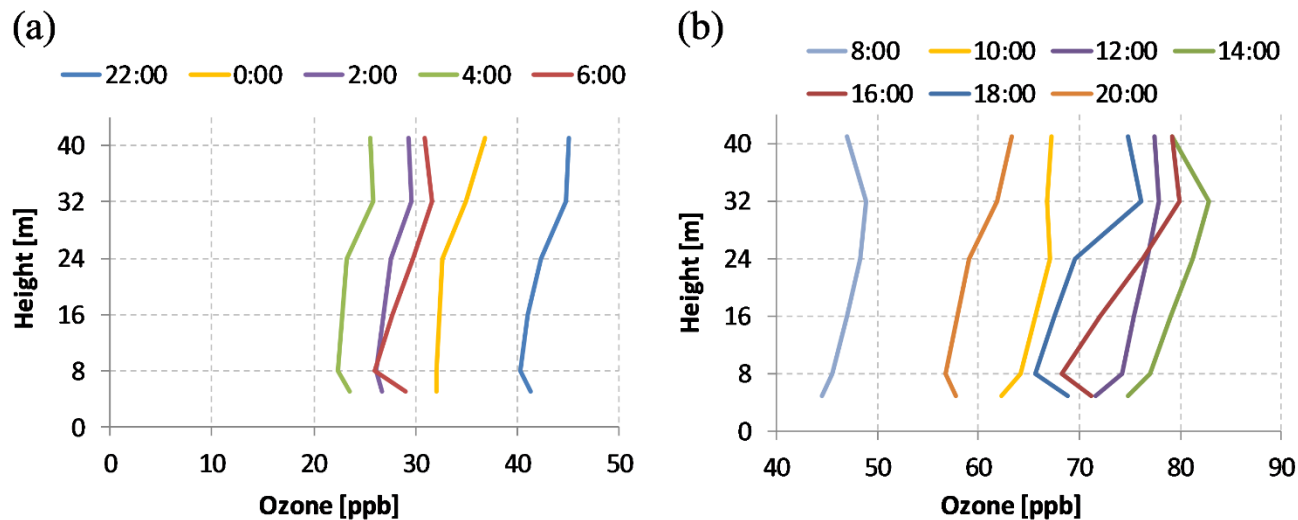


Figure S1 – (a) Rainfall amounts and temperature evolution at seven heights. Blue histograms are rainfalls. (b) Average diel course of air temperature at the seven heights. (c) Wind rose based on 41 m data, the radial axis unit indicates the percentage of the data in each direction, the blue line are diurnal data, the red line are nighttime data.

(d) Average diel course of wind intensity at the five levels. Vertical bars in (b) and (d) represent the standard error of the mean.



5 Figure S2 - Diurnal evolution of O<sub>3</sub> concentration profiles: (a) from 22:00 to 6:00; (b) from 8:00 to 20:00. The time of the day to which measurements are referred is indicated in each figure label. The 0.15 m level has not been included here for a better visualization (O<sub>3</sub> concentration at this level was around 10 ppb in (a) and below 25 ppb in (b)).

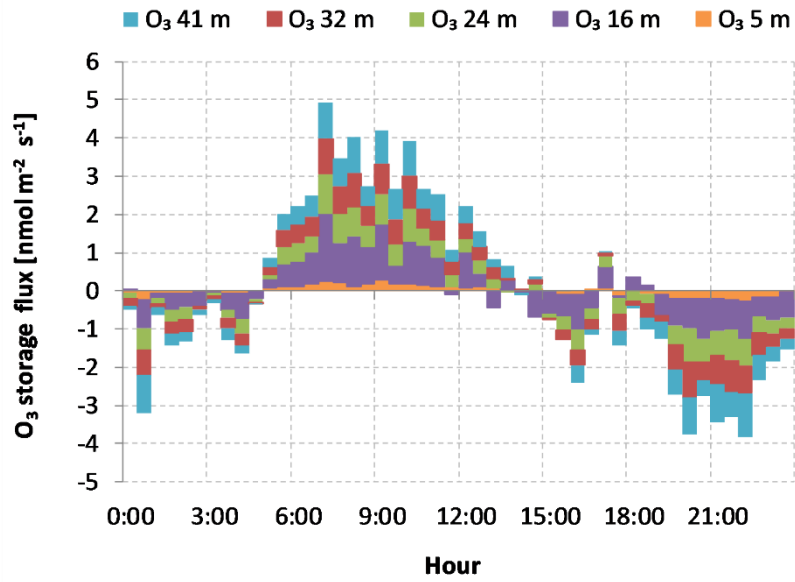


Figure S3 - Mean diel evolution of the O<sub>3</sub> storage flux (the storage term of the Eq. 3). The contribution of the air column between adjacent flux measurement levels is indicated with a different color.

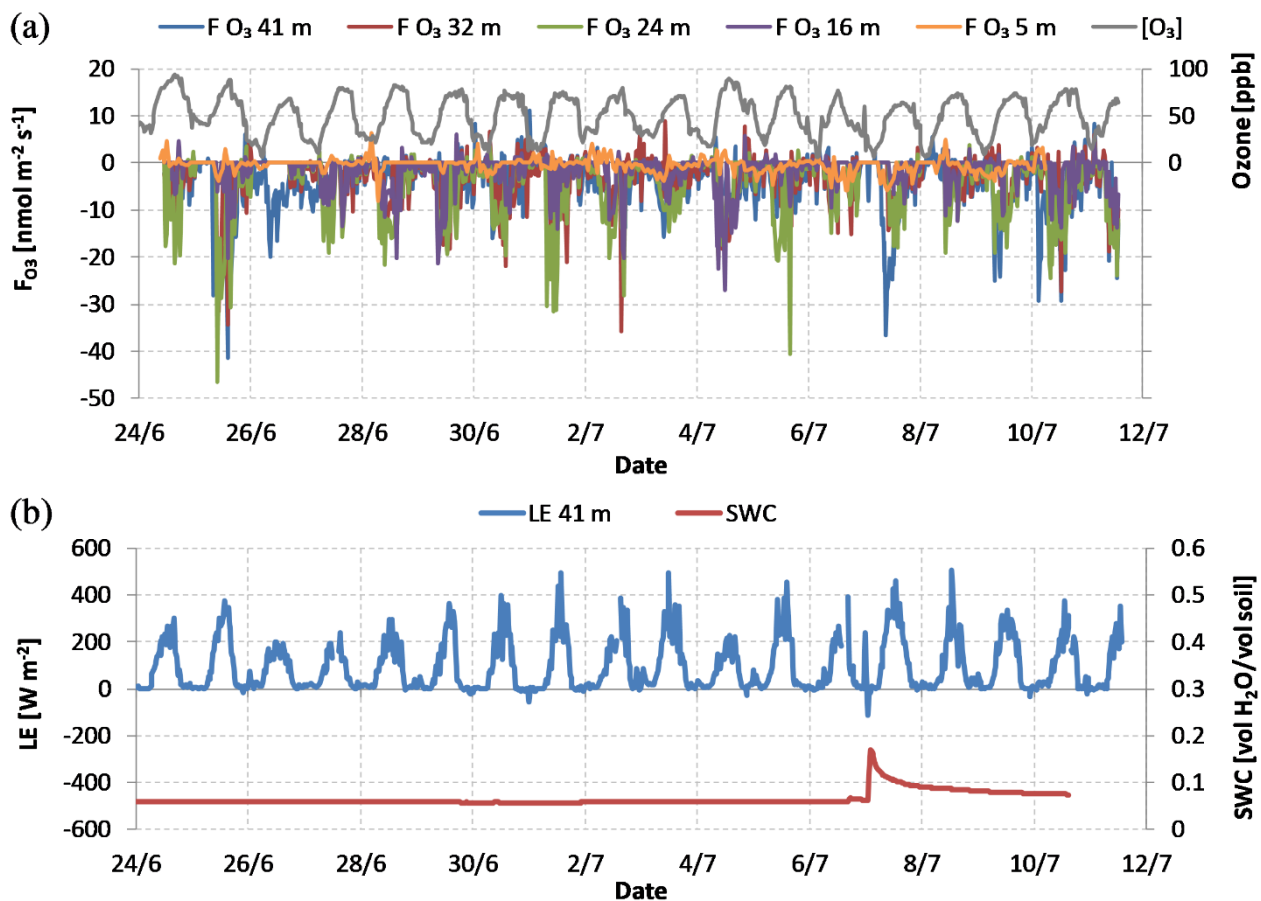
5

10

15

20

25



5 Figure S4 – (a) Ozone fluxes at the five levels (41 m, 32 m, 24 m, 16 m and 5 m) and ozone concentration at 41 m. (b) Latent heat fluxes measured at the top of the tower (LE 41) and soil water content (SWC) expressed as volumetric ratio between water and soil.

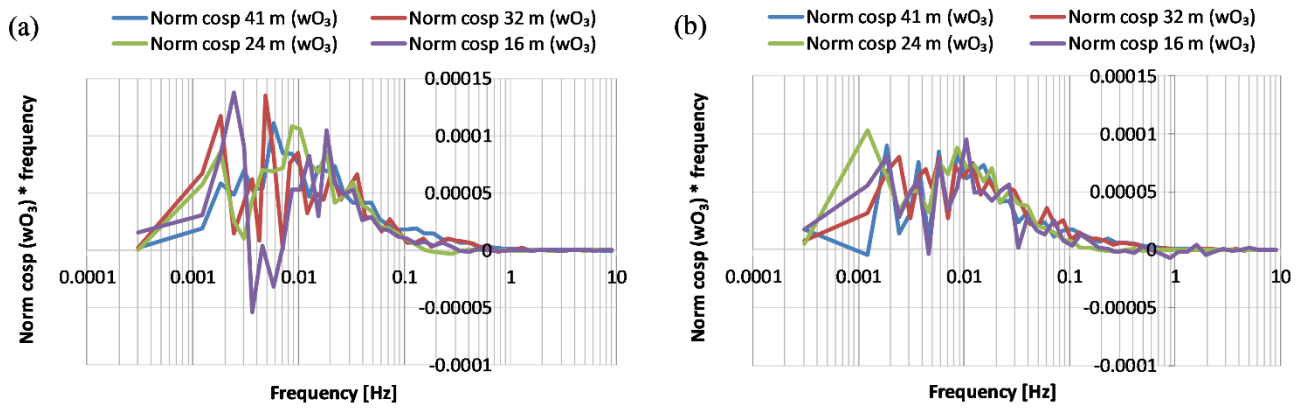


Figure S5 - Average normalized cospectra of the vertical component of the wind and O<sub>3</sub> at 11:00 (a) and at 15:00 (b).