

Supplement of Atmos. Chem. Phys., 18, 17437–17450, 2018  
<https://doi.org/10.5194/acp-18-17437-2018-supplement>  
© Author(s) 2018. This work is distributed under  
the Creative Commons Attribution 4.0 License.



*Supplement of*

## **Vertical characterization of highly oxygenated molecules (HOMs) below and above a boreal forest canopy**

**Qiaozhi Zha et al.**

*Correspondence to:* Qiaozhi Zha ([qiaozhi.zha@helsinki.fi](mailto:qiaozhi.zha@helsinki.fi)) and Chao Yan ([chao.yan@helsinki.fi](mailto:chao.yan@helsinki.fi))

The copyright of individual parts of the supplement might differ from the CC BY 4.0 License.

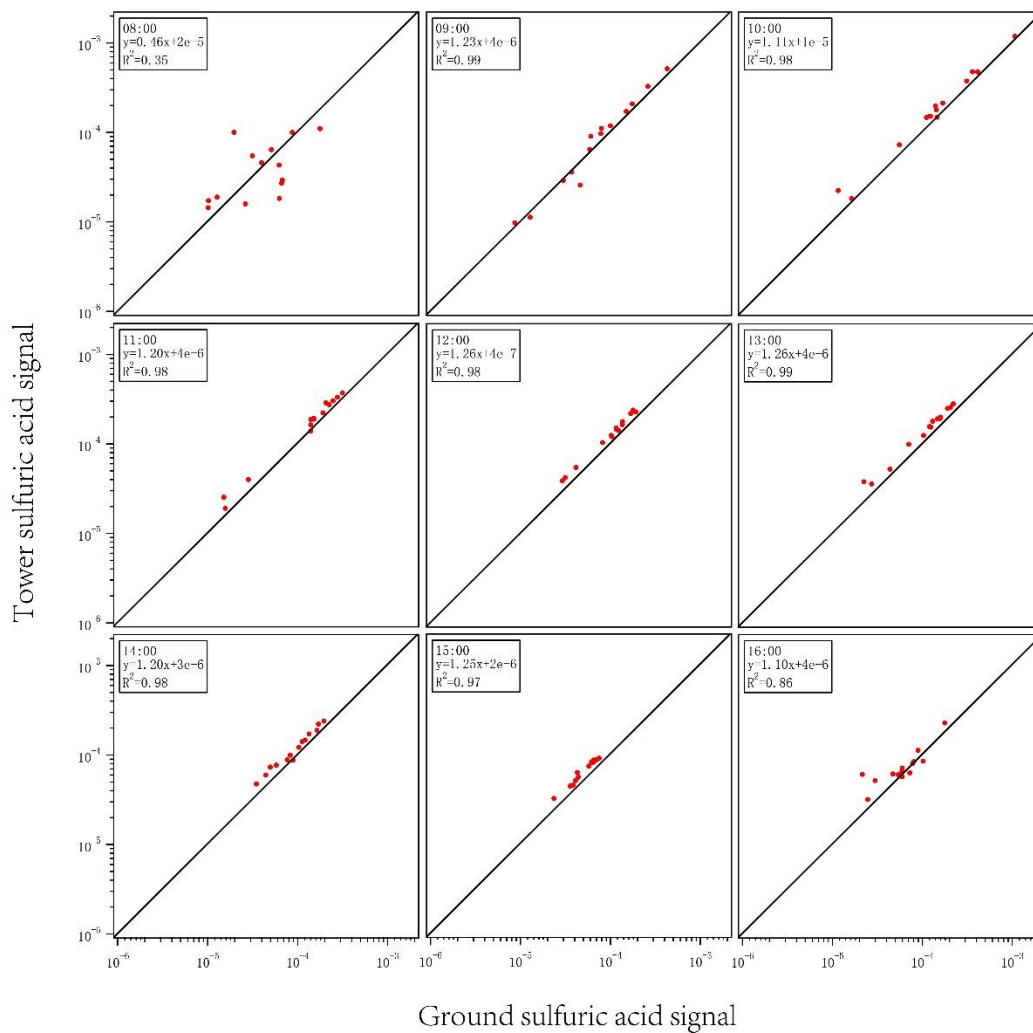


Figure S1 Correlation between ground and tower sulfuric acid signals from 08:00 – 16:00 LT (1-hour averaged, normalized to reagent ions) during campaign. The black line denotes 1:1 ratio.

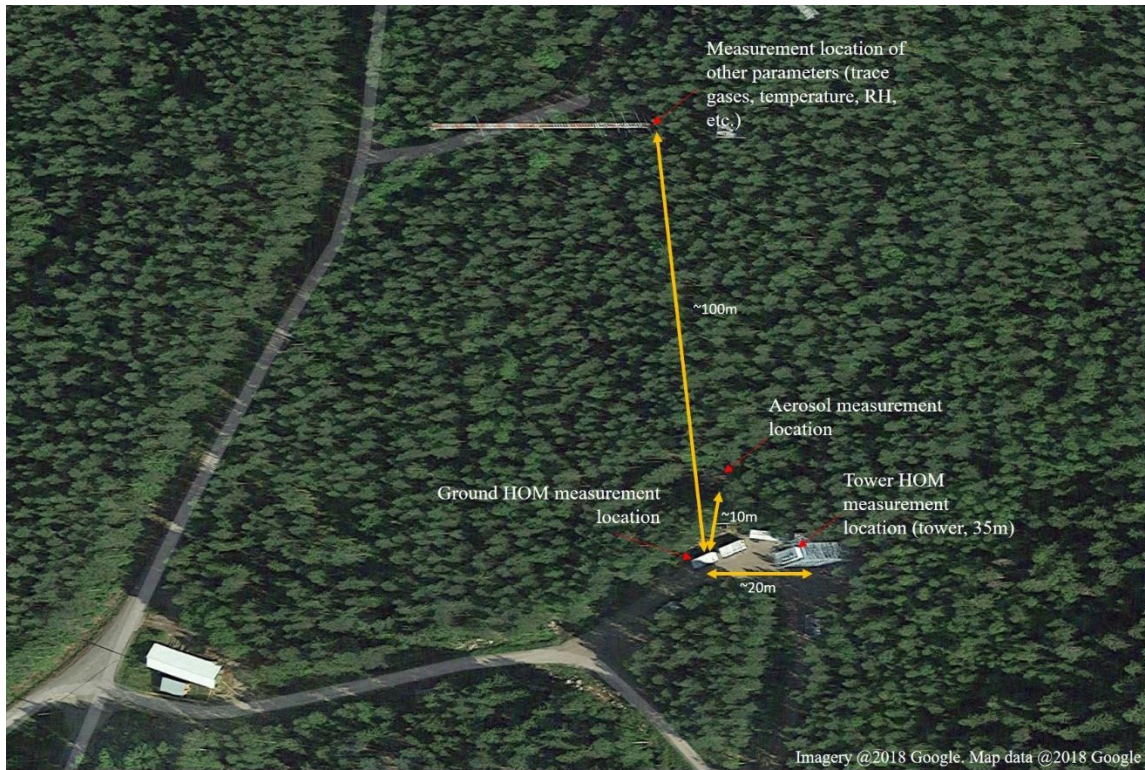


Figure S2 Map from Google Earth showing locations of all the measurements during IBairn campaign at SMEAR II station.